

The project

Modern design and natural materials that match perfectly with the natural environment.

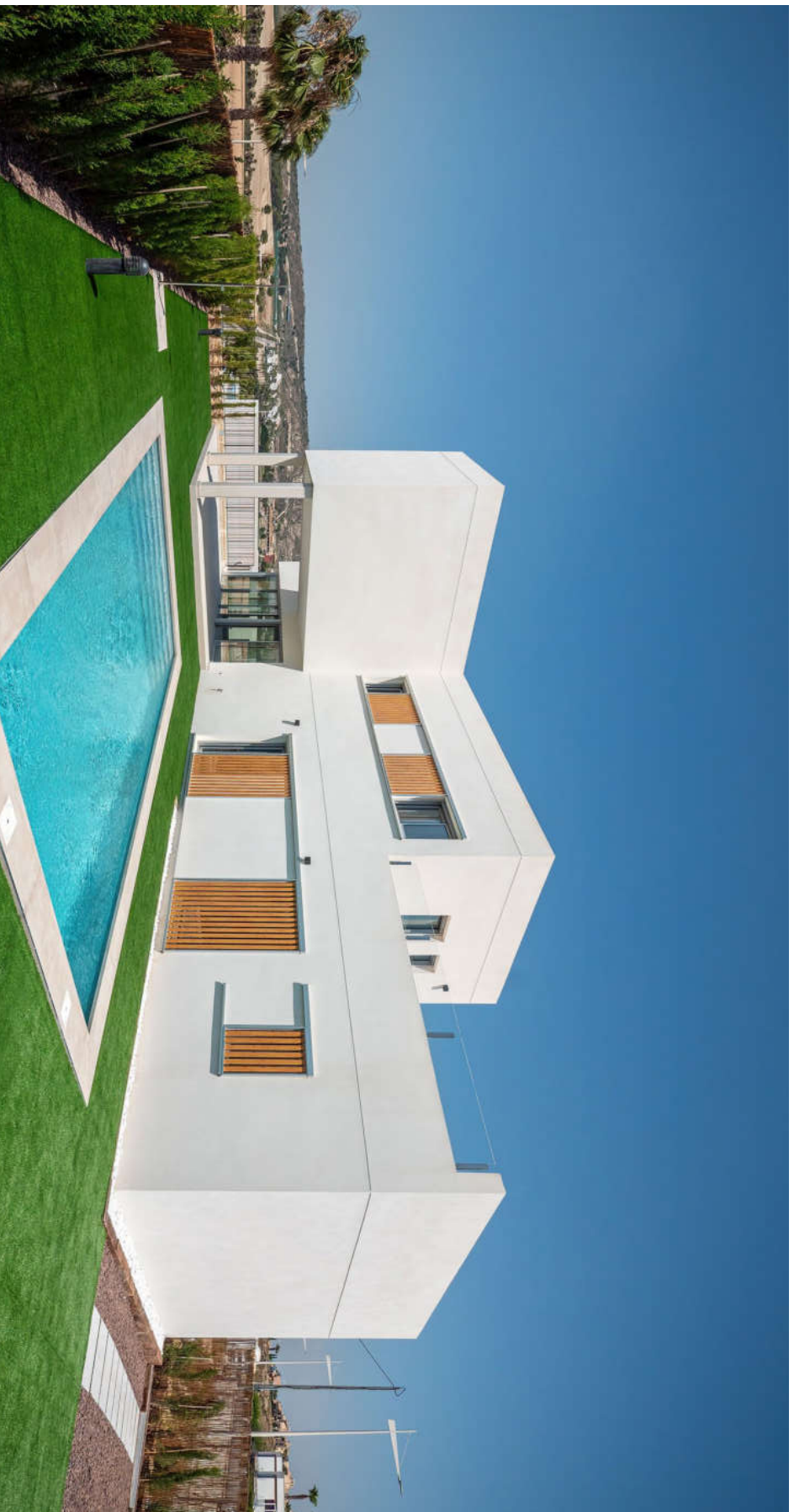
Features

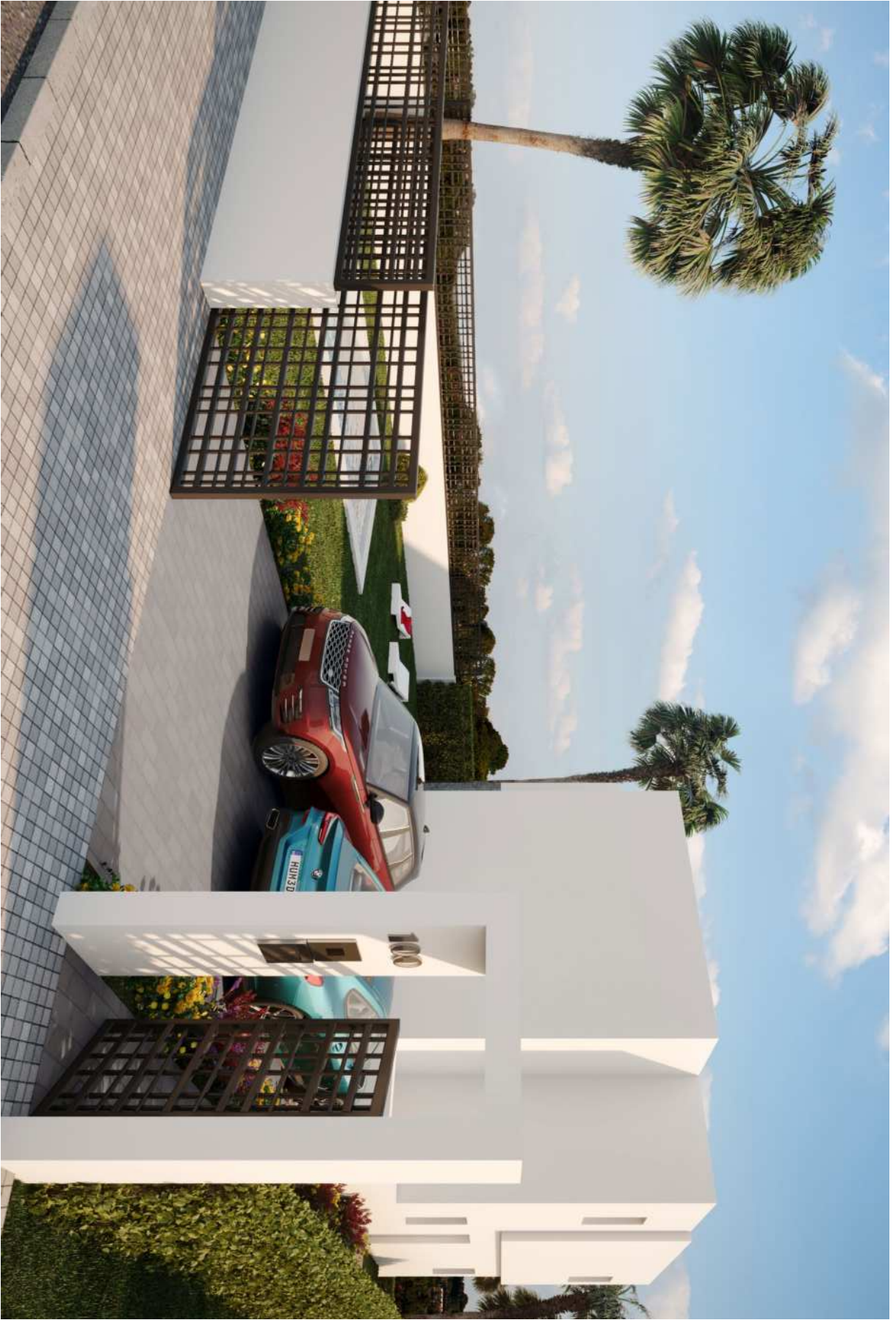
 4 Bedrooms

 Private pool

 3 Bathrooms

 Private parking





General finishes

The facade is a balanced combination of **monolayer and masonry** that protecting the house and connecting perfectly with the natural environment of the resort.

Your home is protected with a **fully installed alarm system** which cameras, includes also an **advanced home automation system** to manage the **motorized shutters** and lighting interior.

Materials that last





General interior finishes

Smooth white colour is used on the plastic painting inside. Valena Next from Legrand electric fittings and doors equipped with stainless steel handlers.

It is included an advanced domotic system to manage different devices at your home. Indoor and outdoor flooring is a cement imitation porcelain stoneware.

The sliding grey aluminium exterior carpentry includes tilt and turn system in the bathrooms and electric blinds.

Other Finishes

✱ Air-conditioning pre-installation: ducted for the main and first floor.

📶 Alarm system totally fitted with sensors and cameras.

Light is the main character.





Natural textures for functional spaces.

Kitchen finishes

Dinant stands out on the kitchen details, with a wide and elegant great scale imitation terrazzo worktop, and great durability with no maintenance.

Here we can find a well-balanced, practical and real luxury space, with white melamine furniture and wood effect.

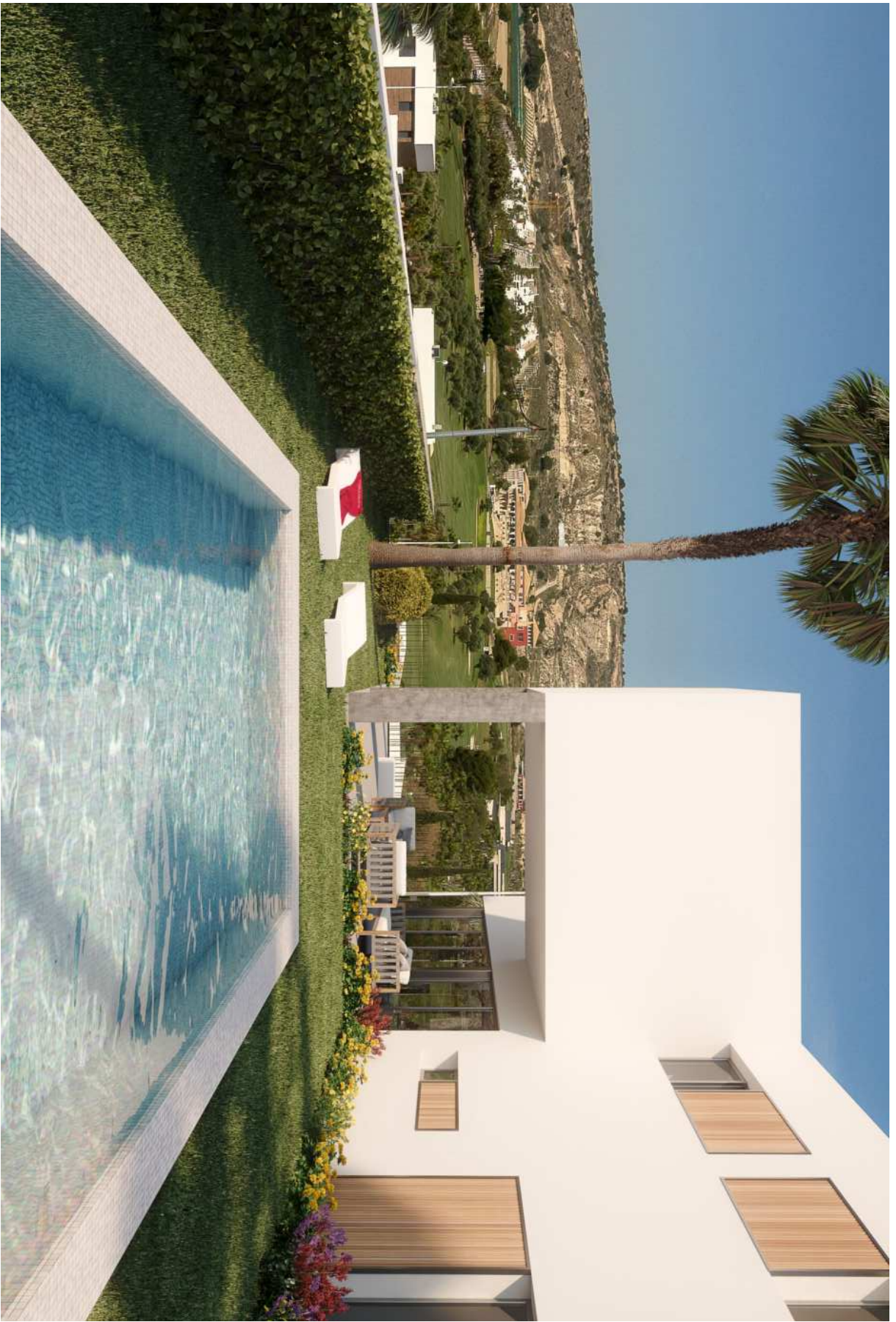
The built-in sink is completed with a GRB high pipe tap model Kala, emphasizing the spectacular integrated extraction hood.

Bathroom finishes

The 60 by 30 cm white mate tiles in walls combine with great scale imitation Terrazzo porcelain and Italian shower. The shower comes equipped with a shower screen, tap and spray fittings model KALA from GRB. A hanging unit and sink over worktop with KALA mixer taps.

In ensuite bathroom a hanging unit with imitation wood worktop, white drawers and rectangular sink over worktop.





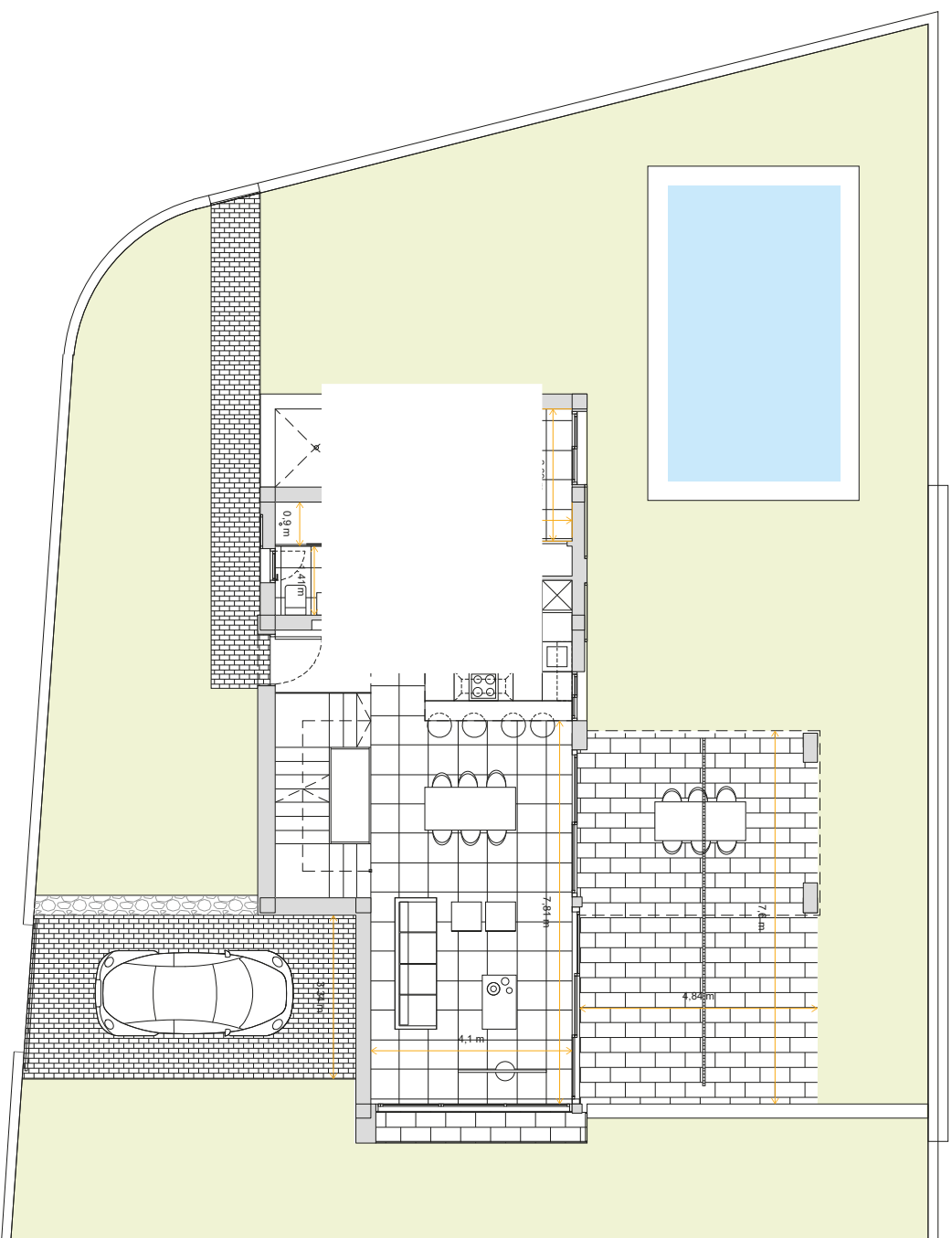
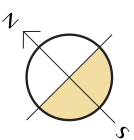
Ground floor.



Built surfaces

Built area	155,70
Pool area	8x4
Terraces area	59,00

SKC	43,71
Bedroom 1	12,60
Bathroom 1	4,20
Corridor	0,80
Hall	2,50
Stairs	6,40
Terrace	39,20



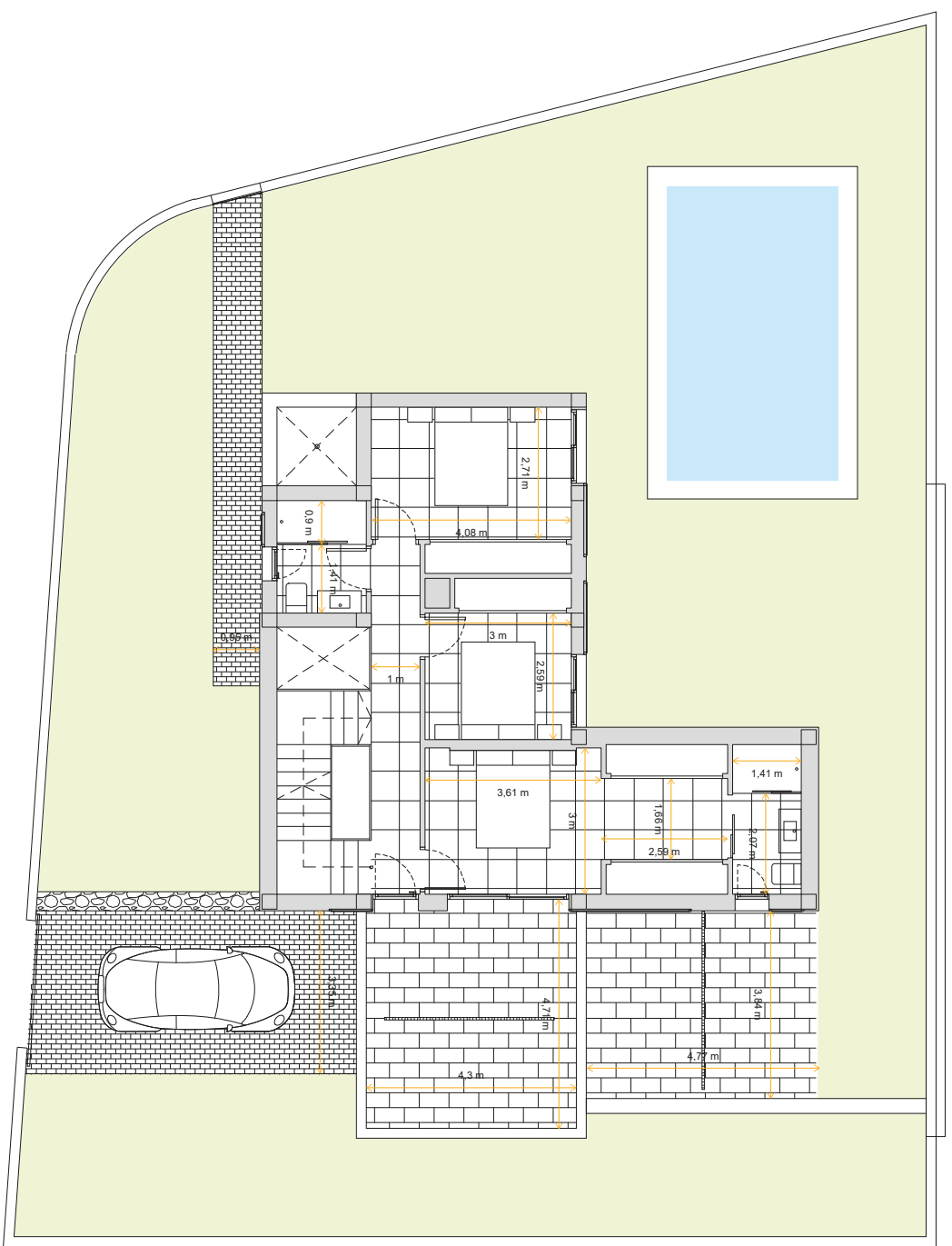
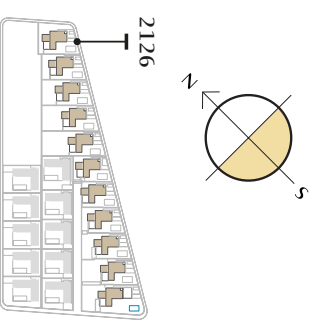
First floor.



Built surfaces

Built area	155,70
Pool area	8x4
Terraces area	59,00

Bedroom 2	19,00
Bedroom 3	9,50
Bedroom 4	13,20
Bathroom 2	4,30
Bathroom 3	4,20
Corridor	7,20
Stairs	6,40



**BUILDING
YOUR TIME**

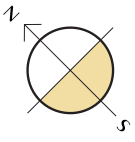
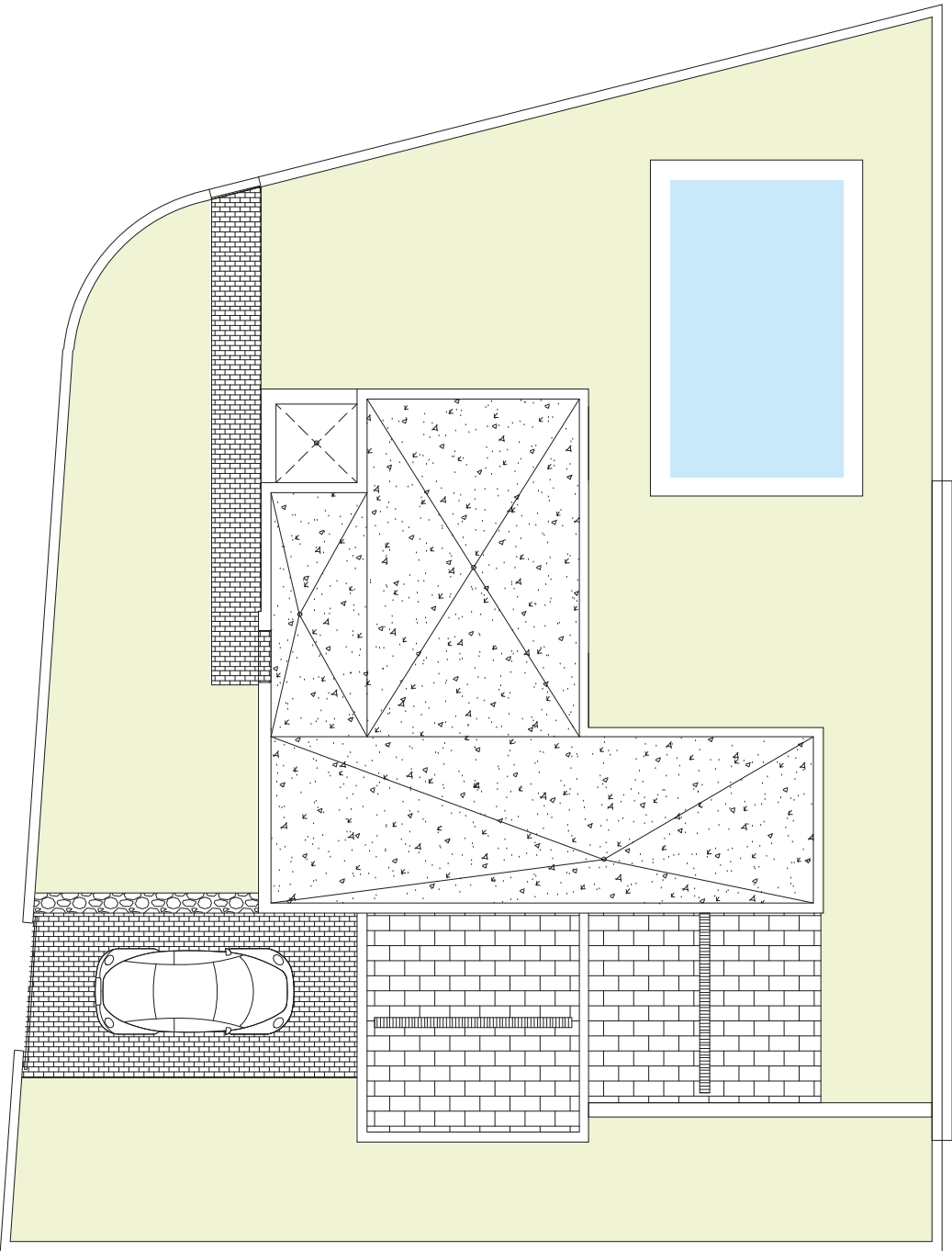
Legal Notice: Standard floor plan, which does not include the common use areas. Each residence has its own floor plan, which may vary slightly from the standard one. The furniture and household items that appear in the plan are merely for decorative purposes. This is not a contractual document. This plan can be modified by the Project Management team according to construction or design needs.

All measures are expressed in M2.



Built surfaces

Built area	155,70
Pool area	8x4
Terraces area	59,00



**BUILDING
YOUR TIME**

Legal Notice: Standard floor plan, which does not include the common use areas. Each residence has its own floor plan, which may vary slightly from the standard one. The furniture and household items that appear in the plan are merely for decorative purposes. This is not a contractual document. This plan can be modified by the Project Management Team according to construction or design needs.

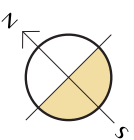
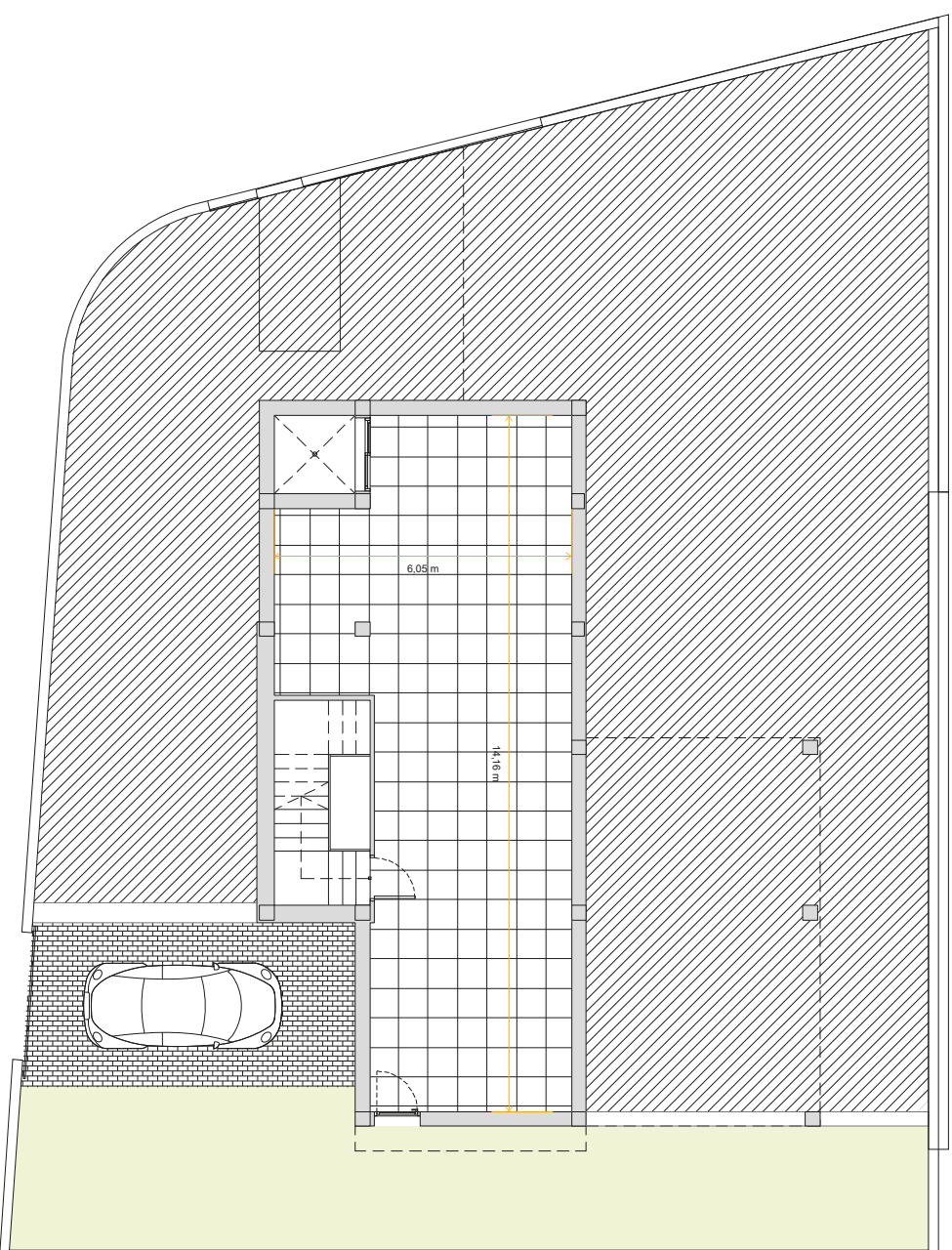
All measures are expressed in M2.

Basement Floor



Built surfaces

Built area	155,70
Pool area	8x4
Terraces area	59,00
Basement area	82,90
Parking	28,00



BUILDING YOUR TIME

Legal Notice: Standard floor plan, which does not include the common use areas. Each residence has its own floor plan, which may vary slightly from the standard one. The furniture and household items that appear in the plan are merely for decorative purposes. This is not a contractual document. This plan can be modified by the Project Management Team according to construction or design needs.

All measures are expressed in M2.

Ground floor.

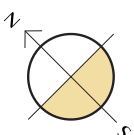


Built surfaces

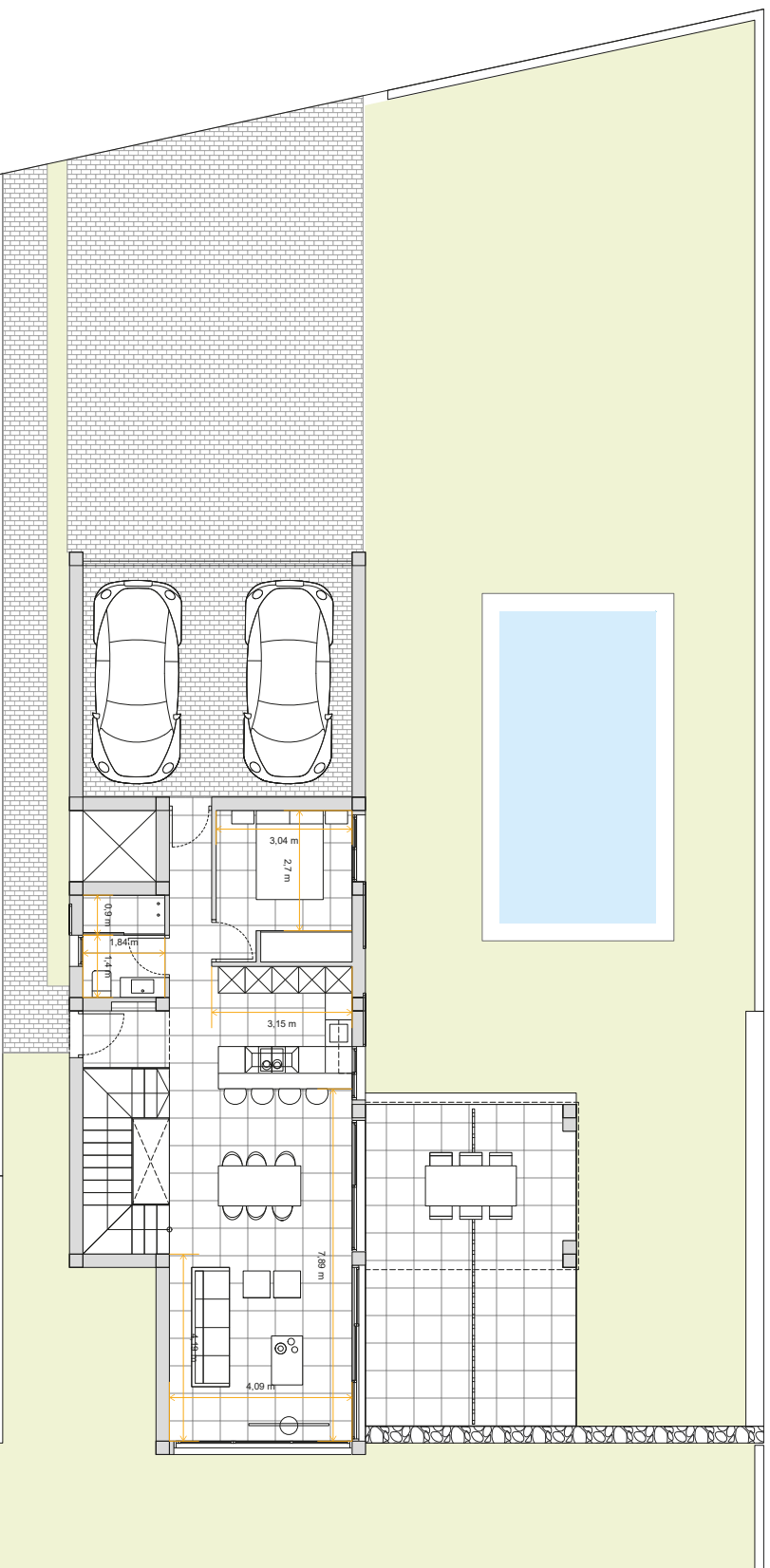
Built area	155,70
Pool area	8x4
Terraces	59,00

SKC	43,70
Bedroom 1	12,60
Bathroom 1	4,20

Corridor	0,80
Hall	2,47
Stairs	6,40
Parking	31,40



2117



BUILDING YOUR TIME

Legal Notice: Standard floor plan, which does not include the common use areas. Each residence has its own floor plan, which may vary slightly from the standard one. The furniture and household items that appear in the plan are merely for decorative purposes. This is not a contractual document. This plan can be modified by the Project Management Team according to construction or design needs.

All measures are expressed in M2.

First floor.

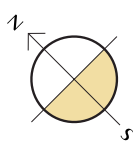


Built surfaces

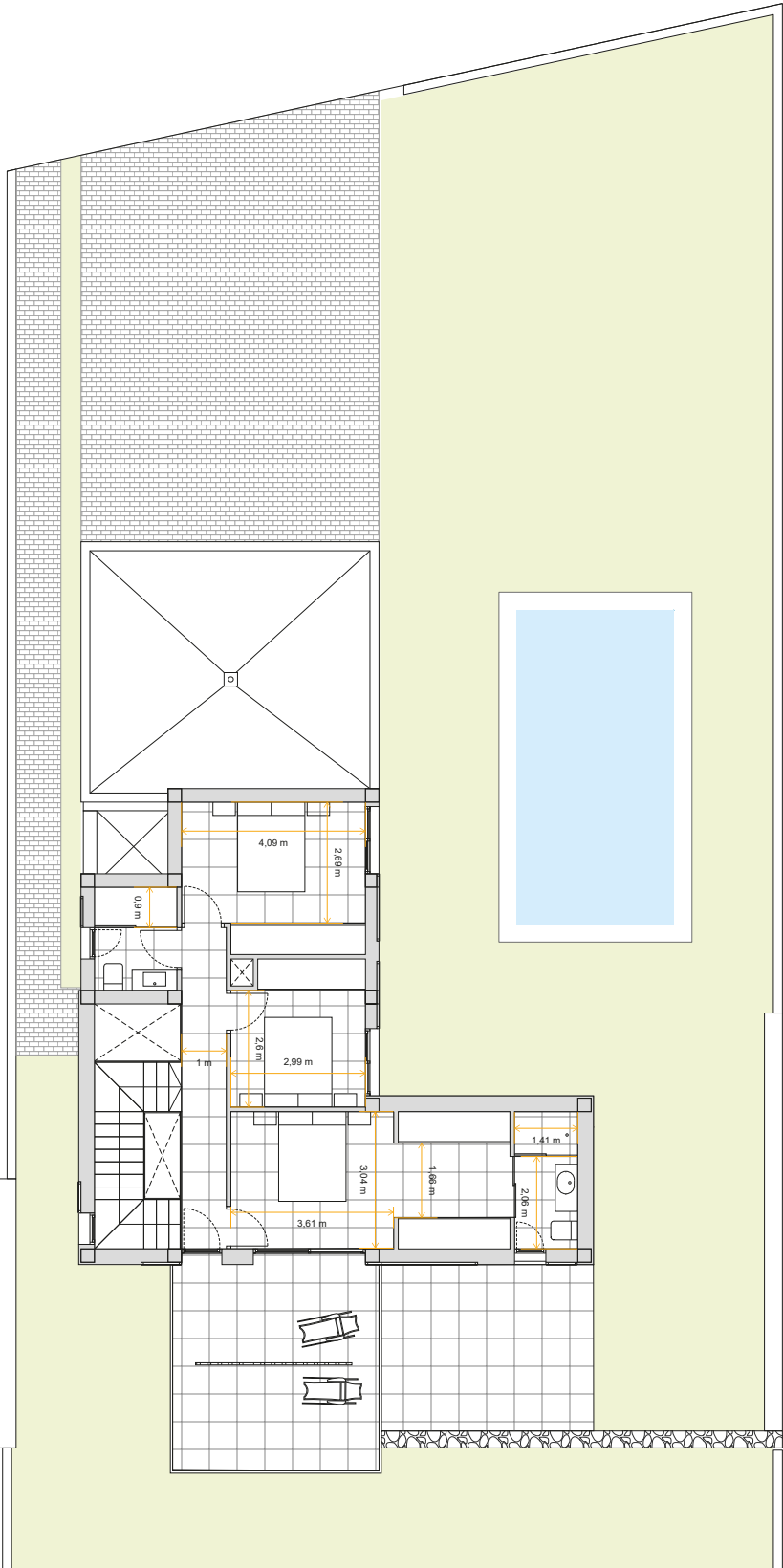
Built area	155,70
Pool area	8x4
Terraces	59,00

Bedroom 2	19,00
Bedroom 3	9,50
Bedroom 4	13,17
Bathroom 2	4,30

Bathroom 3	4,30
Corridor	7,2
Stairs	6,40



2117



BUILDING YOUR TIME

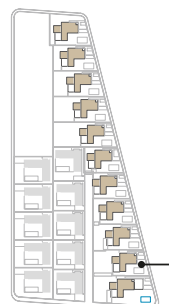
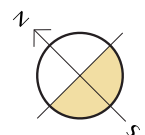
Legal Notice: Standard floor plan, which does not include the common use areas. Each residence has its own floor plan, which may vary slightly from the standard one. The furniture and household items that appear in the plan are merely for decorative purposes. This is not a contractual document. This plan can be modified by the Project Management Team according to construction or design needs.

All measures are expressed in M2.

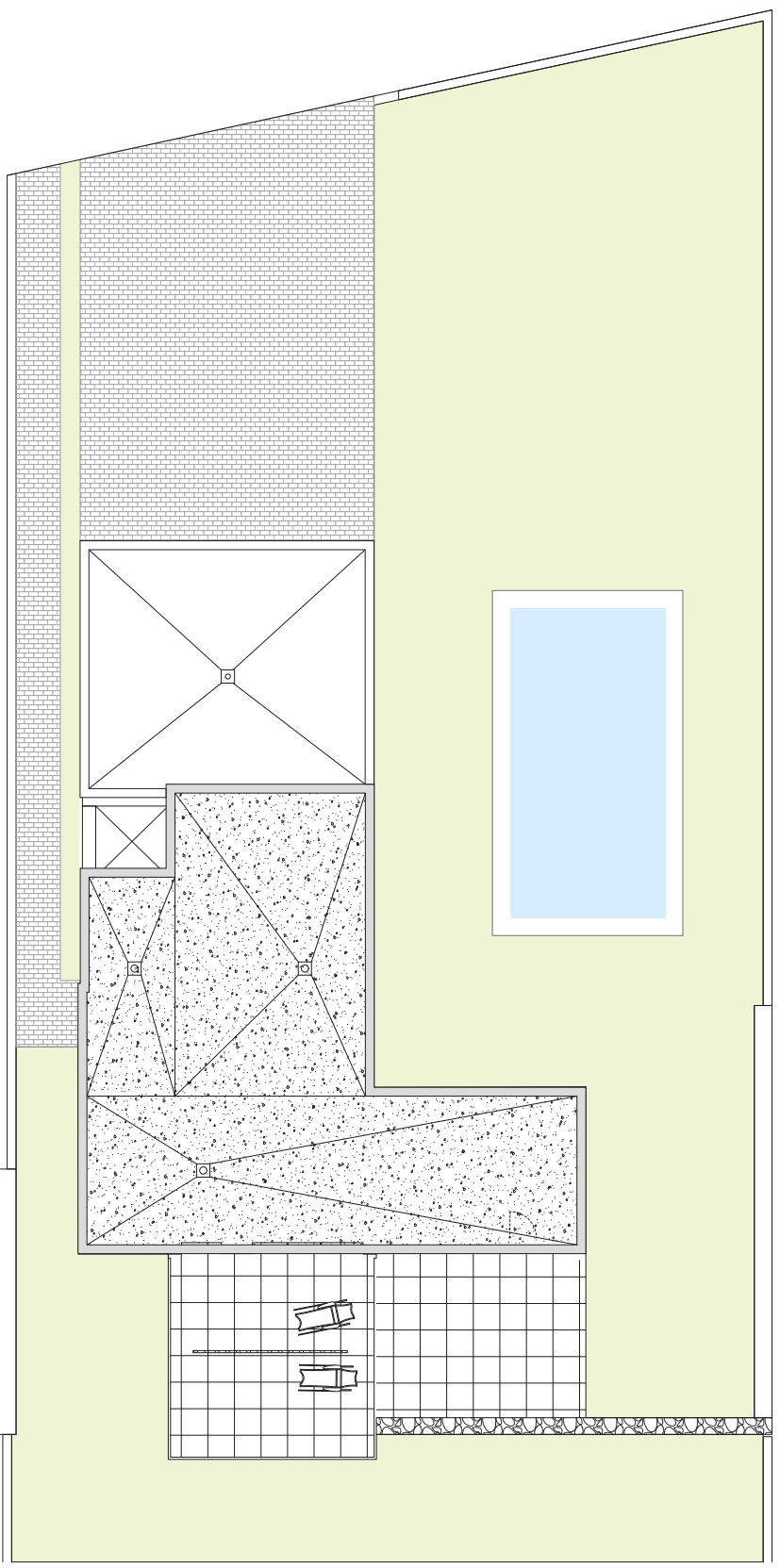


Built surfaces

Built area	155,70
Pool area	8x4
Terraces	59,00



2117



**BUILDING
YOUR TIME**

Legal Notice: Standard floor plan, which does not include the common use areas. Each residence has its own floor plan, which may vary slightly from the standard one. The furniture and household items that appear in the plan are merely for decorative purposes. This is not a contractual document. This plan can be modified by the Project Management Team according to construction or design needs.

All measures are expressed in M2.

Basement Floor

Built surfaces

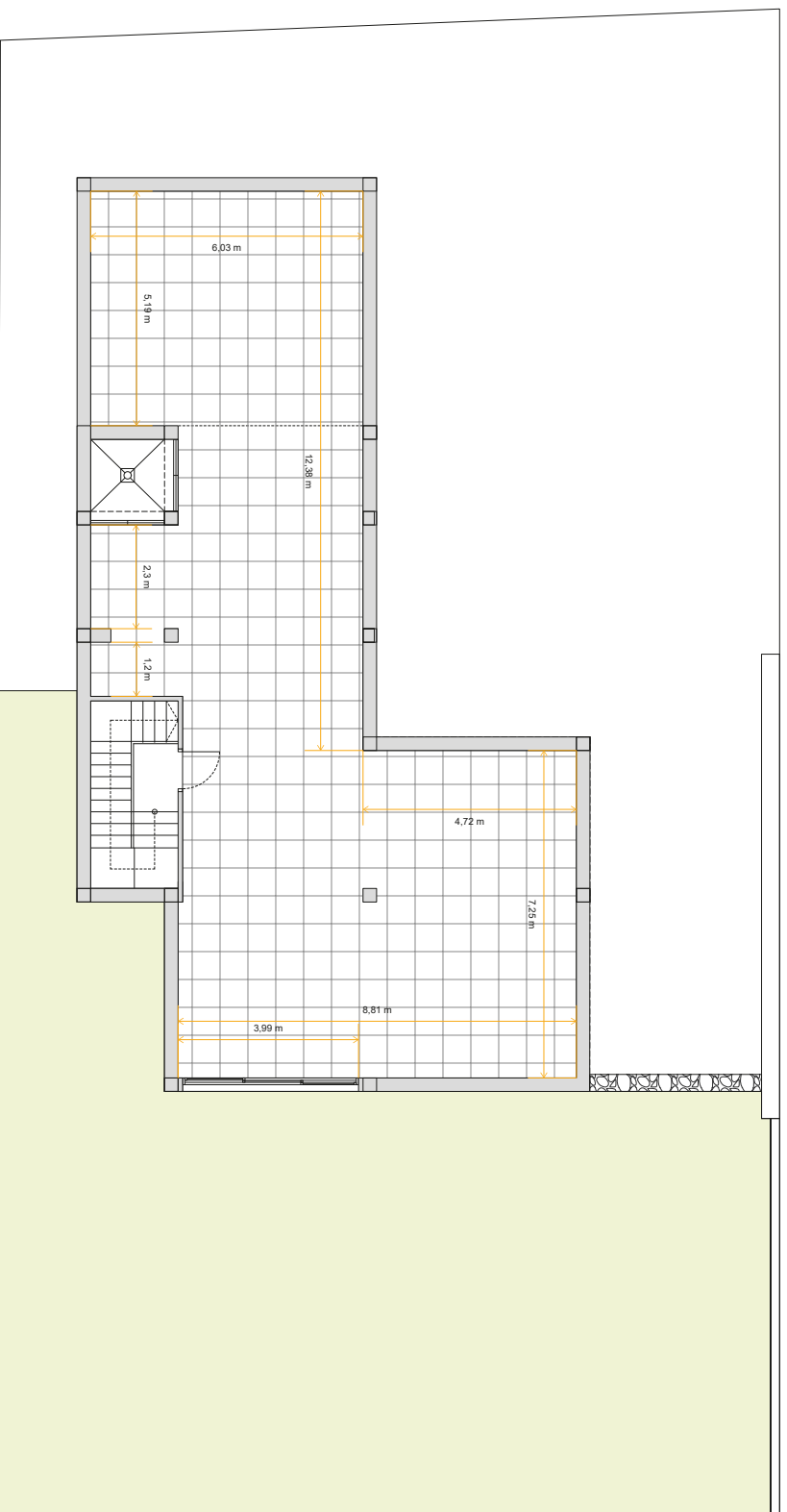
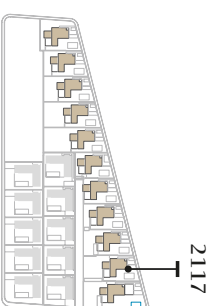
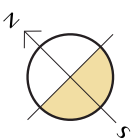
Built area	155,70
Pool area	8x4
Terraces	59,00



4



3



Legal Notice: Standard floor plan, which does not include the common use areas. Each residence has its own floor plan, which may vary slightly from the standard one. The furniture and household items that appear in the plan are merely for decorative purposes. This is not a contractual document. This plan can be modified by the Project Management team according to construction or design needs.

All measures are expressed in M2.