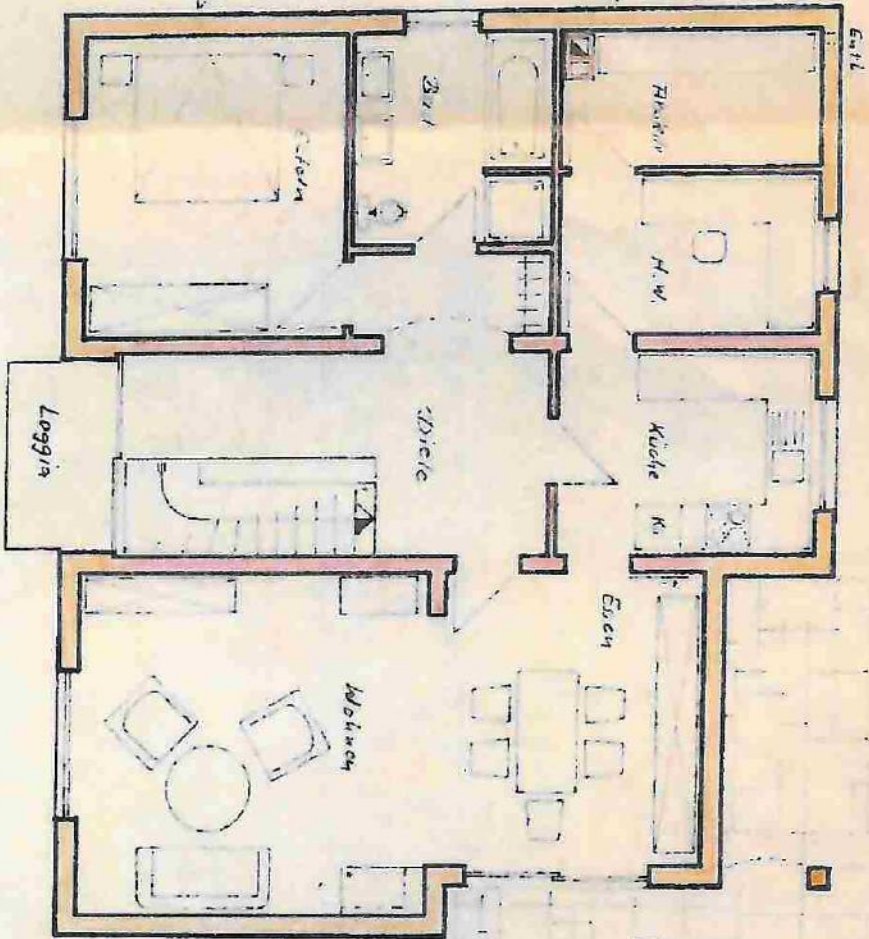


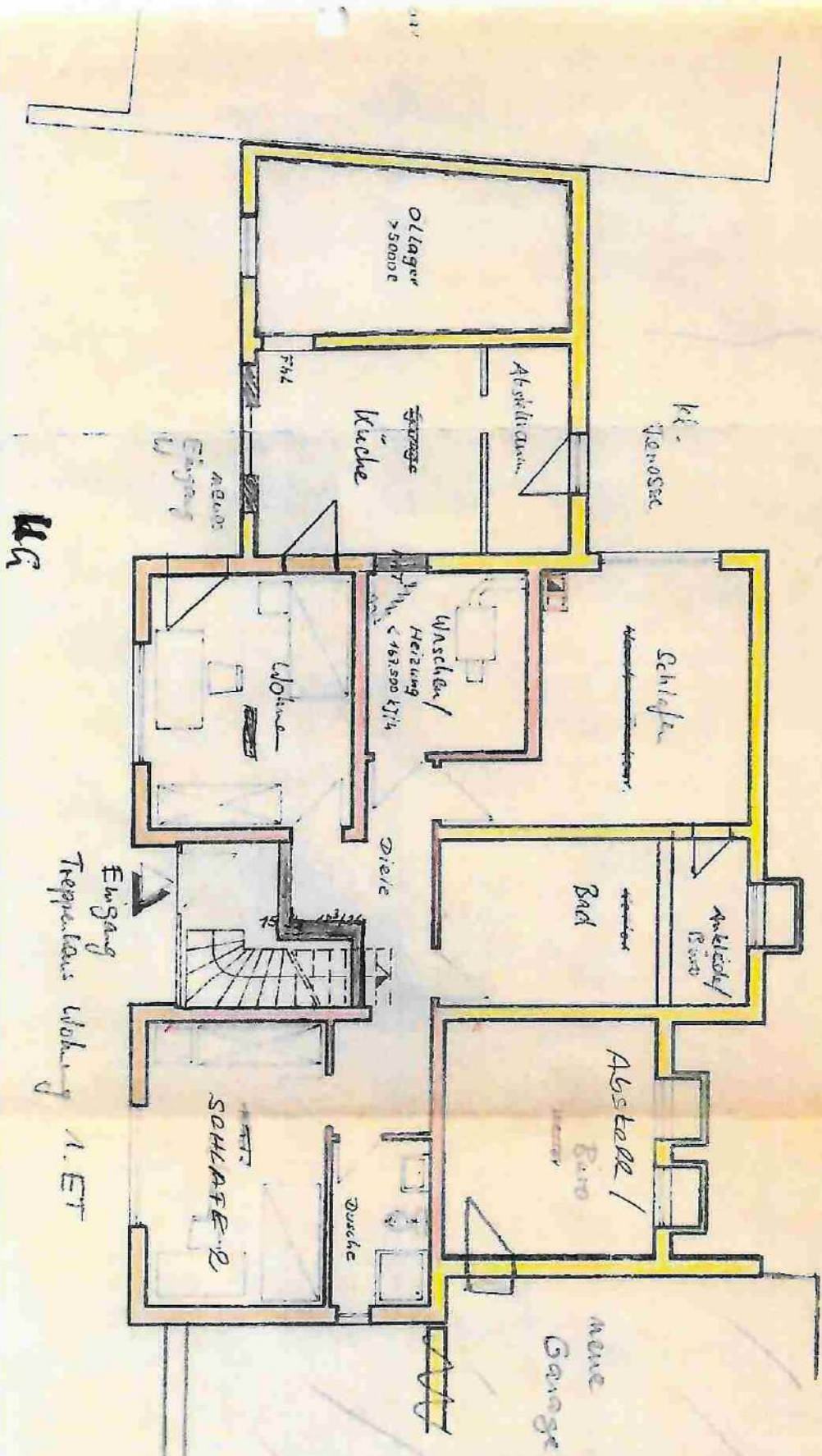
2c

2F



30	4,805	415	2,26	24	2,26	30	4,25	1,95
	2,825	1,01	1,26	1,49	1,26	4,025	3,95	30, 35
12,86								

5,38	2,26	2,26	4,0	4,0	5,0
2,825	1,01	1,26	1,49	1,26	3,95
4,26	2,26	2,26	4,0	4,0	5,0



24	251	24	151	30	4.20	21	2.76	21	21	30.75
			101.400		5.55		101.430	44	101.59	101.50
			24				26	26	26	30.25

6.20

12.86

WA

1. ET