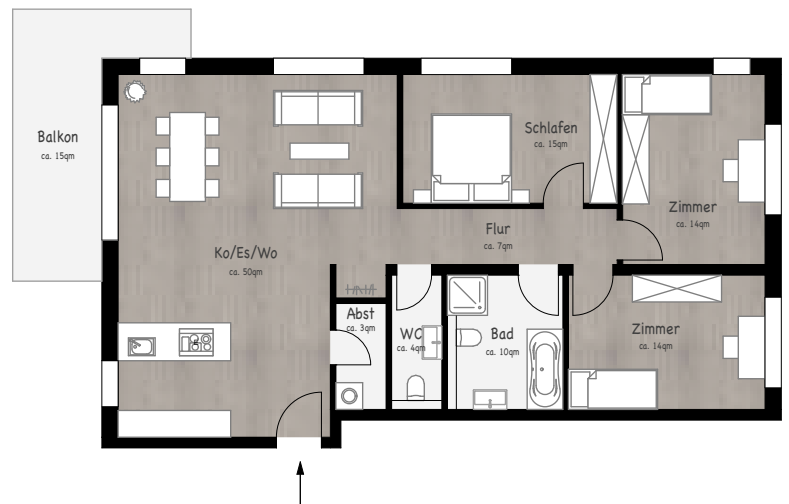


Exclusive living in a family-friendly area

— Only a 5-minute walk from the MIS —

- 4 room flat with 125 sqm
- new building / first occupation
- with or without kitchen possible
- Parking space for car and bicycles
- in new development area for families
- Playground in the neighbourhood
- Available from October 2024
- Other flat types also available



For contact an e-mail to: immobilien@gutperle24.de

