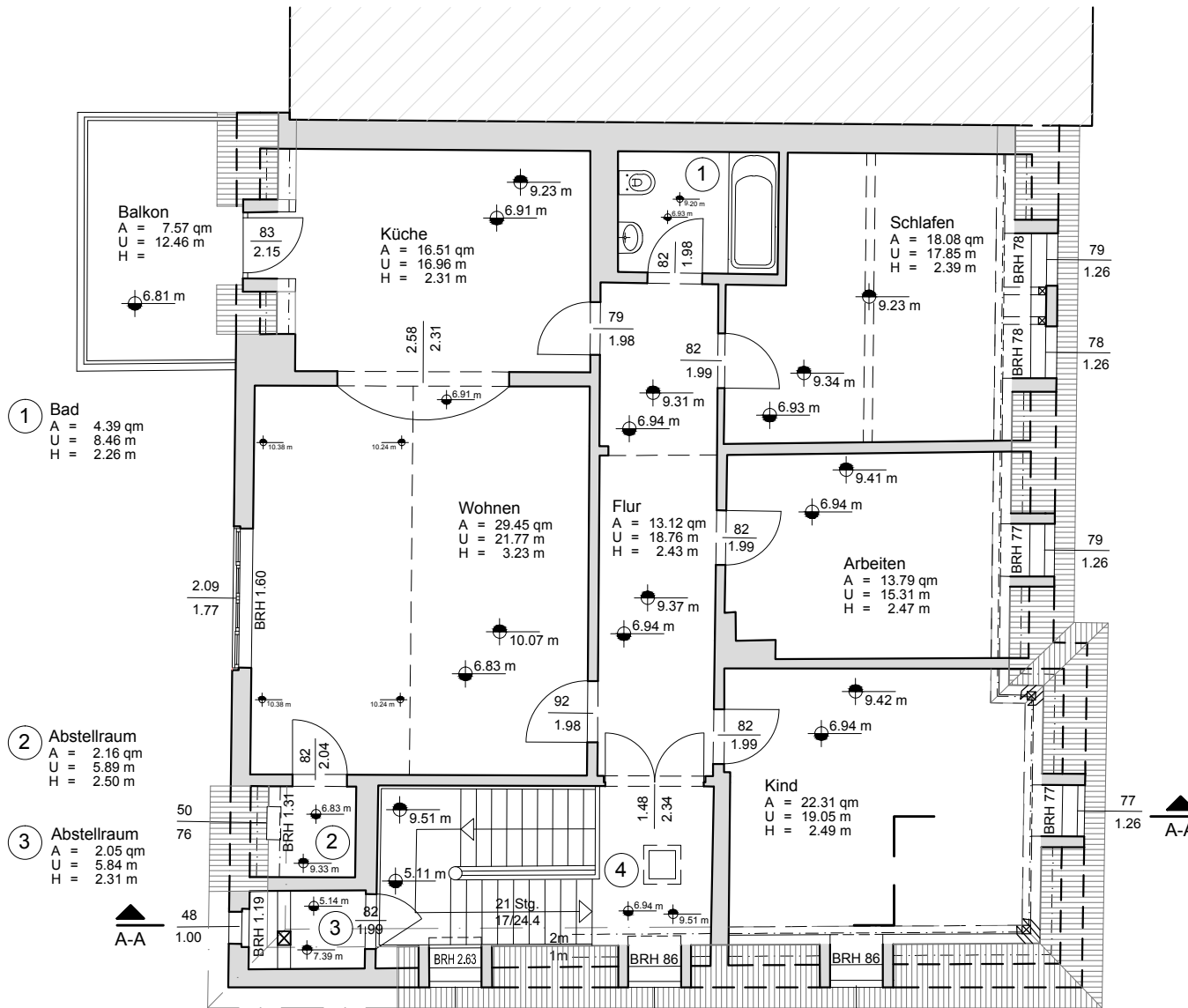


14.74							
3.18	11.55						
2.39	12.33						
2.39	37	4.95	41	2.42	13	3.67	41
	29	5.03	15	1.77	10	4.60	38
	29	5.05	15	1.76	14	4.56	37

13.10
3.89
3.35
2.3
5.83
9.22
1.16
1.36
2.1
1.18
2.9
4.5



1.81
1.6
4.34
2.45
1.4
1.7
3.08
4.79
1.5
1.5
4.74
2.93
3.5
5.17
7.76
12.93

28	1.29	35	5.04	15	5.04	33
31	1.74	16	5.03	27	4.97	34
12.39						
12.81						