

MEHRFAMILIENHAUS  
KILLBERGWEG IN OBERSCHWANDORF



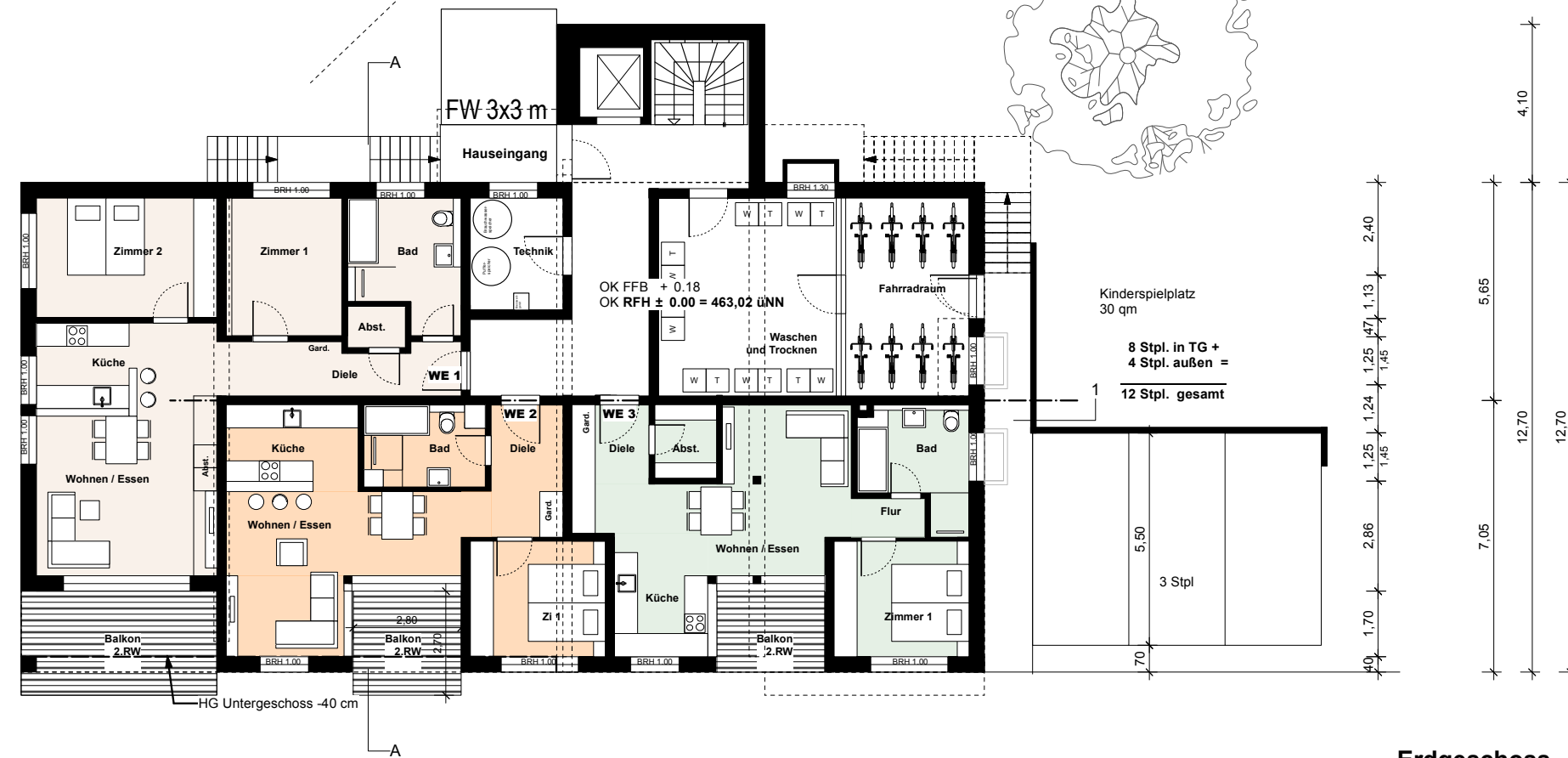
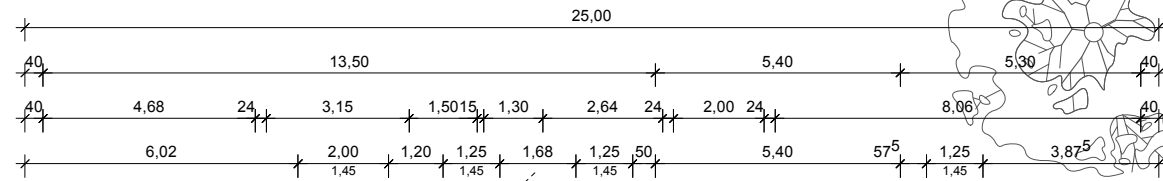
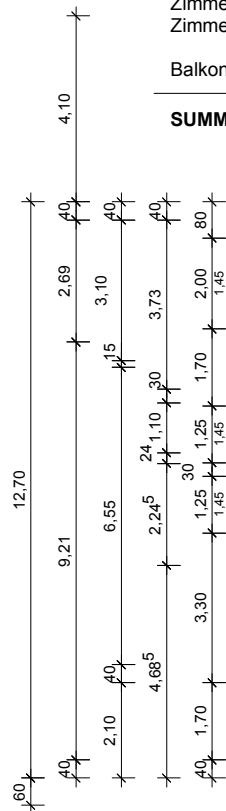
### Erdgeschoss

#### Wohnung 1

Diele	8,30 qm
Abstellraum	1,57 qm
Bad	8,76 qm
Küche	6,27 qm
Essen/Wohnen	24,39 qm
Zimmer 1	10,74 qm
Zimmer 2	14,51 qm

Balkon (13,32 qm zur Hälfte) 6,66 qm

**SUMME 81,20 qm**



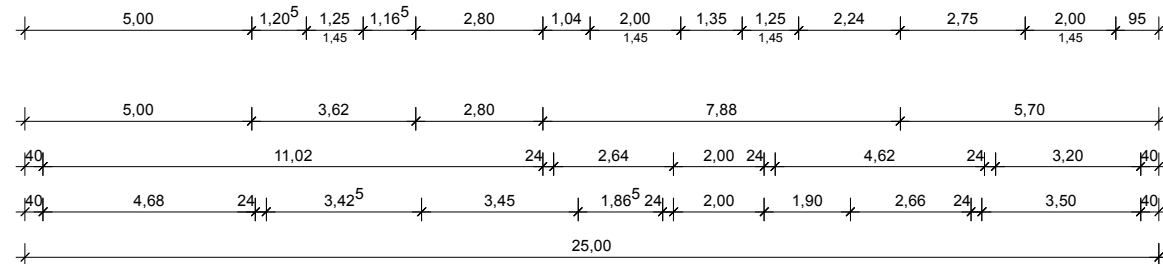
### Erdgeschoss

#### Wohnung 2

Diele	7,32 qm
Bad	6,41 qm
Küche	7,72 qm
Essen/Wohnen	19,76 qm
Zimmer 1	10,50 qm

Balkon (7,56 qm zur Hälfte) 3,78 qm

**SUMME 55,49 qm**



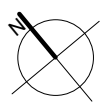
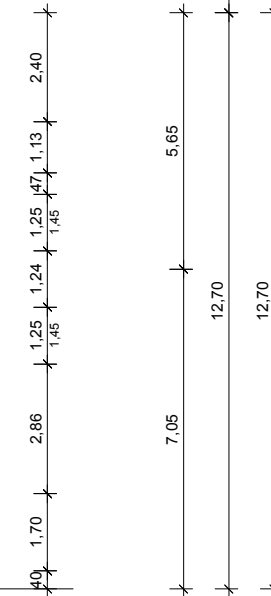
### Erdgeschoss

#### Wohnung 3

Diele	4,10 qm
Flur	1,90 qm
Abstellraum	3,04 qm
Bad	7,36 qm
Küche	7,74 qm
Essen/Wohnen	19,56 qm
Zimmer 1	10,50 qm

Balkon (5,88 qm zur Hälfte) 2,94 qm

**SUMME 57,14 qm**



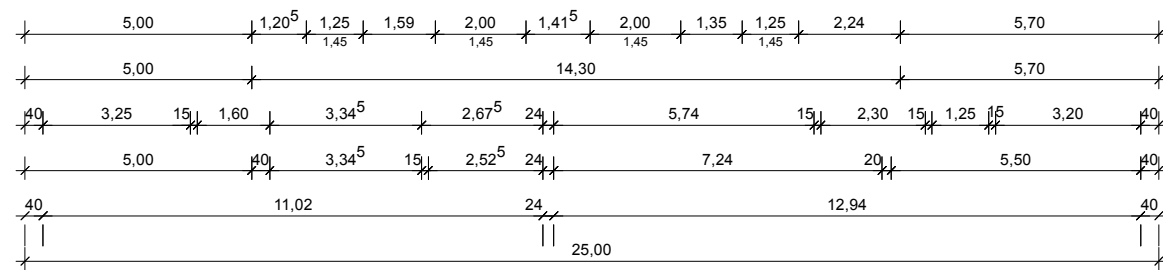
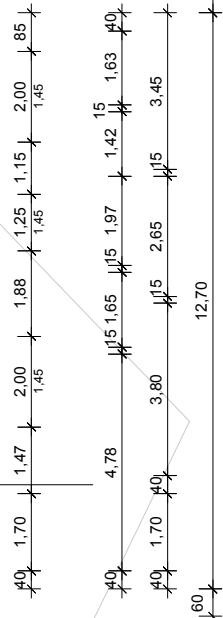
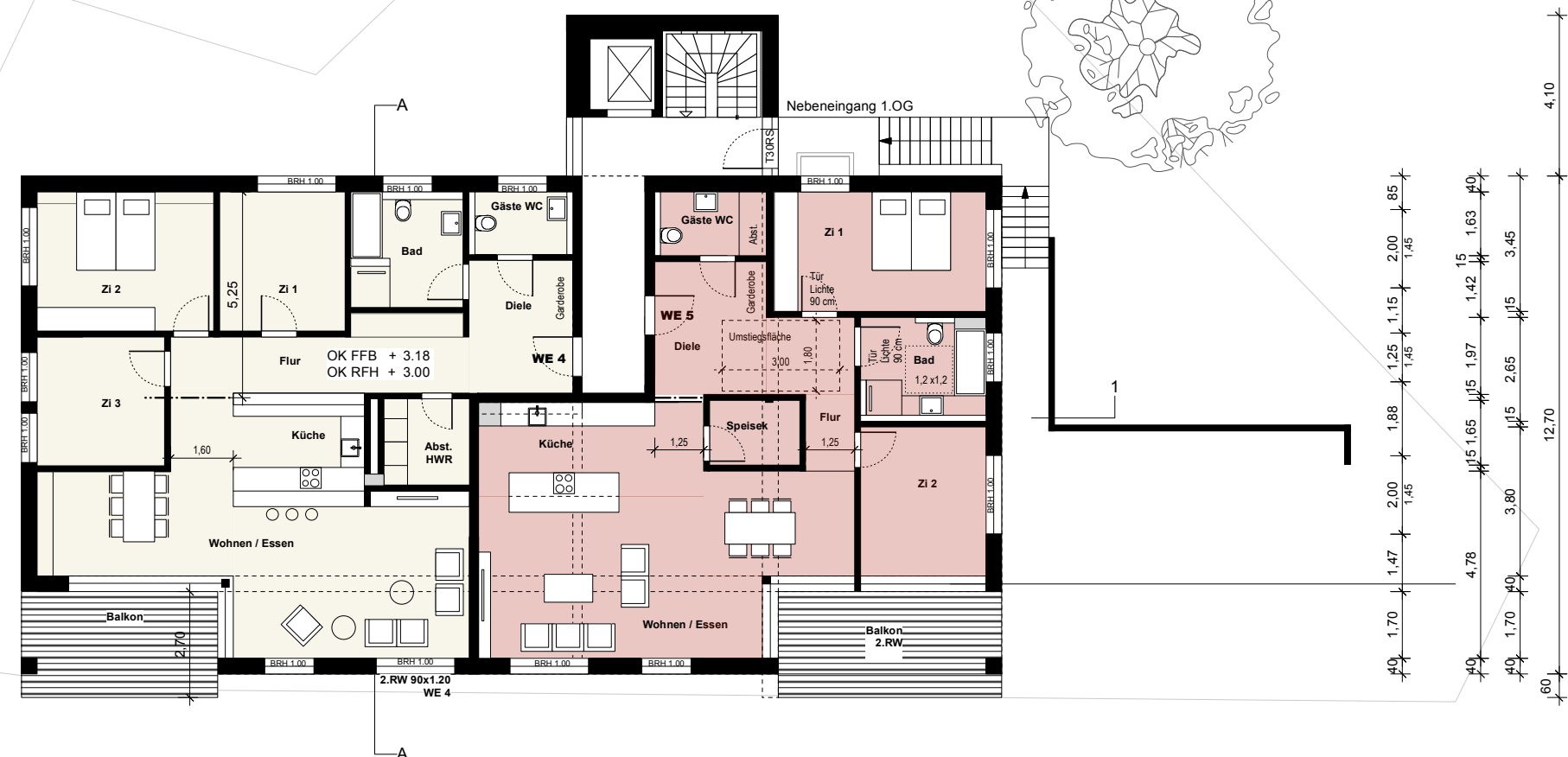
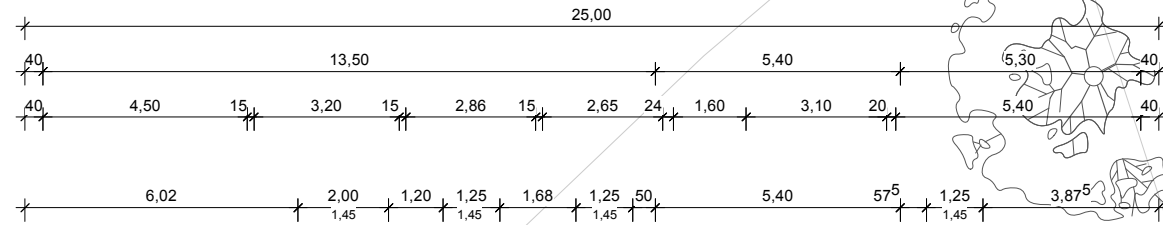
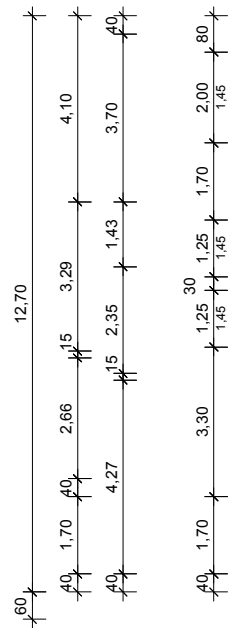
### 1. Obergeschoss

#### Wohnung 4

Diele	8,96 qm
Abstellraum	4,79 qm
Flur	12,58 qm
Bad	8,14 qm
Gäste WC	4,04 qm
Küche	11,58 qm
Essen/Wohnen	39,00 qm
Zimmer 1	11,36 qm
Zimmer 2	15,98 qm
Zimmer 3	10,73 qm

Balkon (13,32 qm zur Hälfte) 6,66 qm

**SUMME 133,82 qm**



Wohnungen 5 und 7 im 1./2.OG barrierefrei, erreichbar über Aufzug und Zugang im UG

### 1. Obergeschoss

#### Wohnung 5

Diele	14,08 qm
Speisekammer	3,80 qm
Flur	2,44 qm
Bad	8,08 qm
Gäste WC	4,45 qm
Küche	13,58 qm
Essen/Wohnen	37,17 qm
Zimmer 1	16,47 qm
Zimmer 2	12,16 qm

Balkon (15,10 qm zur Hälfte) 7,55 qm

**SUMME 119,88 qm**

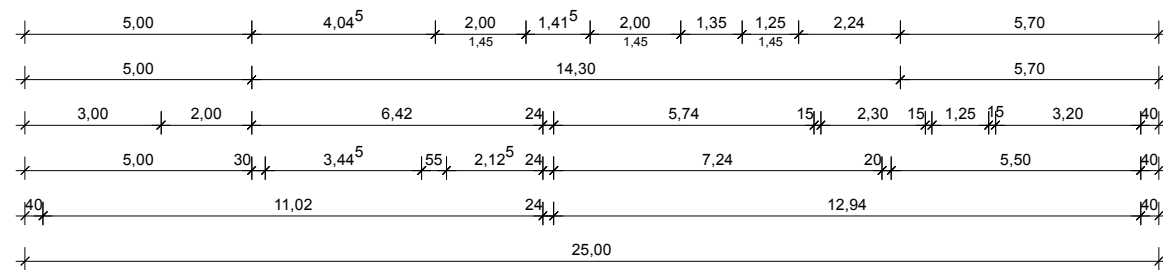
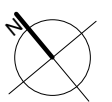
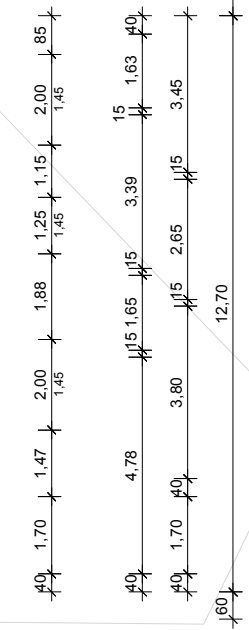
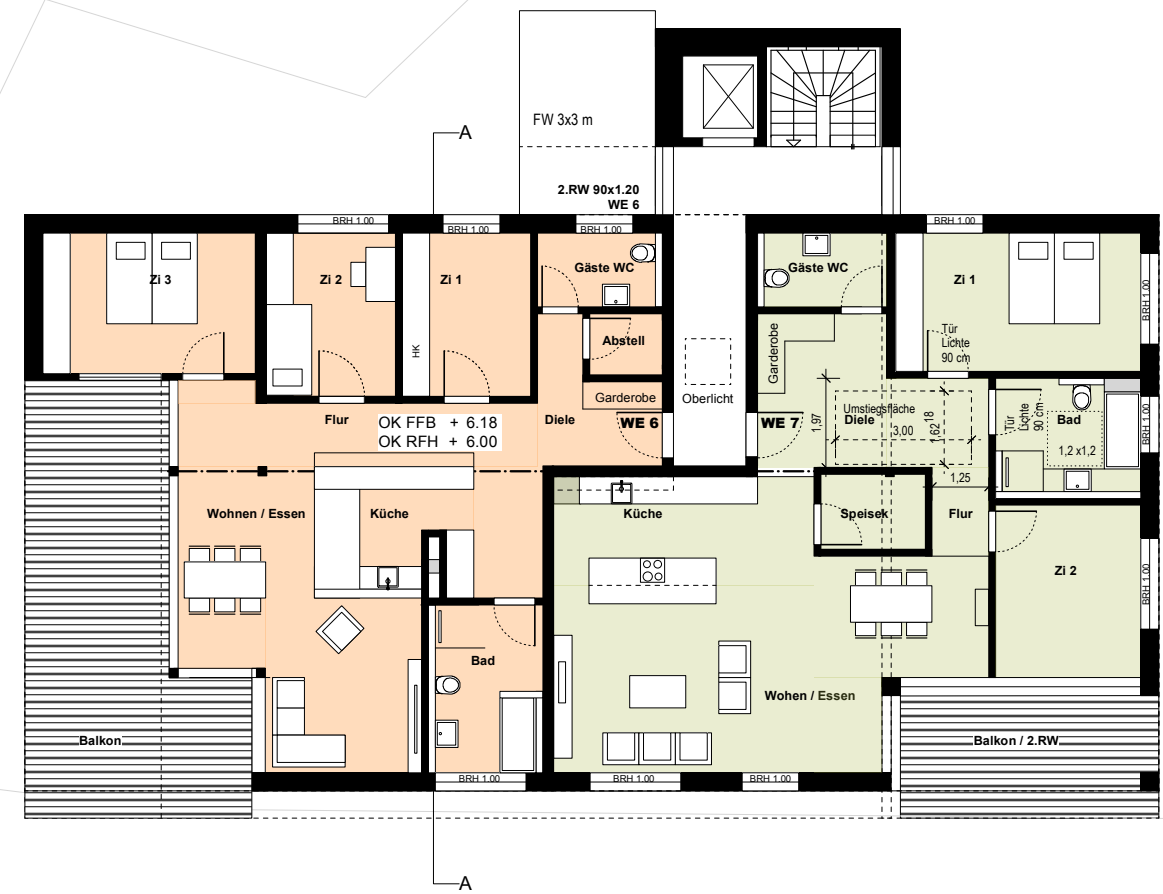
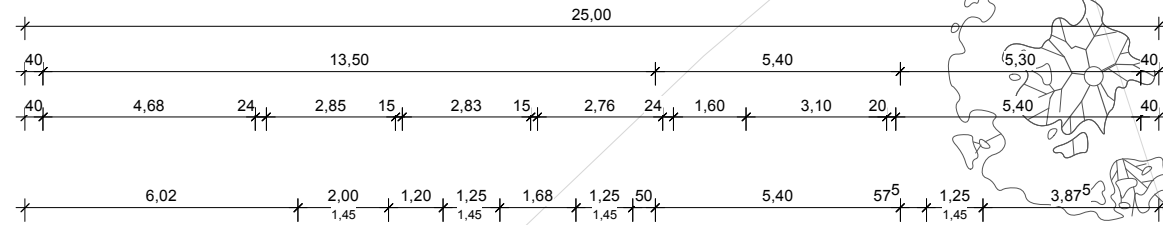
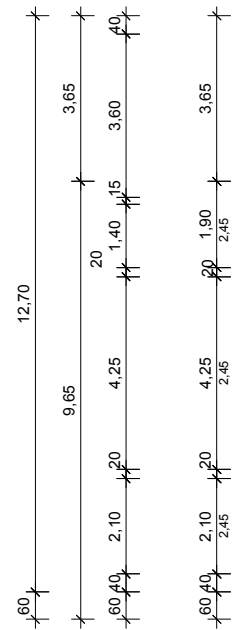
## 2. Obergeschoss

### Wohnung 6

Diele	11,90 qm
Abstellraum	2,16 qm
Flur	11,93 qm
Bad	9,14 qm
Gäste WC	4,49 qm
Küche	8,47 qm
Essen/Wohnen	24,95 qm
Zimmer 1	10,19 qm
Zimmer 2	10,26 qm
Zimmer 3	14,51 qm

Balkon (35,83 qm zur Hälfte) 17,92 qm

**SUMME 125,92 qm**



Wohnungen 5 und 7 im 1./ 2.OG barrierefrei, erreichbar über Aufzug und Zugang im UG

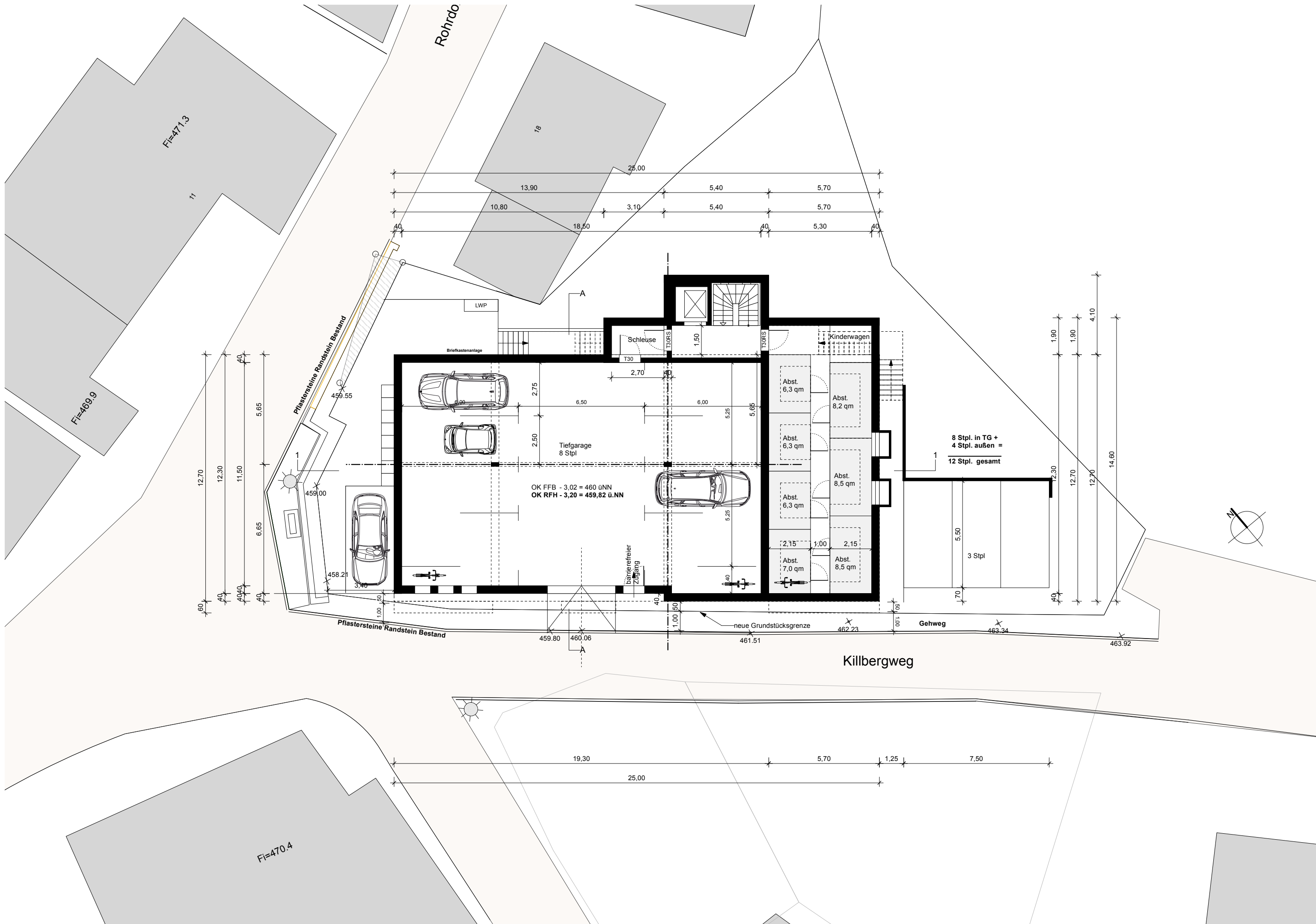
## 2. Obergeschoss

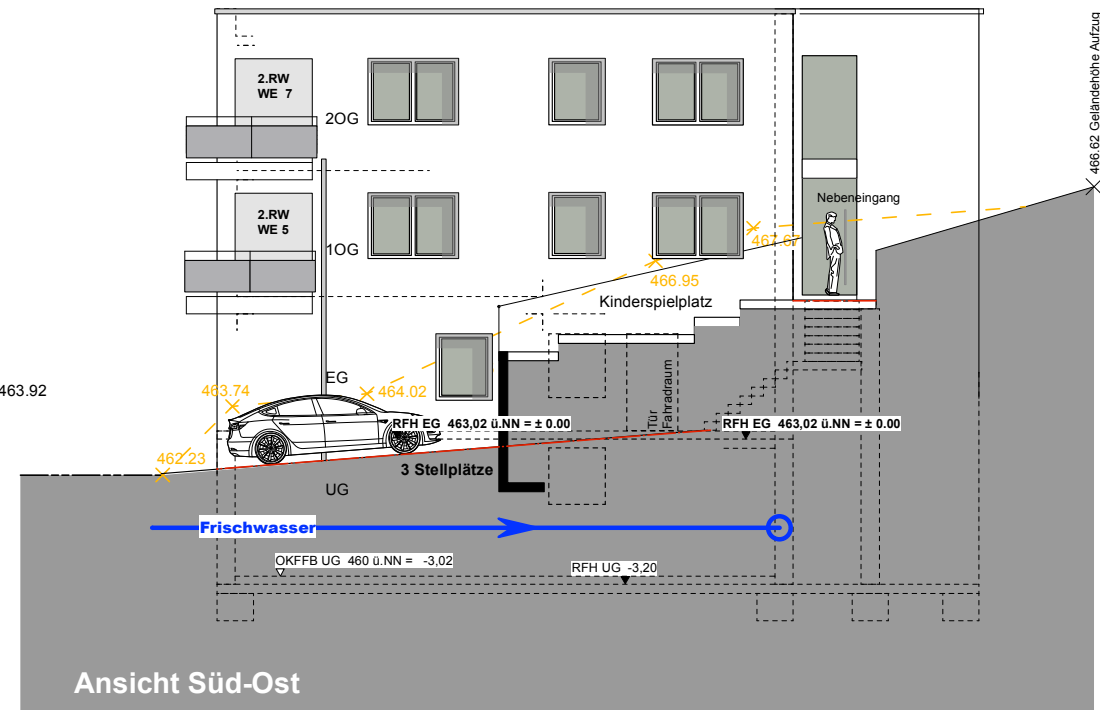
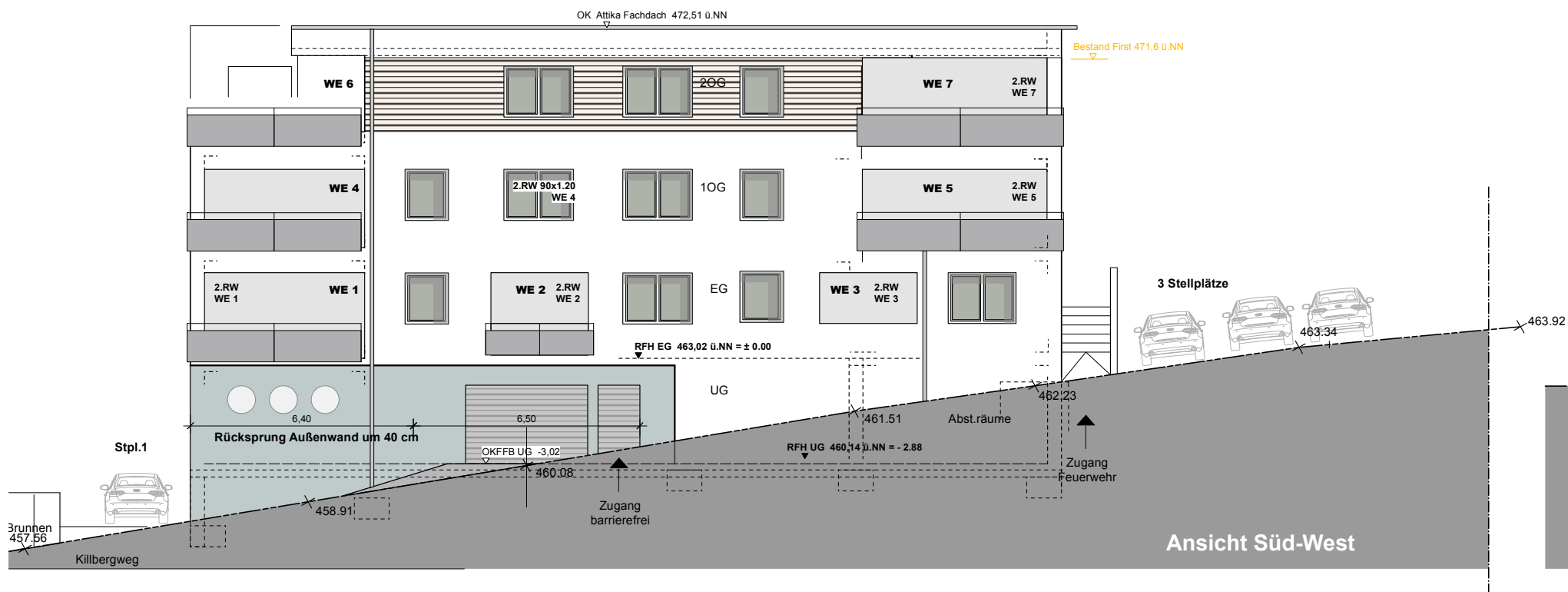
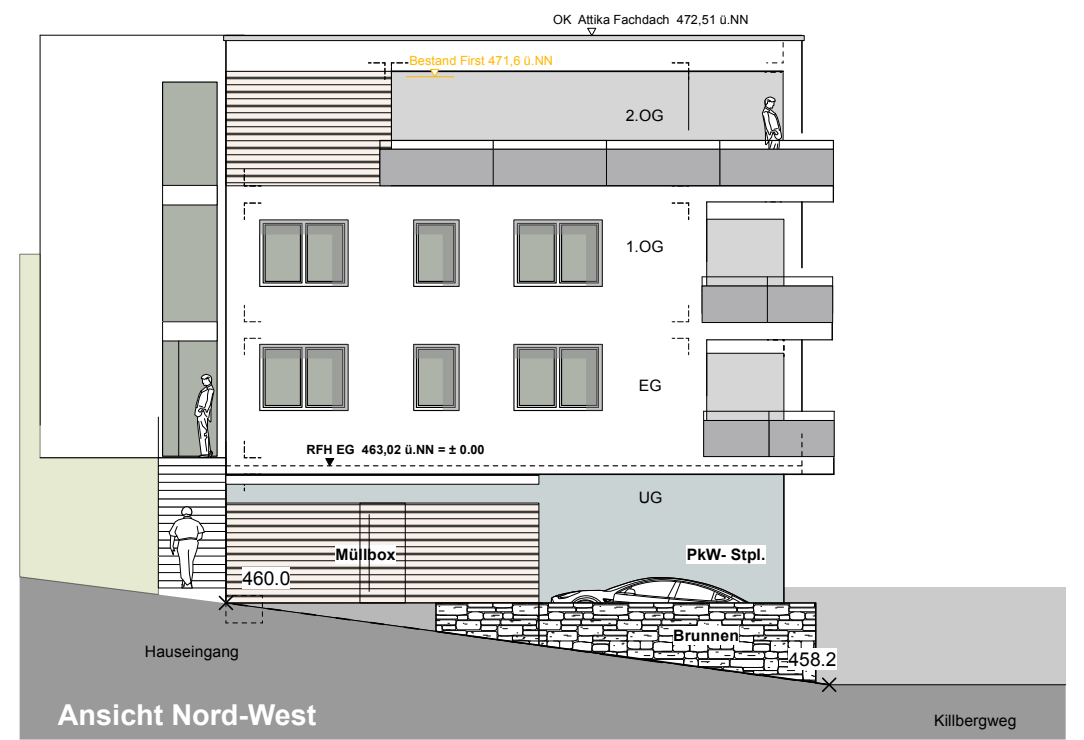
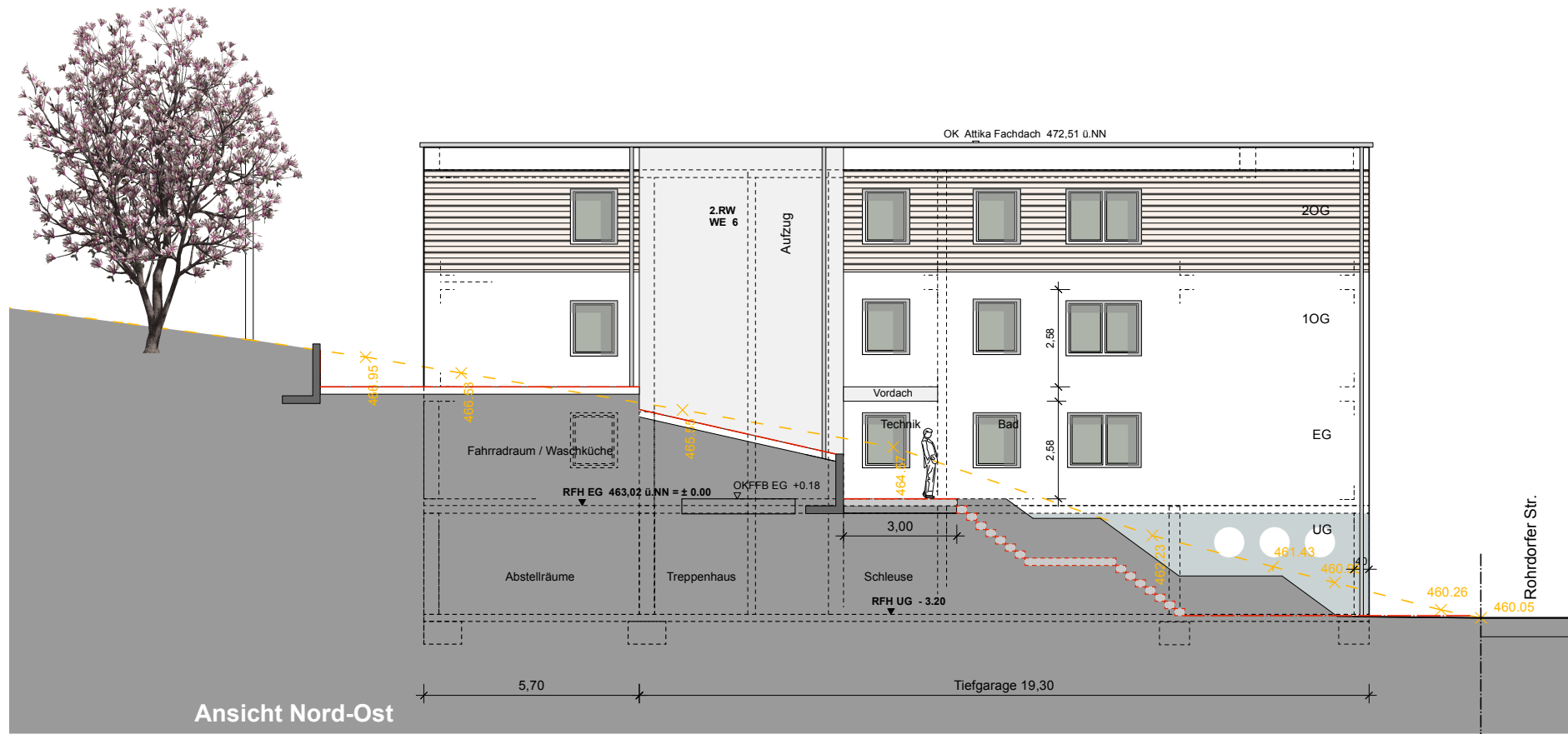
### Wohnung 7

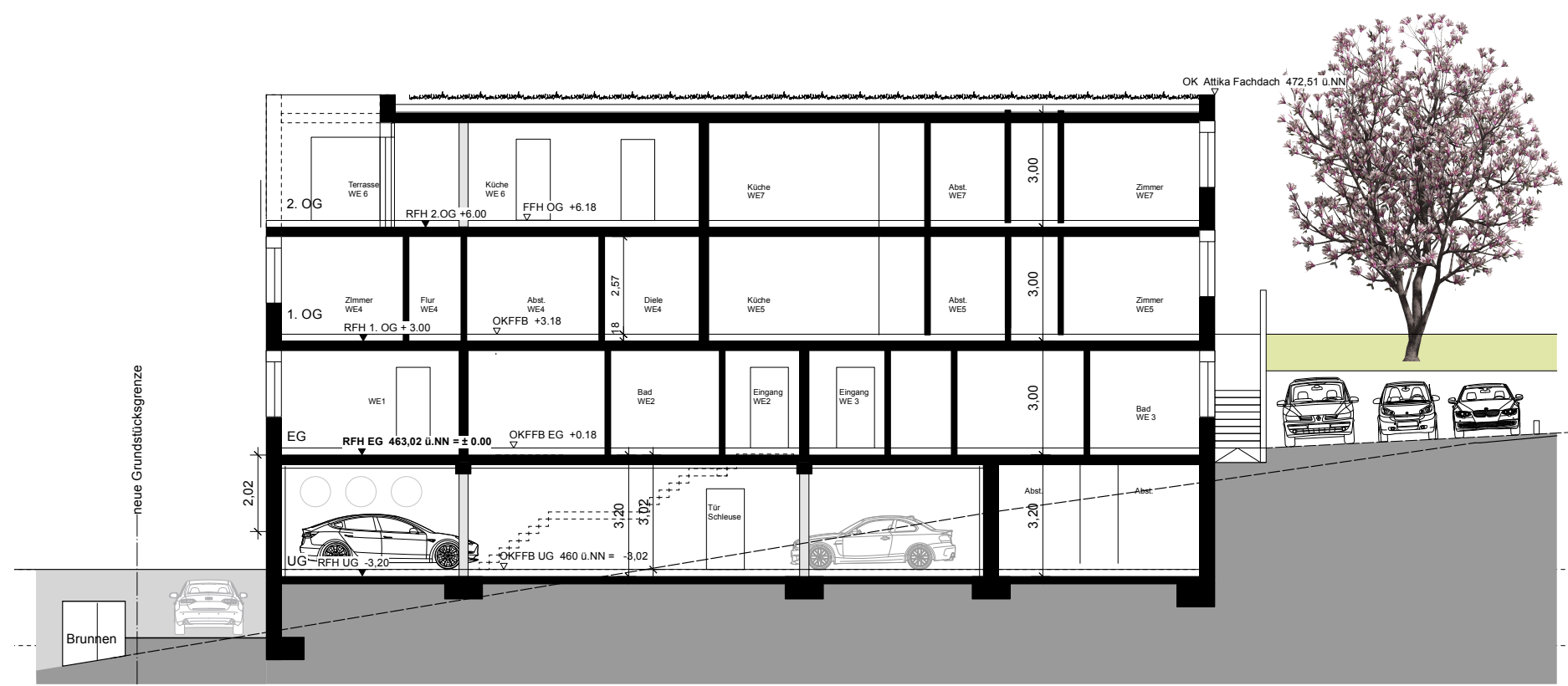
Diele	14,08 qm
Speisekammer	3,80 qm
Flur	2,44 qm
Bad	8,08 qm
Gäste WC	4,45 qm
Küche	13,58 qm
Essen/Wohnen	37,17 qm
Zimmer 1	16,47 qm
Zimmer 2	12,16 qm

Balkon (15,10 qm zur Hälfte) 7,55 qm

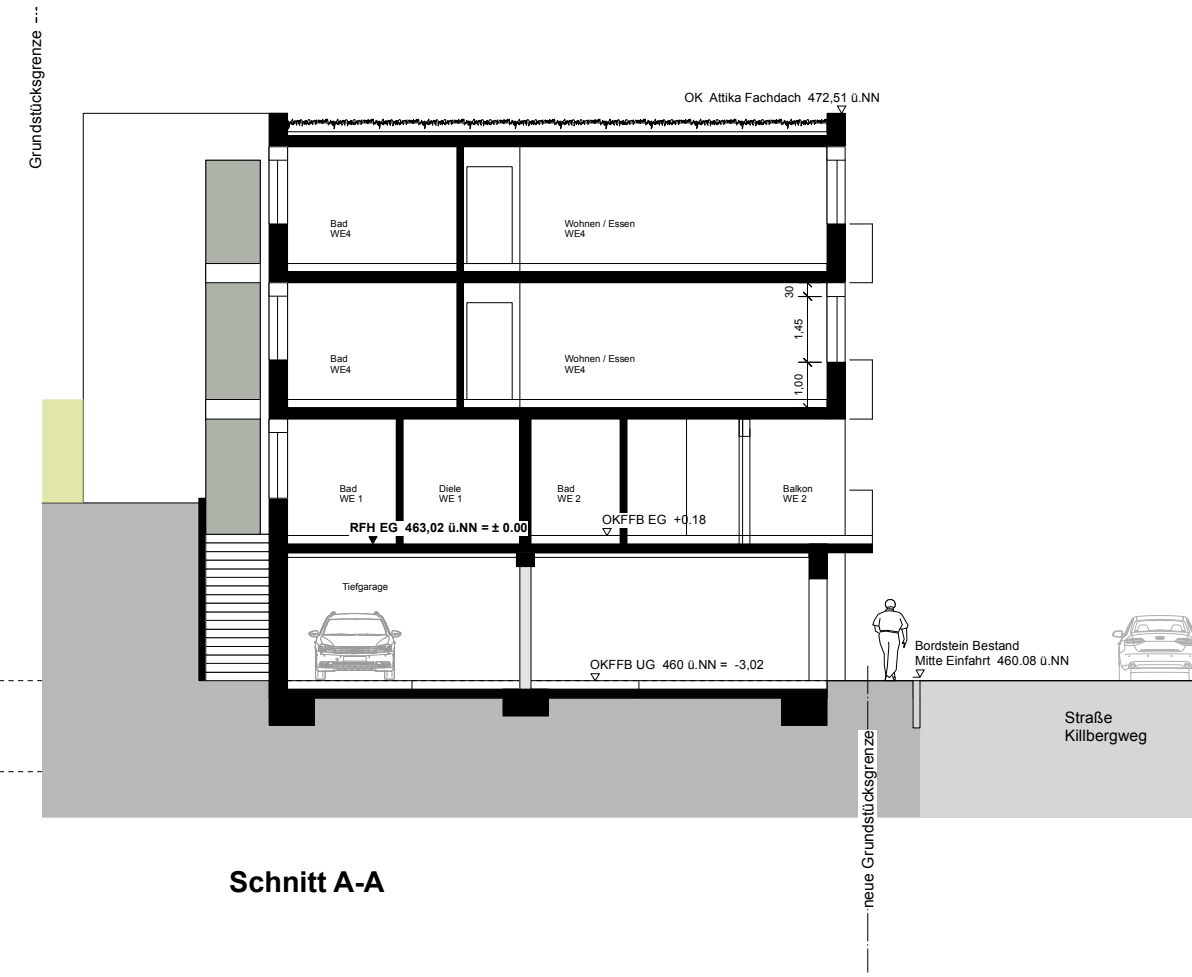
**SUMME 119,88 qm**







Schnitt 1-1



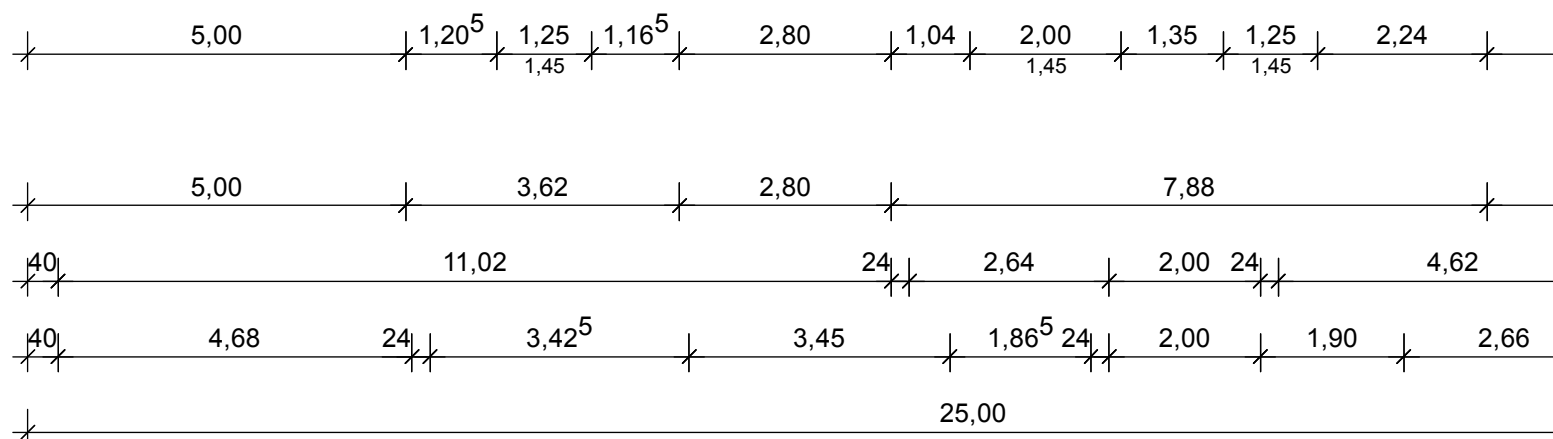
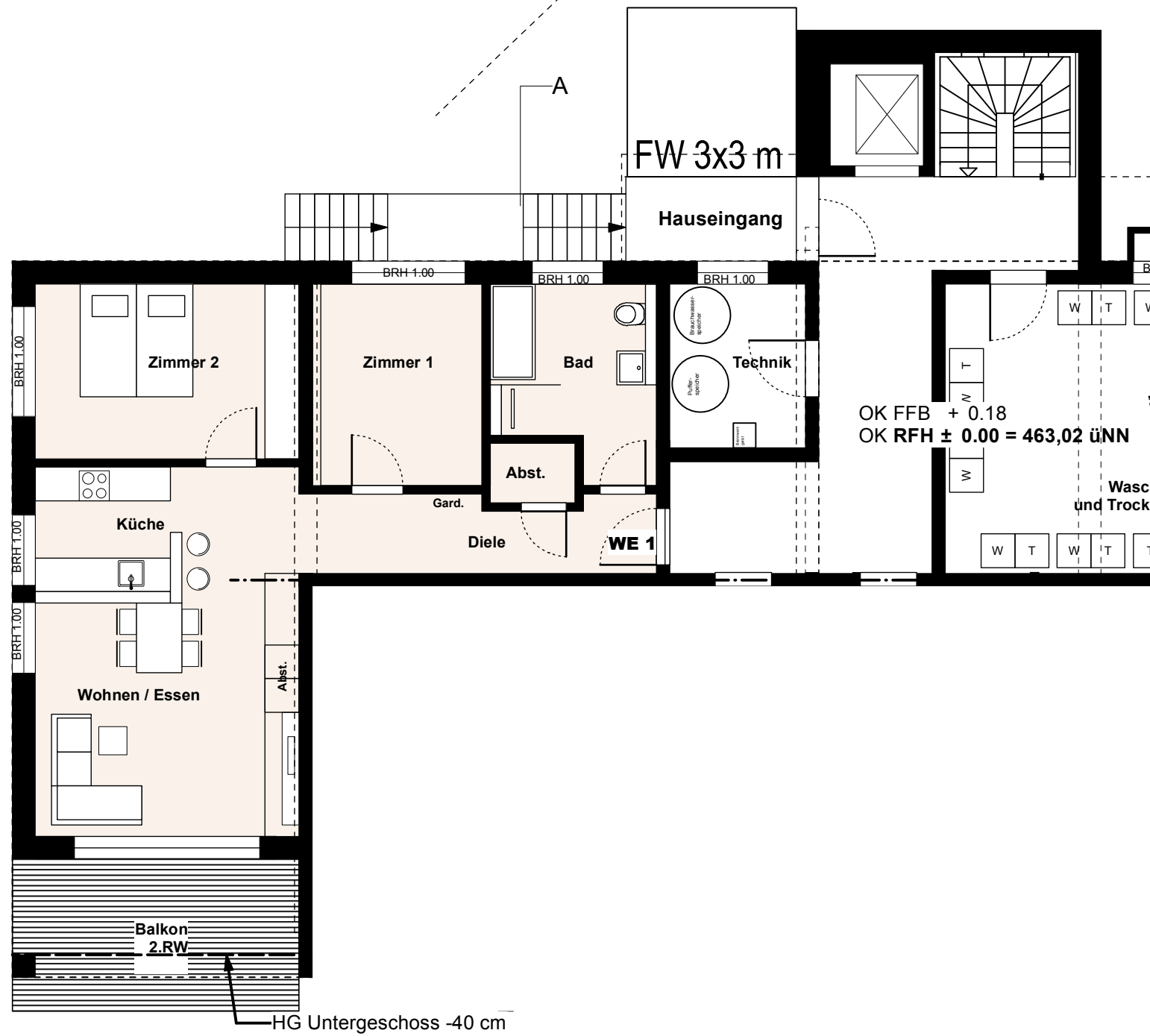
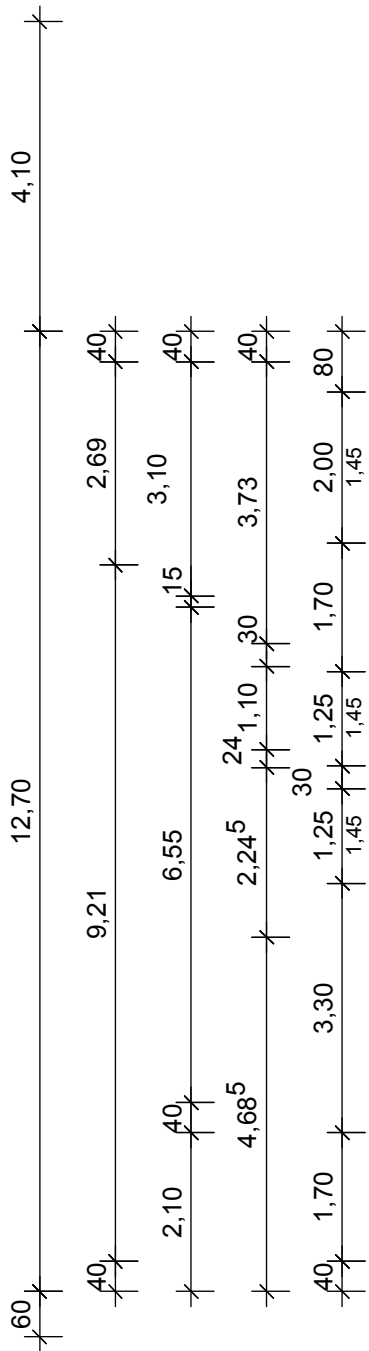
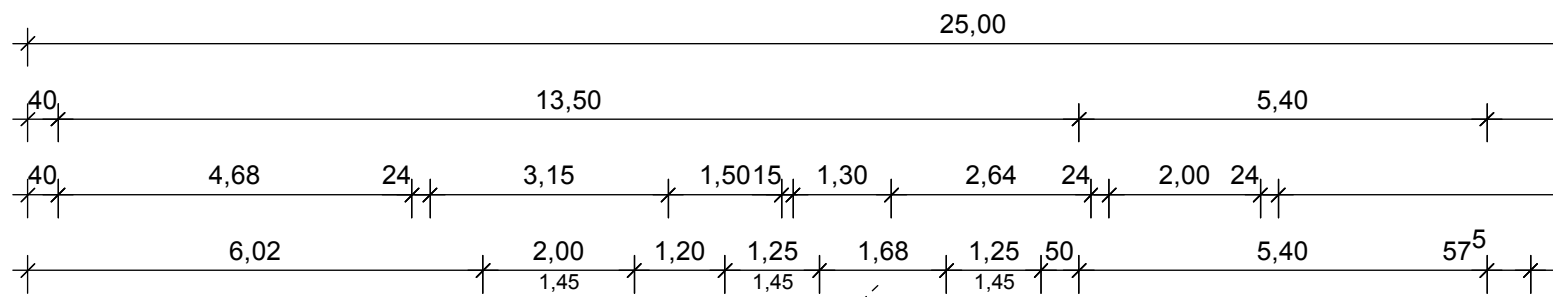
Schnitt A-A

# Erdgeschoss

## Wohnung 1

Diele	8,30 qm
Abstellraum	1,57 qm
Bad	8,76 qm
Küche	6,27 qm
Essen/Wohnen	24,39 qm
Zimmer 1	10,74 qm
Zimmer 2	14,51 qm
Balkon (13,32 qm zur Hälfte)	6,66 qm

**SUMME 81,20 qm**



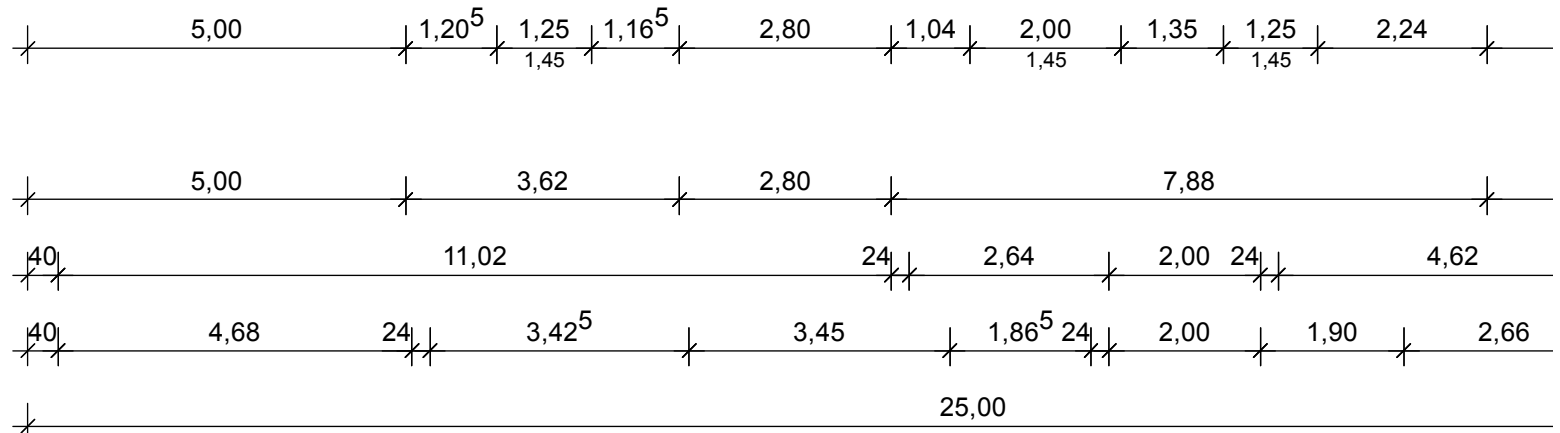
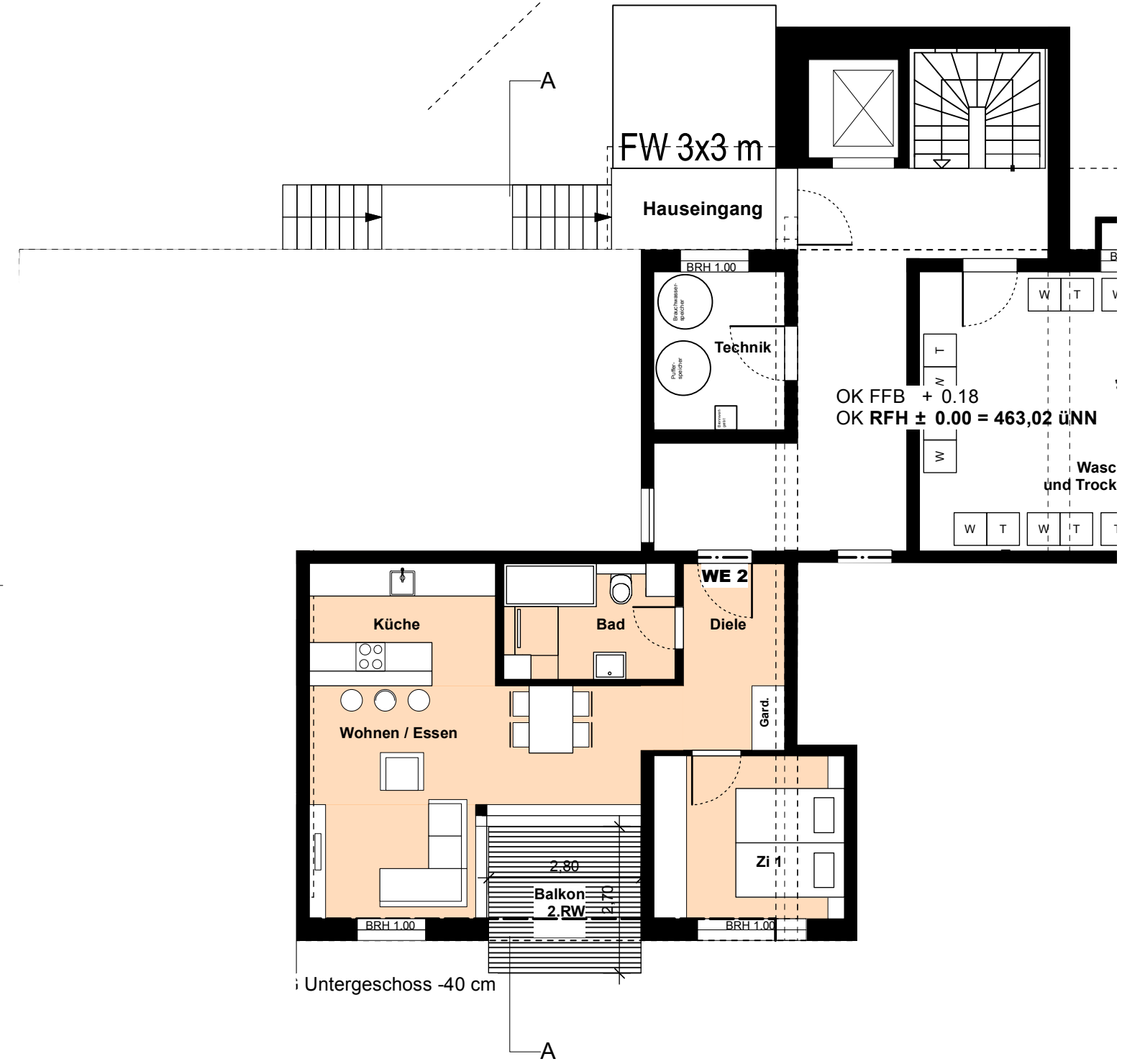
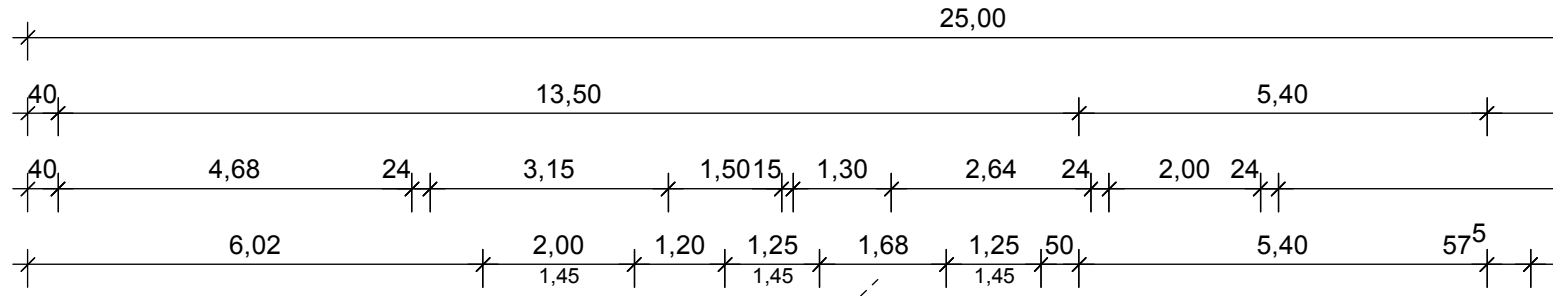
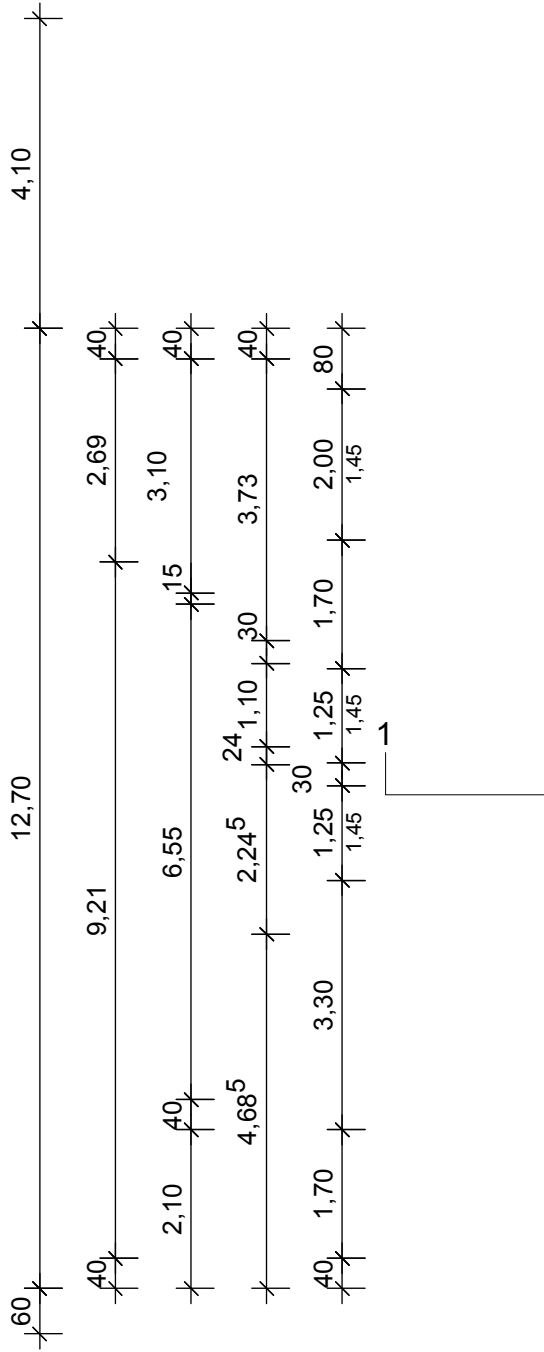


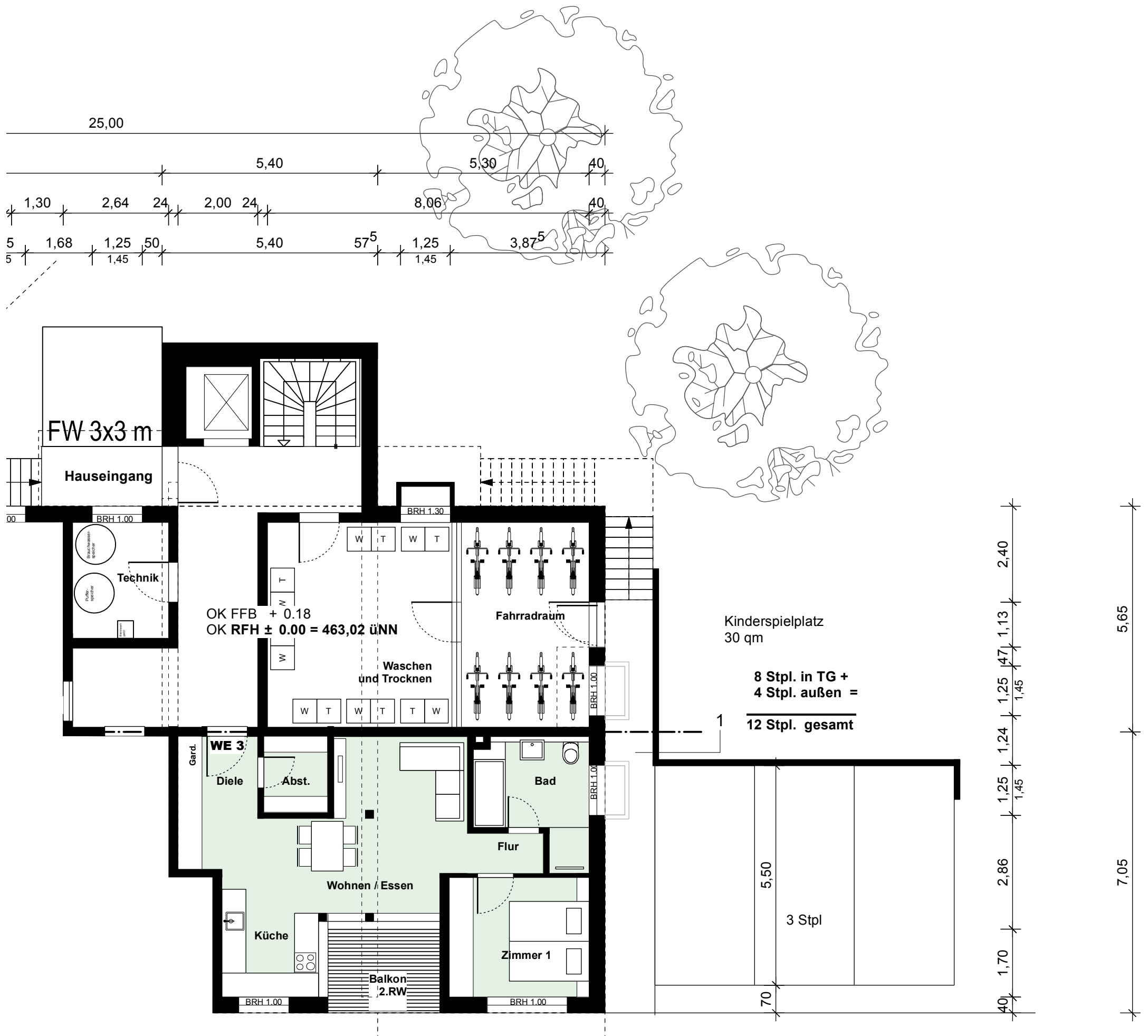
# Erdgeschoss

## Wohnung 2

Diele	7,32 qm
Bad	6,41 qm
Küche	7,72 qm
Essen/Wohnen	19,76 qm
Zimmer 1	10,50 qm
Balkon (7,56 qm zur Hälfte)	3,78 qm

**SUMME 55,49 qm**





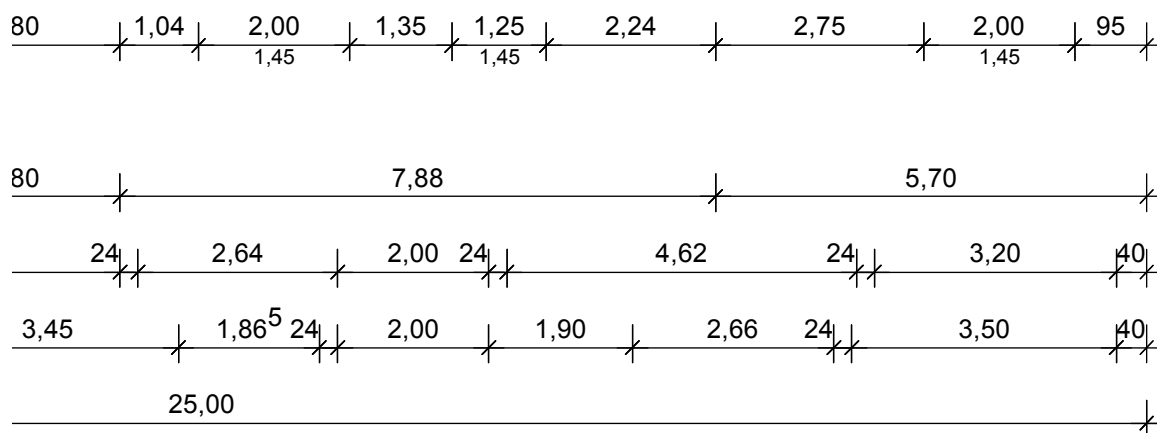
## Erdgeschoss

### Wohnung 3

Diele	4,10 qm
Flur	1,90 qm
Abstellraum	3,04 qm
Bad	7,36 qm
Küche	7,74 qm
Essen/Wohnen	19,56 qm
Zimmer 1	10,50 qm

Balkon (5,88 qm zur Hälfte) 2,94 qm

**SUMME 57,14 qm**



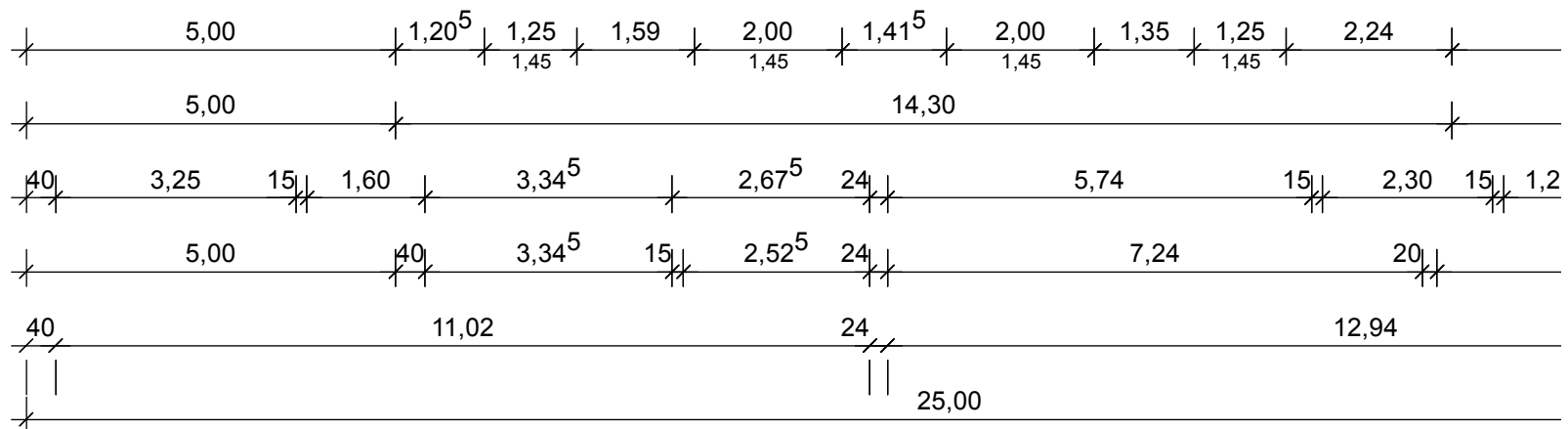
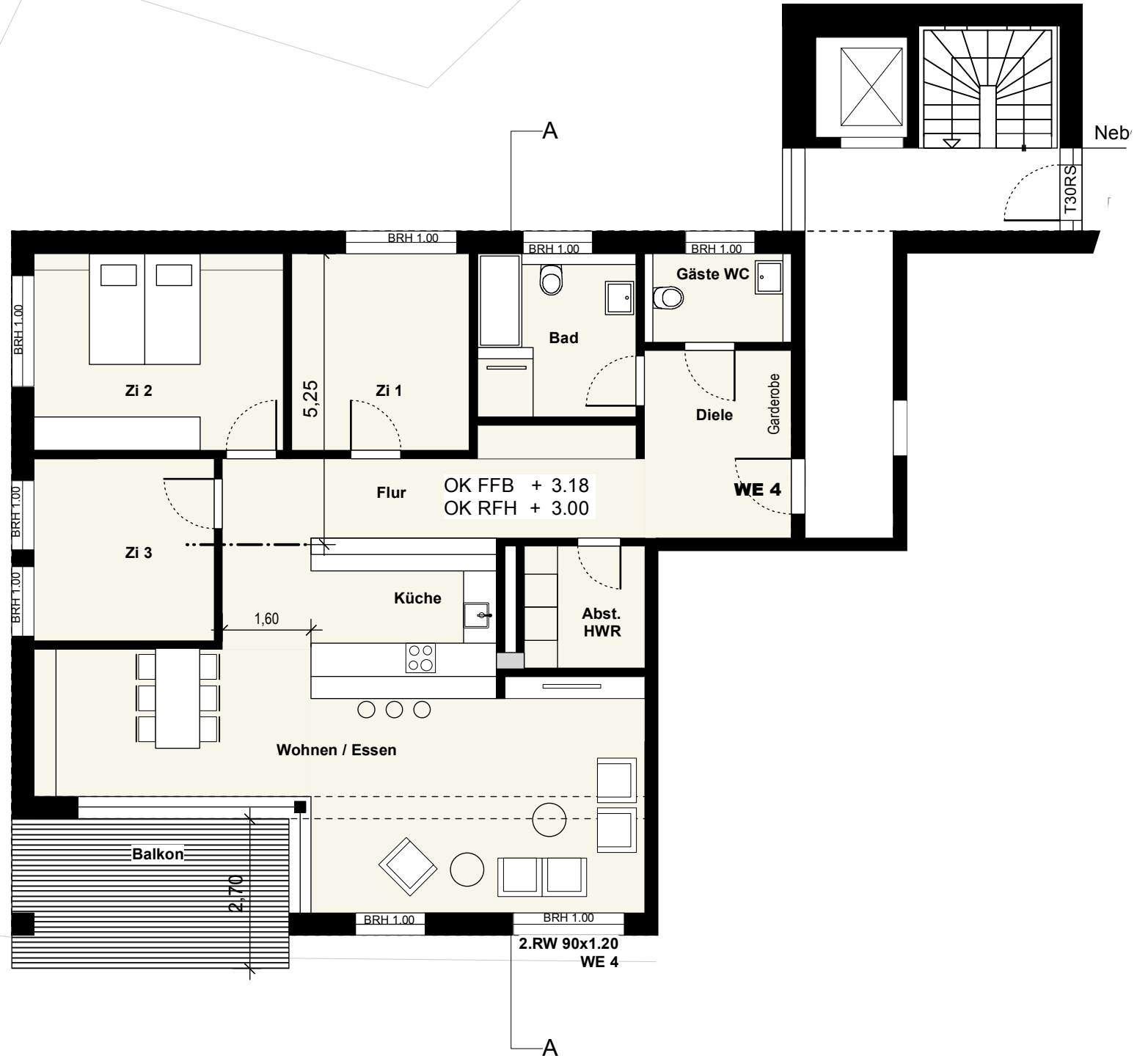
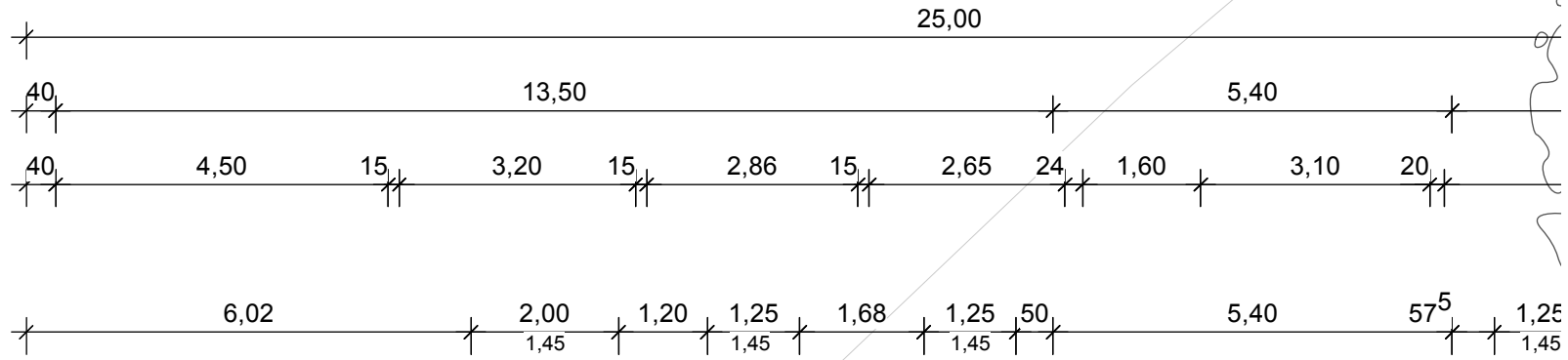
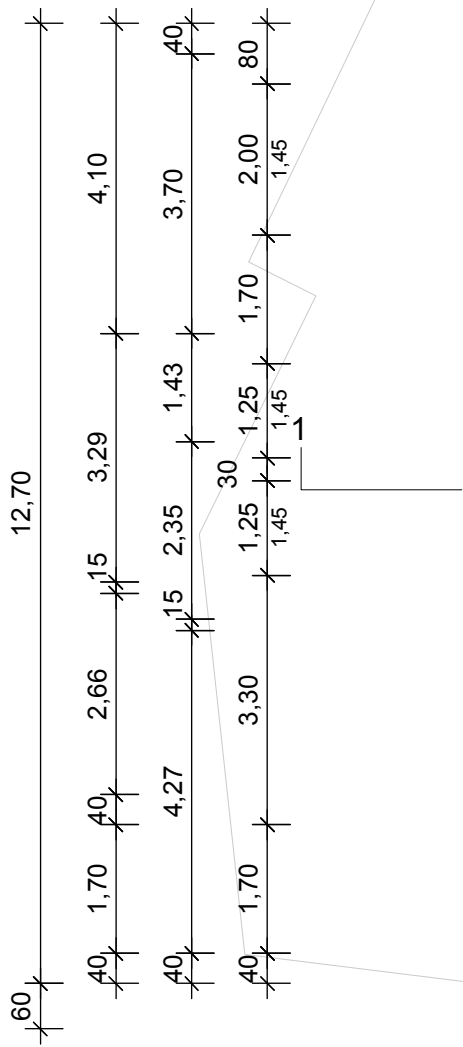
# 1. Obergeschoss

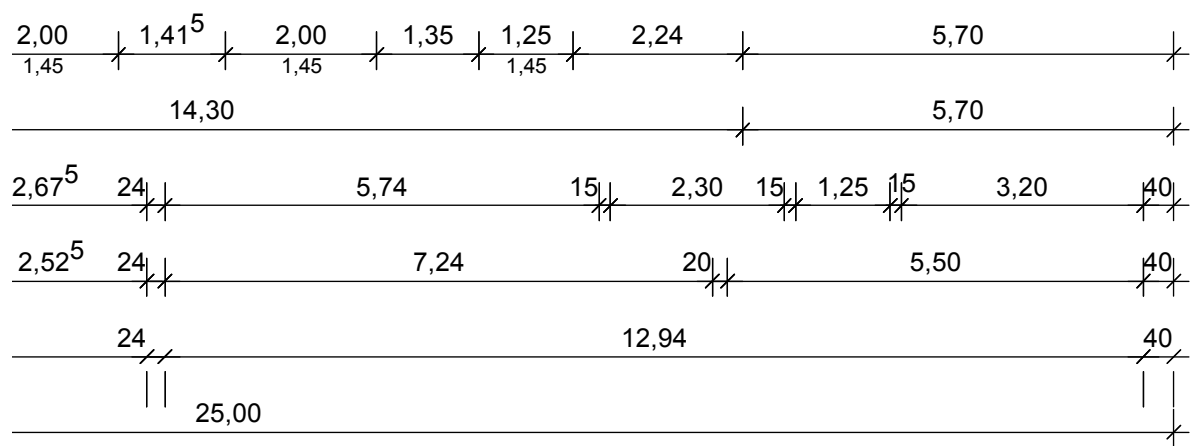
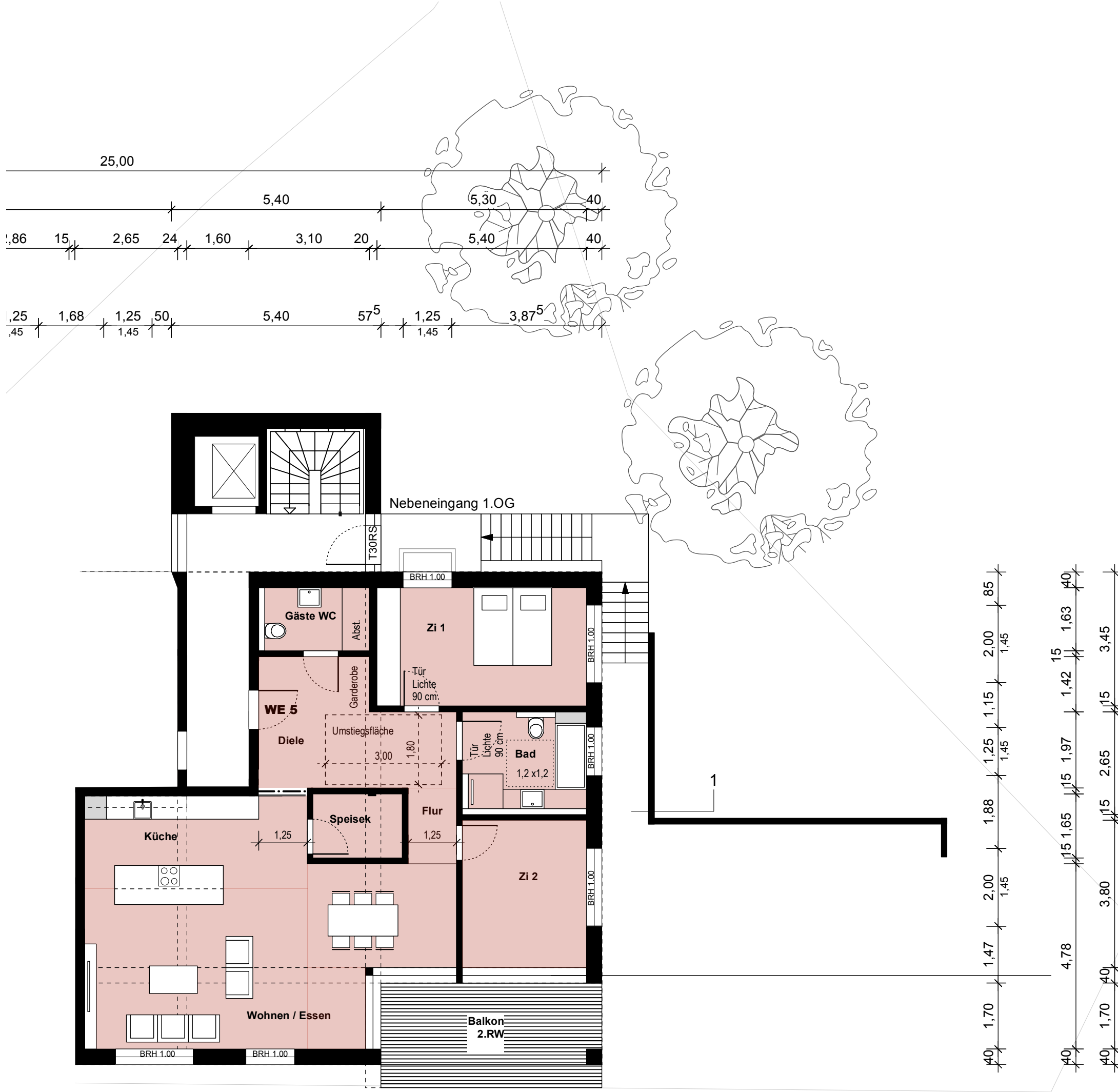
## Wohnung 4

Diele	8,96 qm
Abstellraum	4,79 qm
Flur	12,58 qm
Bad	8,14 qm
Gäste WC	4,04 qm
Küche	11,58 qm
Essen/Wohnen	39,00 qm
Zimmer 1	11,36 qm
Zimmer 2	15,98 qm
Zimmer 3	10,73 qm

Balkon (13,32 qm zur Hälfte) 6,66 qm

**SUMME 133,82 qm**





Wohnungen 5 und 7 im 1./ 2.OG barrierefrei,  
erreichbar über Aufzug und Zugang im UG

## 1. Obergeschoss

### Wohnung 5

Diele	14,08 qm
Speisekammer	3,80 qm
Flur	2,44 qm
Bad	8,08 qm
Gäste WC	4,45 qm
Küche	13,58 qm
Essen/Wohnen	37,17 qm
Zimmer 1	16,47 qm
Zimmer 2	12,16 qm

Balkon (15,10 qm zur Hälfte) 7,55 qm

**SUMME 119,88 qm**

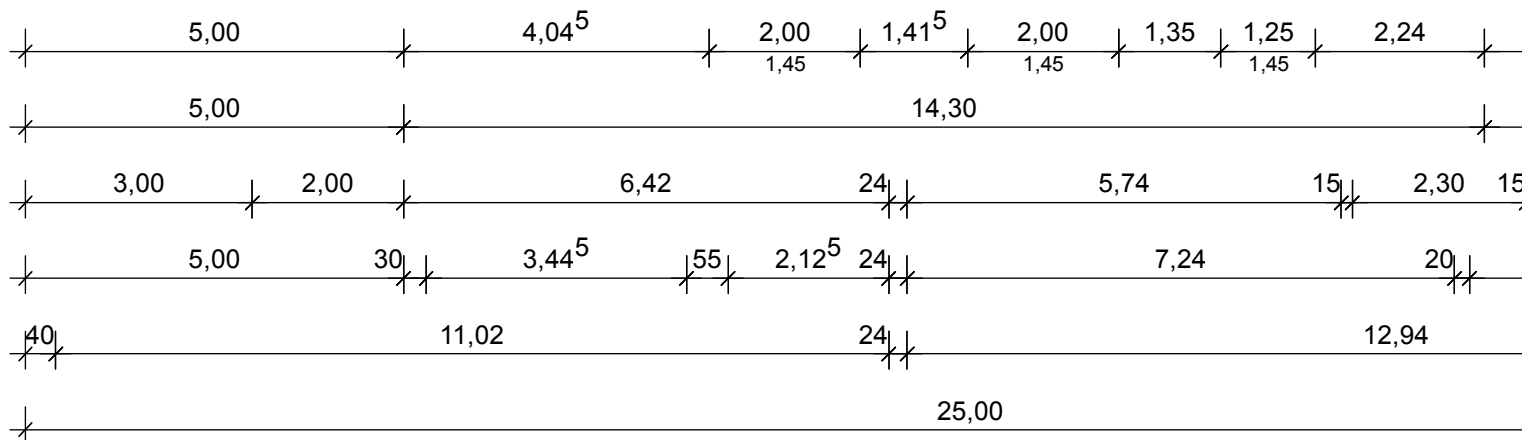
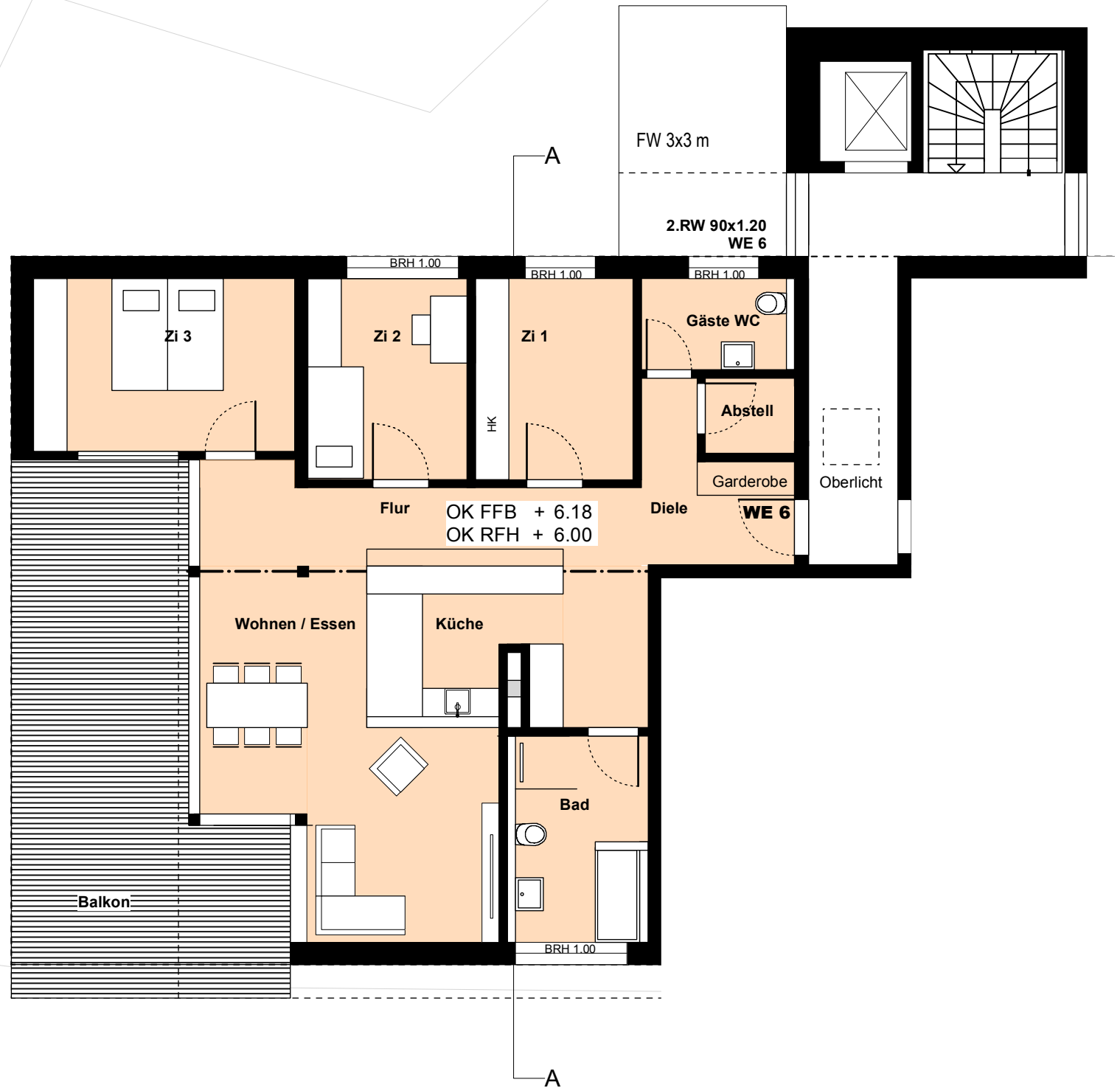
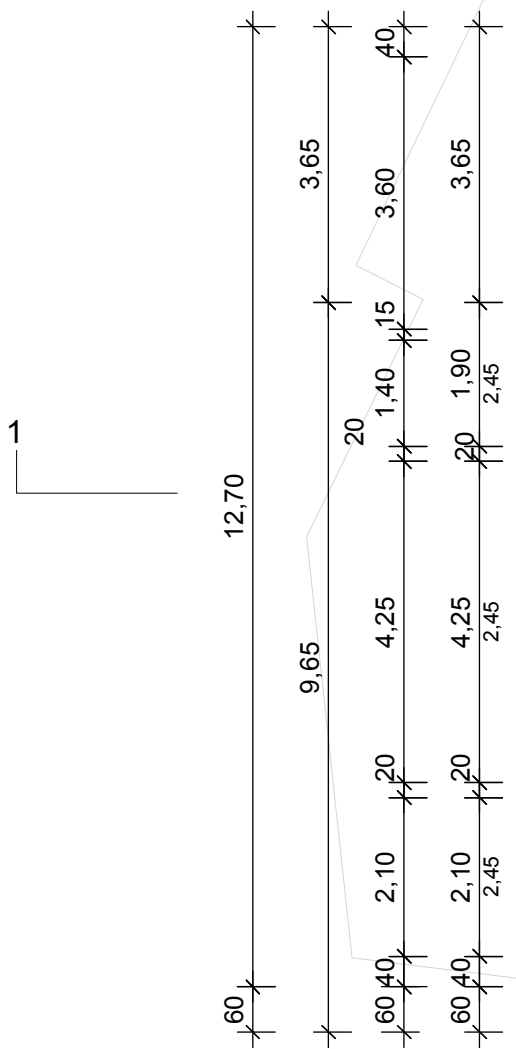
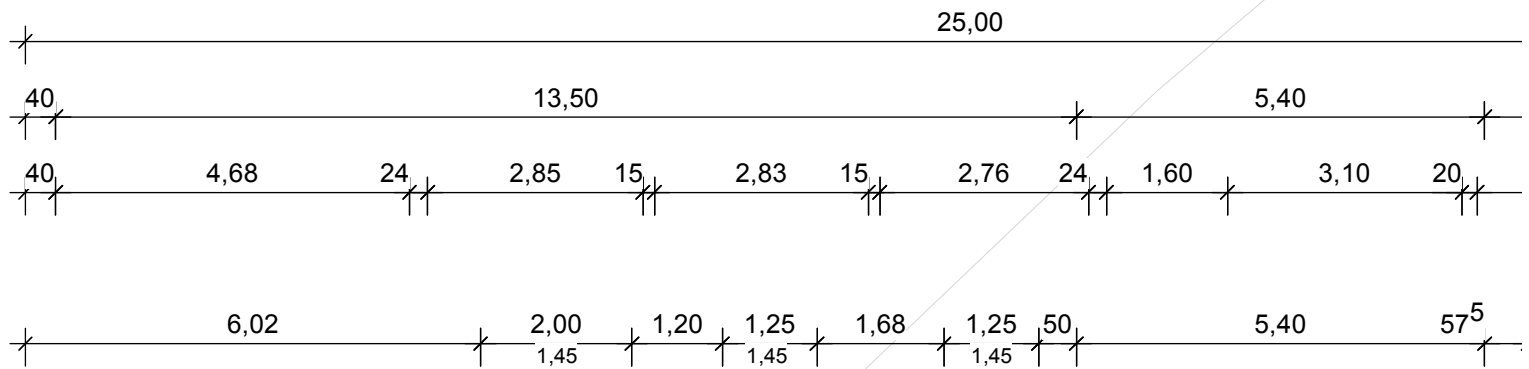
## 2. Obergeschoss

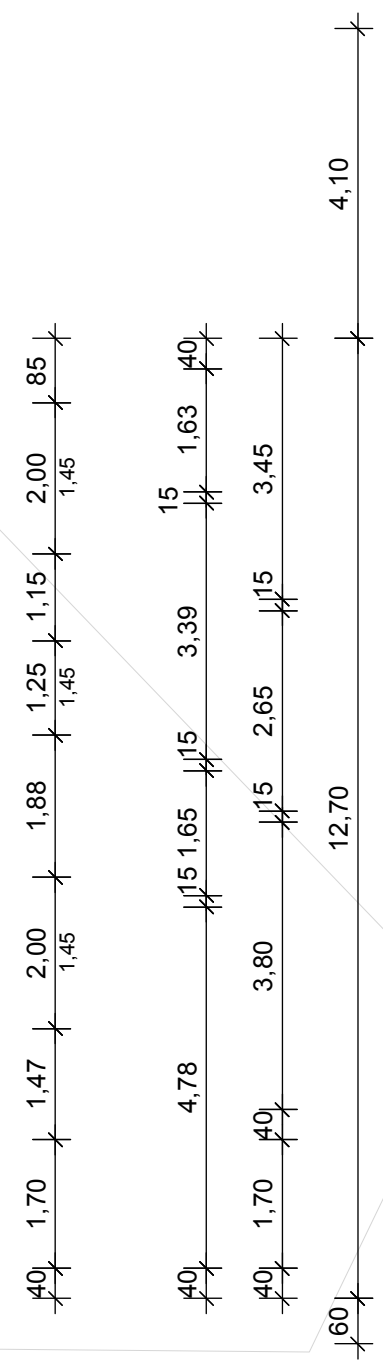
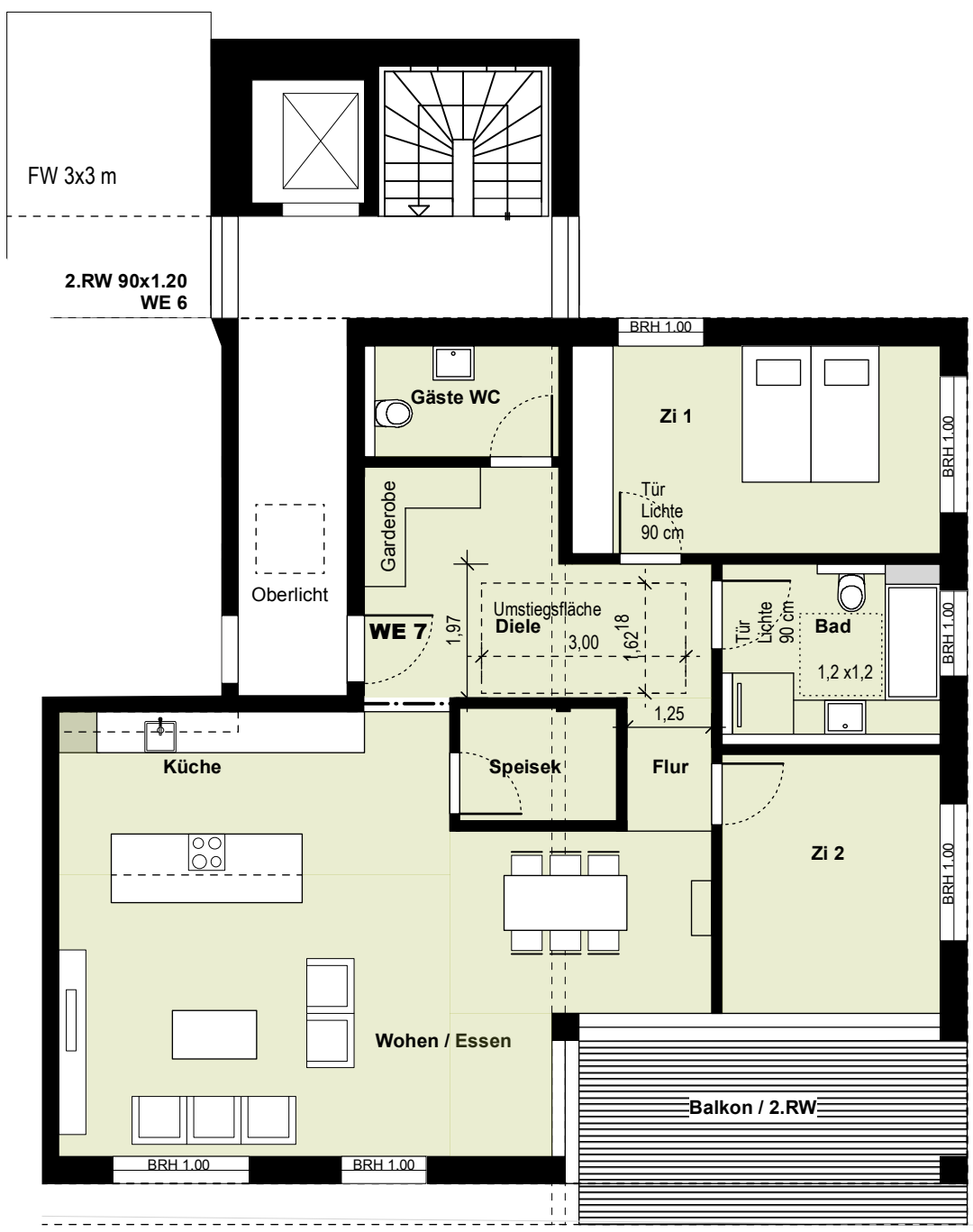
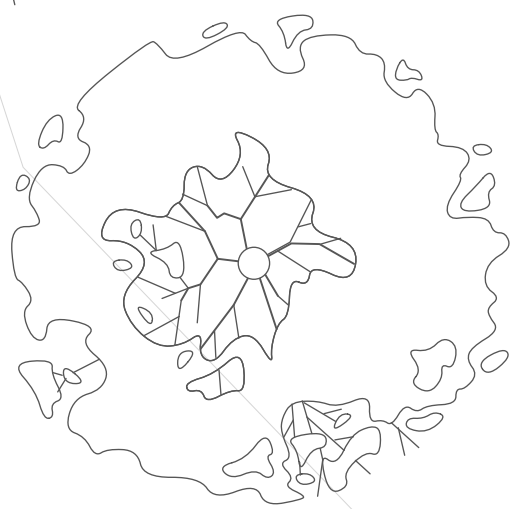
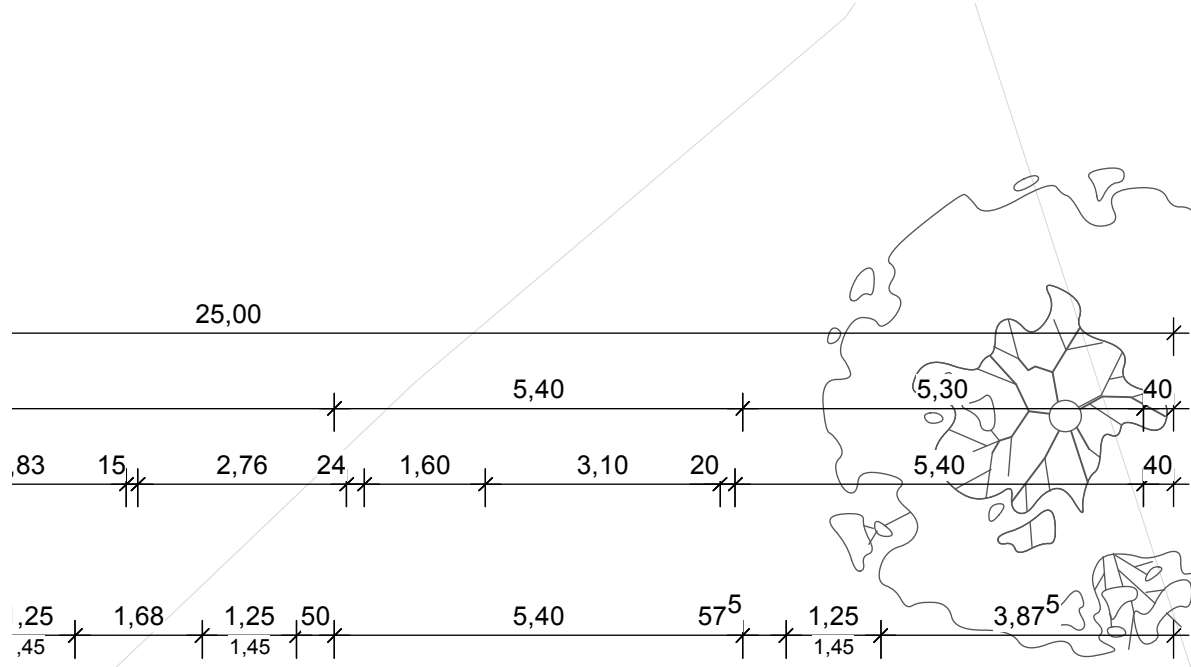
### Wohnung 6

Diele	11,90 qm
Abstellraum	2,16 qm
Flur	11,93 qm
Bad	9,14 qm
Gäste WC	4,49 qm
Küche	8,47 qm
Essen/Wohnen	24,95 qm
Zimmer 1	10,19 qm
Zimmer 2	10,26 qm
Zimmer 3	14,51 qm

Balkon (35,83 qm zur Hälfte) 17,92 qm

**SUMME 125,92 qm**





Wohnungen 5 und 7 im 1./ 2.OG barrierefrei,  
erreichbar über Aufzug und Zugang im UG

## 2. Obergeschoss

### Wohnung 7

Diele	14,08 qm
Speisekammer	3,80 qm
Flur	2,44 qm
Bad	8,08 qm
Gäste WC	4,45 qm
Küche	13,58 qm
Essen/Wohnen	37,17 qm
Zimmer 1	16,47 qm
Zimmer 2	12,16 qm

Balkon (15,10 qm zur Hälfte) 7,55 qm

**SUMME 119,88 qm**

