




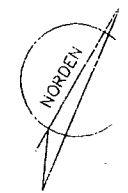
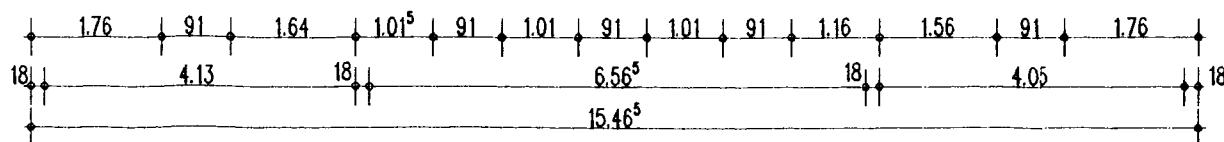
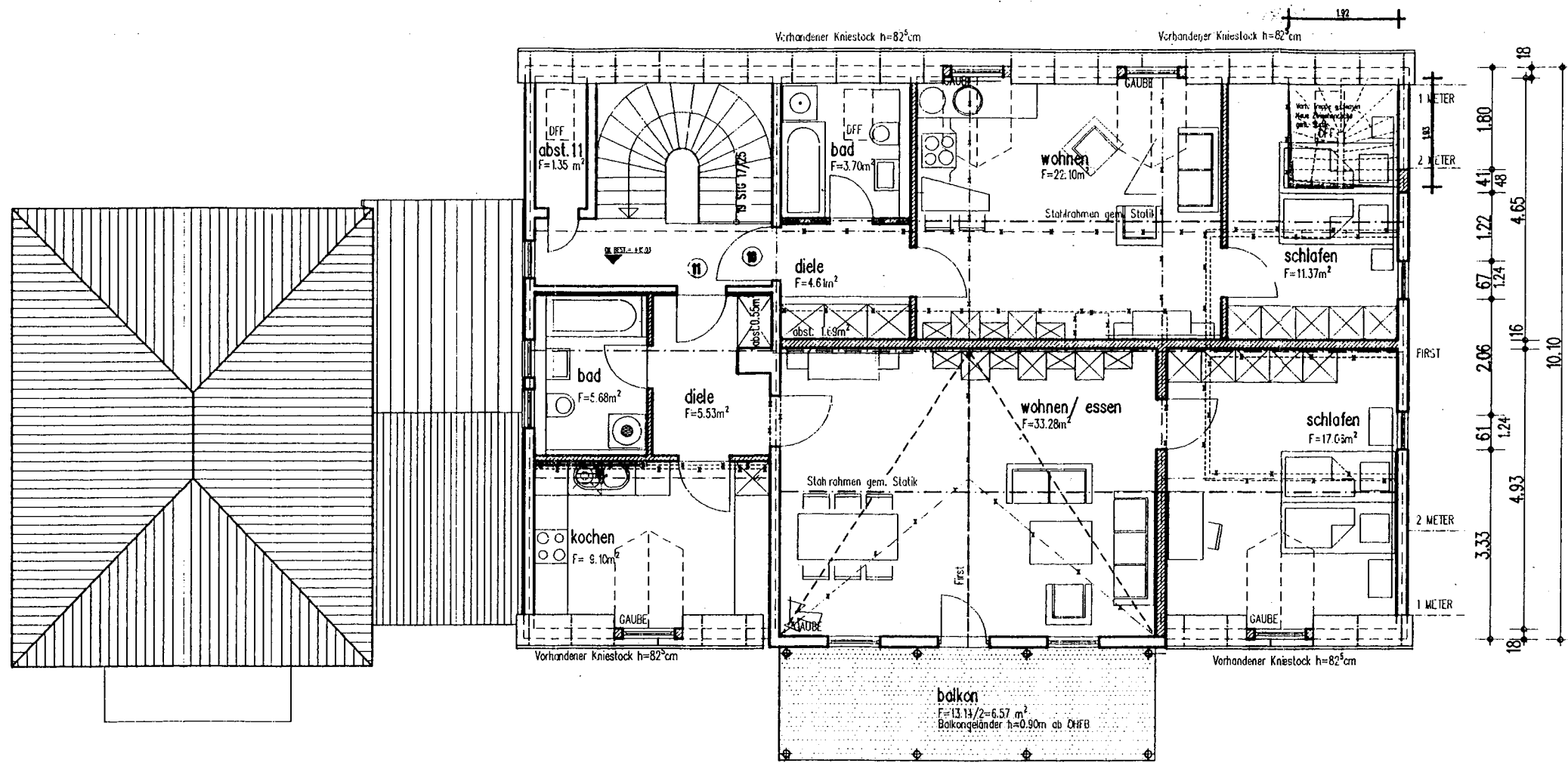
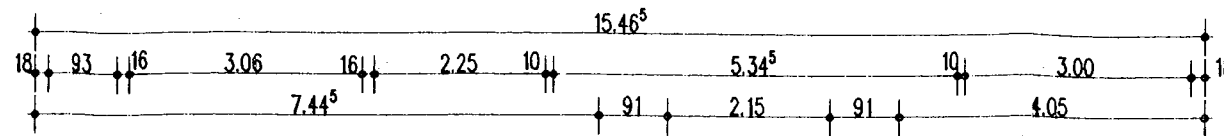
### Wohnflächen im Dachgeschoß

Wohnung 10	wohnen / kochen	22.10 m <sup>2</sup>
	schlafen	11.37 m <sup>2</sup>
	diele	4.61 m <sup>2</sup>
	bad	3.70 m <sup>2</sup>
	diele	3.71 m <sup>2</sup>
Summe Wohnung 10		41.78 m <sup>2</sup>

Wohnung 11	wohnen / essen	33.28 m <sup>2</sup>
	kochen	9.10 m <sup>2</sup>
	schlafen	17.06 m <sup>2</sup>
	diele	5.53 m <sup>2</sup>
	bad	5.68 m <sup>2</sup>
	abst.	1.35 m <sup>2</sup>
Zwischensumme		72.00 m <sup>2</sup>
balkon		6.57 m <sup>2</sup>
Summe Wohnung 11		78.57 m <sup>2</sup>

### LEGENDE

-  Bestehende Bauteile
-  Abzureißende Bauteile
-  Neue Bauteile



SCHÖNE ALLEE 13  
 GOTHIA  
 1: 100  
 DACHGESCHOSS  
 NORBERT CONRAD  
 ARCHITEKT TEL. 0631/93090  
 BISMARCKSTRASSE 62  
 67655 KAISERSLAUTERN  
 KL. 10. 12. 96