

FRST
S17,00m 0 NN

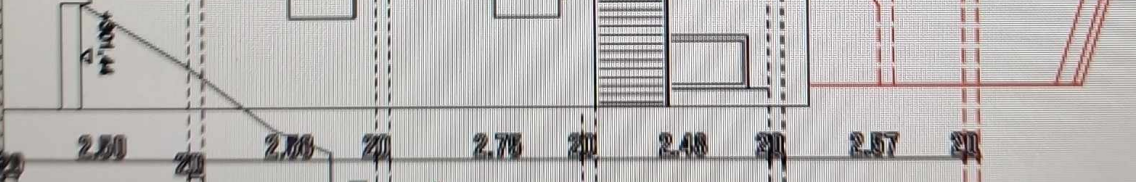
GRUNDE

SUDEN

TRULUF
S18,00m 0 NN

H ca. 5,65m

H 3,50m



FRST
+11,10
5

DG 2
+8,40
7

DG 1
+5,63
7

OG
+2,95
7

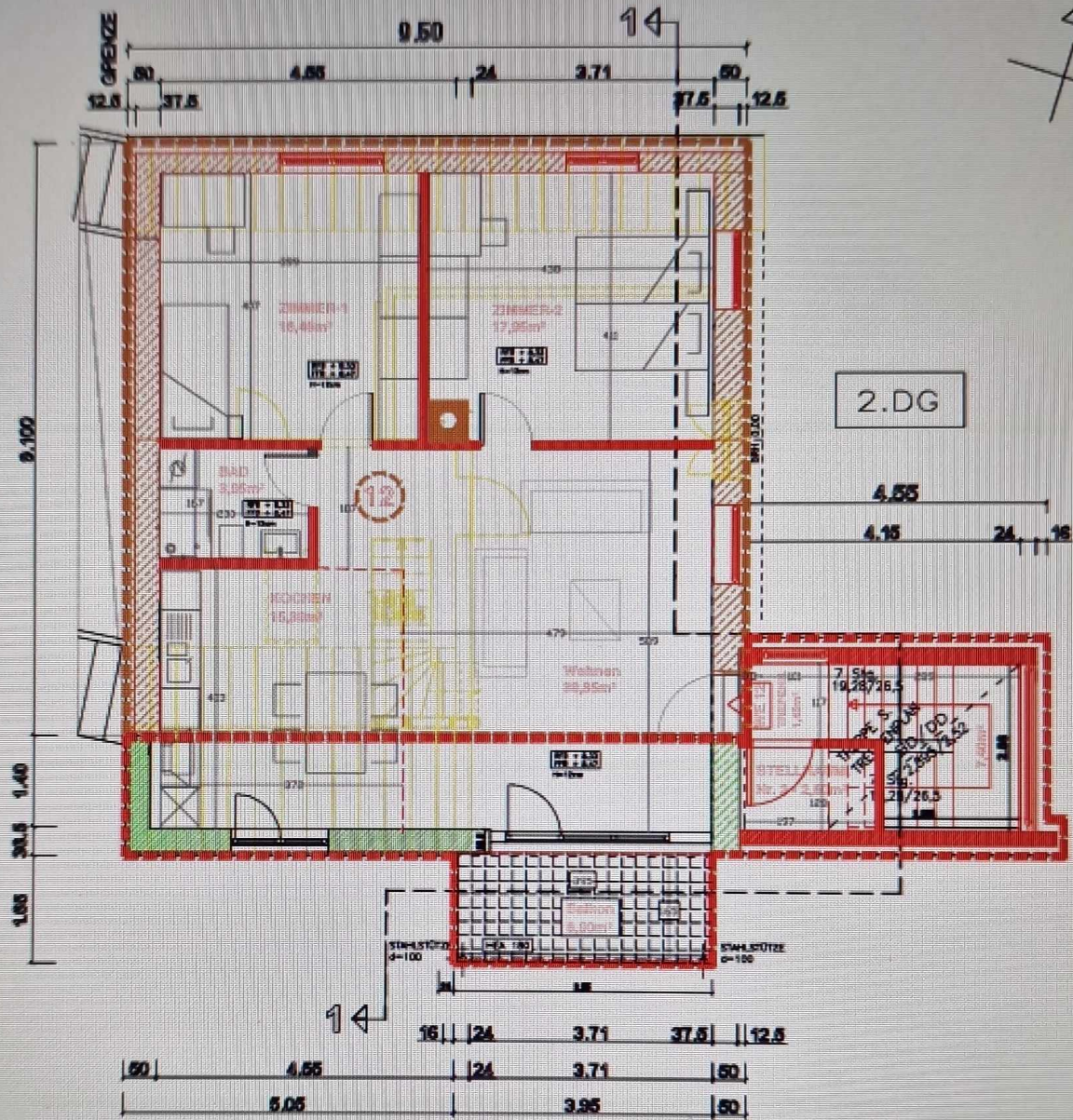
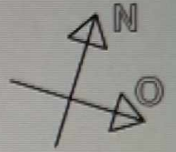
EG
-305,80m NN
20,00
RÖTTERSTR
305,00m NN

UG
2,70

UG 2
-5,40

WOHNFLÄCHE:
WE - 11 = 87,05 mq

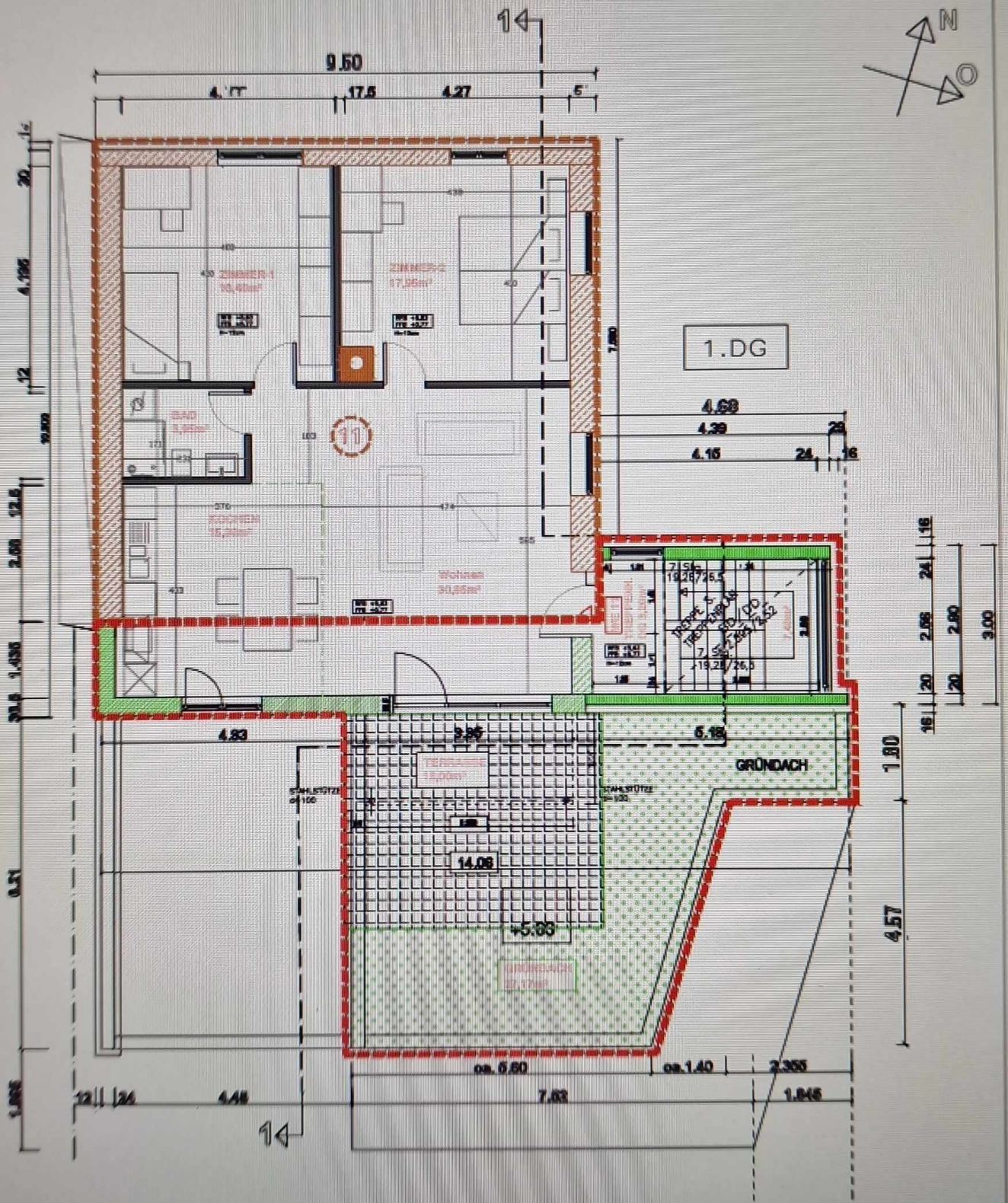
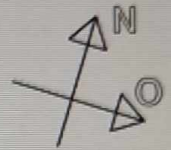
----- BESTAND
- - - - - ANBAU



WOHNFLÄCHE:
WE - 11 = 90,65 m²

----- BESTAND

----- ANBAU

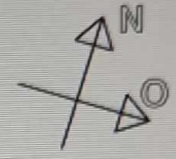


WOHNFLÄCHE:

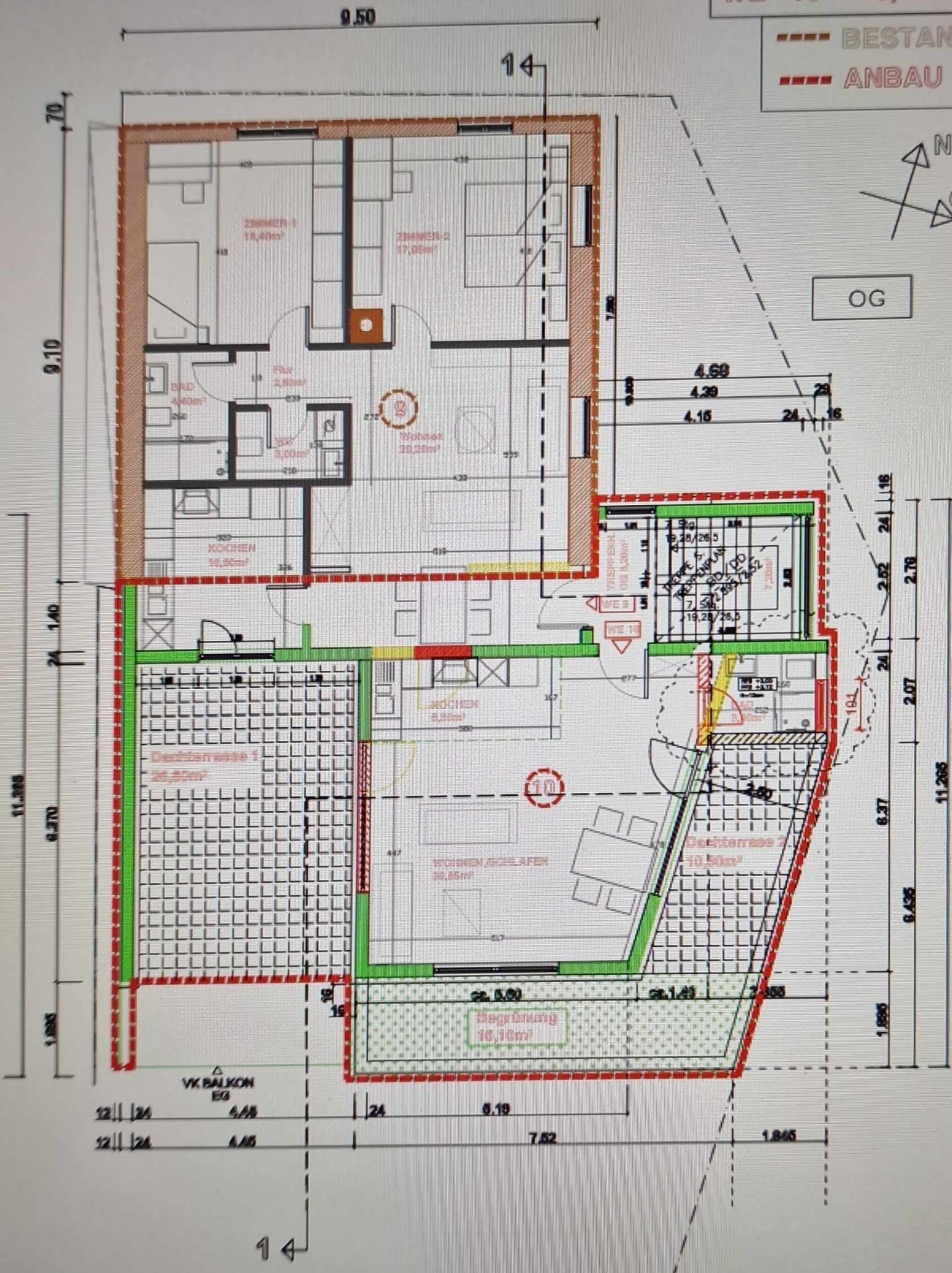
WE - 9 = 97,45 m²

WE - 10 = 45,70 m²

----- BESTAND
----- ANBAU



OG



WOHNFLÄCHE:

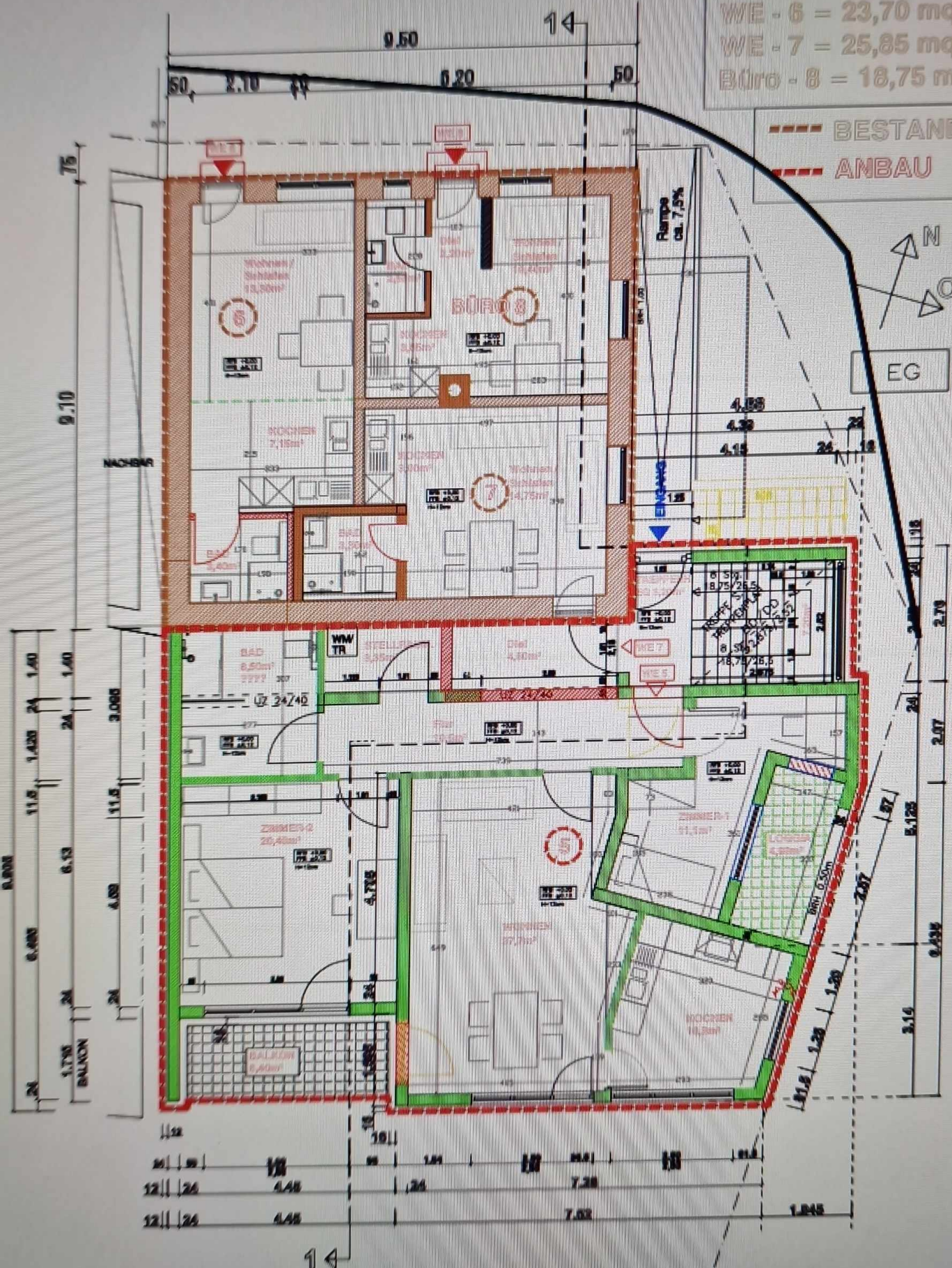
WE - 5 = 97,25 m²

WE - 6 = 23,70 m²

WE - 7 = 25,85 m²

Büro - 8 = 18,75 m²

----- BESTAND
 - - - - - ANBAU

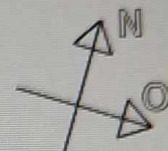


WOHNFLÄCHE:

WE - 3 = 46,57 mq

WE - 4 = 71,60 mq

----- BESTAND
 - - - - - ANBAU



1. UG



WOHNFLÄCHE:
 WE - 1 = 40,28 mq
 WE - 2 = 64,43 mq

--- BESTAND
 - - - ANBAU



2.UG

