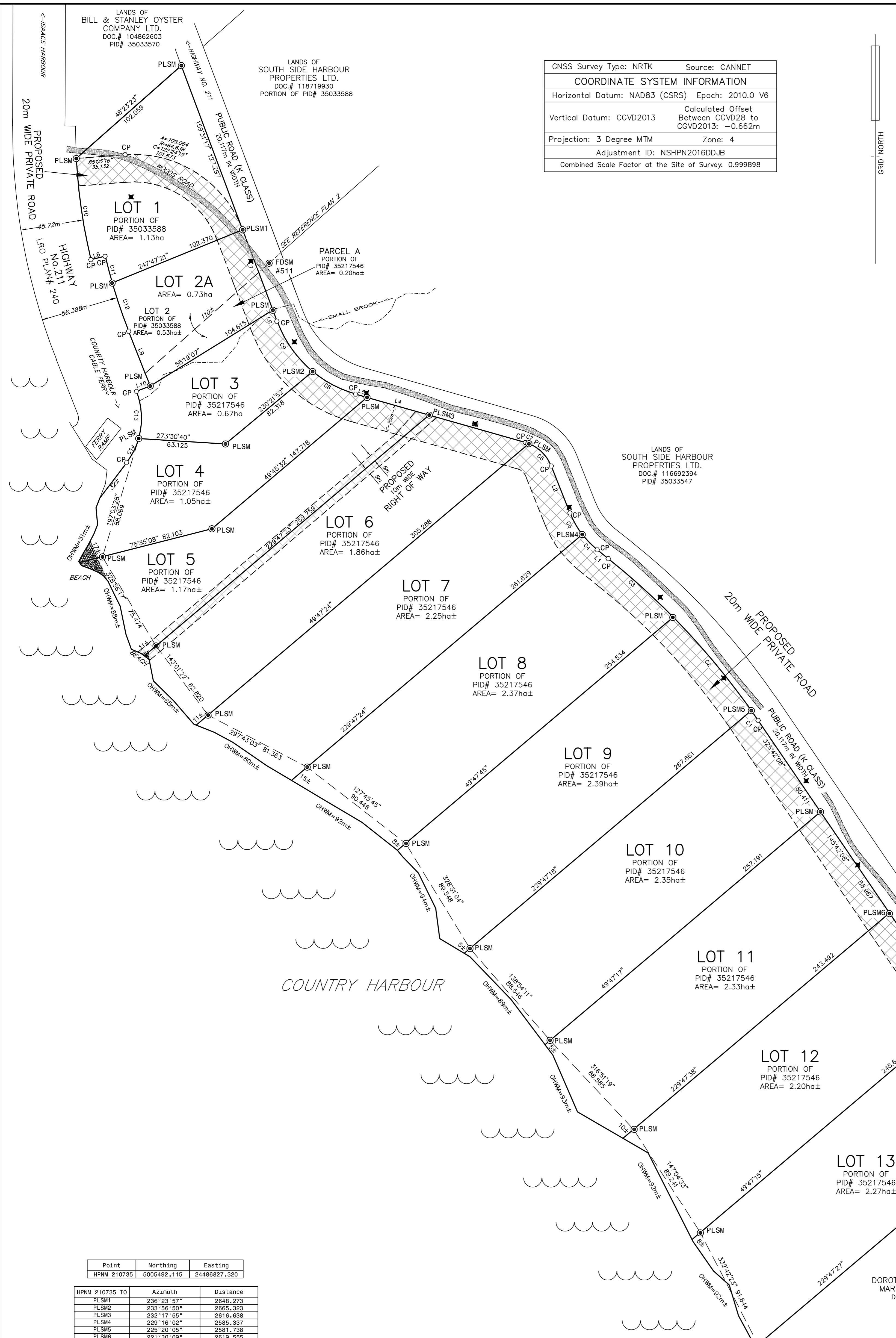
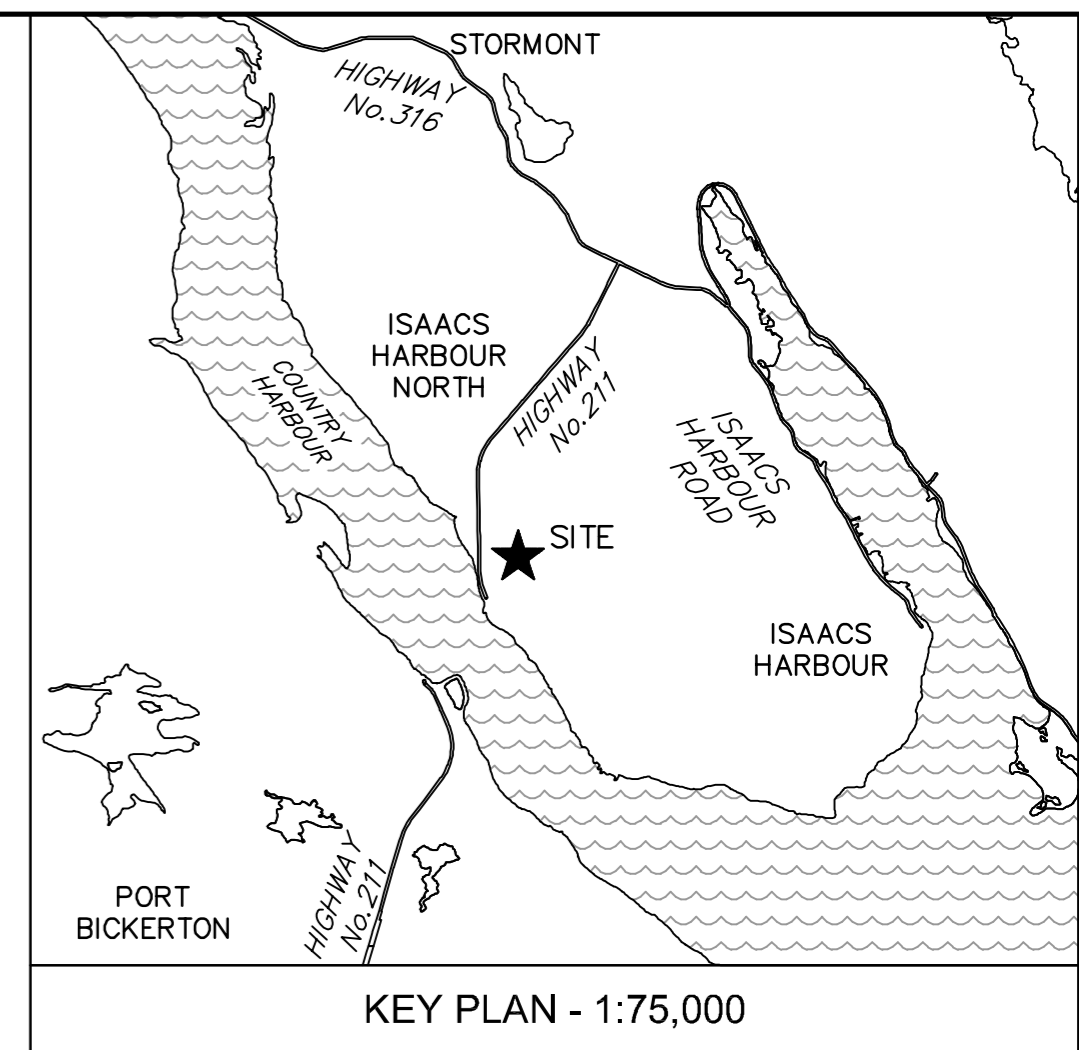


GNSS Survey Type: NRTK	Source: CANNET
COORDINATE SYSTEM INFORMATION	
Horizontal Datum: NAD83 (CSRS) Epoch: 2010.0 V6	
Vertical Datum: CGVD2013	Calculated Offset Between CGVD28 to CGVD2013: -0.662m
Projection: 3 Degree MTM	Zone: 4
Adjustment ID: NSHPN2016DDJB	
Combined Scale Factor at the Site of Survey: 0.999898	



LEGEND:

1) ALL AZIMUTHS WERE DETERMINED USING GPS TECHNOLOGY, REFERENCED TO THE NOVA SCOTIA HIGH PRECISION NETWORK AND ARE REFERENCED TO THE NOVA SCOTIA 3° MODIFIED TRANSVERSE MERCATOR PROJECTION, ZONE 4, CENTRAL MERIDIAN 61° 30' WEST LONGITUDE, NAD83 (CSRS), EPOCH 2010.0V6.
2) ALL DISTANCES SHOWN ARE GRID DISTANCES UNLESS OTHERWISE NOTED.

SURVEY MARKER	SM	●
HIGH PRECISION NETWORK MONUMENT	HPNM	△
IRON BAR	IB	○
POINT OF CURVATURE, CALCULATED POINT	PC, CP	○
POWER POLE	PP	•
RADIUS, ARC, CHORD	R.A.C	•
PLACED, FOUND	PL, FD	•
CALCULATED	(c)	•
PARCEL IDENTIFYING NUMBER, DOCUMENT NUMBER	PID#, DOC.#	
REGISTRY BOOK AND PAGE REFERENCE	0000000	
ORDINARY HIGH WATER MARK	OHWM	—
TIE LINE	—	—
LAND DEALT WITH BY THIS PLAN	—	—
OTHER LAND	—	—
COMMON BOUNDARY	—	—
OVERHEAD POWER LINE	P	—
LAND REGISTRY OFFICE	LRO	—
REPORTED FROM REFERENCE PLAN	(R)	—
CENTER LINE	CL	—
MUNICIPAL SEWER SERVICES	S	—
FENCE	X	—

Point	Northing	Easting
HPNM 210735	5005492.115	24486827.320

HPNM 210735 TO	Azimuth	Distance
PLSM1	236°23'57"	2648.273
PLSM2	233°16'50"	2665.323
PLSM3	232°17'55"	2616.638
PLSM4	229°16'02"	2585.337
PLSM5	225°20'05"	2581.738
PLSM6	221°30'09"	2619.555
FDSM1	217°46'59"	2869.874

Course	Arc Length	Radius	Chord Azimuth	Chord Distance
C1	8.589	539.690	325°14'47"	8.589
C2	88.579	539.690	140°05'18"	88.479
C3	63.544	539.690	312°00'48"	63.507
C4	15.528	65.097	315°28'25"	15.491
C5	18.306	65.097	150°21'51"	18.245
C6	23.588	28.802	134°57'29"	22.935
C7	2.819	28.802	288°41'09"	2.818
C8	35.617	86.609	297°44'27"	35.151
C9	45.458	86.609	144°29'05"	44.938
C10	74.054	412.715	351°47'32"	73.955
C11	20.109	402.046	345°12'55"	20.107
C12	37.001	402.046	161°08'55"	36.988
C13	35.021	53.493	357°16'03"	34.399
C14	19.787	53.493	206°37'11"	19.674

Course	Azimuth	Distance
L1	308°38'25"	10.312
L2	158°25'11"	36.525
L3	285°31'12"	72.662
L4	105°53'12"	46.827
L5	285°53'12"	8.721
L6	159°31'14"	8.528
L7	339°31'14"	62.439
L8	286°39'03"	10.668
L9	158°30'43"	42.703
L10	68°30'43"	10.668

REFERENCE PLANS:

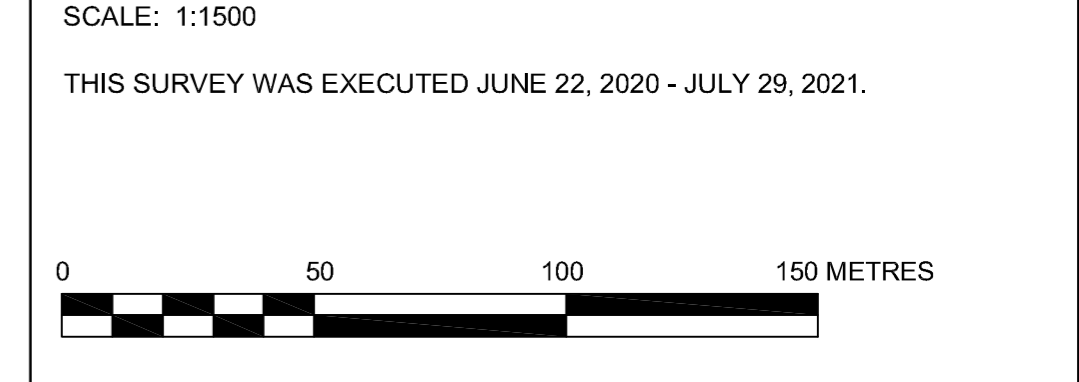
- SEE PLAN BY HJS CONSULTANTS LIMITED DATED OCTOBER 5, 2007. LRO PLAN# 89169784.
- SEE PLAN BY TAYLOR & MACKEN SURVEYS LTD. DATED APRIL 22, 1996. LRO PLAN# 1997-14.

NOTE:

- SEE LOT ASSESSMENT REPORT BY EDMAR ENGINEERING INC.
- LOT IDENTIFIERS 1,2A,3,4,5,6,7,8,9,10,11,12&13 ORIGINATE WITH THIS PLAN.
- LOT 2, A PORTION OF PID# 35033588 IS TO BE ADDED TO PARCEL A, A PORTION OF PID# 35217546 TO FORM LOT 2A.

PLAN OF SUBDIVISION AND CONSOLIDATION OF LANDS OF SOUTH SIDE HARBOUR PROPERTIES LTD. LOTS 1,2A,3,4,5,6,7,8,9,10,11,12 & 13 ISAACS HARBOUR NORTH, GUYSBOROUGH COUNTY, NOVA SCOTIA

SCALE: 1:1500
THIS SURVEY WAS EXECUTED JUNE 22, 2020 - JULY 29, 2021.



SURVEYOR'S CERTIFICATE

I, John J. DeLorey, Nova Scotia Land Surveyor, hereby certify that the survey represented by this plan was conducted under my supervision and that the survey and plan were made in accordance with the Land Surveyors Act, Regulations and Standards made thereunder.
Dated this 2nd day of August, 2021.

John J. DeLorey, N.S.L.S.

DELOREY LAND SURVEYS INC.
264 LINWOOD ROAD, ANTIGONISH CO., NOVA SCOTIA
CELL: 902-863-8767 OFFICE: 902-232-2350 FAX: 902-232-2340
EMAIL: JOHN@NSLANDSURVEY.CA
WEBSITE: WWW.NSLANDSURVEY.CA

