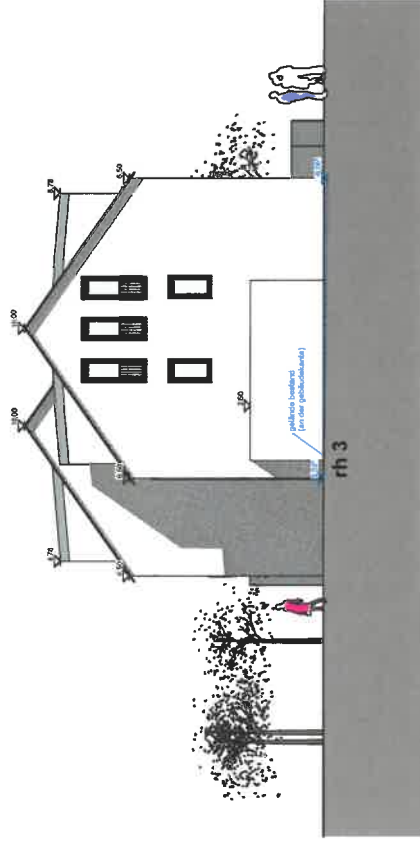
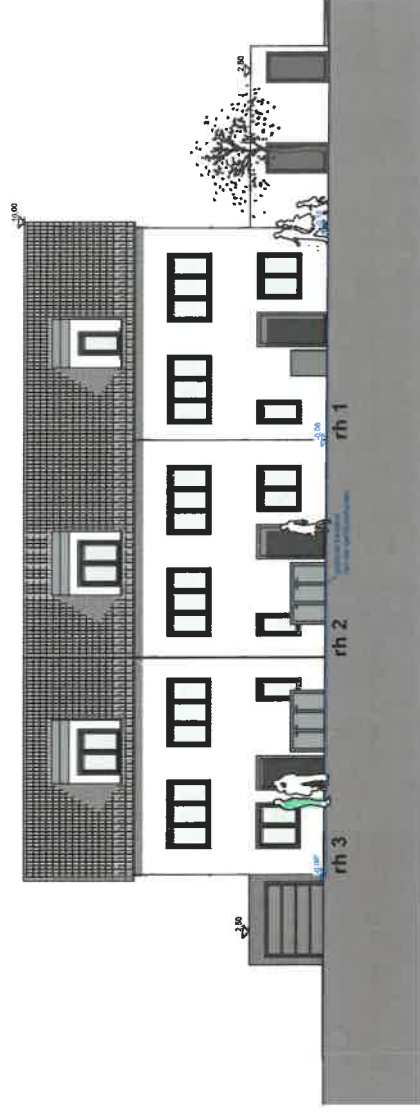


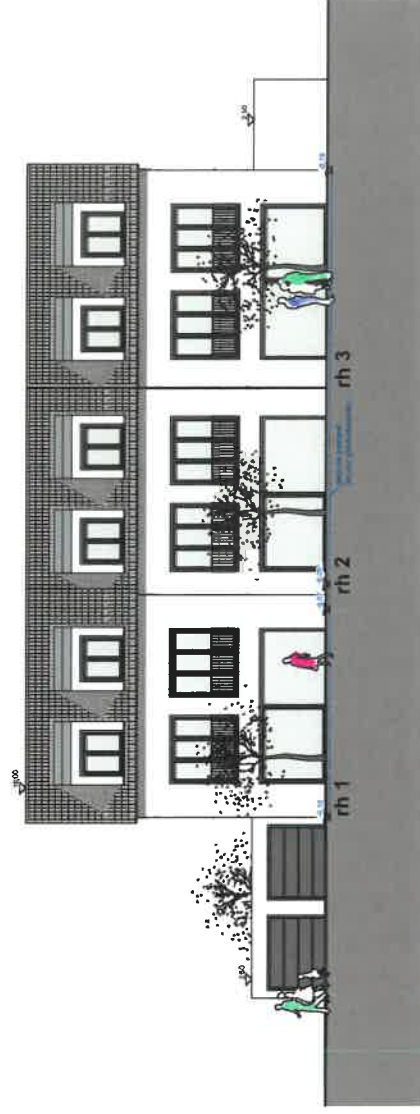
ansicht von nord



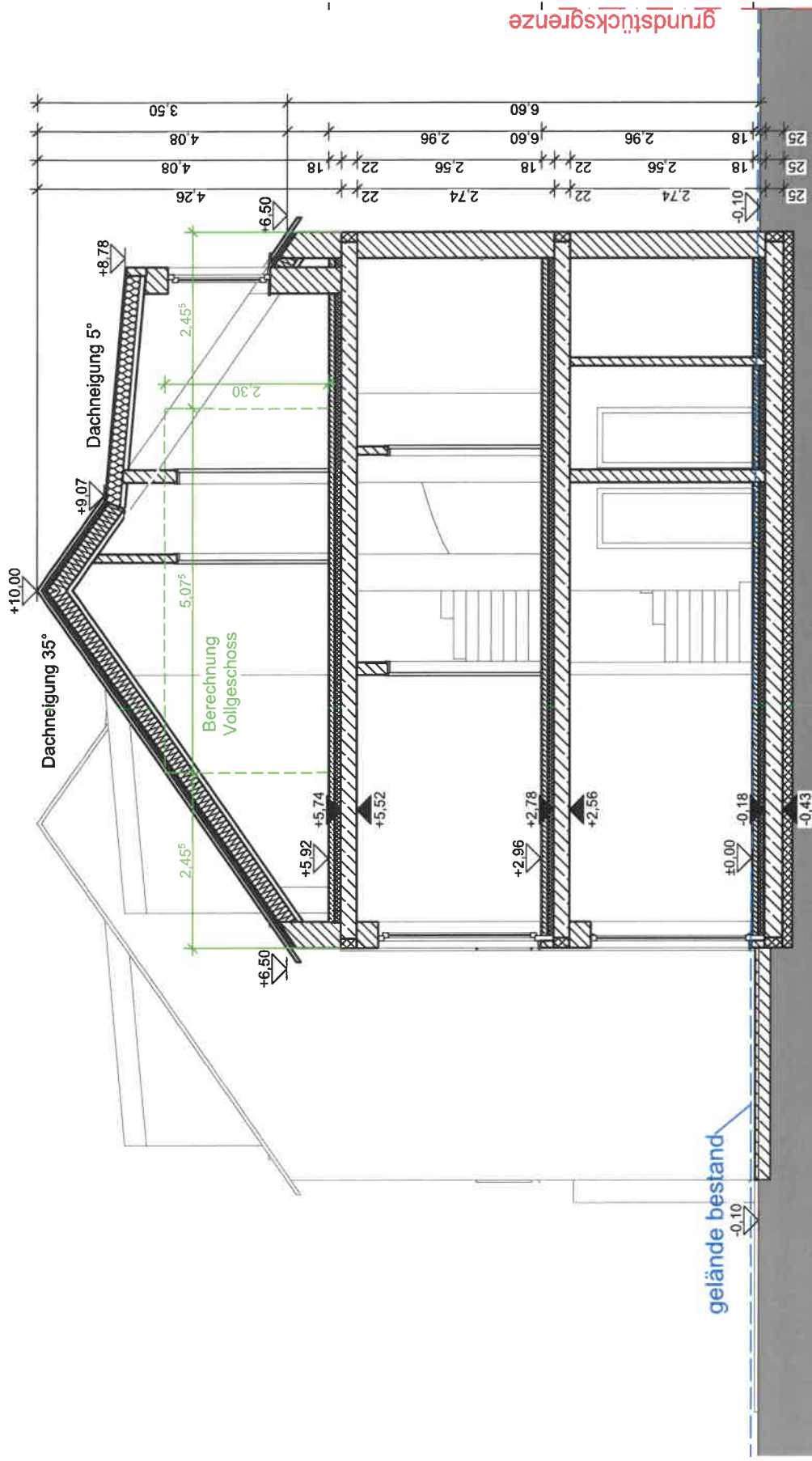
ansicht von süd



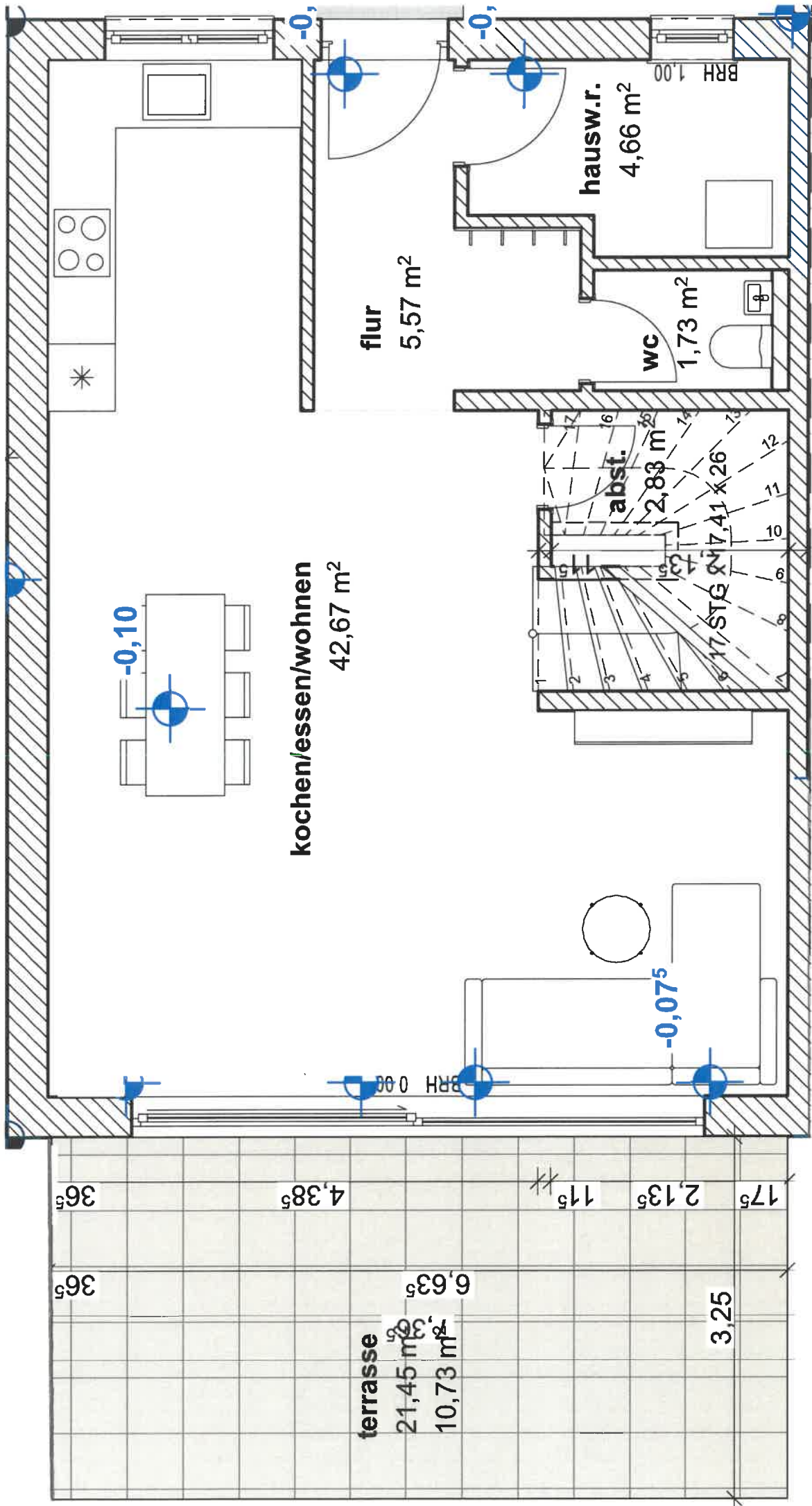
ansicht von ost

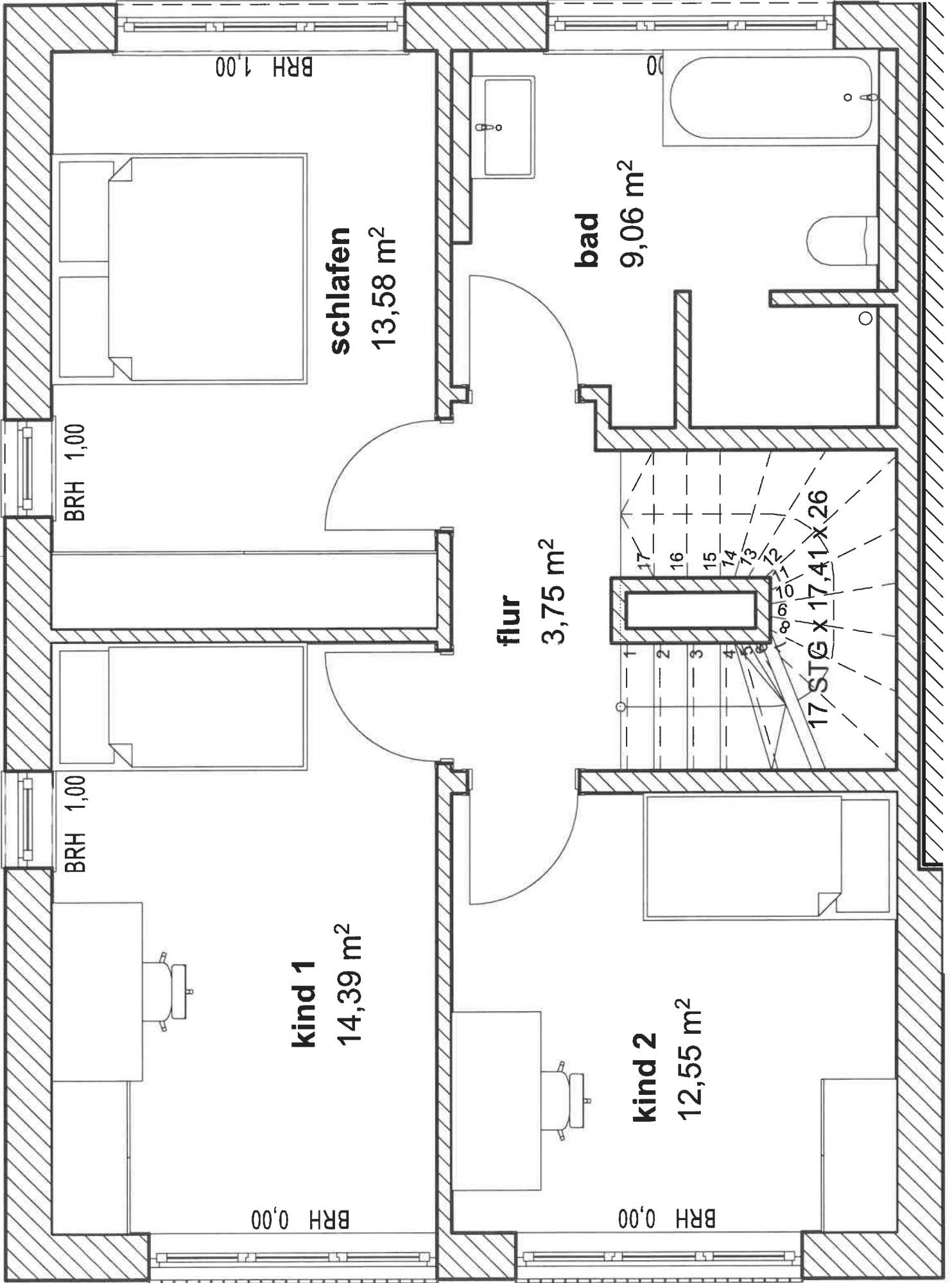


ansicht von west



# schnitt a-a





BRH 1,00

**schlafen**  
13,58 m<sup>2</sup>

**bad**  
9,06 m<sup>2</sup>

**flur**  
3,75 m<sup>2</sup>

**kind 2**  
12,55 m<sup>2</sup>

**kind 1**  
14,39 m<sup>2</sup>

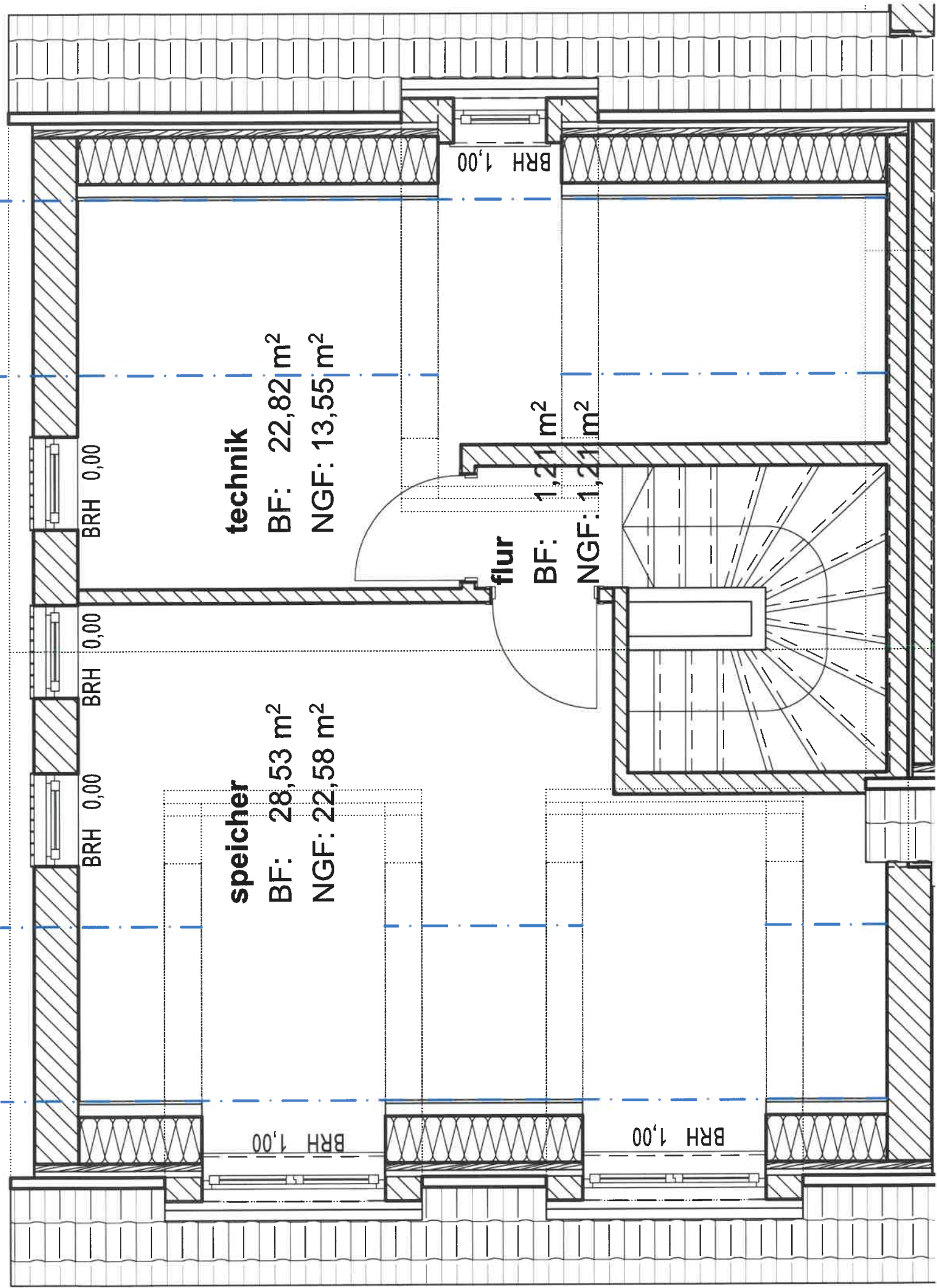
17 STG x 17,41 x 26

BRH 1,00

BRH 1,00

BRH 0,00

BRH 0,00



# Freiflächengestaltung/ abstandsfächen

