

GRENZE

A

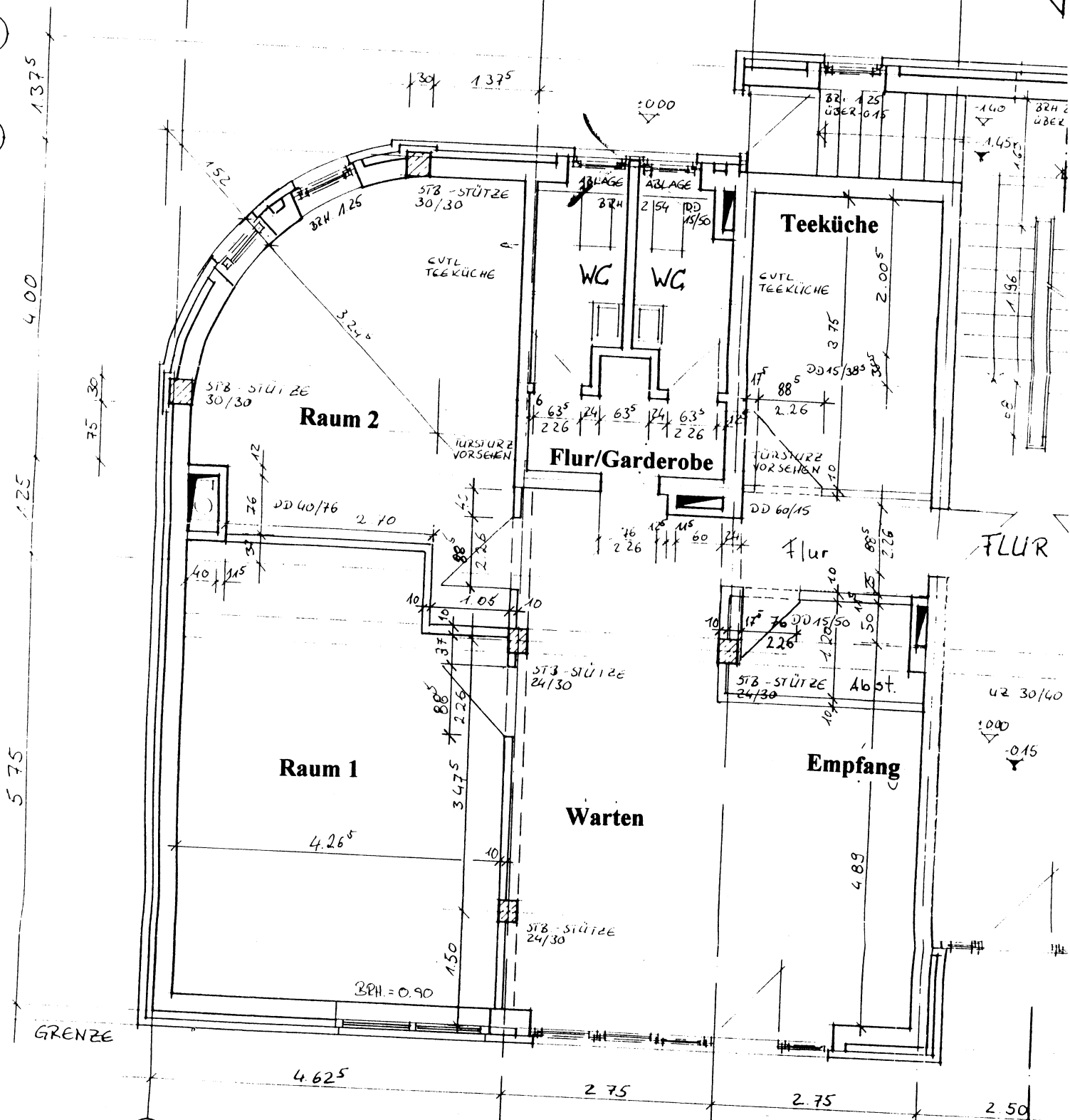
B

C

D

E

1.13	80	2.25	17	37	1.76	4	81.25	88	1.74	88
1.63 ²⁵	1.92 ⁵				63 ⁵			1.92 ⁵		1.13
	76	2.92 ⁷⁵			1.63	42	1.19 ⁵	76	1.86 ⁵	76
	1.92 ⁵				63 ⁵			1.92 ⁵		1.13



2.61 ⁵	2.01	63 ²⁵	3.88 ⁵	1.50 ²⁶	1.86
44	2.11 ²⁵	50 ⁷⁵	2.97 ⁵		
44	2.13 ⁵		4.01	1.00	24
44	2.12 ⁵		3.02 ⁵	20	1.86
		9.76 ⁵		24	2.26
4.26 ⁵		24	2.51	24	2.26
					22.65