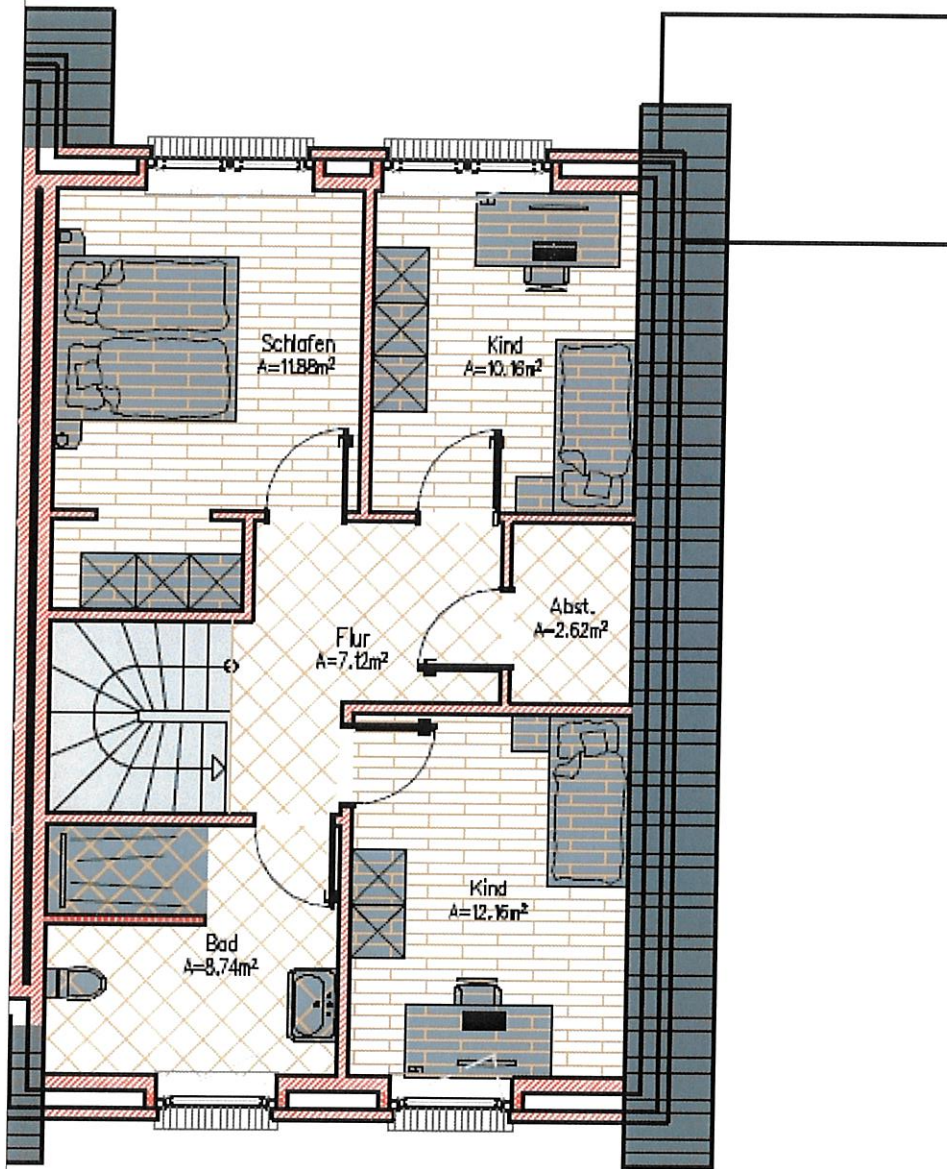


39 | 2.12⁵ | 1.1⁵ | 2.71⁵ | 1.1⁵ | 1.32⁵ | 47

94 | 1.76 | 83⁵ | 1.76 | 1.49

1.87⁵ | 1.87⁵



47 | 2.76 | 1.1⁵ | 2.12⁵ | 1.1⁵ | 98 | 1.1⁵ | 3.51 | 47

47 | 4.00 | 1.1⁵ | 1.98 | 1.1⁵ | 3.51 | 47

47 | 4.00 | 1.1⁵ | 1.98 | 1.1⁵ | 3.51 | 47

10.66 | 1.00

1.75 | 1.26 | 1.31⁵ | 1.26 | 1.75

1.38⁵ | 1.38⁵

39 | 6.39⁵ | 47

39 | 3.24 | 1.1⁵ | 3.04 | 47

7.33⁵

4.12