

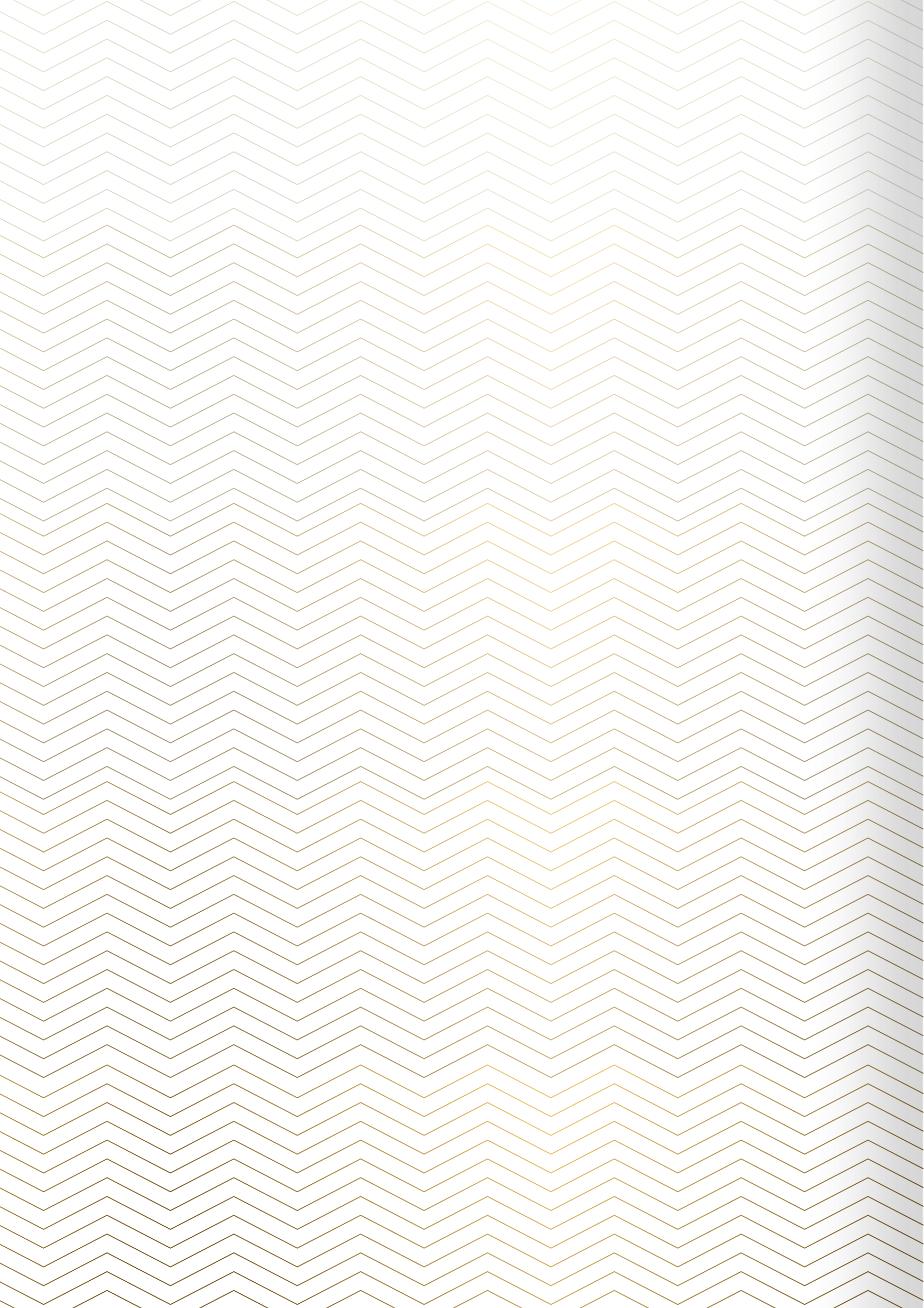
18c

LIMASSOL RESIDENCES



VASSOS
MARKIDES
ESTATES LTD





Exceptional
Seaside Lifestyle



The Sky *Is The Limit*

Offering 180° uninterrupted panoramic views of the sea and the city, 180° Limassol Residences have redesigned luxe coastal living. Comprised of 14 storeys, each level demonstrates contemporary architectural ingenuity.

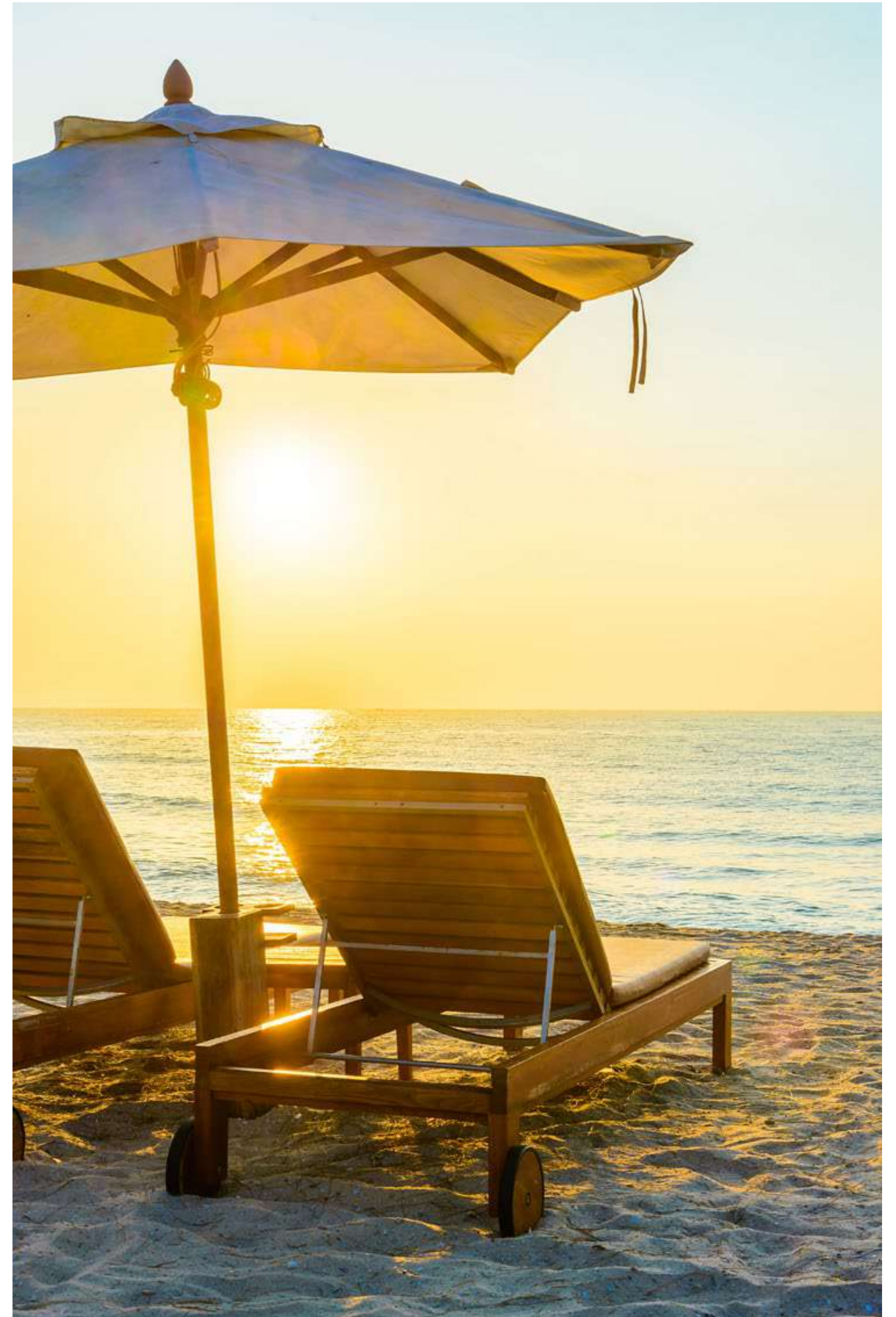
One Unique *Location*



180° is located in the beautiful coastal city of Limassol, a cosmopolitan hub that is an equal mix of modern urban design, edgy beaches and thousands of years of eclectic history.

The city is home to several five-star hotels, exclusive restaurants and bars, and chic designer boutiques which carry some of the most sought-after couture brands in the world.

Limassol is also a renowned international business centre and has become the jurisdiction of choice by some of the largest financial institutions, multinational corporations and technology firms globally.



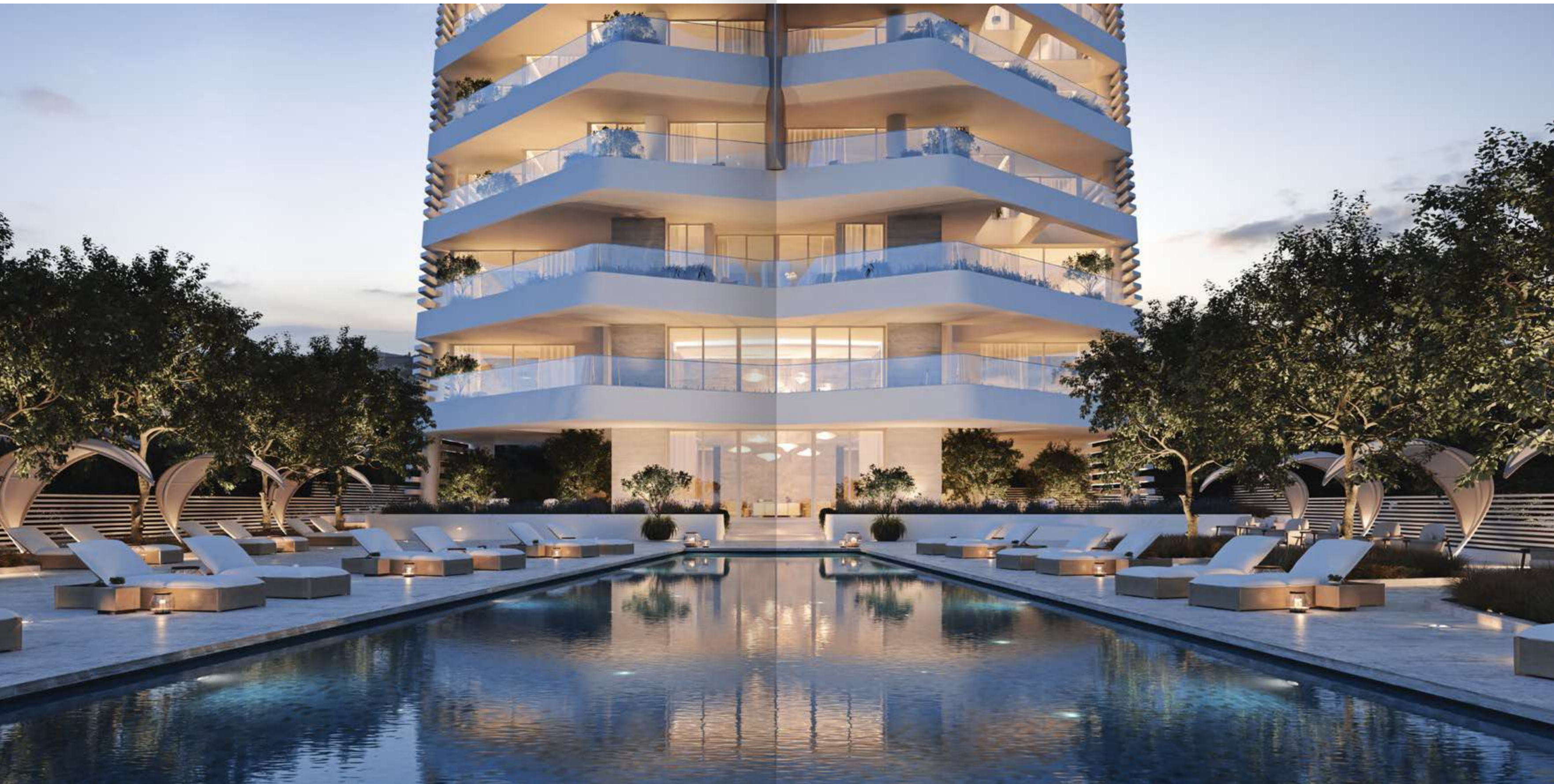
Walk Through *Limassol*

180° is just a stone's throw from Limassol's vibrant promenade, popular for its gorgeous view of the Mediterranean Sea, friendly locals and its buzzing ambience.



Stylish *Exclusivity*

The gated Residences are surrounded by beautiful greenery, offering a sense of solitude and privacy. Residents can enjoy a range of amenities including the gorgeous infinity pool, state-of-the-art gym and secured basement for parking, en-suite staff rooms and private storage facilities.





- Mediterranean Beach Hotel
- Amathountos A
- Four Seasons Hotel
- Amathus Beach Hotel Limassol

LIMASSOL CITY CENTRE

Discover Life
In A Heartbeat...!

180° is perfectly situated on a unique plot of land in the heart of Limassol's tourist district, only 150 meters away from some of the best sandy beaches in the region, and very near to all amenities. Easy access to the highway makes travel through Limassol and to other cities very convenient.

YERMASOYIA MOUTTAGIAKA AGIOS TYCHONAS

AGIOS ATHANASIOS

AGIOS ATHANASIOS

YERMASOYIA

MESA GEITONIA

ou Kyprianou Avenue

Spyrou Kyprianou Avenue

Andrea Kariolou

HOSPITAL

Edessis

Cinema

Poseidonia Beach Hotel

Cyprus Sailing Federation

ou Kyprianou Avenue

The Royal Apollonia Hotel

Londa Hotel

Miramare Beach Hotel

LIMASSOL CITY CENTRE

Griva Digeni

Griva Digeni

Georgiou Avenue

Crowne Plaza Hotel

akariou III

ENAERIOS

Spyrou Araouzou

TOWN CENTRE

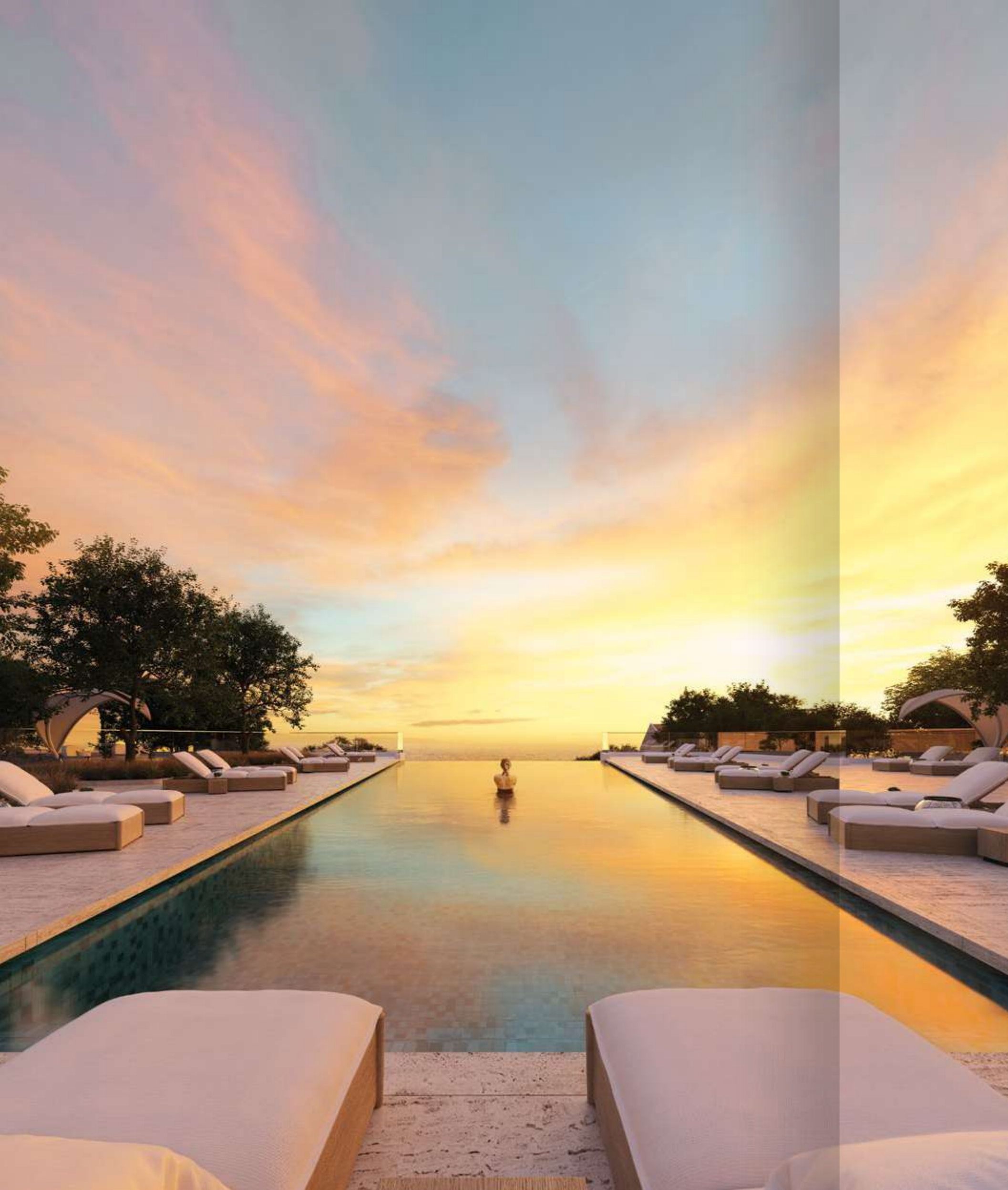
Makariou III

Spyrou Araouzou

Castle

LIMASSOL MARINA

Leontiou I

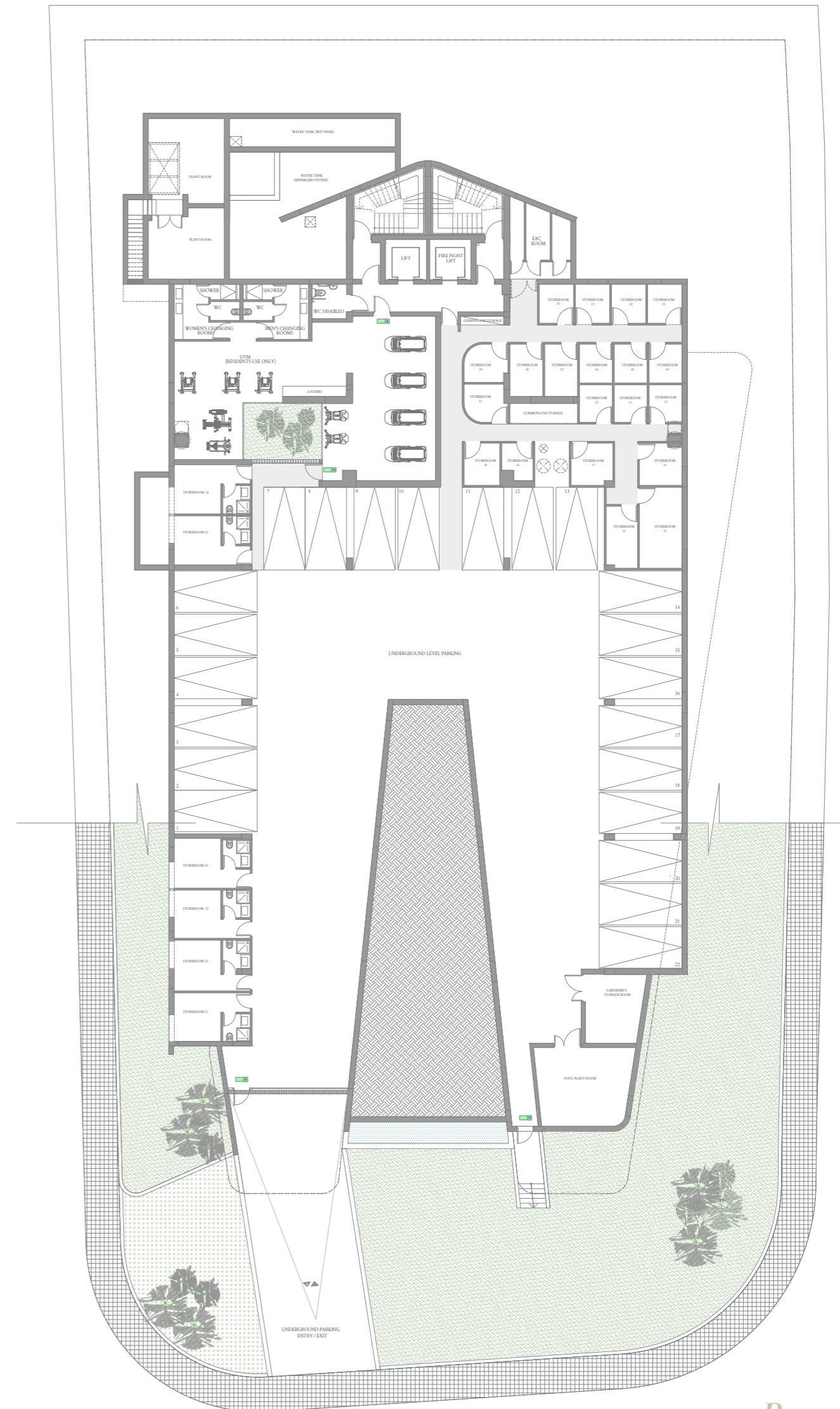


Exceptional *Luxury*

180° has been designed with the ultimate understated luxury in mind. This includes a double height entrance that opens to a stunning vanishing pool with sun decks and planted terraces surrounded by modern landscaped gardens, all of which beautifully complement the aesthetic of the residences.

Getting *Fit*

A state-of-the-art, fully equipped gym ensures you will meet your fitness goals and lead an active, healthy life.

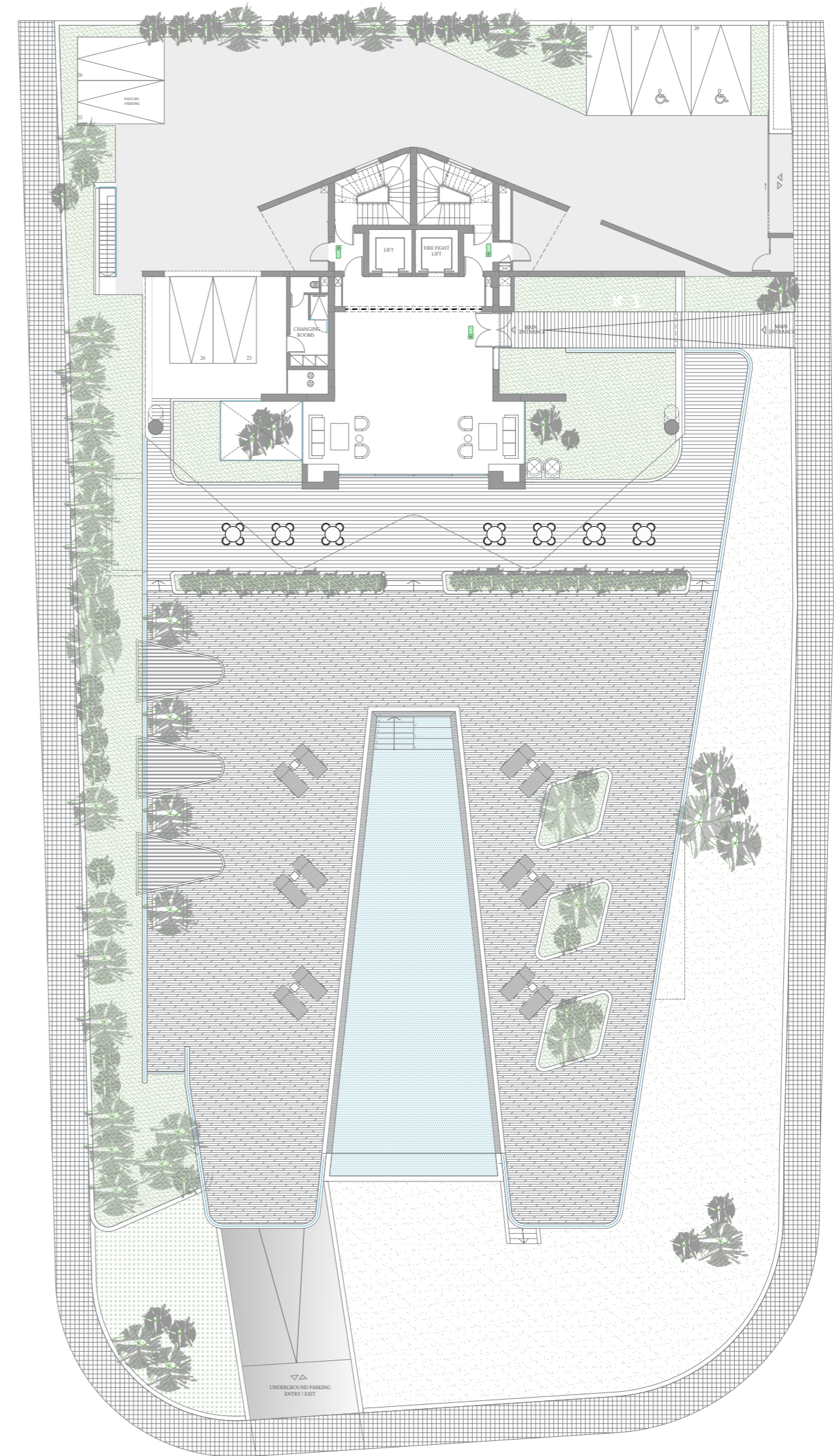


Basement

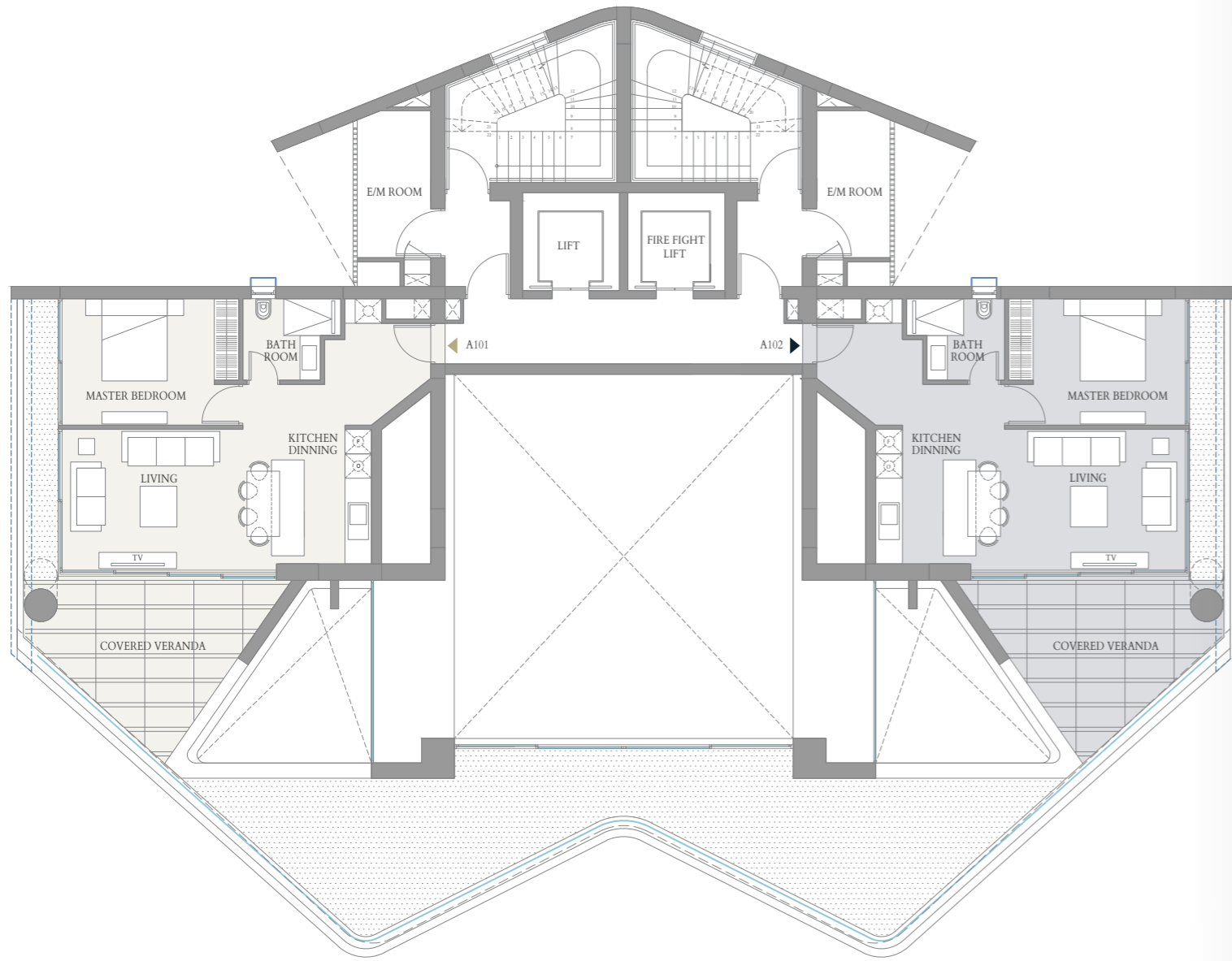
Architectural *Design*

180° consists of 20 high-end stylish apartments offering the ultimate seclusion, exclusivity and privacy.

Combining art and engineering excellence, different floor configurations separate the levels of the building into four distinct parts, transforming urban design.



Ground Floor



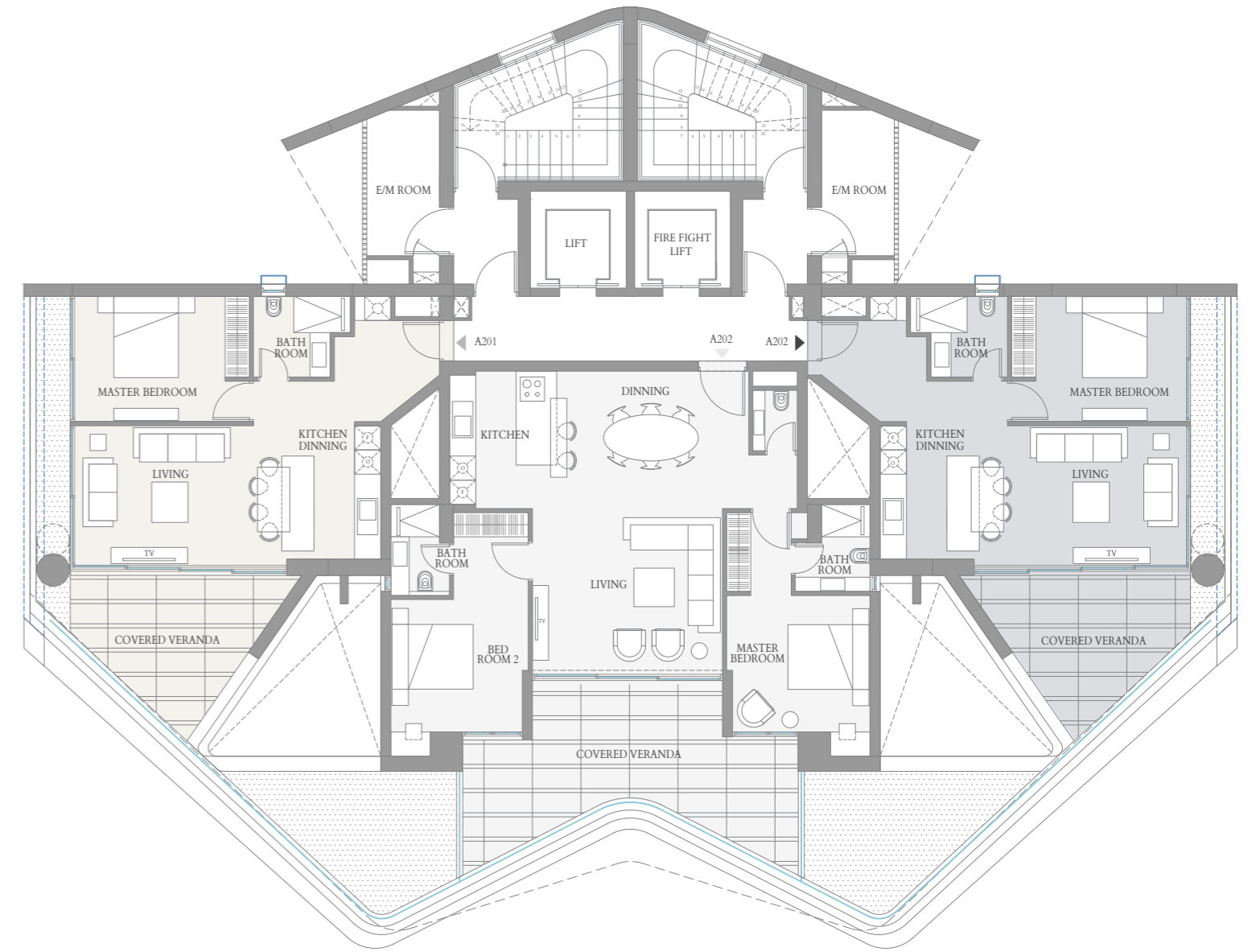
101

Bedrooms	1
Bathrooms & Guest WC	1
Covered Area	108m ²
En-suite Staff Room	-
Uncovered Veranda	-
TOTAL AREA	108m²

102

Bedrooms	1
Bathrooms & Guest WC	1
Covered Area	108m ²
En-suite Staff Room	-
Uncovered Veranda	-
TOTAL AREA	108m²

Floor - 01



201

Bedrooms	1
Bathrooms & Guest WC	1
Covered Area	105m ²
En-suite Staff Room	-
Uncovered Veranda	-
TOTAL AREA	105m²

202

Bedrooms	2
Bathrooms & Guest WC	3
Covered Area	171m ²
En-suite Staff Room	-
Uncovered Veranda	-
TOTAL AREA	171m²

203

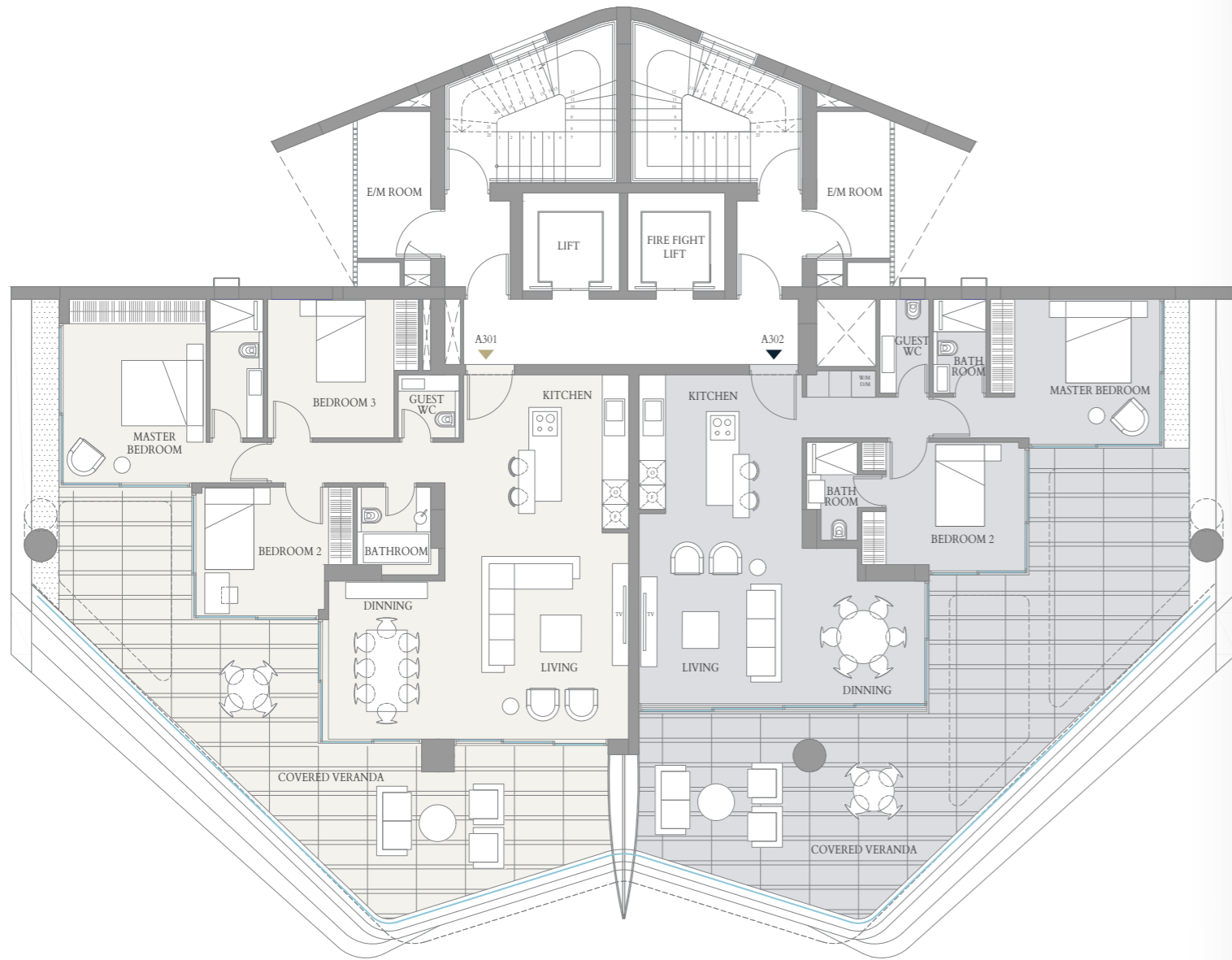
Bedrooms	1
Bathrooms & Guest WC	1
Covered Area	105m ²
En-suite Staff Room	-
Uncovered Veranda	-
TOTAL AREA	105m²

Floor - 02



Infinity *Pool*

Measuring half the length of an Olympic sized pool, the elevated, beautifully designed infinity pool offers unobstructed breath-taking views of the Mediterranean Sea and the surrounding green spaces, making for a luxury pool-side experience.



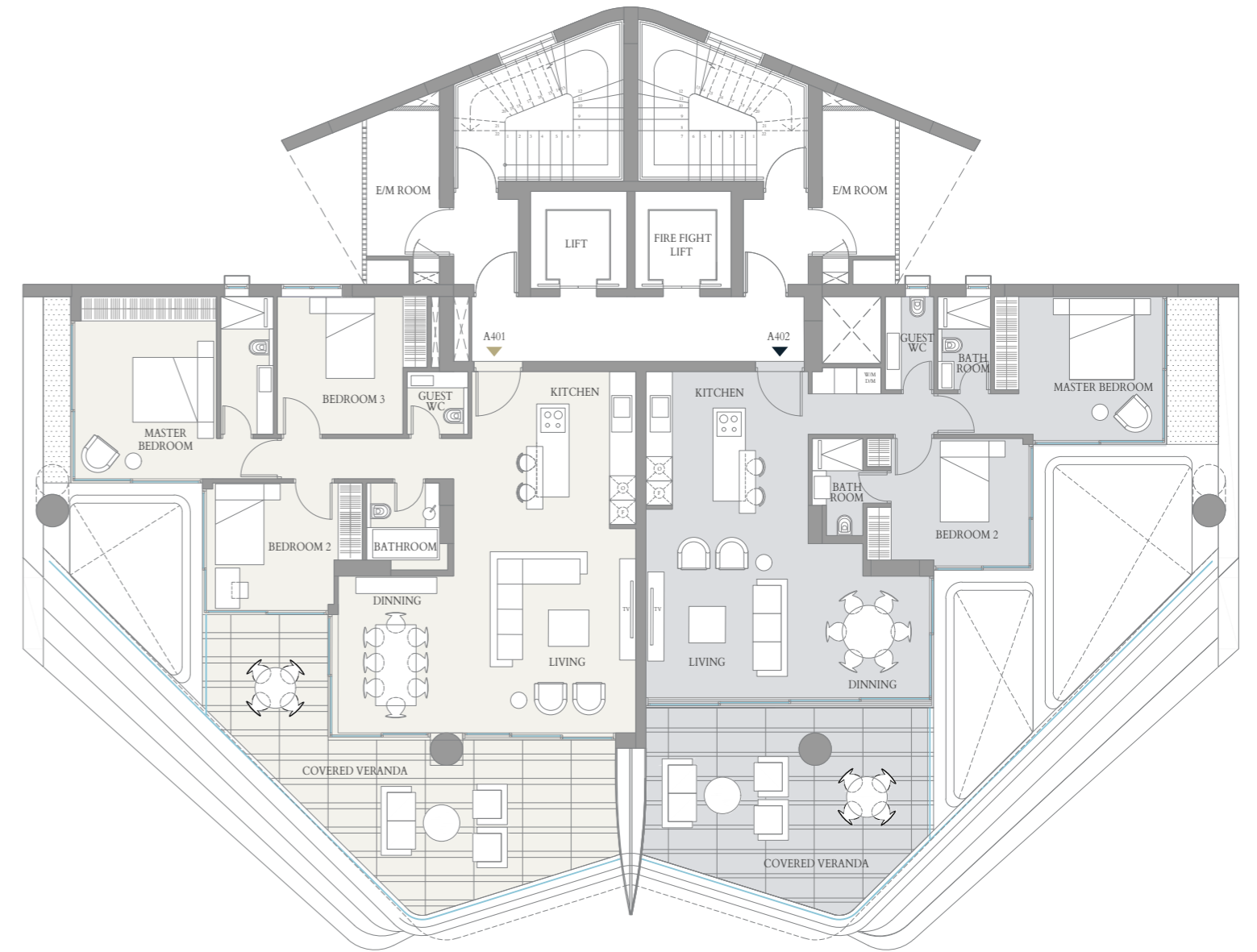
301

Bedrooms	3
Bathrooms & Guest WC	3
Covered Area	233m ²
En-suite Staff Room	-
Uncovered Veranda	-
TOTAL AREA	233m²

302

Bedrooms	2
Bathrooms & Guest WC	3
Covered Area	216m ²
En-suite Staff Room	-
Uncovered Veranda	-
TOTAL AREA	216m²

Floor - 03



401

Bedrooms	3
Bathrooms & Guest WC	3
Covered Area	213m ²
En-suite Staff Room	-
Uncovered Veranda	-
TOTAL AREA	213m²

402

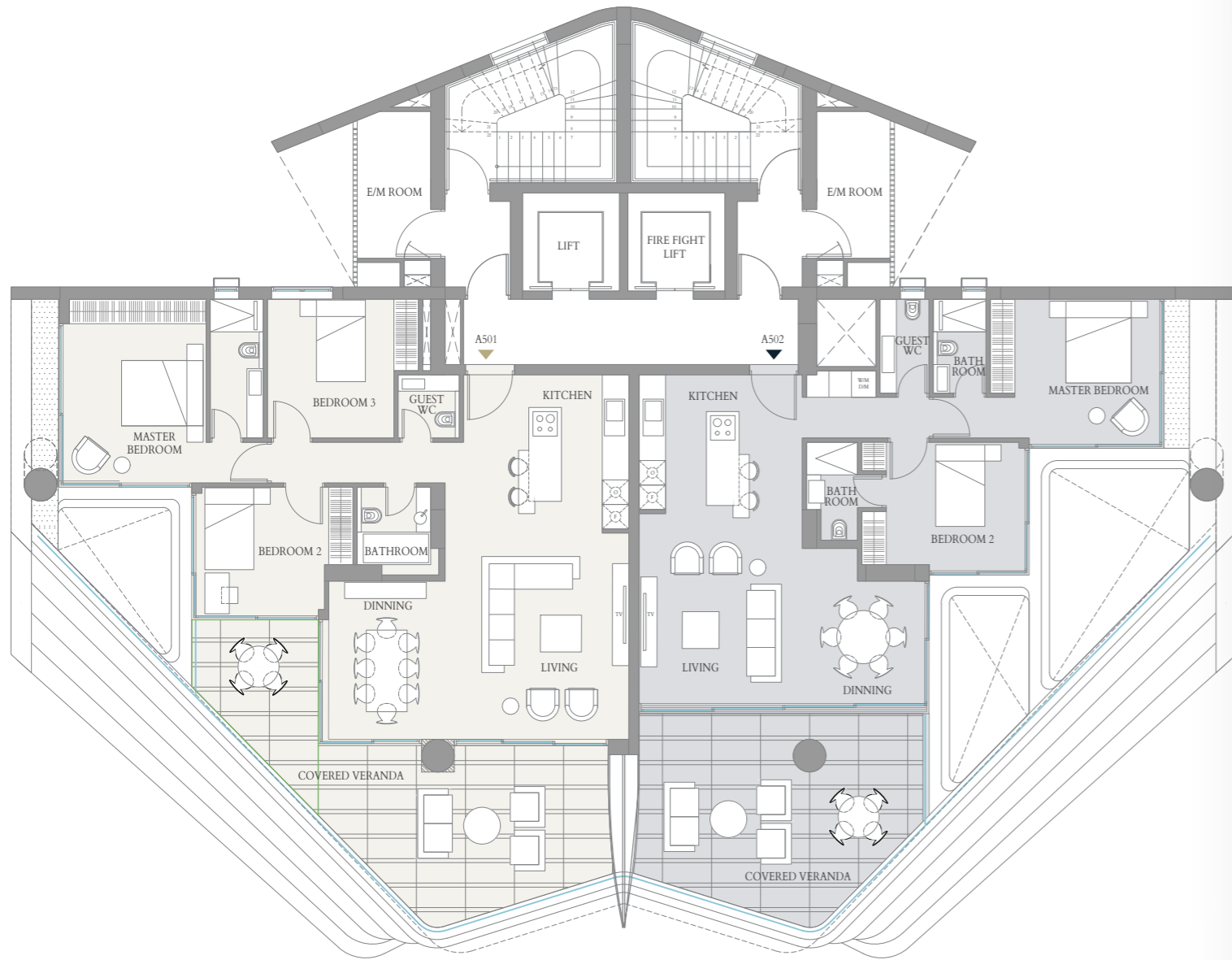
Bedrooms	2
Bathrooms & Guest WC	3
Covered Area	172m ²
En-suite Staff Room	-
Uncovered Veranda	-
TOTAL AREA	172m²

Floor - 04

Modern *Ambience...!*

Each apartment is an oasis of contemporary living. Striking interiors, high ceilings and sophisticated finishes evoke a unique sense of elegance, warmth and relaxation.





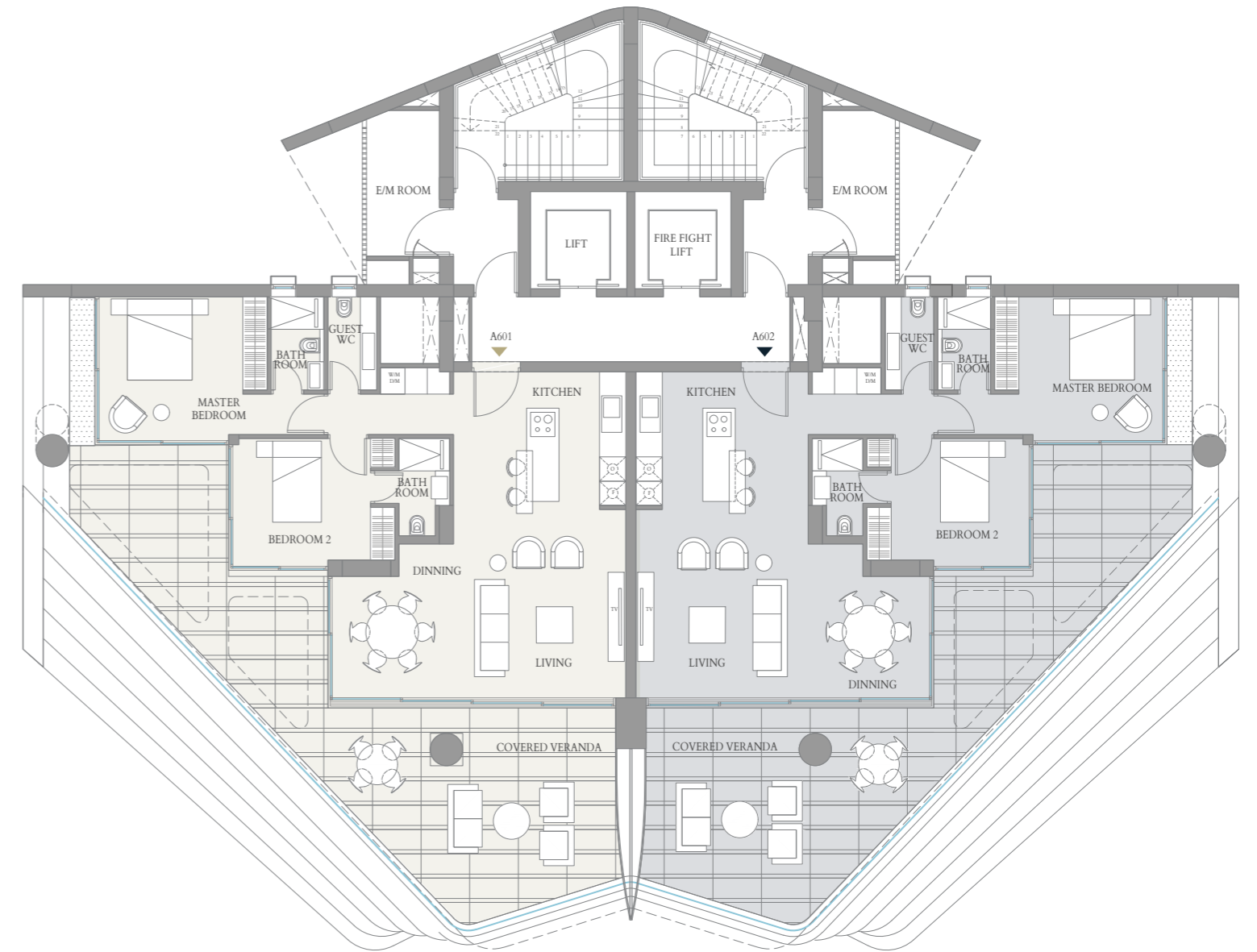
501

Bedrooms	3
Bathrooms & Guest WC	3
Covered Area	211m ²
En-suite Staff Room	-
Uncovered Veranda	-
TOTAL AREA	211m²

502

Bedrooms	2
Bathrooms & Guest WC	3
Covered Area	172m ²
En-suite Staff Room	-
Uncovered Veranda	-
TOTAL AREA	172m²

Floor - 05



601

Bedrooms	2
Bathrooms & Guest WC	3
Covered Area	207m ²
En-suite Staff Room	-
Uncovered Veranda	-
TOTAL AREA	207m²

602

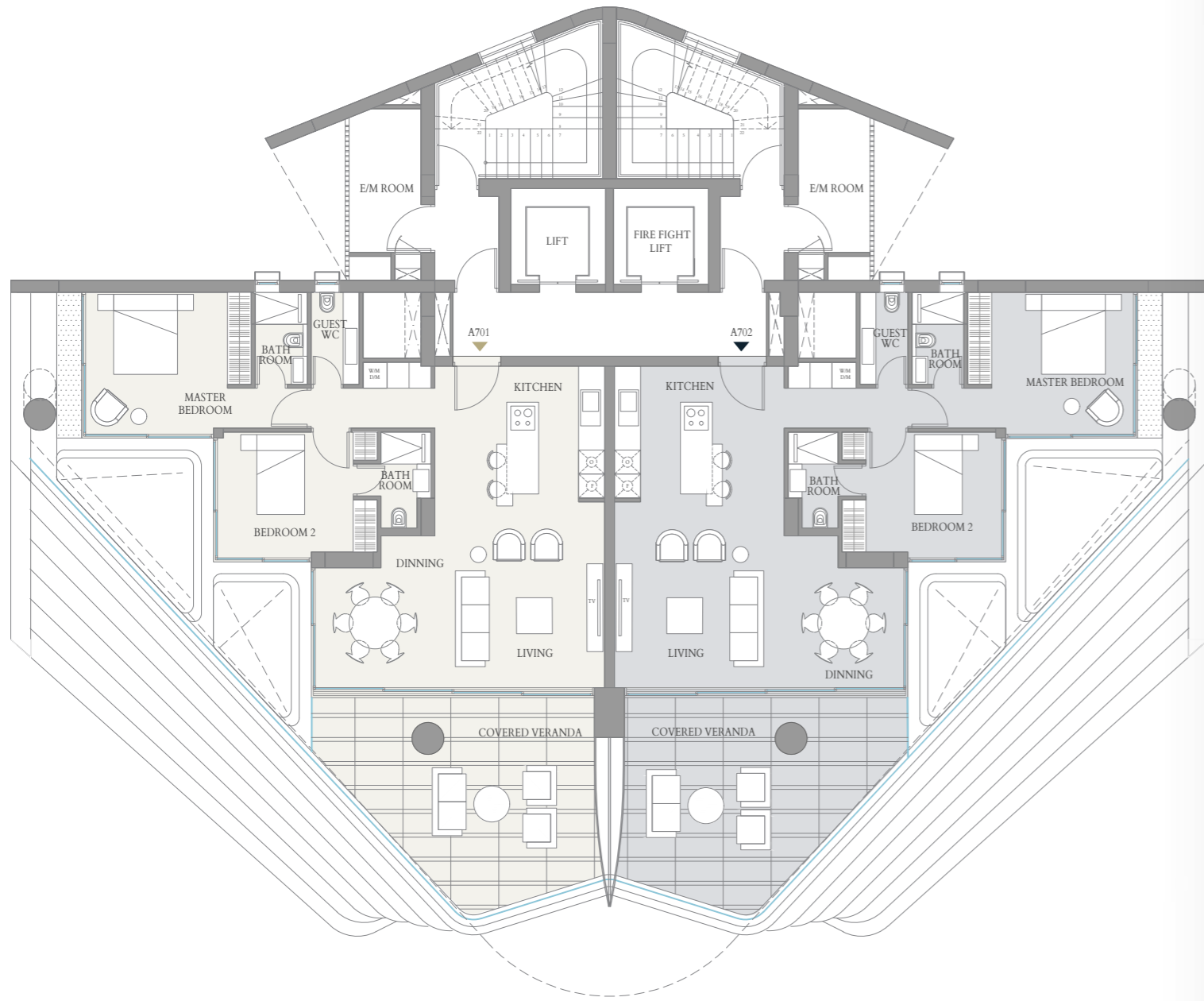
Bedrooms	2
Bathrooms & Guest WC	3
Covered Area	207m ²
En-suite Staff Room	-
Uncovered Veranda	-
TOTAL AREA	207m²

Floor - 06



Beautiful *Spaces*

Innovative design elements add modern appeal to every apartment. The play on light, texture, space and form produces a stunning visual aesthetic. Full height glazed doors leading to large private balconies, seamlessly merge the interior with the exterior, creating an abundance of space and a feeling of airiness.



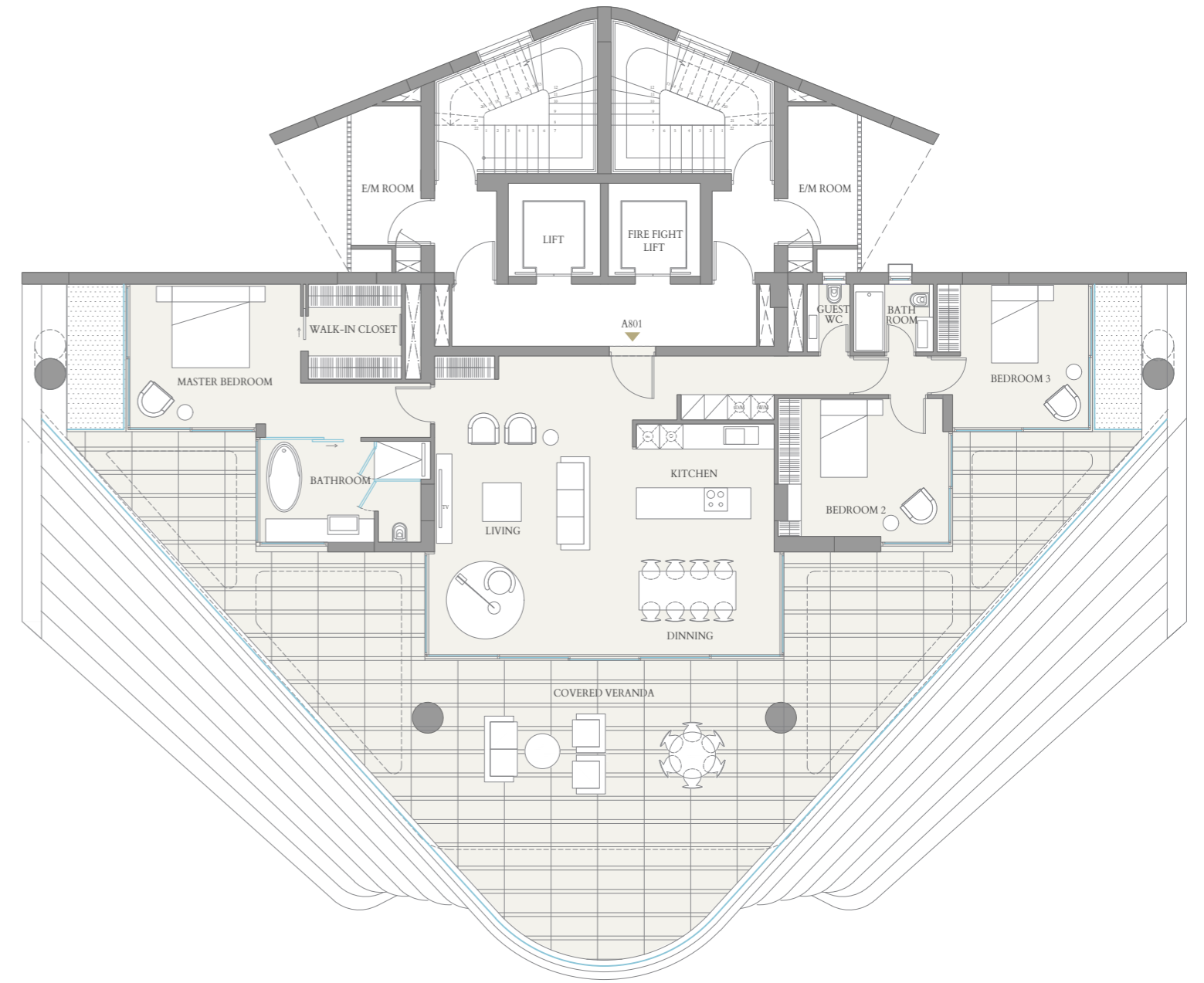
701

Bedrooms	2
Bathrooms & Guest WC	3
Covered Area	175m ²
En-suite Staff Room	-
Uncovered Veranda	-
TOTAL AREA	175m²

702

Bedrooms	2
Bathrooms & Guest WC	3
Covered Area	175m ²
En-suite Staff Room	-
Uncovered Veranda	-
TOTAL AREA	175m²


Floor - 07



801

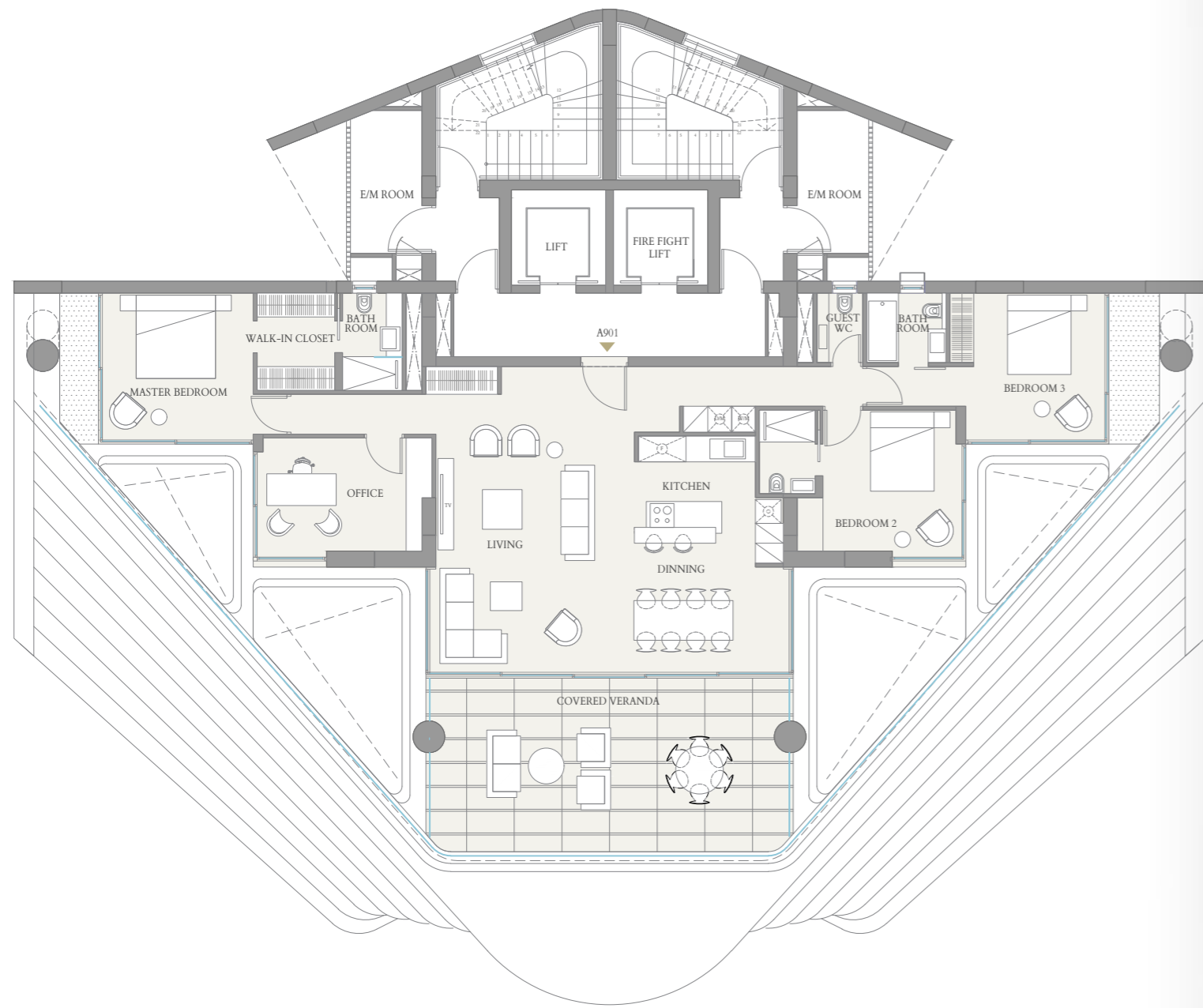
Bedrooms	3 or 4
Bathrooms & Guest WC	3 or 4
Covered Area	387m ²
En-suite Staff Room	15m ²
Uncovered Veranda	10m ²
TOTAL AREA	412m²

Floor - 08



Room with a *View...!*

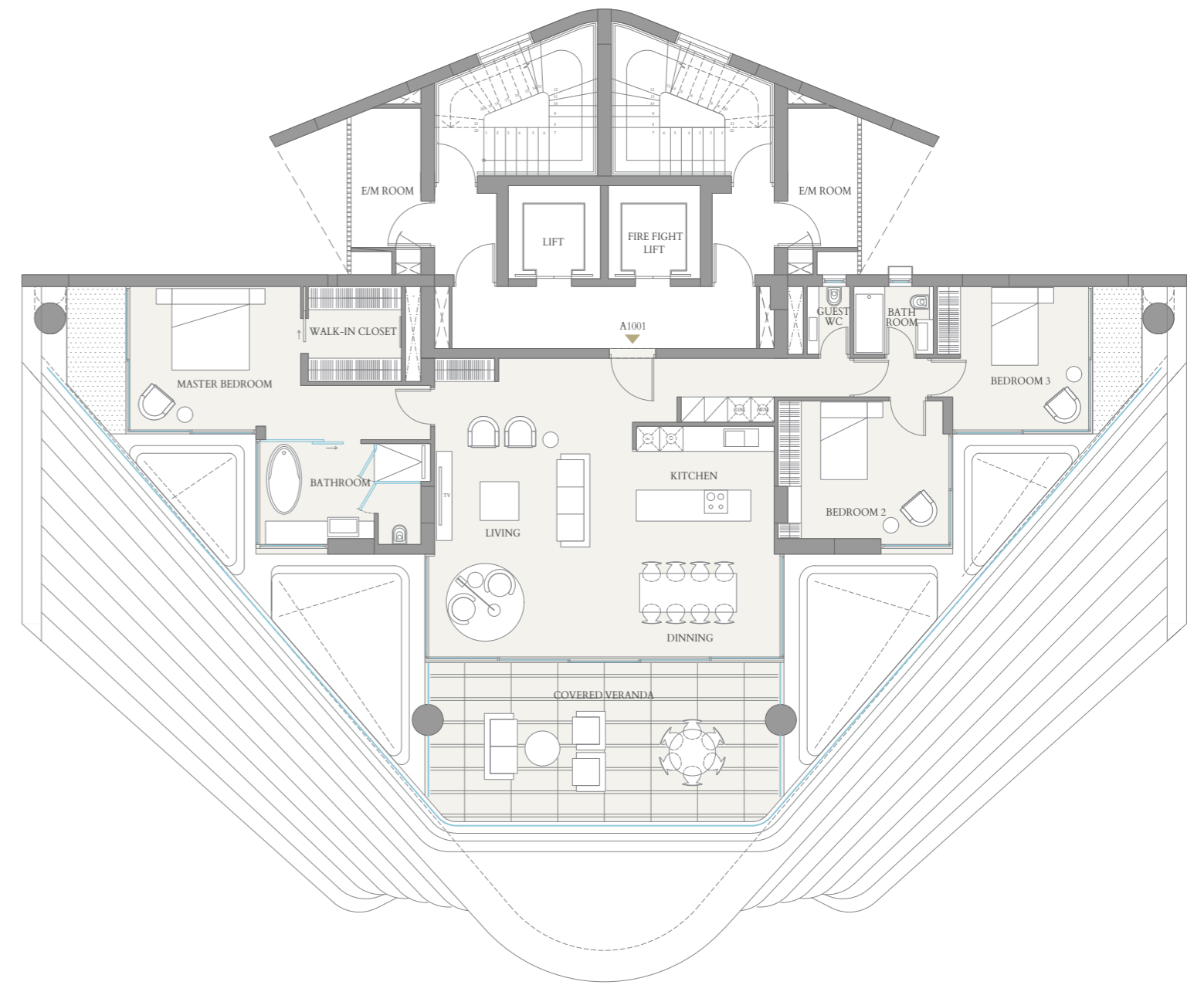
No matter where you are in your apartment, 180° offers spectacular sea views from every room.



901

Bedrooms	3 or 4
Bathrooms & Guest WC	3 or 4
Covered Area	293m ²
En-suite Staff Room	15m ²
Uncovered Veranda	-
TOTAL AREA	308m²

Floor - 09



1001

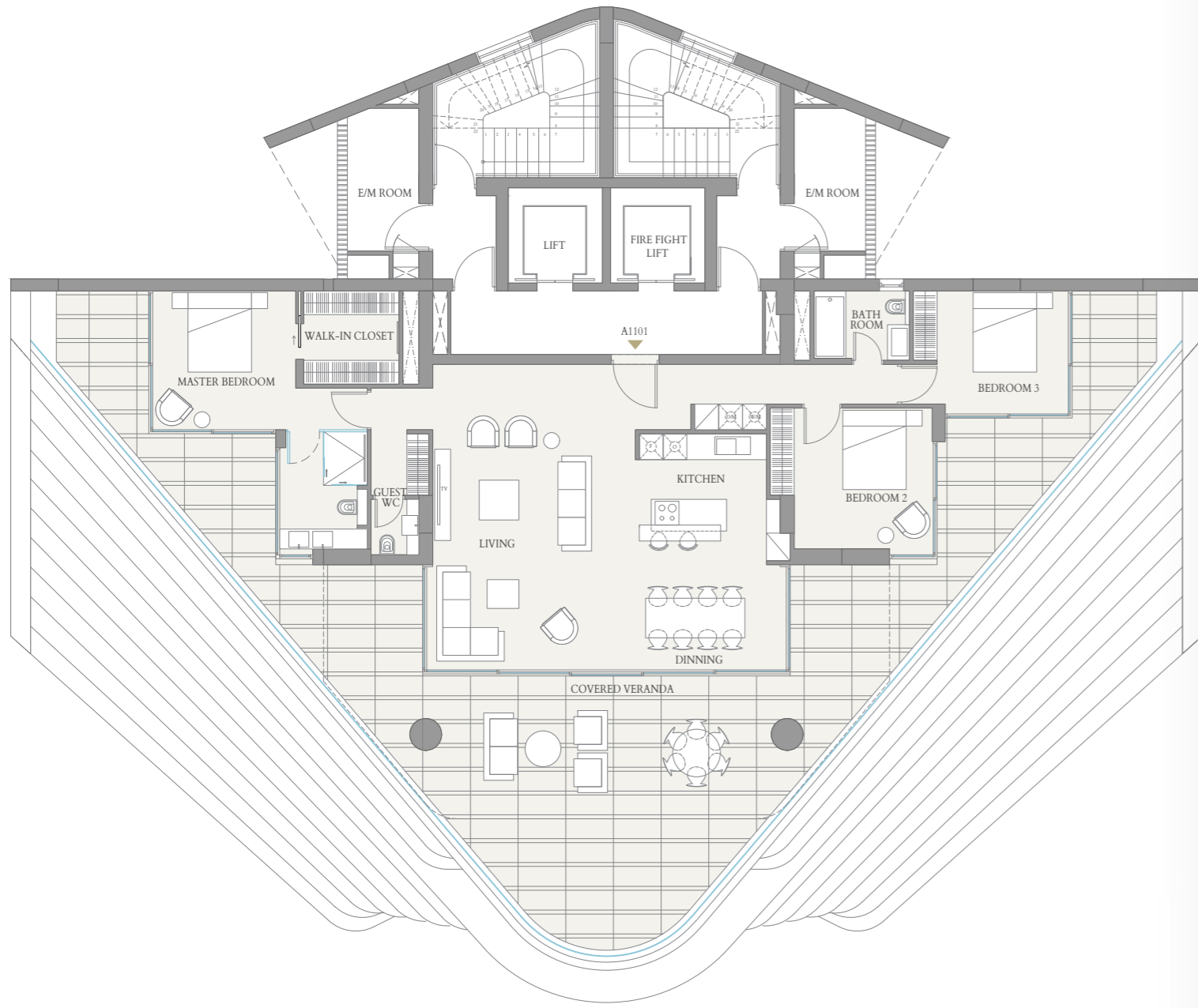
Bedrooms	3 or 4
Bathrooms & Guest WC	3 or 4
Covered Area	290m ²
En-suite Staff Room	15m ²
Uncovered Veranda	-
TOTAL AREA	305m²

Floor - 10

Bedroom *Retreat*

Every bedroom is a haven of modern design. A neutral colour palette makes the space feel open and light, and the breath-taking Mediterranean Sea provides a gorgeous coastal backdrop that elevates the atmosphere.

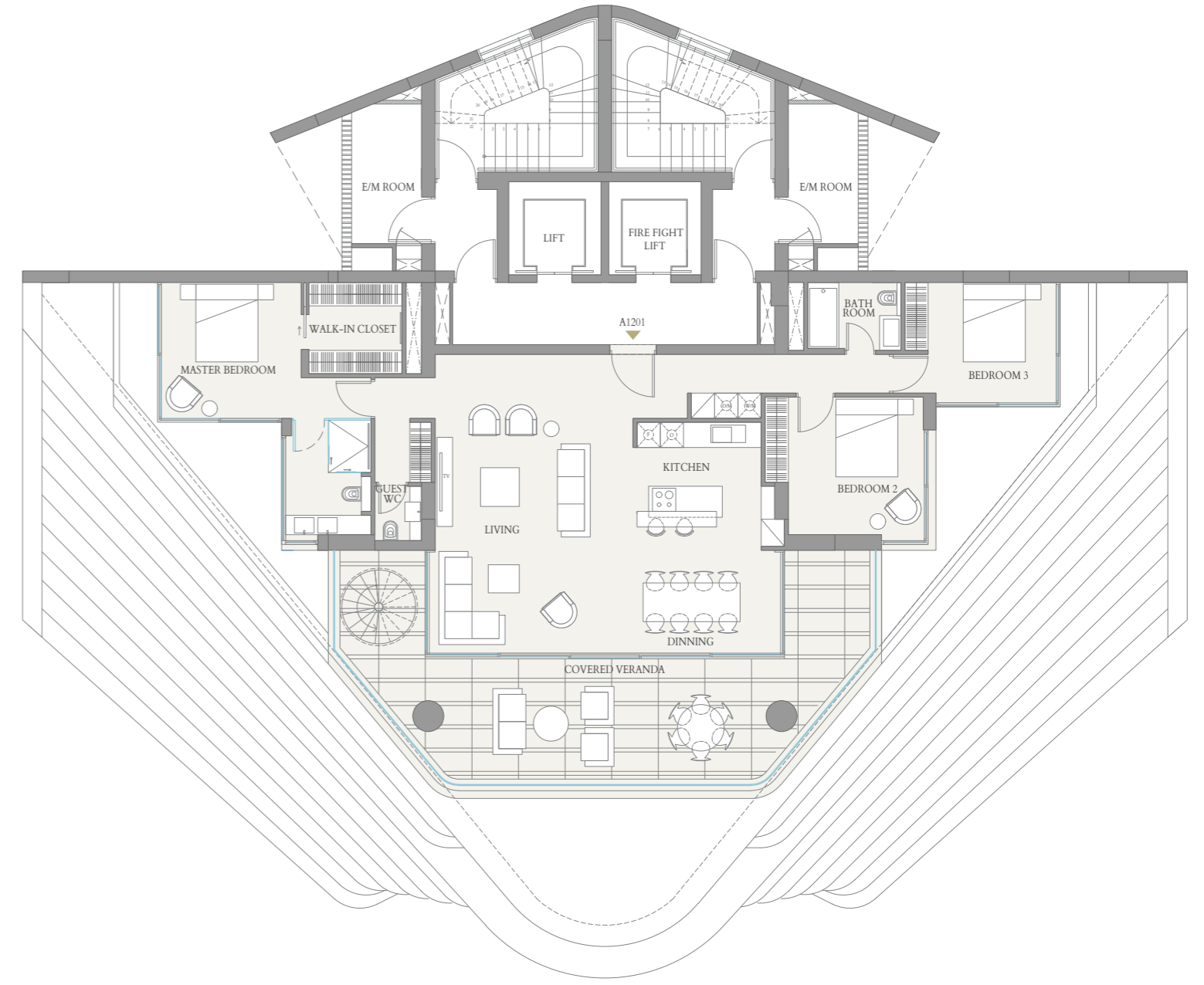




1101

Bedrooms	3 or 4
Bathrooms & Guest WC	3 or 4
Covered Area	336m ²
En-suite Staff Room	15m ²
Uncovered Veranda	29m ²
TOTAL AREA	380m²

Floor - 11



1201

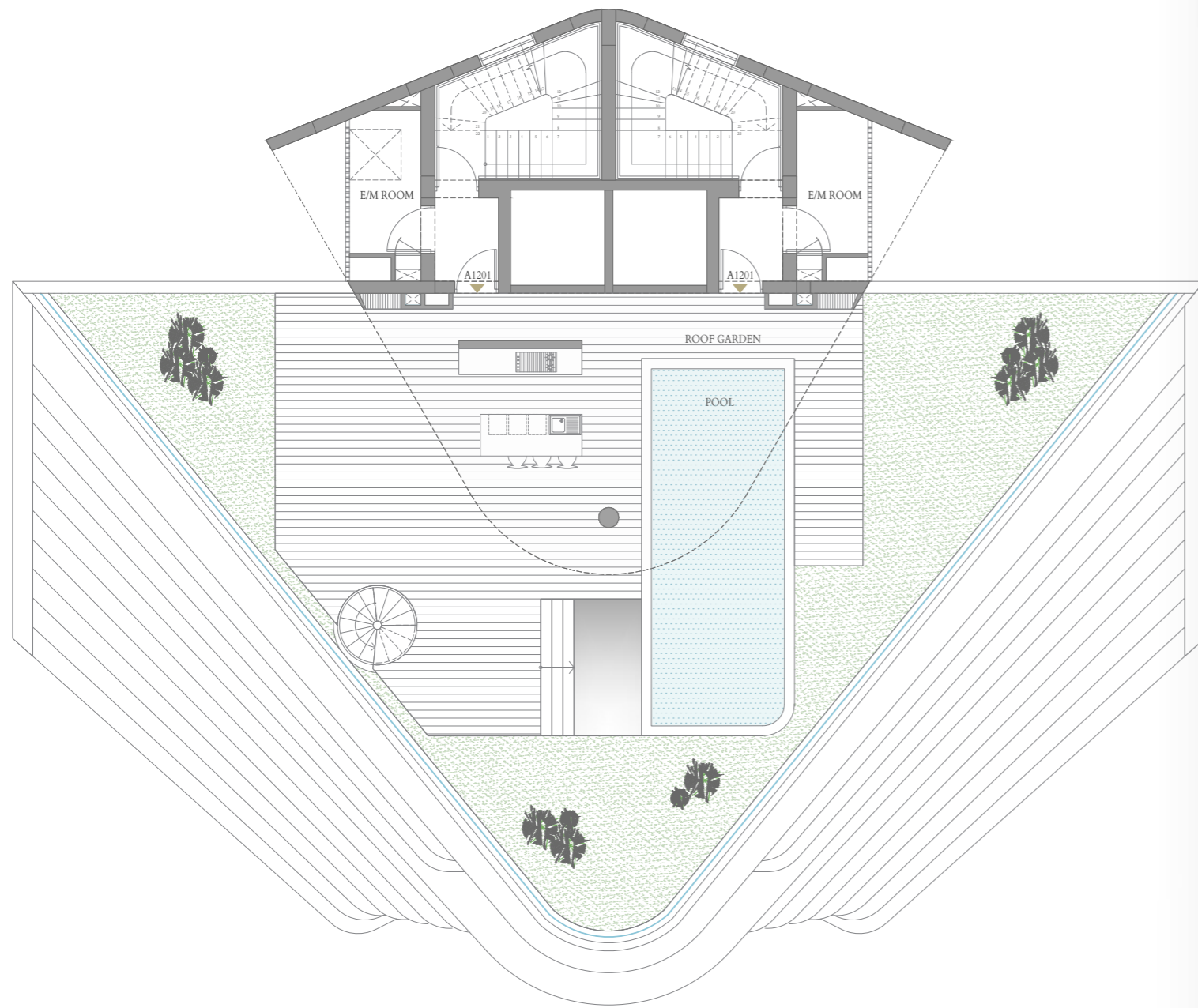
Bedrooms	3 or 4
Bathrooms & Guest WC	3 or 4
Covered Area	284m ²
En-suite Staff Room	15m ²
Uncovered Veranda	-

Floor - 12

Penthouse *Living*

This extraordinary two-storey apartment with its timeless exquisite design provides incredible 180° views of the Mediterranean Sea and city landscape.





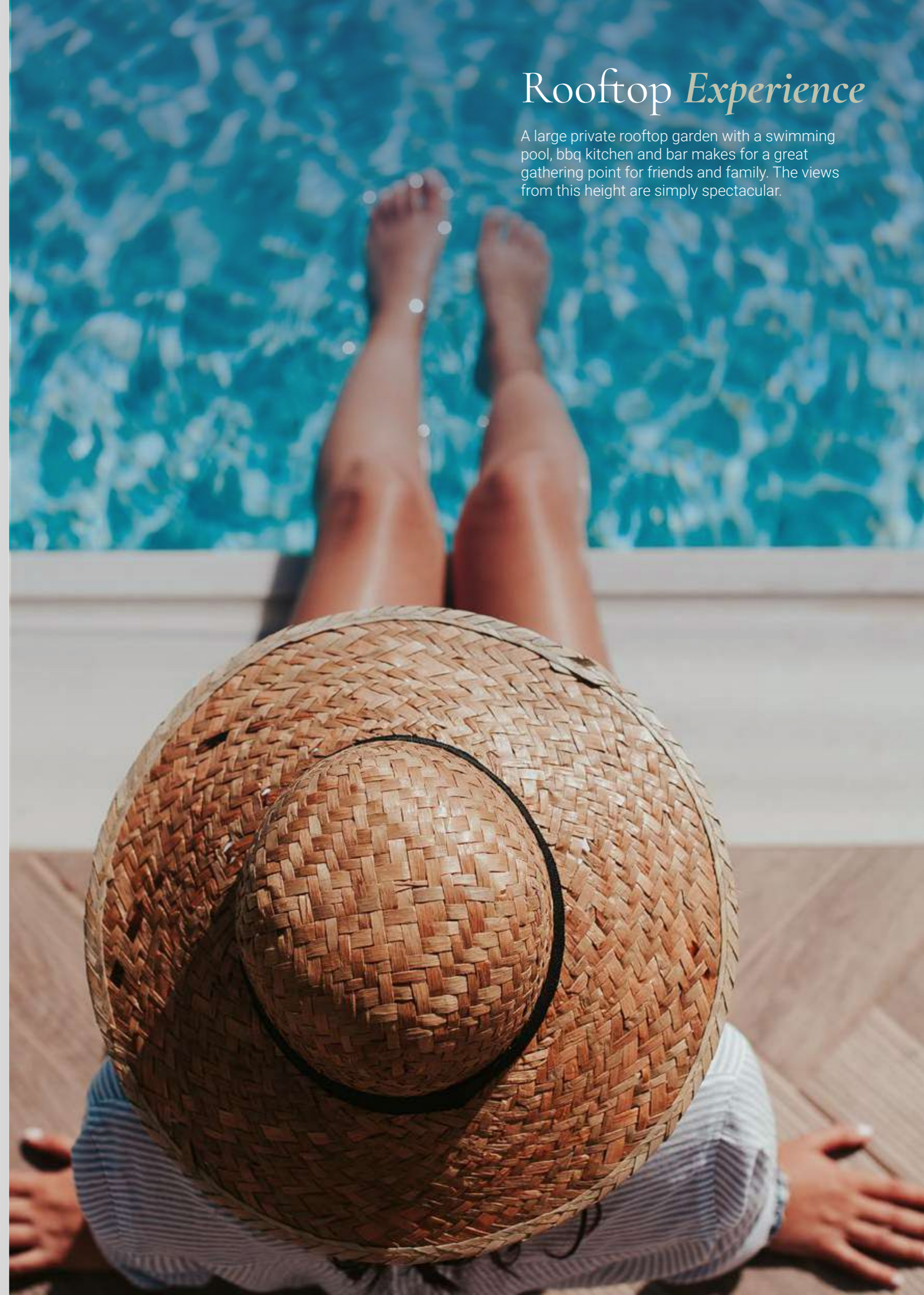
1201

Bedrooms	-
Bathrooms & Guest WC	1
Covered Area	64m ²
En-suite Staff Room	-
Uncovered Veranda	211m ²
TOTAL AREA	574m²

Rooftop

Rooftop *Experience*

A large private rooftop garden with a swimming pool, bbq kitchen and bar makes for a great gathering point for friends and family. The views from this height are simply spectacular.



Exceptional *Seaside Lifestyle...*

180° turns dreams into a reality. Experience living by the sea in a contemporary coastal city setting, cultural attractions, dazzling sunsets and an exhilarating way of life.



Vassos Markides *Estates Ltd*

Founded over 40 years ago, Vassos Markides Estates Ltd is recognised as a leading property development company in Cyprus, with an extensive portfolio comprised of contemporary office spaces, luxury apartments and beautiful villas across the island.

Our team is comprised of top, industry leading architects, civil engineers and property experts, building innovative residential and commercial properties with innovative design elements, that cater to the needs and tastes of every client.

We have an impeccable reputation for our expertise, professionalism, efficiency and strategic thinking, delivering successful developments that yield a strong investment return.

