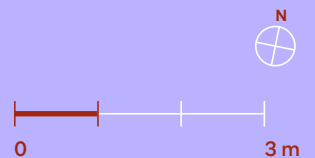
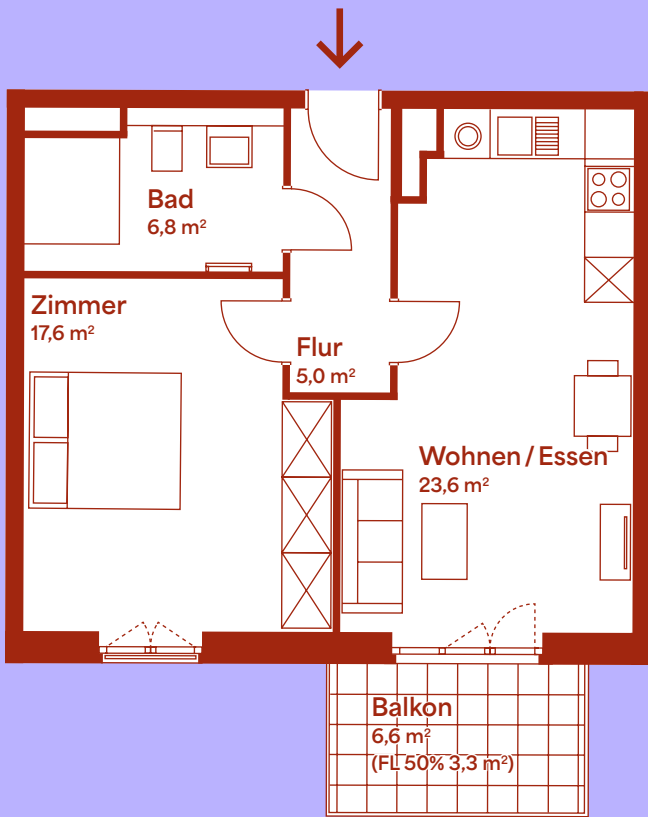


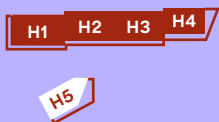
Wohneinheit 69

2. Obergeschoss | Haus 5 | 2 Zimmer

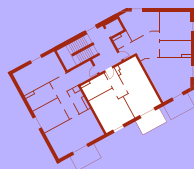
ROTEN BLEICHER



LAGEPLAN



2. OBERGESCHOSS



ANSICHT WEST



Haus 5

Zimmer	17,6 m ²
Bad	6,8 m ²
Flur	5,0 m ²
Wohnen / Essen	23,6 m ²
Balkon (50%)	3,3 m ²
Grundfläche ca.	56,3 m²