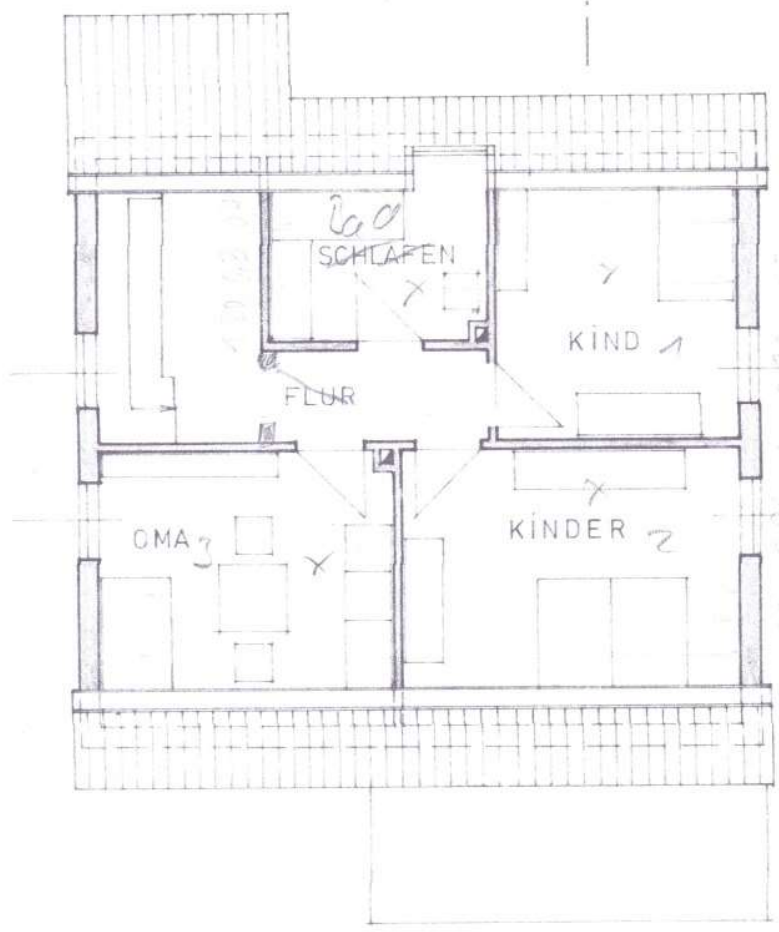


30 | 2.26 | 115 | 2.765 | 115 | 3.26 | 30

B



8.24
 30 | 3.76 | 115 | 1.26 | 115 | 2.39 | 30

30 | 3.765 | 115 | 3.765 | 30
 30 | 3.76 | 30

30 | 4.015 | 115 | 4.51 | 30
 9.24

A

DACHGESCHOSS