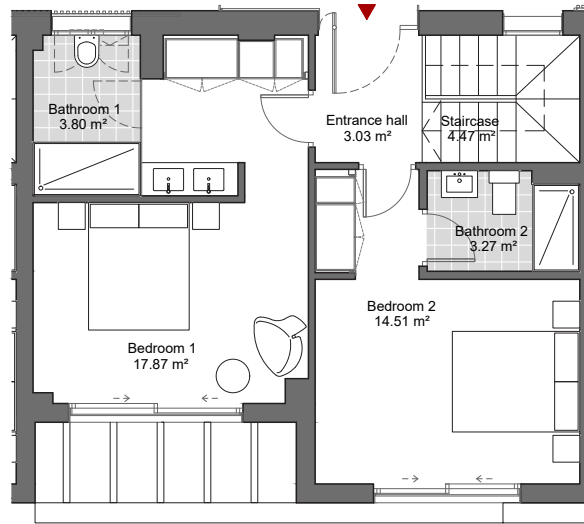


GROUND FLOOR

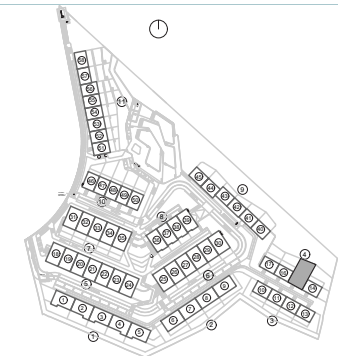


FIRST FLOOR

Internal usable area	89.75 m ²
Covered ext. usable area	5.10 m ²
Uncovered ext. usable floor area	15.40 m ²
Total usable floor area	110.25 m ²
Garden area	46.15 m ²
Constructed area with communal areas	114.91 m²

The constructed area includes 100% of the covered outdoor spaces.

Useful floor area as per decree BOJA 218/2005.	92.30 m ²
Built area as per decree BOJA 218/2005.	107.08 m ²



The present plan, building specifications and infographics are merely indicative, and are not contractual in nature in terms of colours, textures, vegetation, height of fencing and furniture, opening/rotation of openings, location of installations or sanitary fittings. Likewise, in the stairs leading down to the cellar or basement, if any, and the exit to patios and/or gardens, the number of steps and the level of the plots are for guidance purposes only. To this effect, IDILIQ GROUP reserves the right to introduce those modifications that are motivated by technical, constructive, legal, juridical or supply reasons that are indicated by the Project Management as being necessary or convenient for the correct completion of the building and/or that are ordered by the competent public bodies.