

+8.00m KG-Decke

G

Wohnung 1.0.02 = 88,14 m²

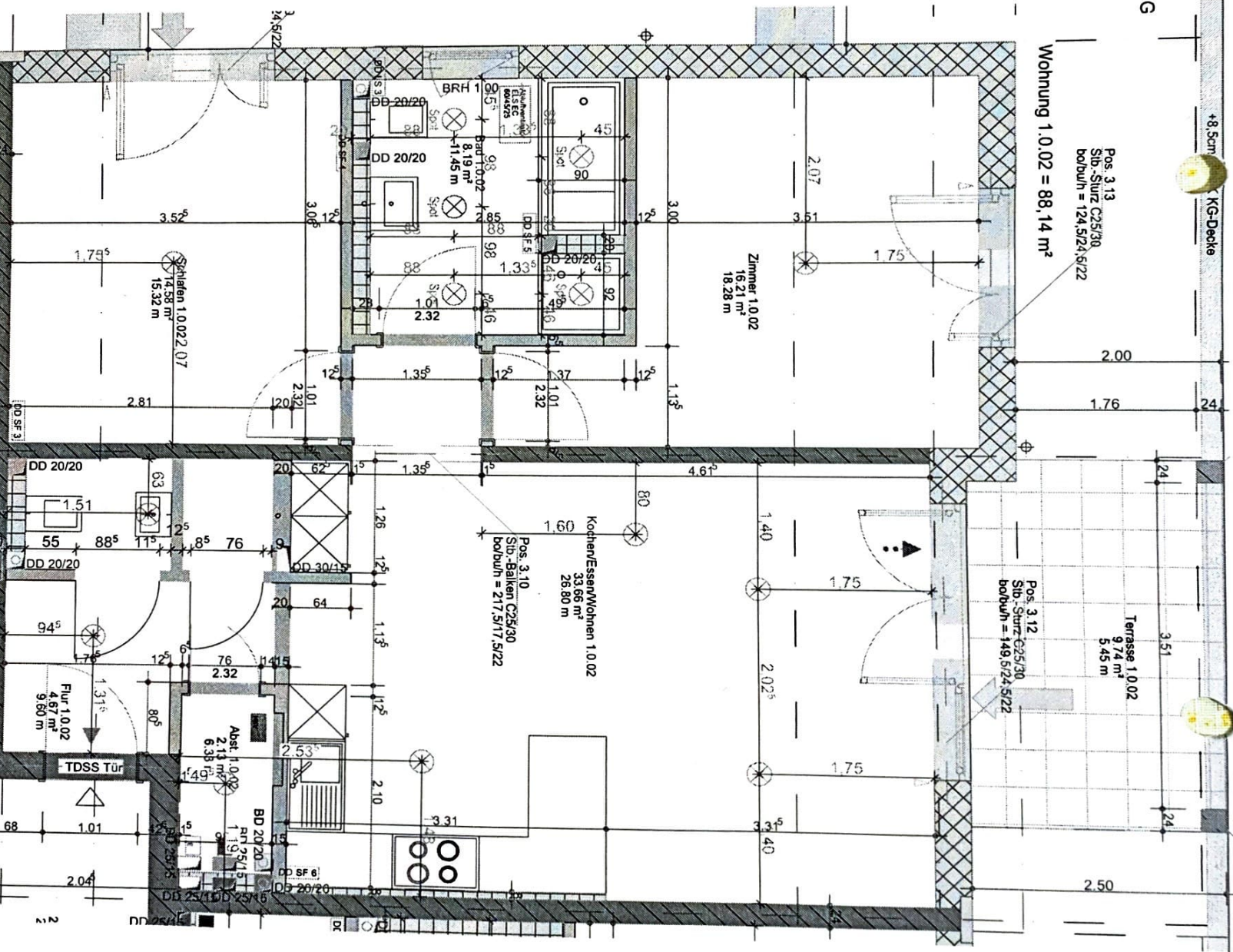
Pos. 3.13
Stb.-Sturz C25/30
bo/bu/h = 124,5/24,5/22

Terrasse 1.0.02
9,74 m²
5,45 m

Pos. 3.12
Stb.-Sturz C25/30
bo/bu/h = 149,5/24,5/22

Zimmer 1.0.02
16,21 m²
18,28 m

Kochen/Essen/Wohnen 1.0.02
33,66 m²
26,80 m
Pos. 3.10
Stb.-Balken C25/30
bo/bu/h = 217,5/17,5/22



N