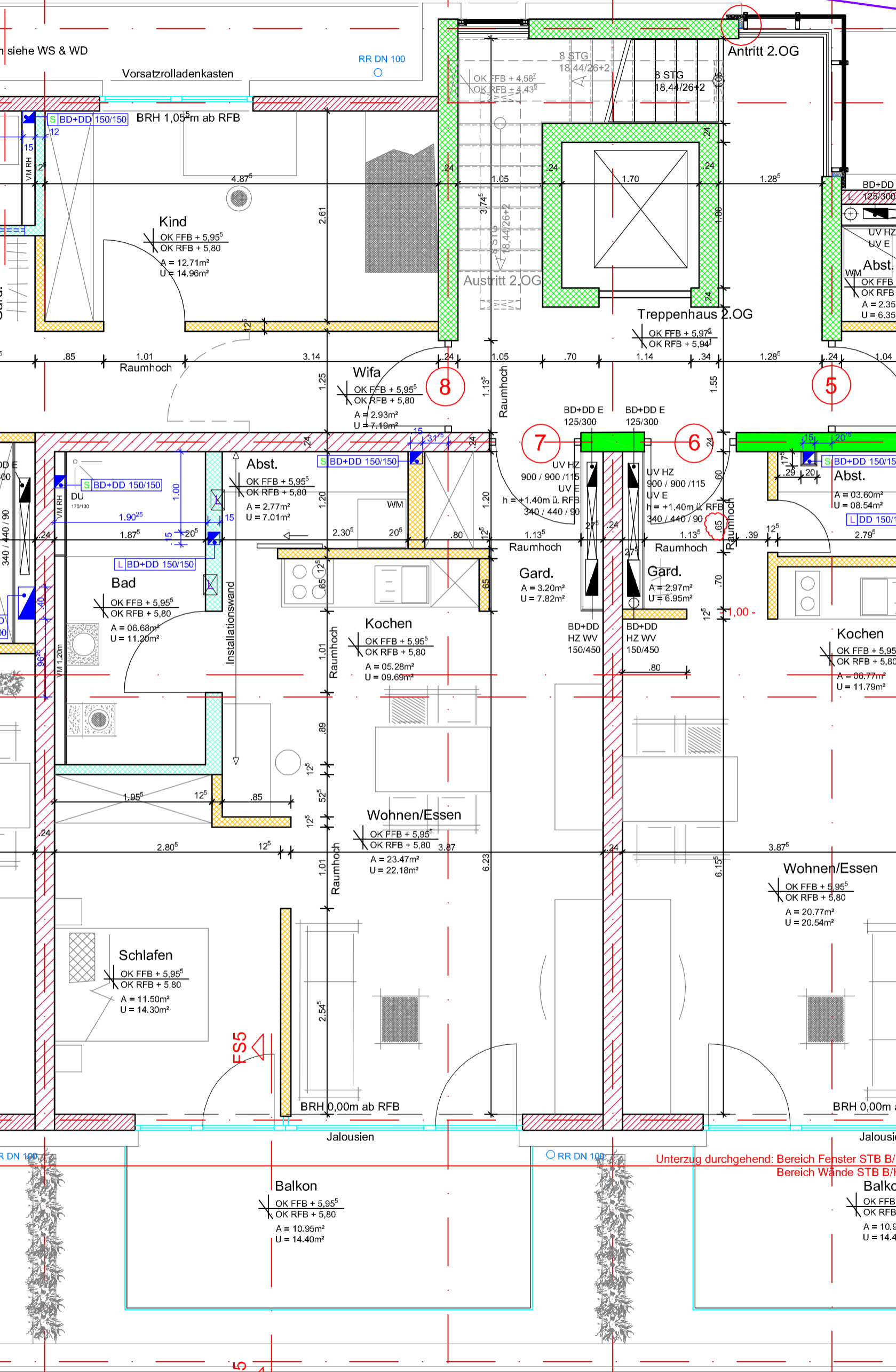


n siehe WS & WD

s. Detailplan
Detail ---



Vorsatzrolladenkasten
BRH 1,05m ab RFB

RR DN 100

8 STG
18,44/26+2
OK FFB + 4,58⁵
OK RFB + 4,43⁵

Antritt 2.OG

Kind
OK FFB + 5,95⁵
OK RFB + 5,80
A = 12,71m²
U = 14,96m²

Austritt 2.OG

Treppenhaus 2.OG
OK FFB + 5,97⁵
OK RFB + 5,94¹

BD+DD
125/300
UV HZ
UV E
Abst.
WM
OK FFB
OK RFB
A = 2,35
U = 6,35

Raumhoch

Wifa
OK FFB + 5,95⁵
OK RFB + 5,80
A = 2,93m²
U = 7,19m²

8

Raumhoch

5

BD+DD E
125/300

7

6

UV HZ
900 / 900 / 115
UV E
h = +1,40m ü. RFB
340 / 440 / 90

UV HZ
900 / 900 / 115
UV E
h = +1,40m ü. RFB
340 / 440 / 90

Abst.
S BD+DD 150/150
A = 0,360m²
U = 0,854m²

Bad
OK FFB + 5,95⁵
OK RFB + 5,80
A = 0,68m²
U = 11,20m²

Abst.
S BD+DD 150/150
OK FFB + 5,95⁵
OK RFB + 5,80
A = 2,77m²
U = 7,01m²

Gard.
A = 3,20m²
U = 7,82m²

Gard.
A = 2,97m²
U = 6,95m²

Kochen
OK FFB + 5,95⁵
OK RFB + 5,80
A = 0,677m²
U = 11,79m²

Kochen
OK FFB + 5,95⁵
OK RFB + 5,80
A = 0,528m²
U = 0,969m²

Wohnen/essen
OK FFB + 5,95⁵
OK RFB + 5,80
A = 23,47m²
U = 22,18m²

Wohnen/essen
OK FFB + 5,95⁵
OK RFB + 5,80
A = 20,77m²
U = 20,54m²

Schlafen
OK FFB + 5,95⁵
OK RFB + 5,80
A = 11,50m²
U = 14,30m²

FS5

BRH 0,00m ab RFB

Jalousien

RR DN 100

Unterzug durchgehend: Bereich Fenster STB B/
Bereich Wände STB B/

Balkon
OK FFB + 5,95⁵
OK RFB + 5,80
A = 10,95m²
U = 14,40m²

Balkon
OK FFB
OK RFB
A = 10,9
U = 14,4

FS5