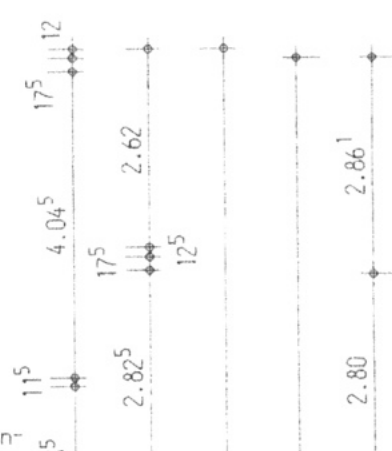
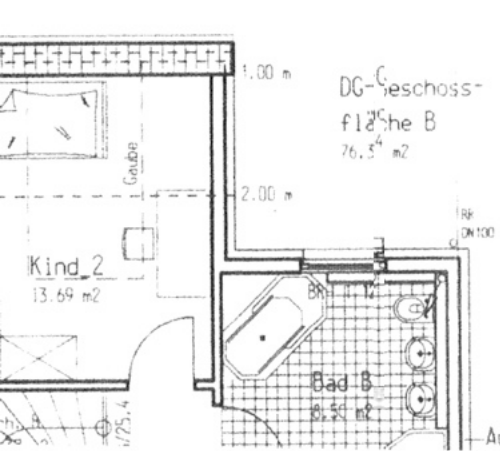
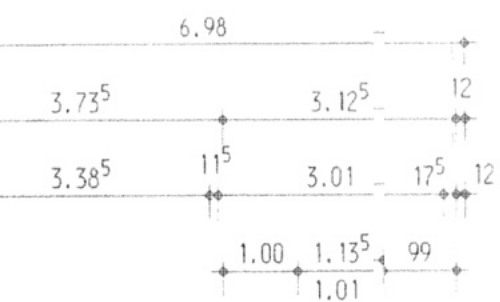


OST - ANSICHT

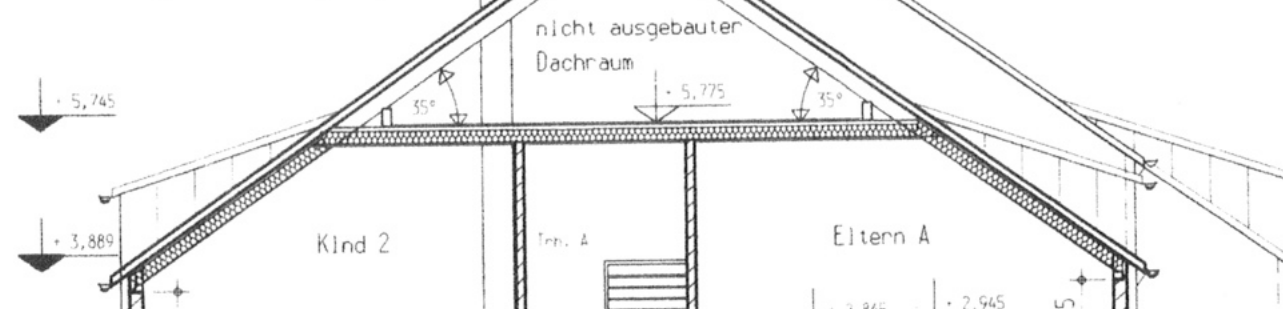
M1: 100

SÜD -

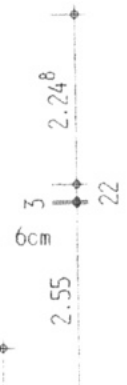
M1: 100

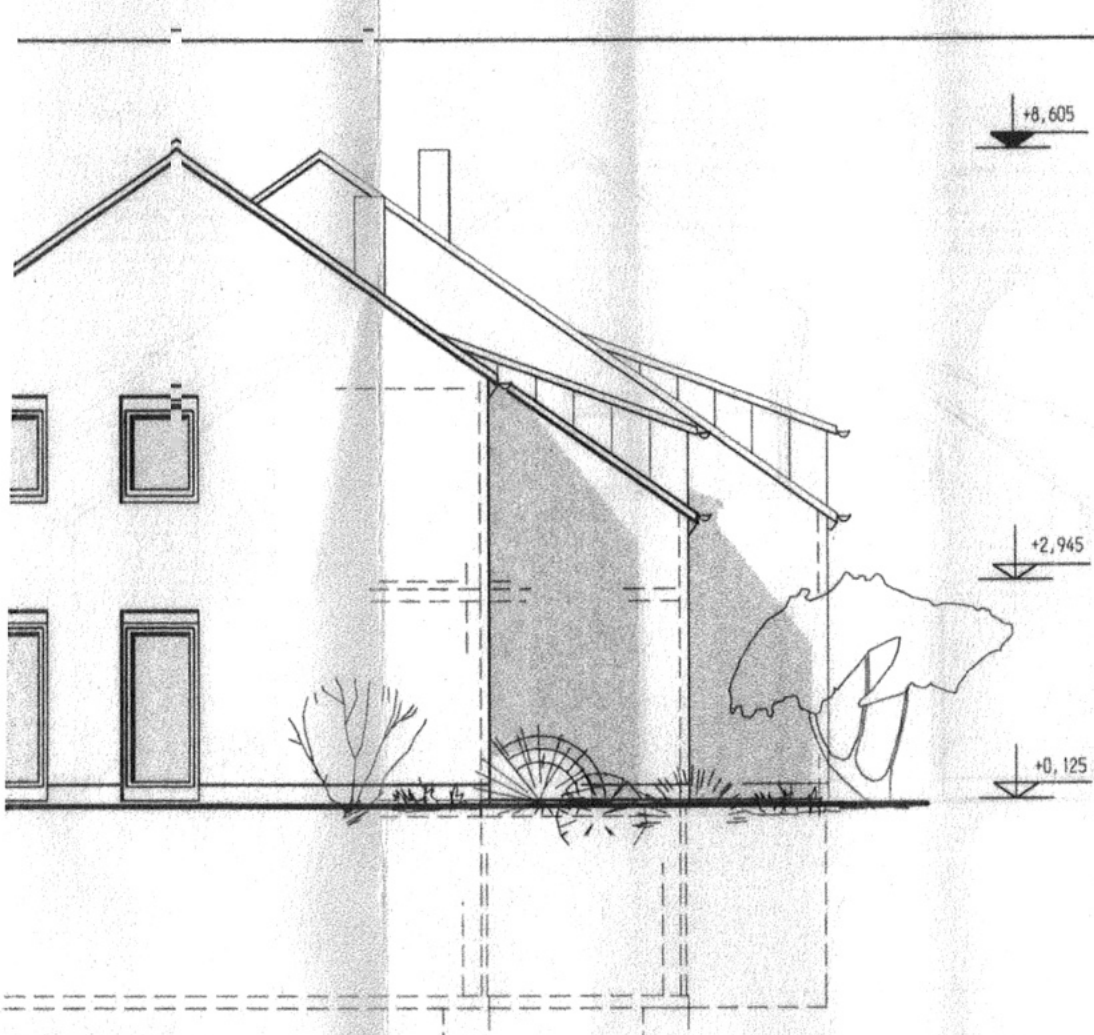


- Dachaufbau:
 Dachziegel
 Traglattung 30/50
 Konterlattung 30/50
 Unterspannbahn
 Sparren (n. Statik)
 Wärmedämmung, 160mm
 Lattung
 Gk-Verkleidung, 12,5mm

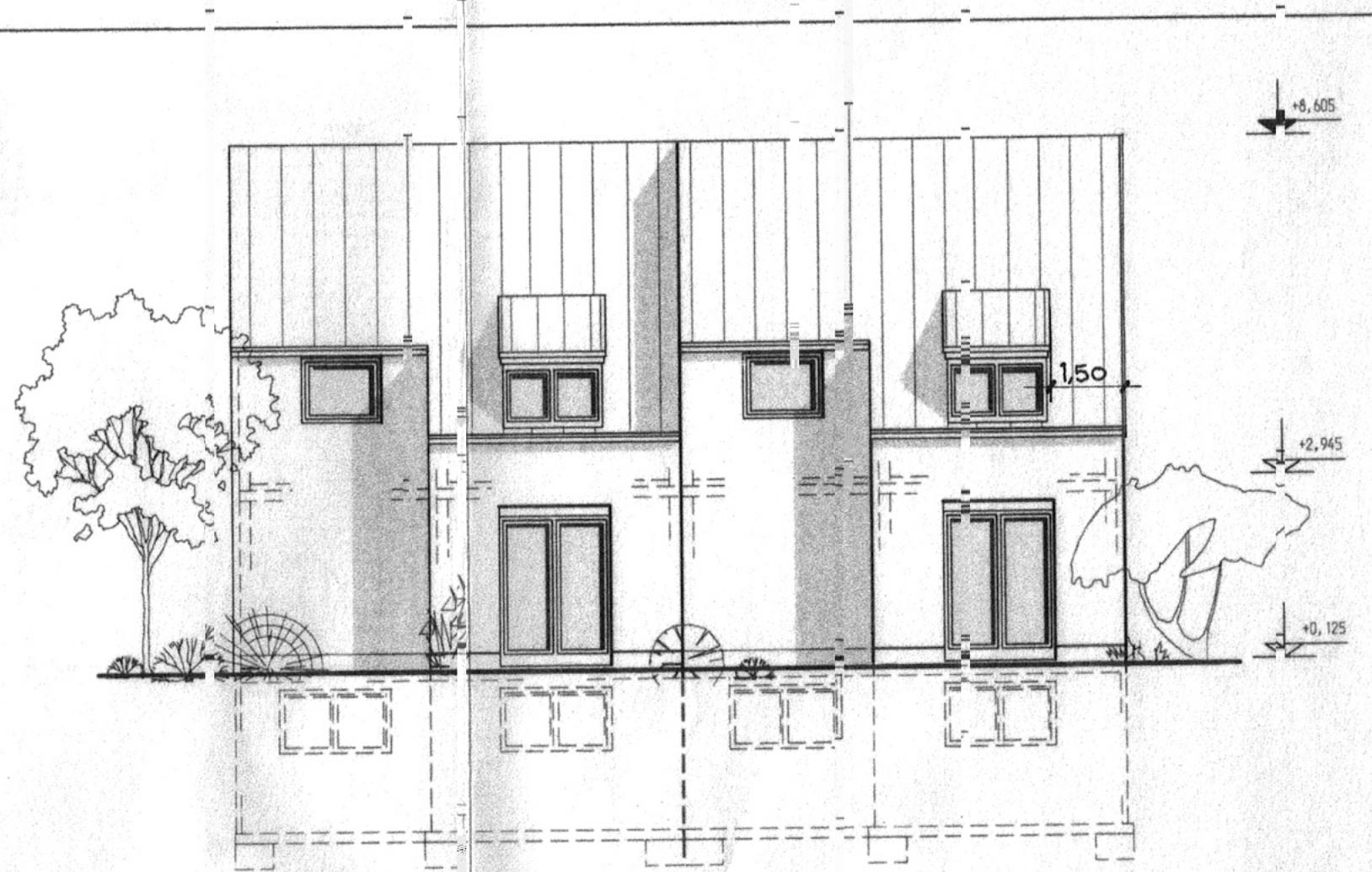


- Fussbodenaufbau:
 Belag, d=1cm
 Schwimm. Estrich, 6cm
 PE-Folie
 Dämmung, 5cm
 StB-Decke
 B25, d=14cm



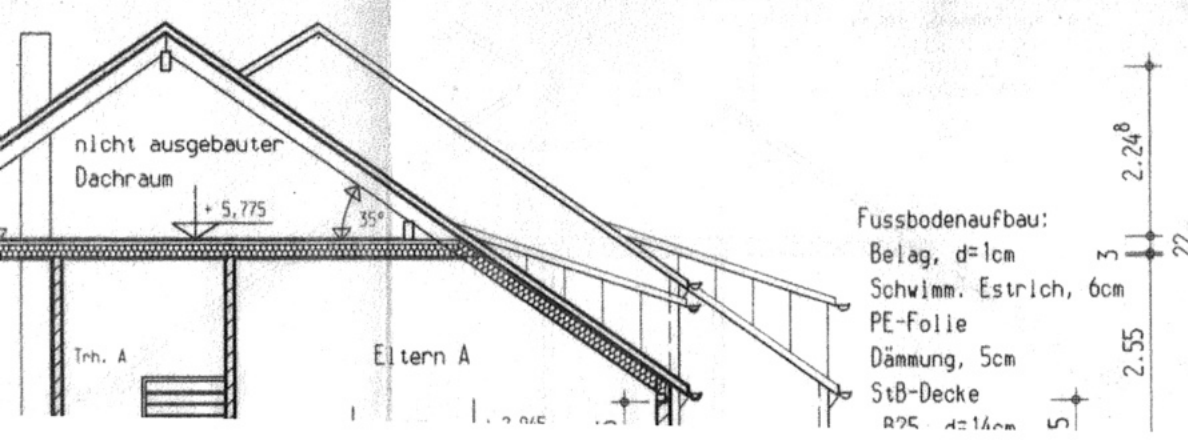


ANSICHT

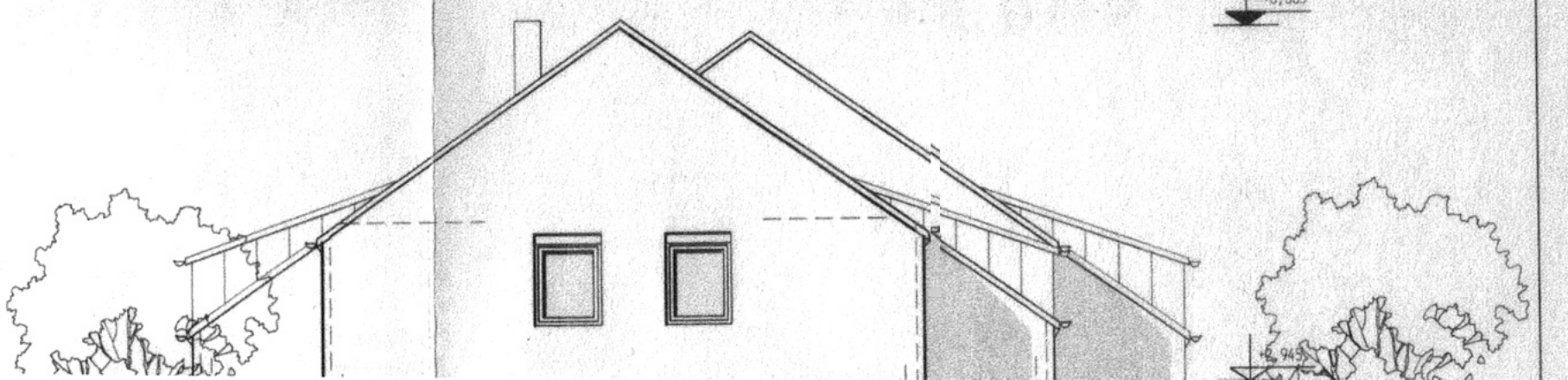


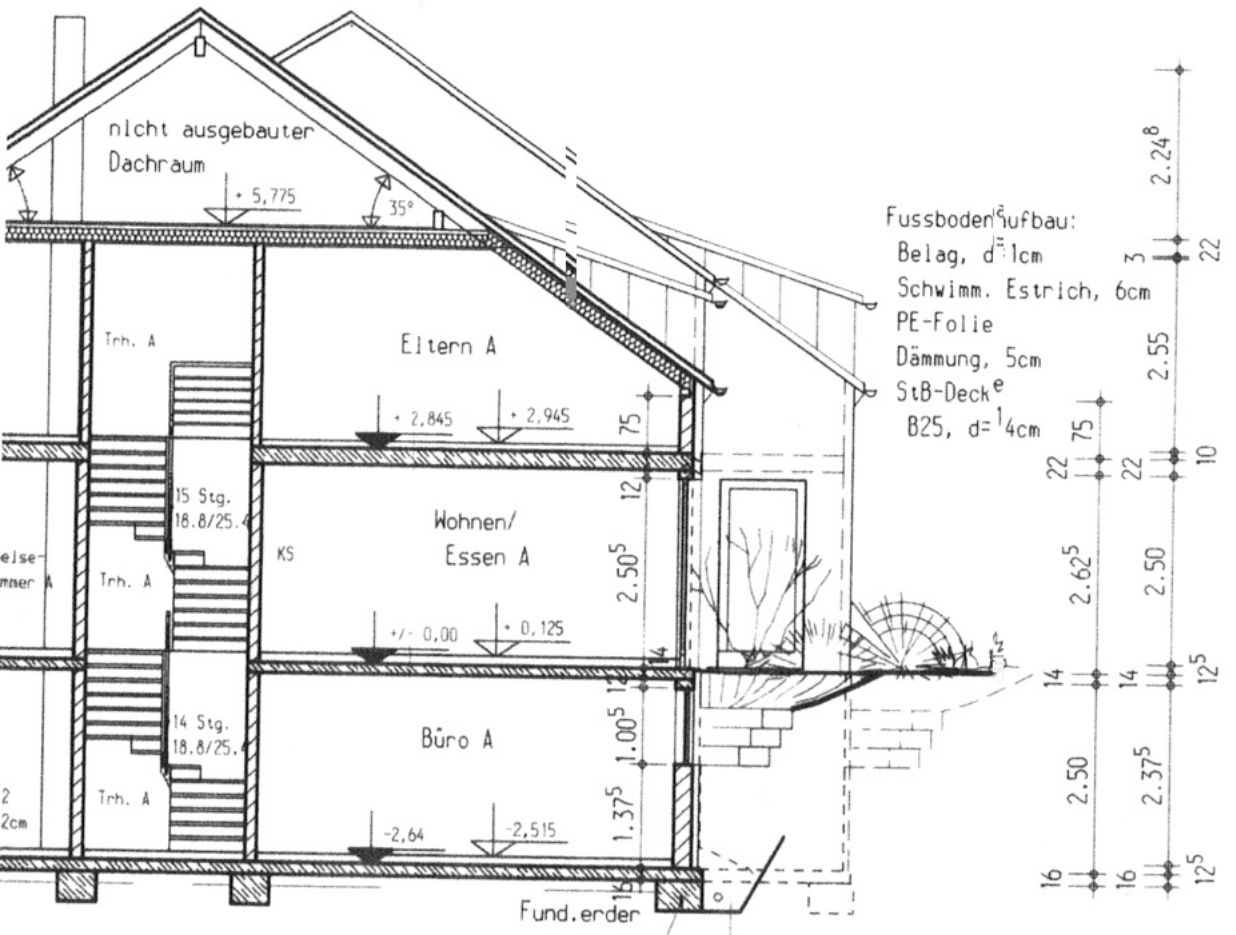
SÜD - ANSICHT

M 1: 100

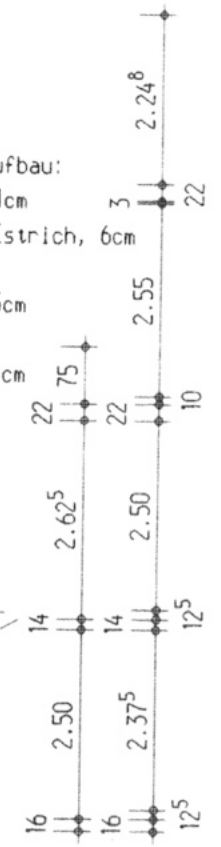


Fussbodenaufbau:
 Belag, d=1cm 3
 Schwimm. Estrich, 6cm 22
 PE-Folie
 Dämmung, 5cm
 StB-Decke 5
 2.24⁰
 2.55





Fussboden^eufbau:
 Belag, d=1cm
 Schwimm. Estrich, 6cm
 PE-Folie
 Dämmung, 5cm
 StB-Decke
 B25, d=14cm



Bodenaufbau: umlaufd.
 Belag, 1cm
 Schwimm. Estrich, 5cm
 PE-Folie
 Wärmedämmung, 6cm
 hor. Abdichtg.
 (PVC, d=1,2mm)
 StB-Bodenplatte,
 B25, d=16cm
 Sickerpackung, 15cm
 Schutzvlies
 Sickerpackg.

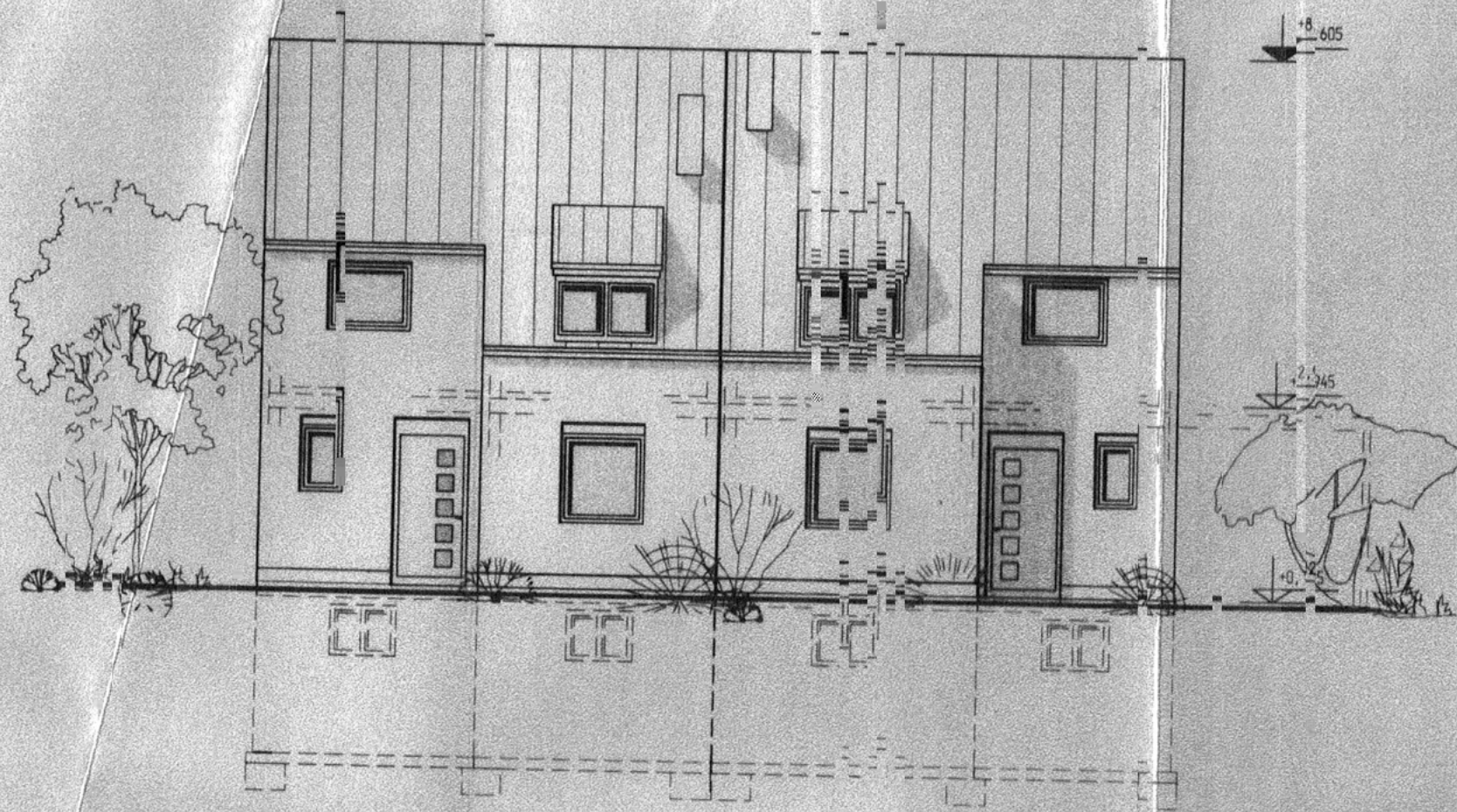
T A - A



WEST - ANSICHT

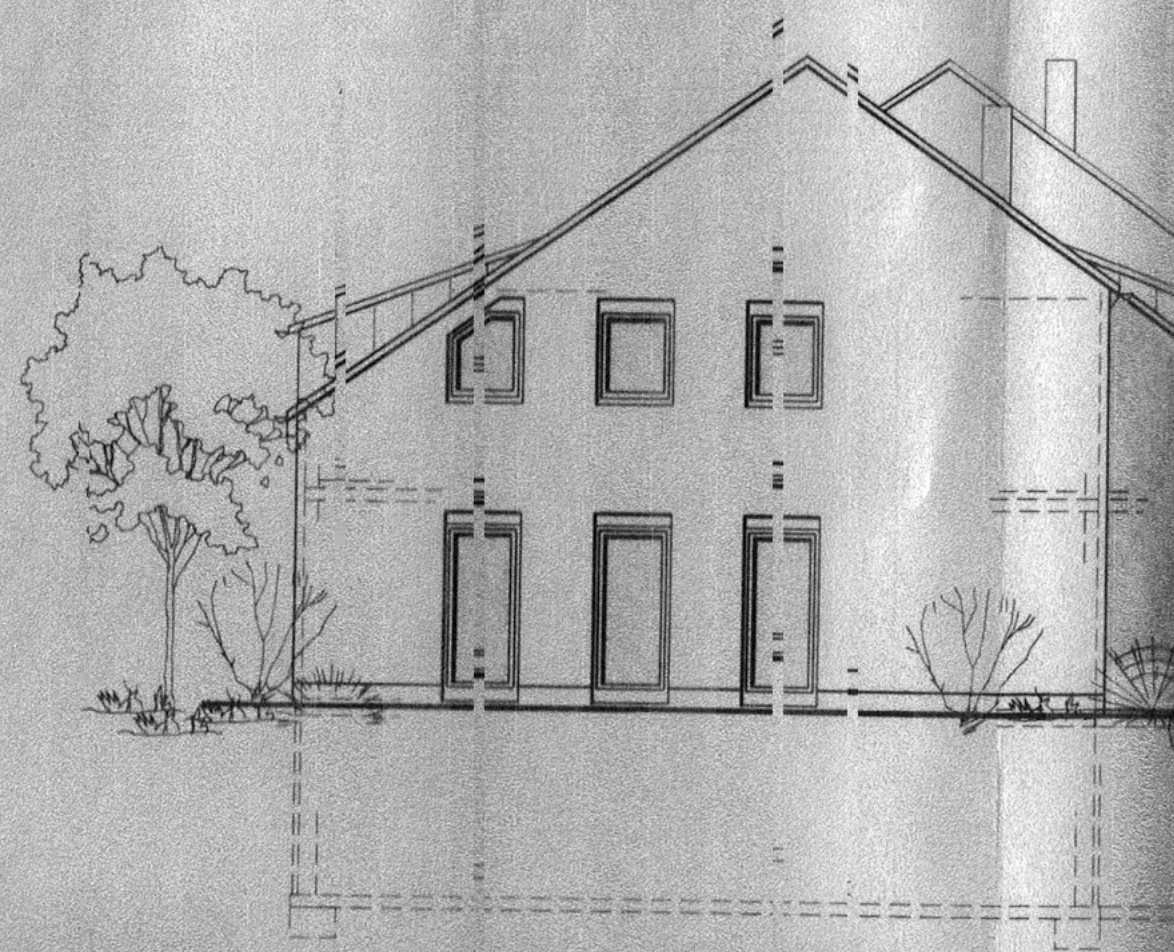
M 1 : 100

Einleitung
 in vorh.



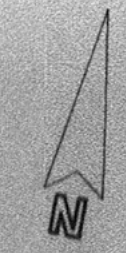
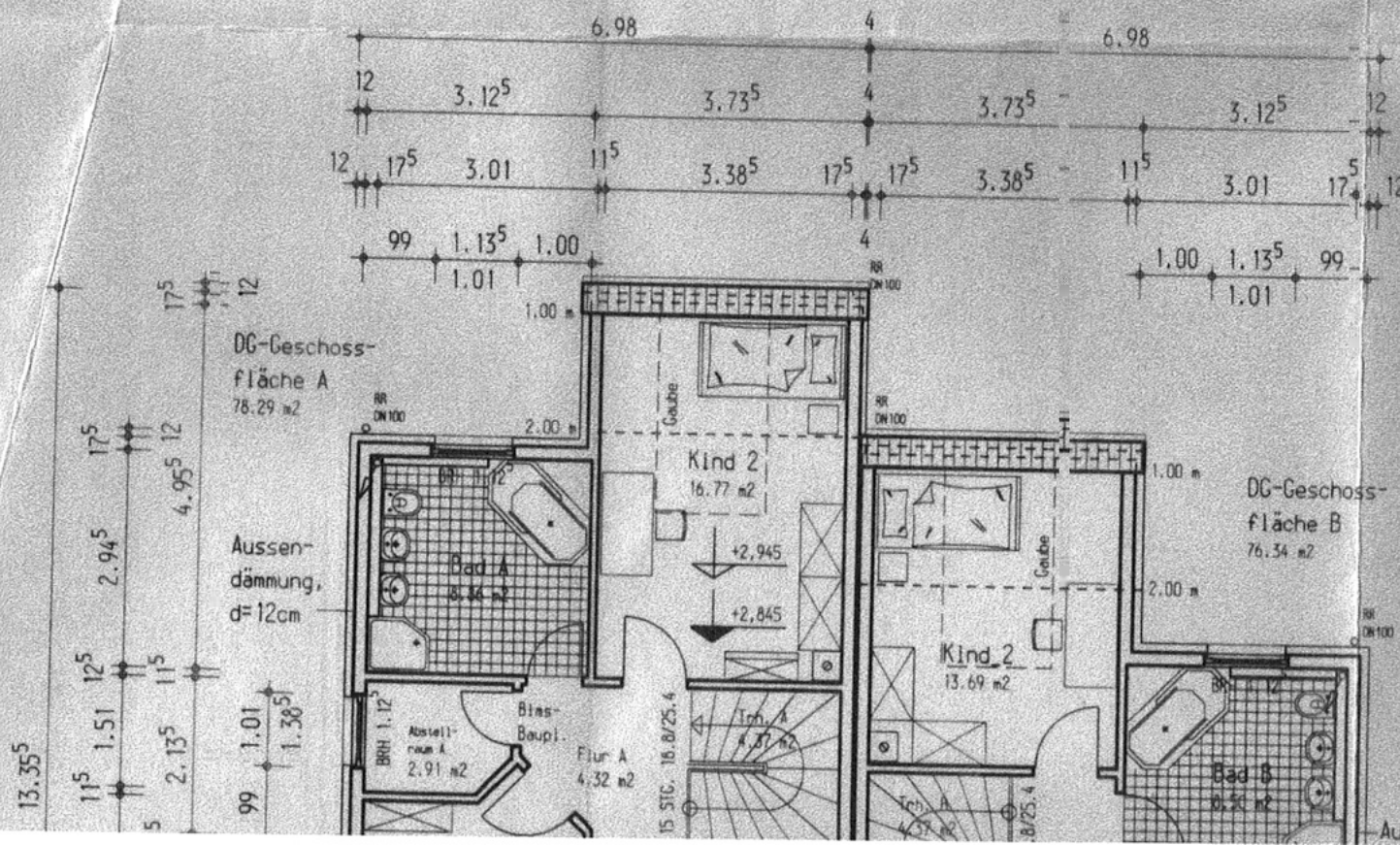
NORD - ANSICHT

M 1: 100

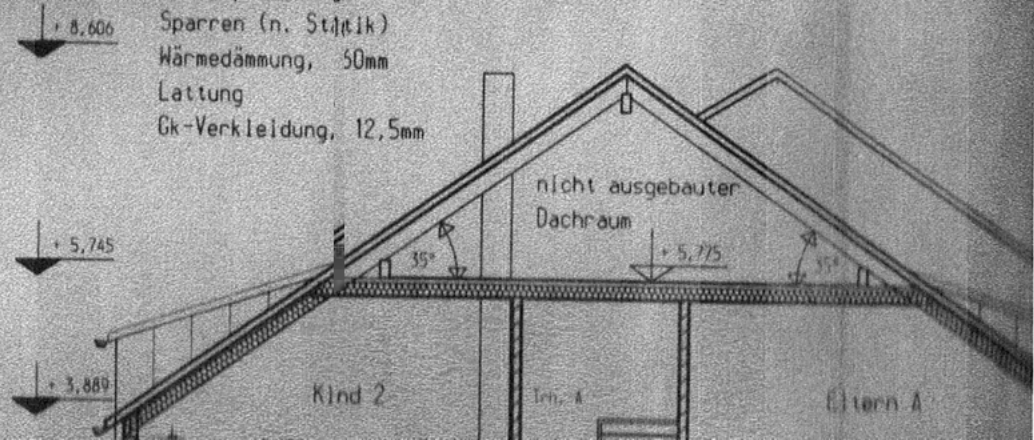


OST - ANSICHT

M 1: 100



Dachaufbau:
 Dachziegel /
 Traglattung 30/50
 Konterlattung 0/50
 Unterspannbahn
 Sparren (n. Statik)
 Wärmedämmung, 50mm
 Lattung
 Gk-Verkleidung, 12,5mm



Drainage
0,0, 0,5%
alle

Fund.
n. Statik

Bodenaufbau: umlaufd.
Belag, 1cm
Schwimm. Estrich, 5cm
PE-Folie
Wärmedämmung, 6cm
hor. Abdichtg.
(PVC, d=1,2mm)
StB-Bodenplatte,
B25, d=16cm
Sickerpackung, 15cm

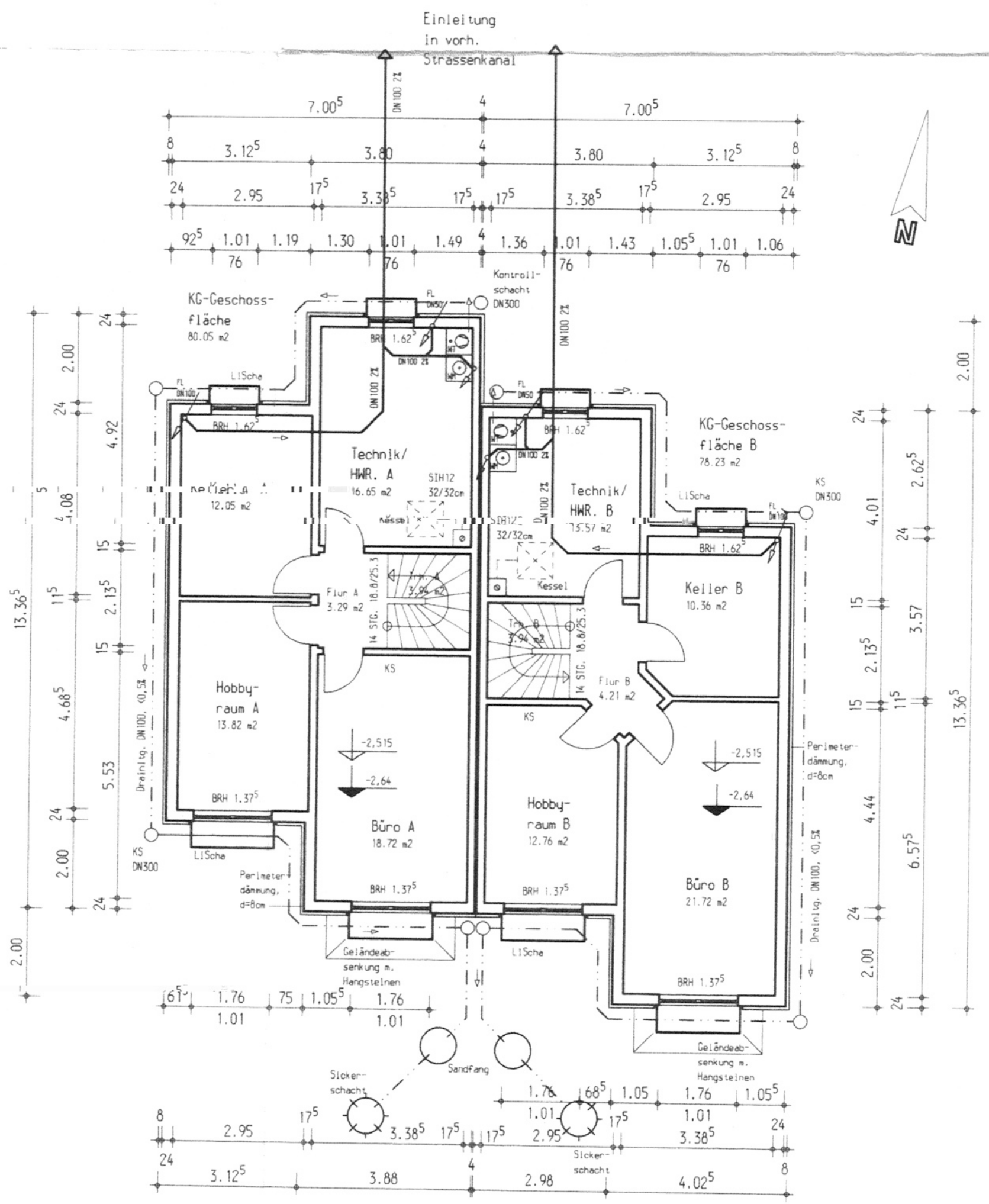
Schutzvlies
Sickerpackg.

SCHNITT A - A

M1: 100

WEST

M1: 100

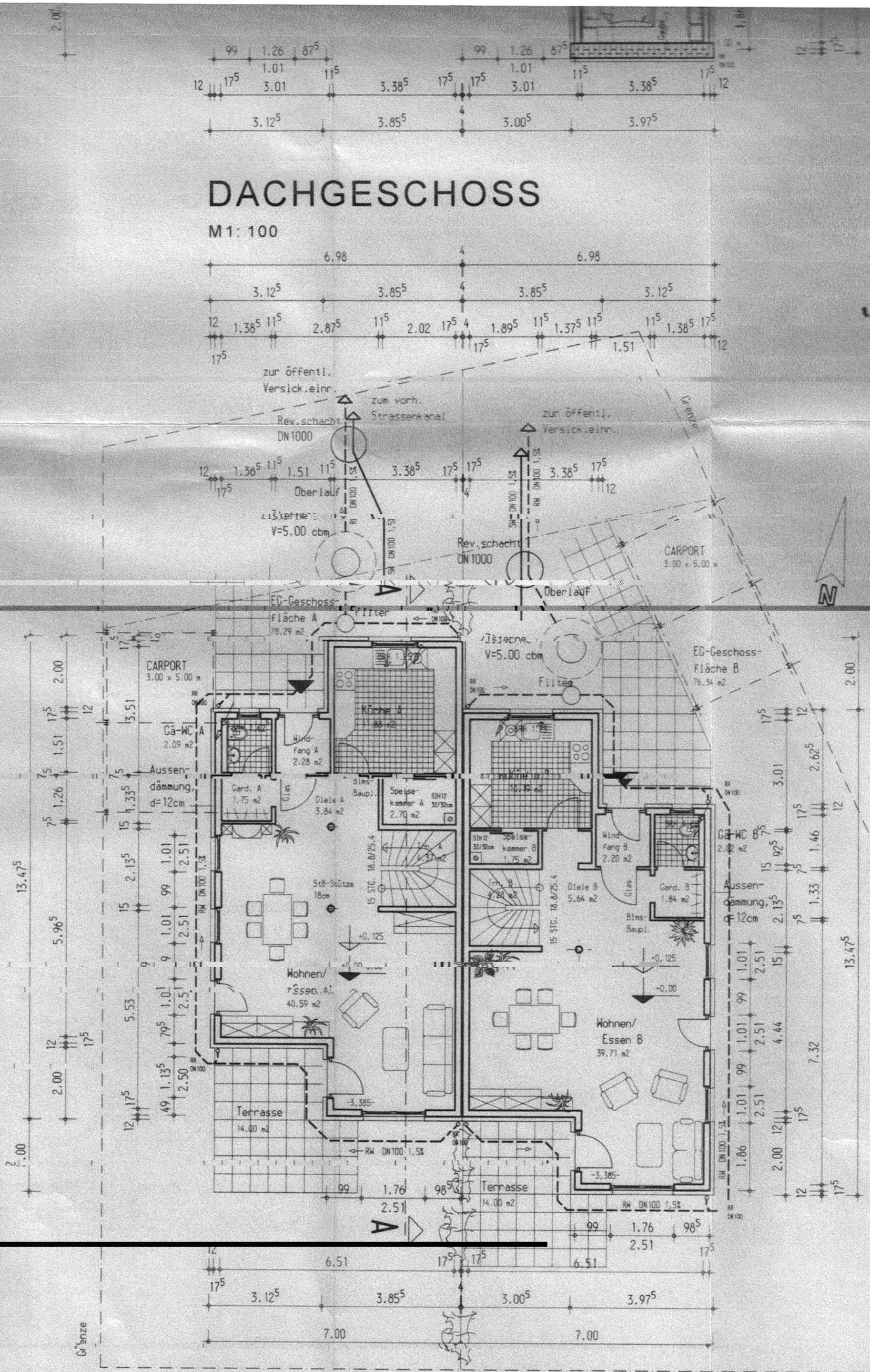


KELLERGESCHOSS

M1: 100

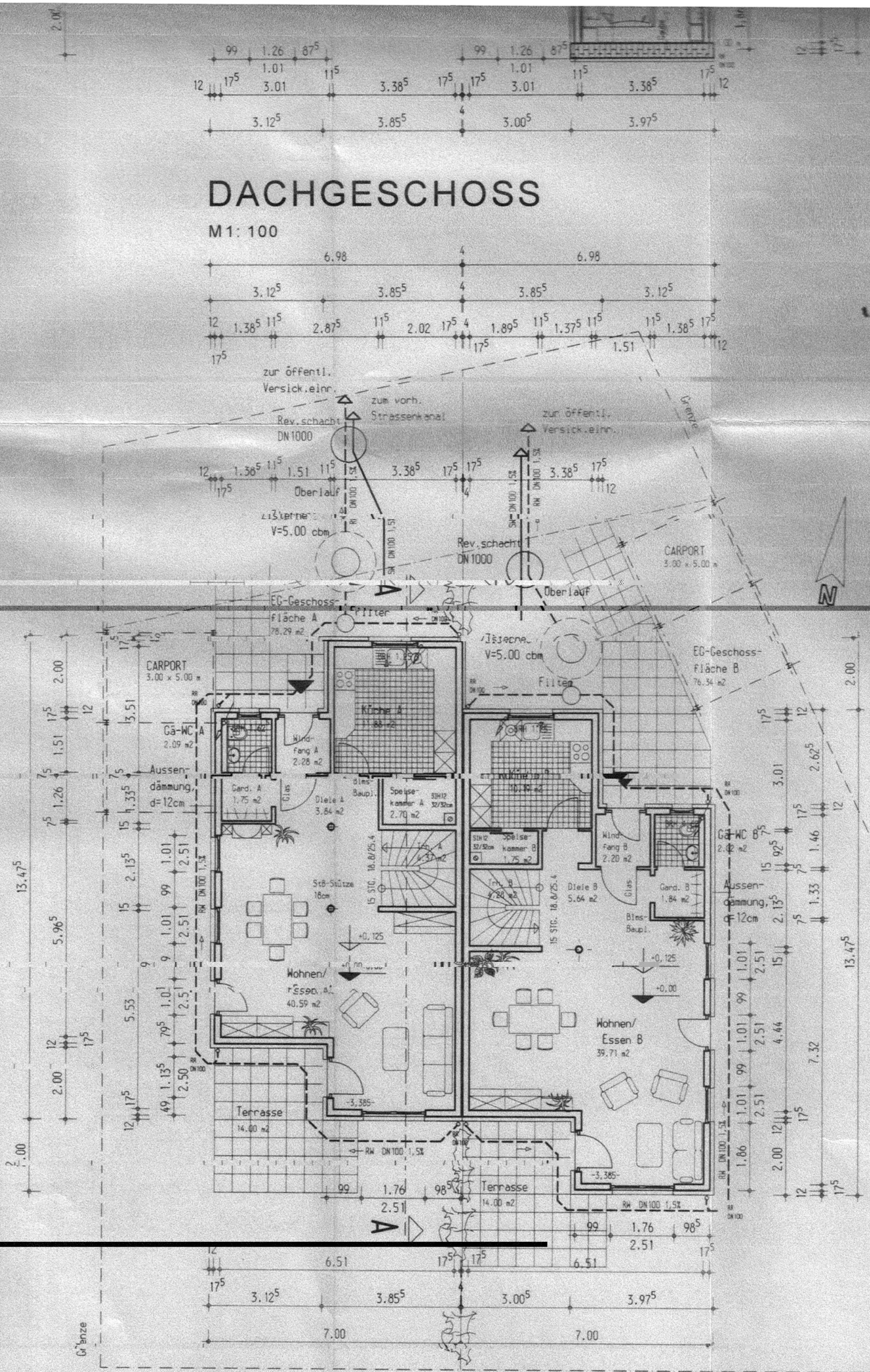
DACHGESCHOSS

M1: 100



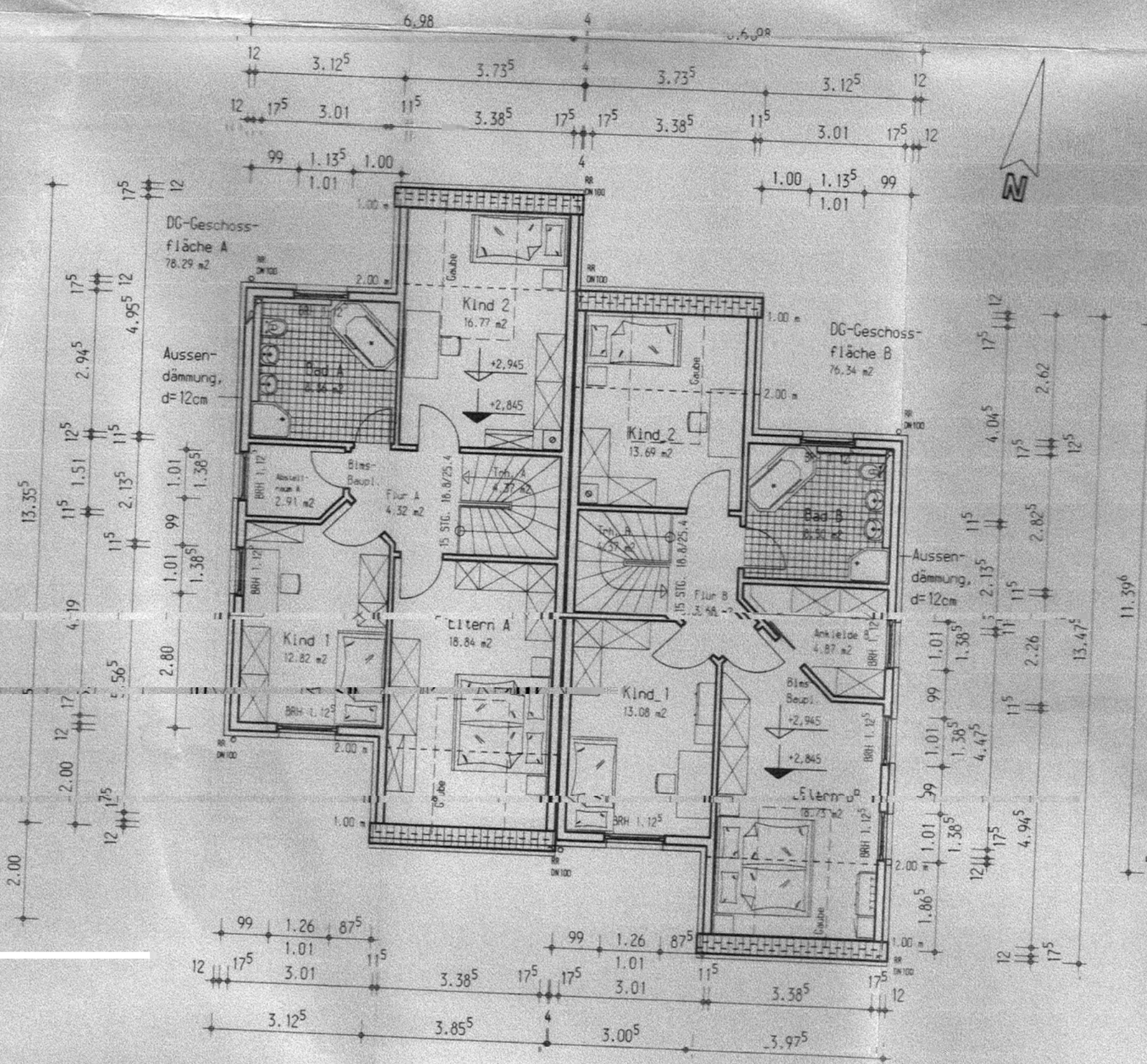
ERDGESCHOSS

M1: 100



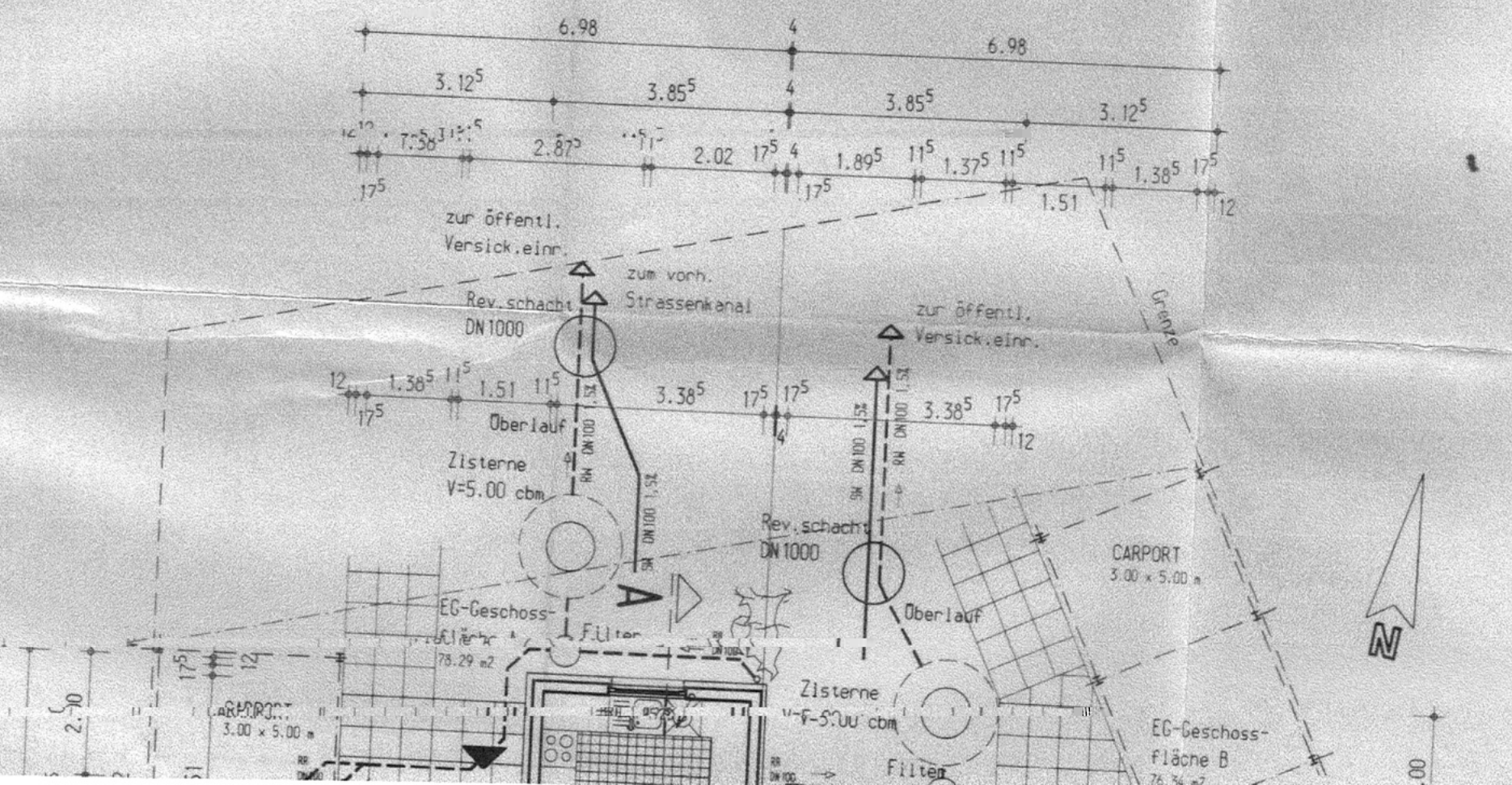
NORD - ANSICHT

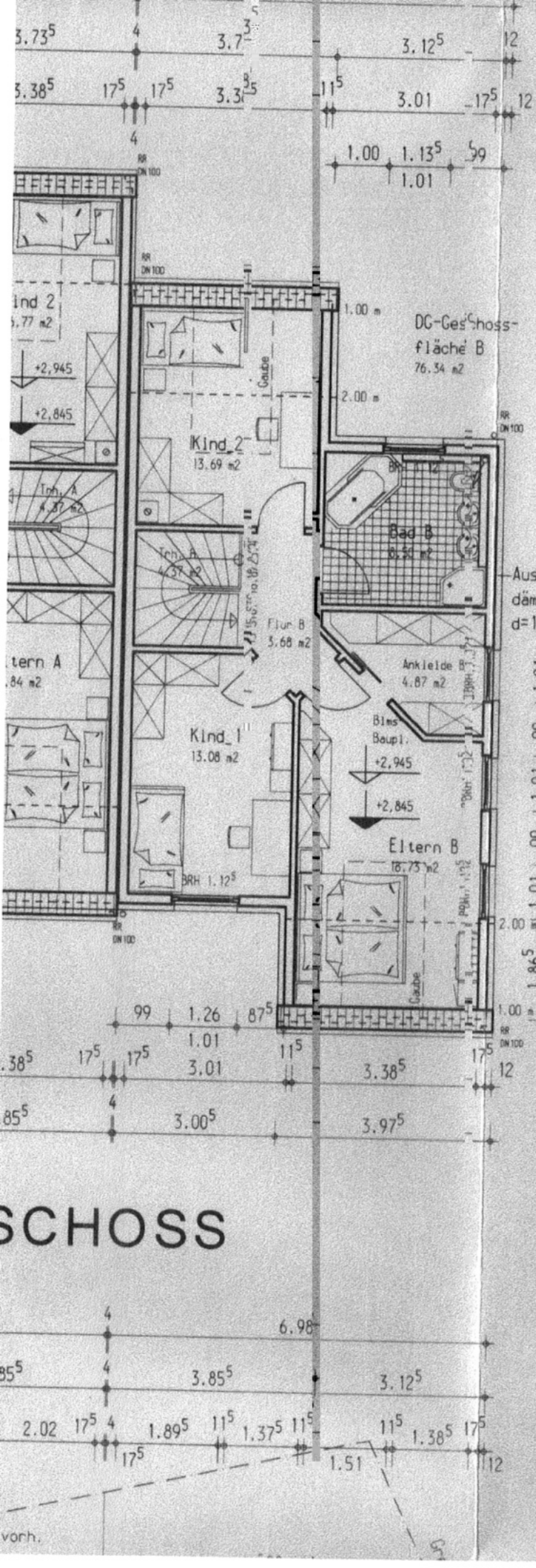
M1: 100



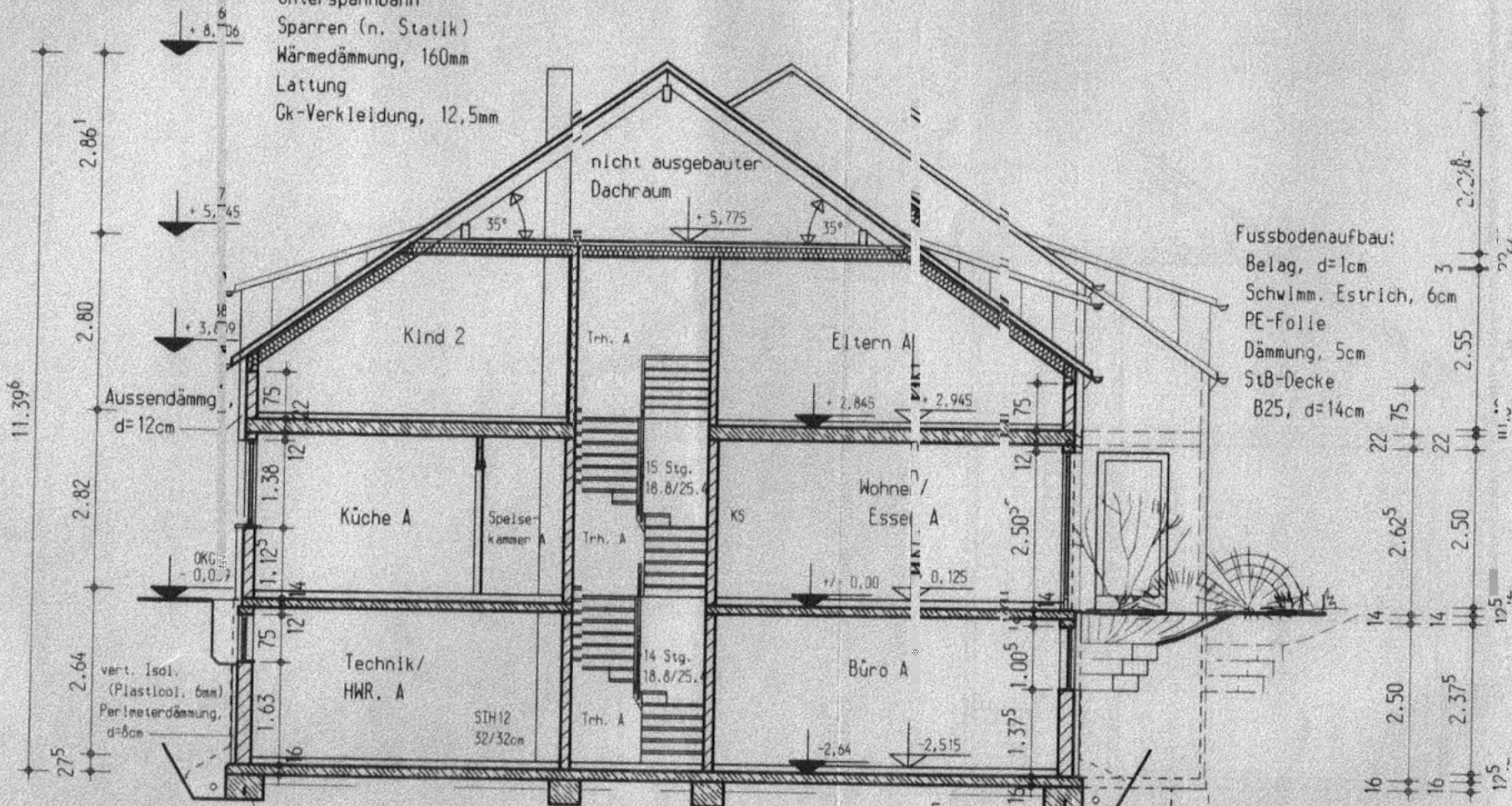
DACHGESCHOSS

M1: 100





Dachaufbau:
 Dachziegel
 Traglattung 30/50
 Konterlattung 30/50
 Unterspannbahn
 Sparren (n. Statik)
 Wärmedämmung, 160mm
 Lattung
 Gk-Verkleidung, 12,5mm



Fussbodenaufbau:
 Belag, d=1cm
 Schwimm. Estrich, 6cm
 PE-Folie
 Dämmung, 5cm
 StB-Decke
 B25, d=14cm

Bodenaufbau: umlaufd.
 Belag, 1cm
 Schwimm. Estrich, 5cm
 PE-Folie
 Wärmedämmung, 6cm
 hor. Abdichtg.
 (PVC, d=1,2mm)
 StB-Bodenplatte,
 B25, d=16cm
 Sickerpackung, 15cm

SCHNITT A - A
 M1: 100

SCHLOSS

Einführung