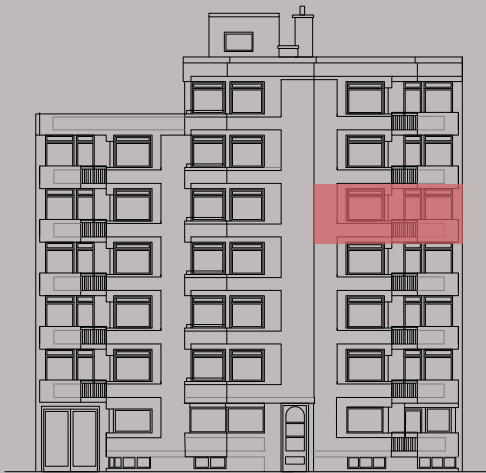


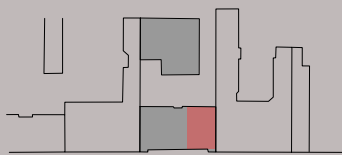
# VORDERHAUS 4.OBERGESCHOSS

## WE 12 / 4.OBERGESCHOSS

Küche	7.79 m <sup>2</sup>
Zimmer 1	22.04 m <sup>2</sup>
Zimmer 2	15.41 m <sup>2</sup>
Zimmer 3	12.67 m <sup>2</sup>
Zimmer 4	8.72 m <sup>2</sup>
Bad	5.63 m <sup>2</sup>
Flur	12.71 m <sup>2</sup>
WC	1.38 m <sup>2</sup>
AR	1.75 m <sup>2</sup>
Loggia	3.02 m <sup>2</sup>
<b>Gesamt</b>	<b>91.51 m<sup>2</sup></b>



Straßenansicht



Eislebener Straße

Lageplan

