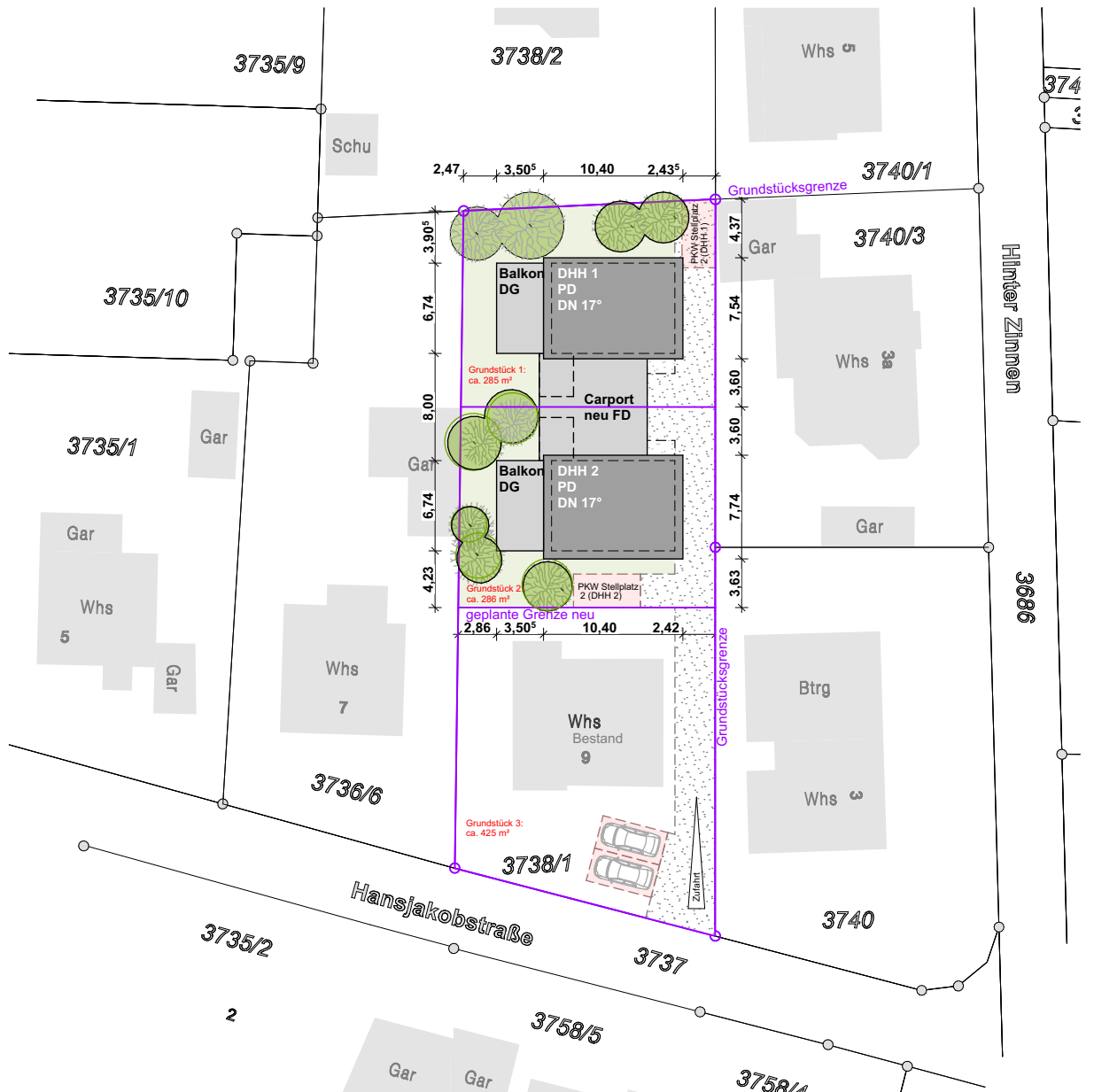
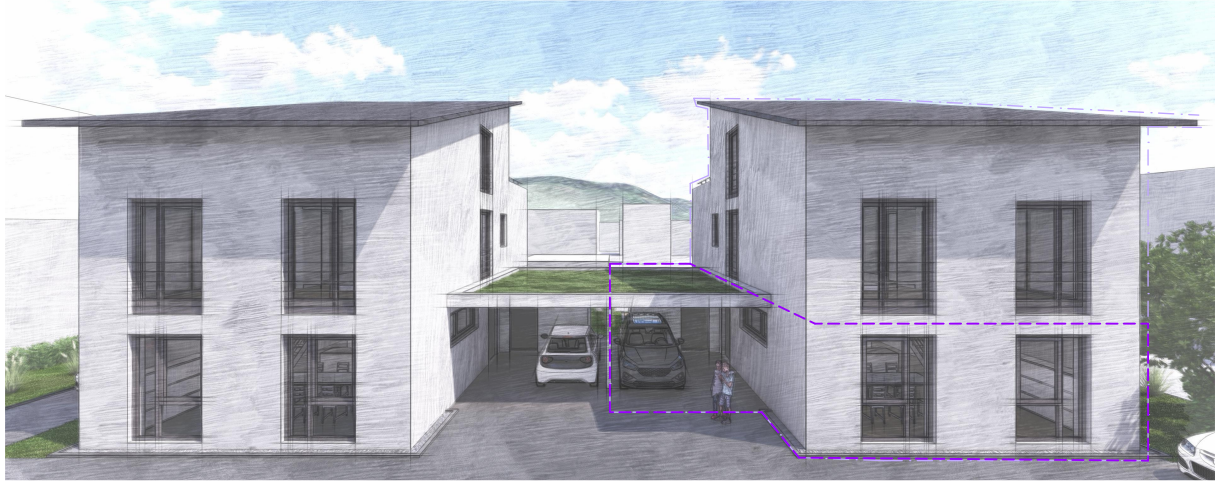


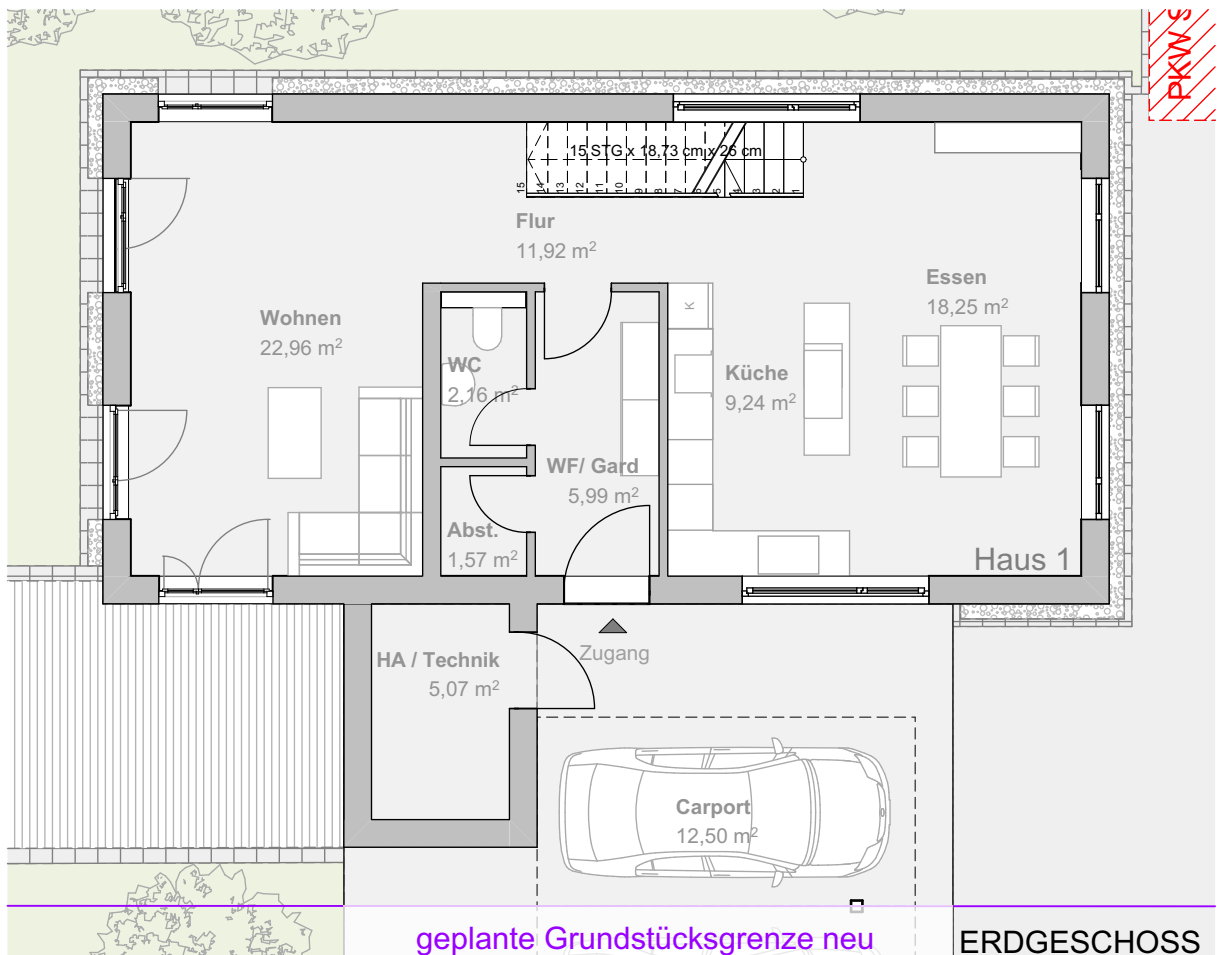
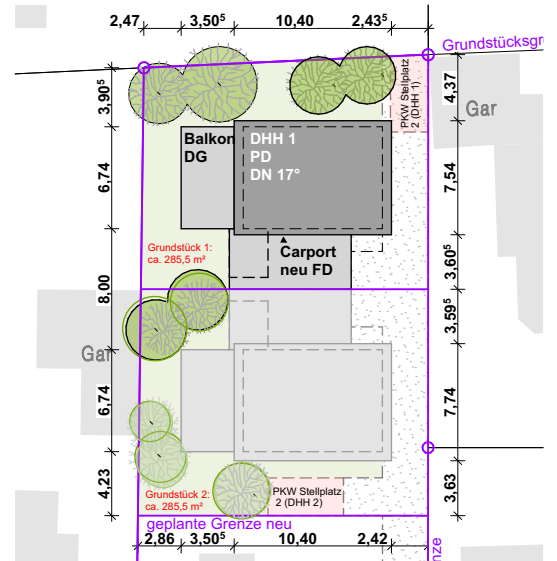
# 2 BAUGRUNDSTÜCKE FÜR DEN NEUBAU EINES DOPPELHAUSES IN STEISSLINGEN

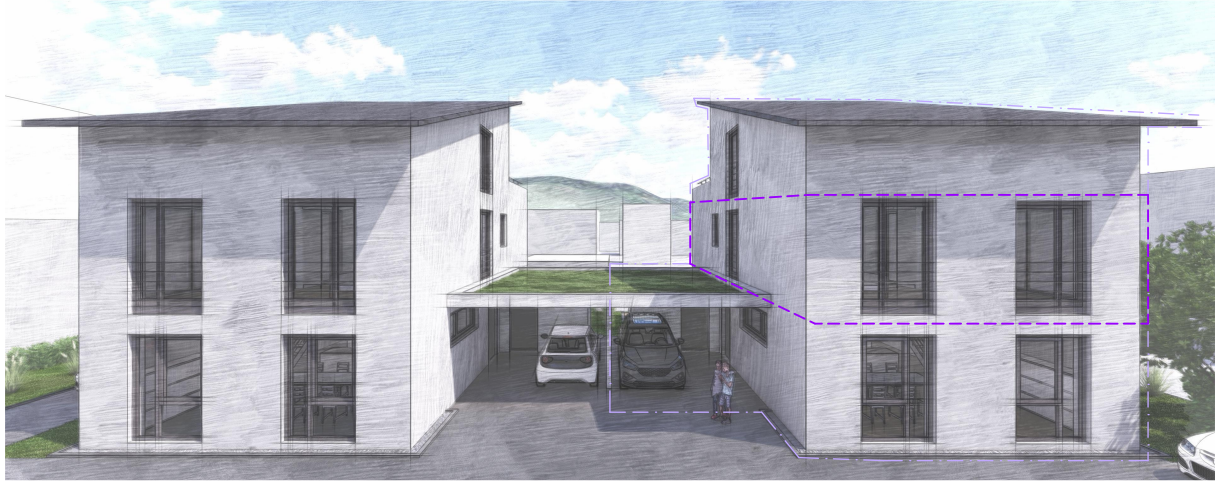




### HAUS 1 WOHNFLÄCHE

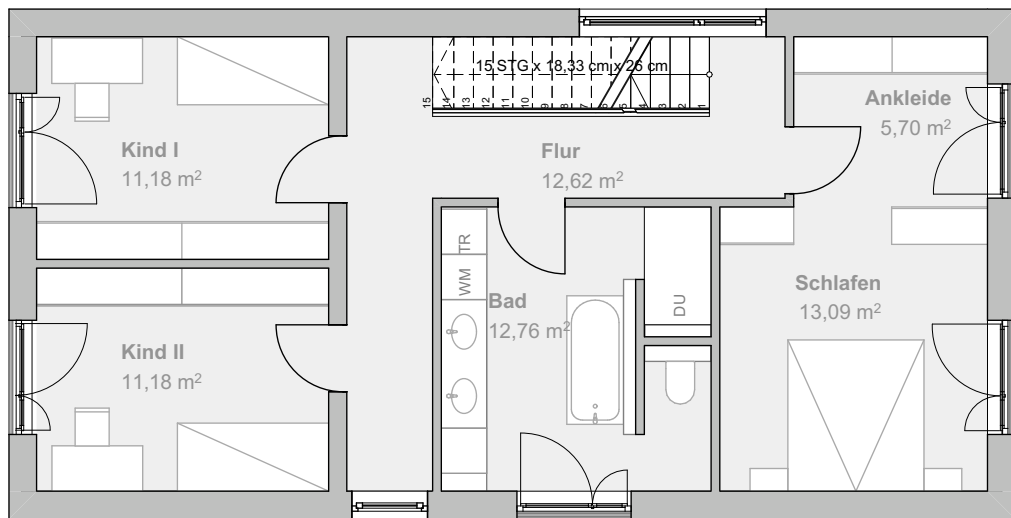
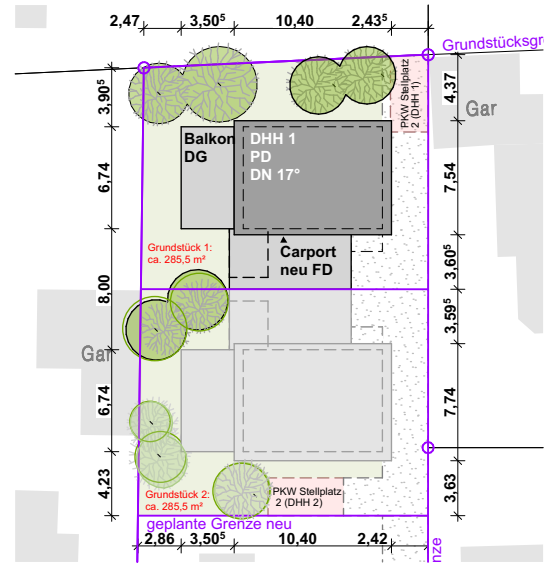
Wohnen	22,96 m <sup>2</sup>
Küche	9,24 m <sup>2</sup>
Essen	18,25 m <sup>2</sup>
WF/ Gard	5,99 m <sup>2</sup>
Abst.	1,57 m <sup>2</sup>
WC.	2,16 m <sup>2</sup>
HA/ Technik	5,07 m <sup>2</sup>
<b>Gesamt</b>	<b>65,24 m<sup>2</sup></b>





## HAUS 1 WOHNFLÄCHE

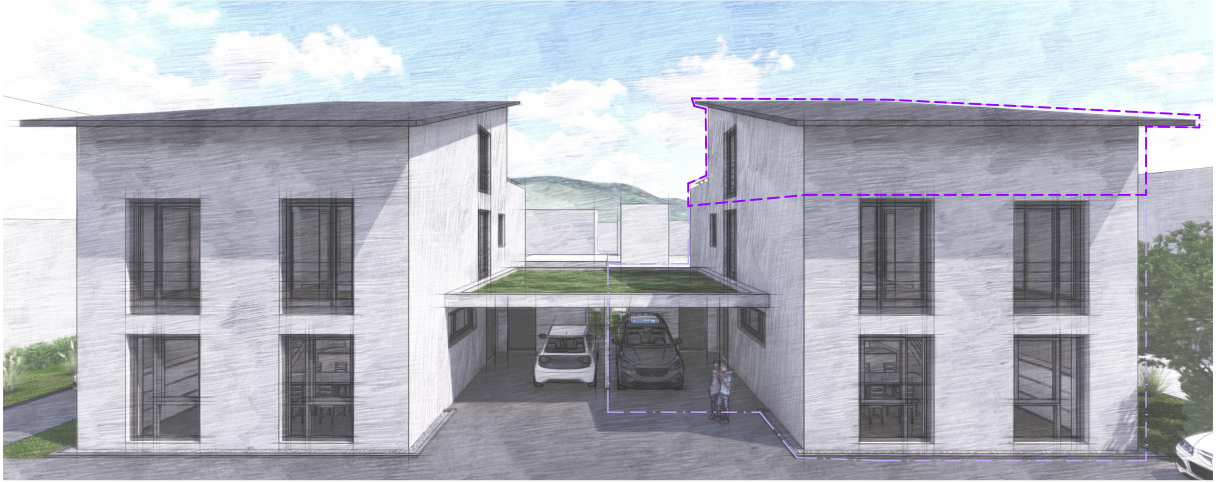
Schlafen	13,09 m <sup>2</sup>
Ankleide	5,70 m <sup>2</sup>
Bad	12,76 m <sup>2</sup>
Kind I	11,18 m <sup>2</sup>
Kind II	11,18 m <sup>2</sup>
Flur	12,62 m <sup>2</sup>
<b>Gesamt</b>	<b>66,53 m<sup>2</sup></b>



OBERGESCHOSS

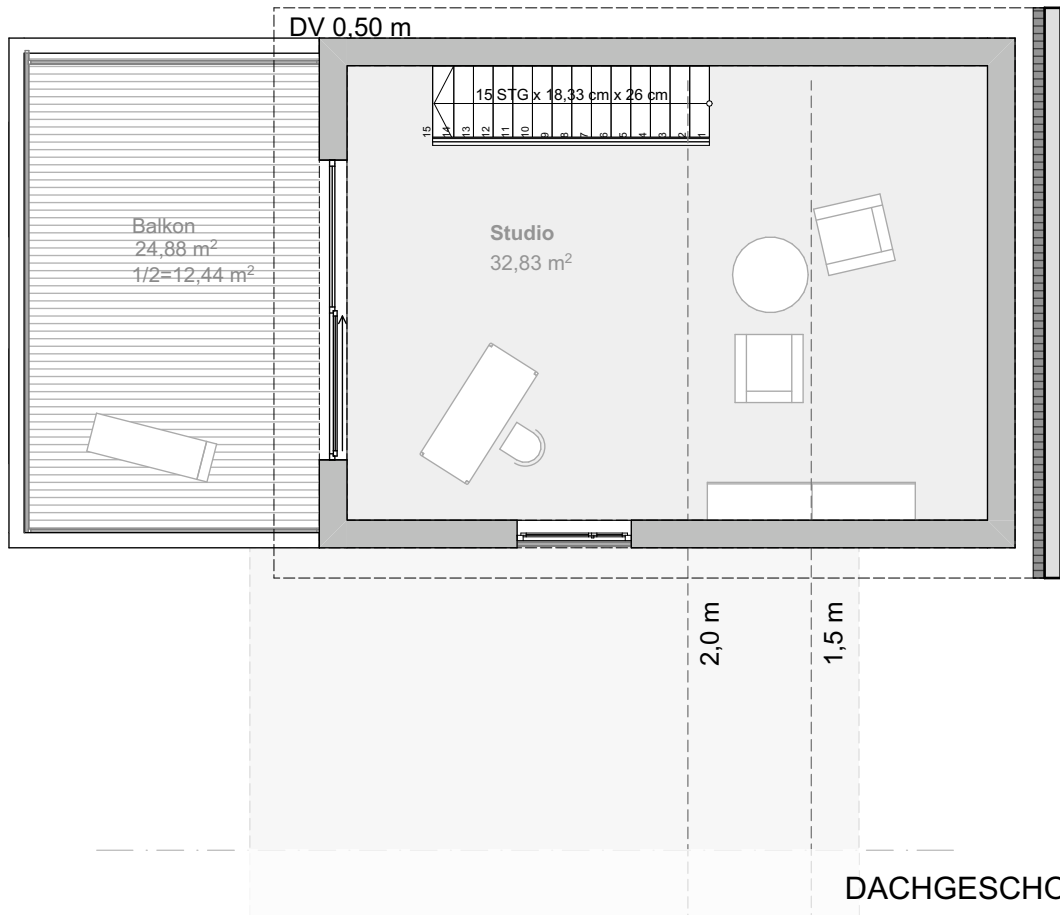
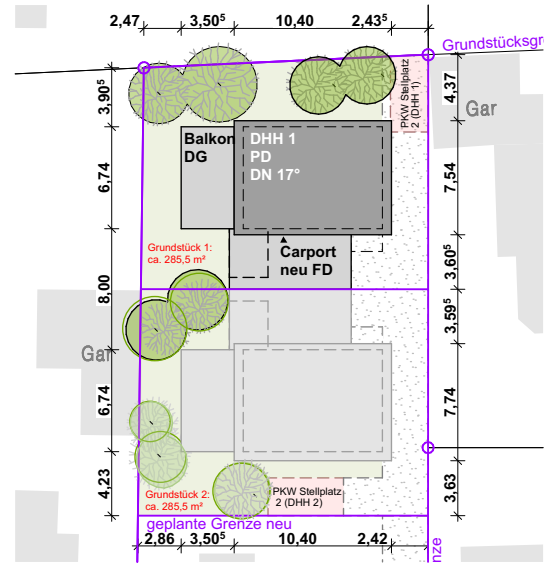




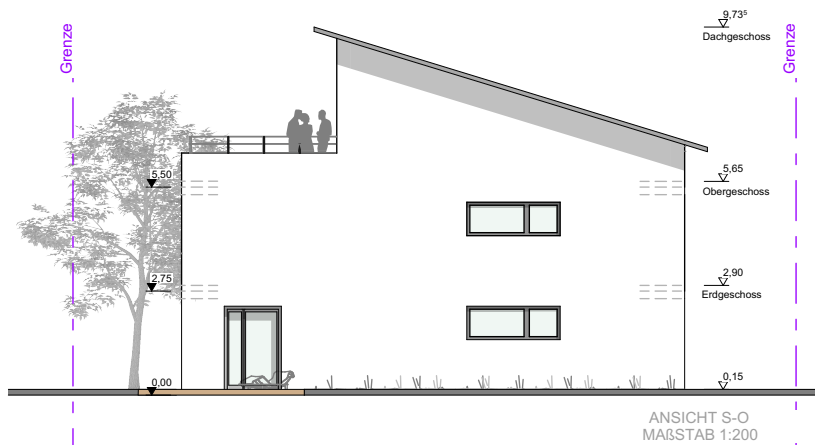


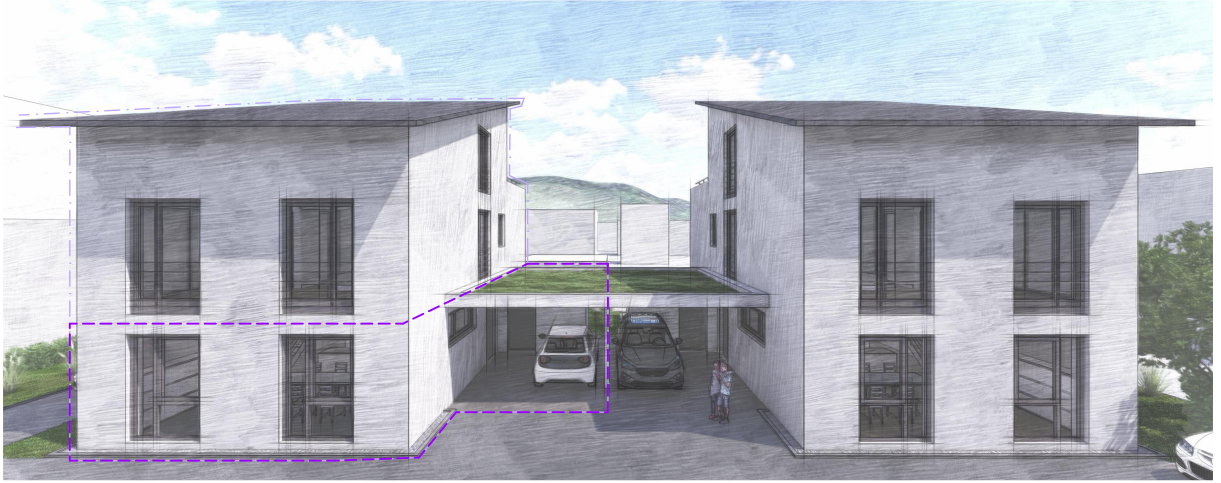
**HAUS 1**  
**WOHNFLÄCHE**

Studio	32,83 m <sup>2</sup>
Balkon (24,88 m <sup>2</sup> X 0,5)	12,44 m <sup>2</sup>
<b>Gesamt</b>	<b>45,27 m<sup>2</sup></b>



Haus 1  
Wohnfläche  
177,04 m<sup>2</sup>

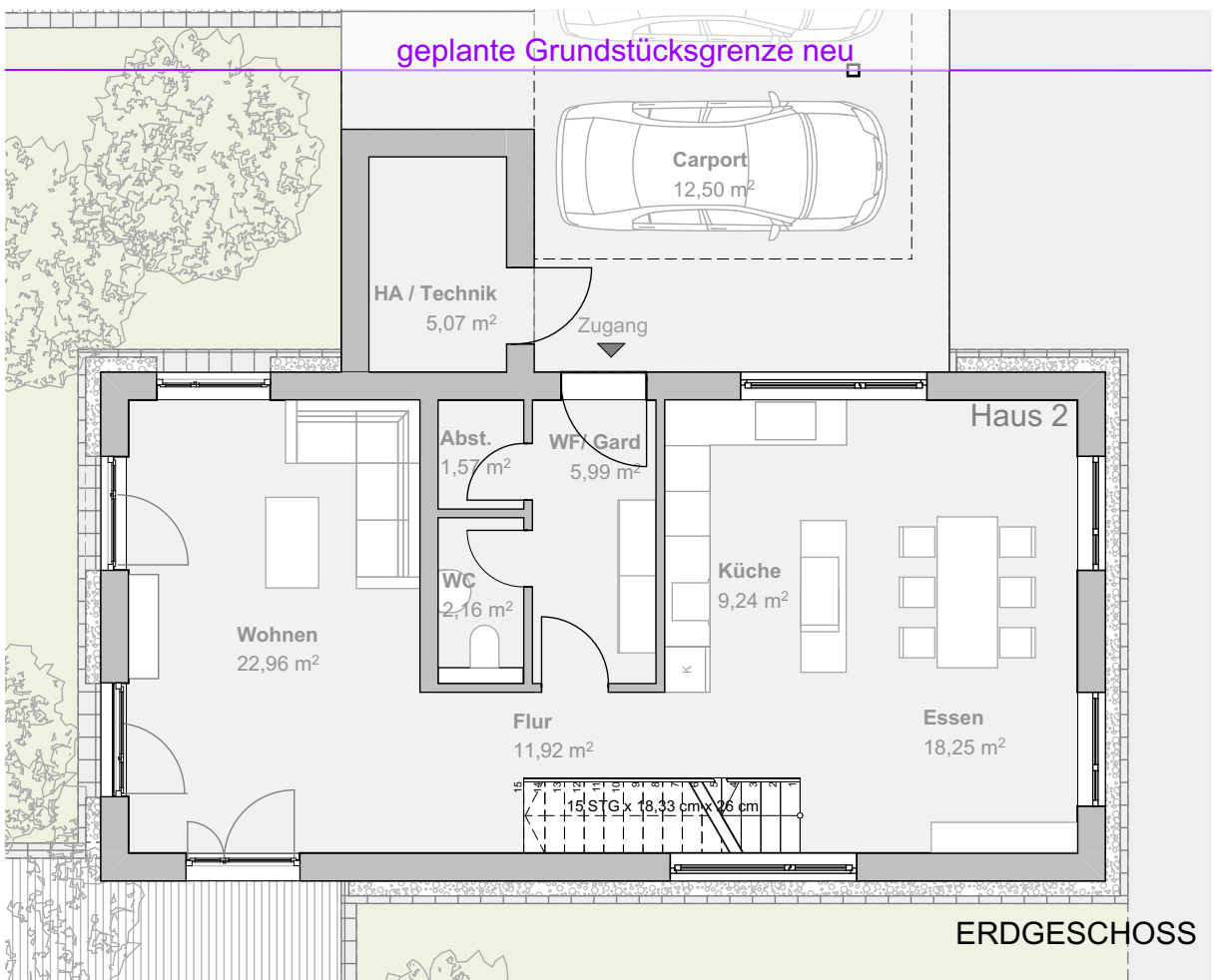
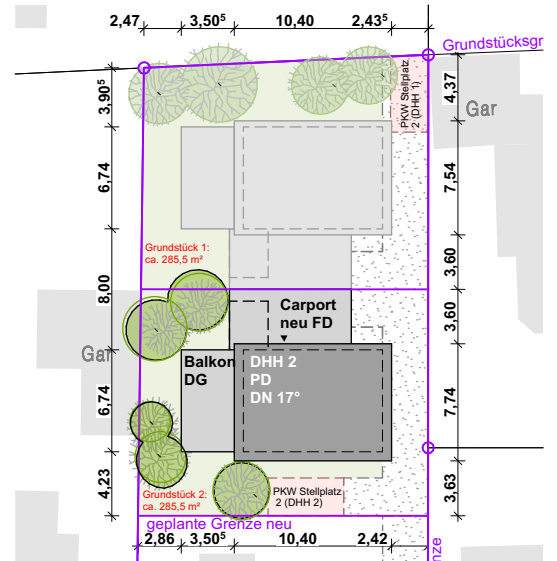




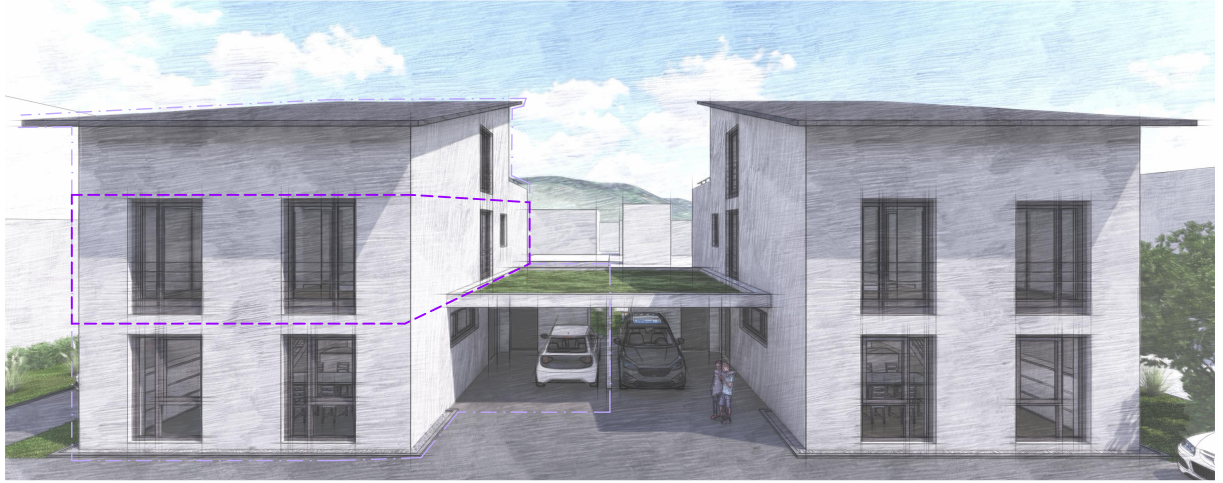
## HAUS 2

### WOHNFLÄCHE

Wohnen	22,96 m <sup>2</sup>
Küche	9,24 m <sup>2</sup>
Essen	18,25 m <sup>2</sup>
WF/ Gard	5,99 m <sup>2</sup>
Abst.	1,57 m <sup>2</sup>
WC.	2,16 m <sup>2</sup>
HA/ Technik	5,07 m <sup>2</sup>
<b>Gesamt</b>	<b>65,24 m<sup>2</sup></b>

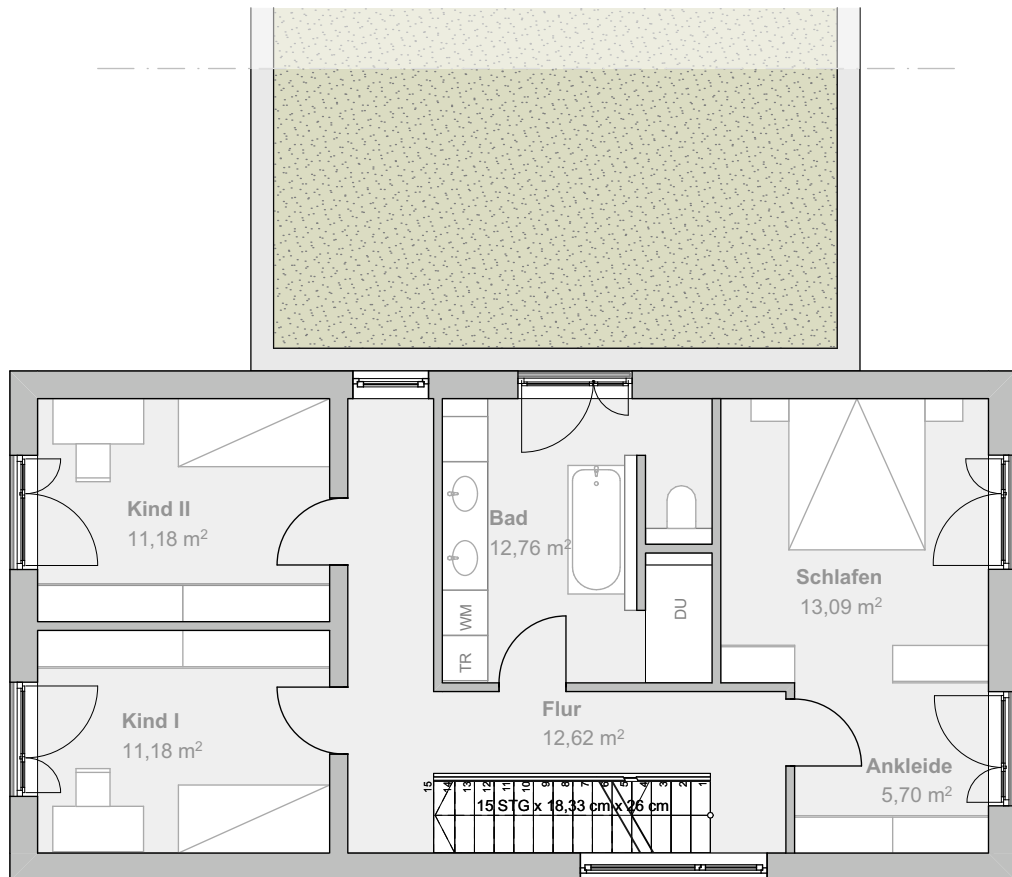
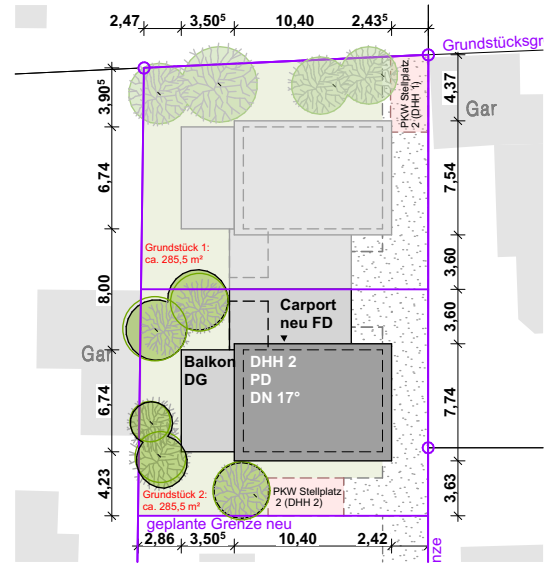




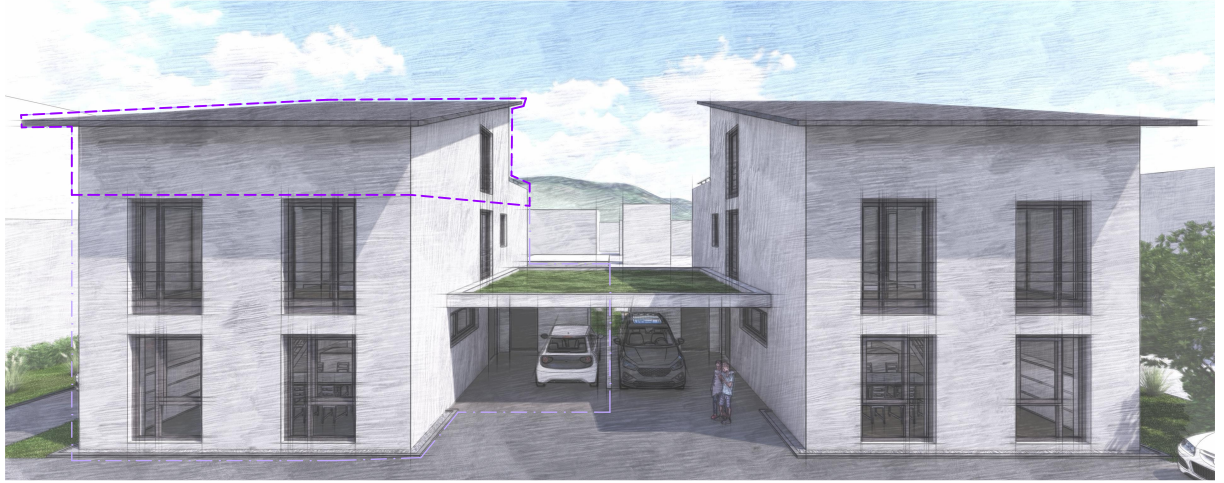


## HAUS 2 WOHNFLÄCHE

Schlafen	13,09 m <sup>2</sup>
Ankleide	5,70 m <sup>2</sup>
Bad	12,76 m <sup>2</sup>
Kind I	11,18 m <sup>2</sup>
Kind II	11,18 m <sup>2</sup>
Flur	12,62 m <sup>2</sup>
<b>Gesamt</b>	<b>66,53 m<sup>2</sup></b>

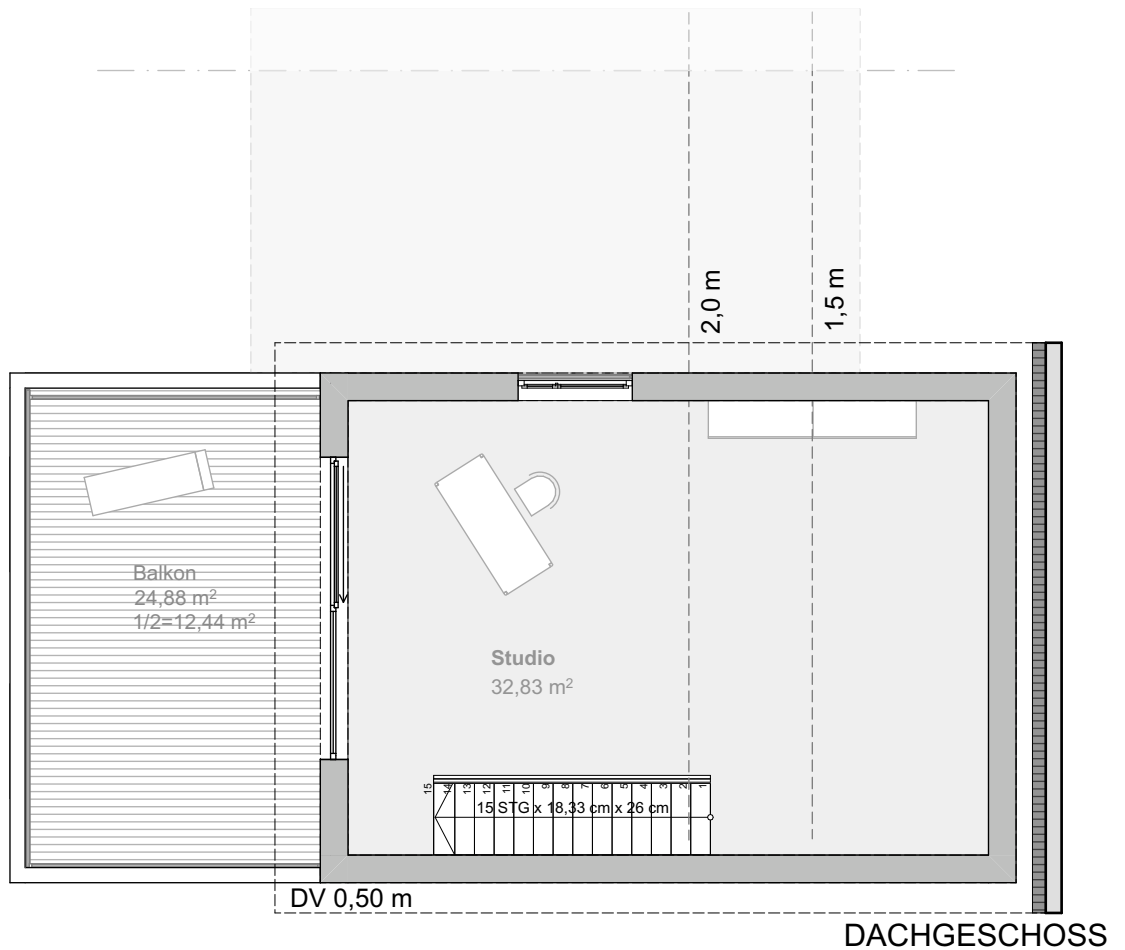
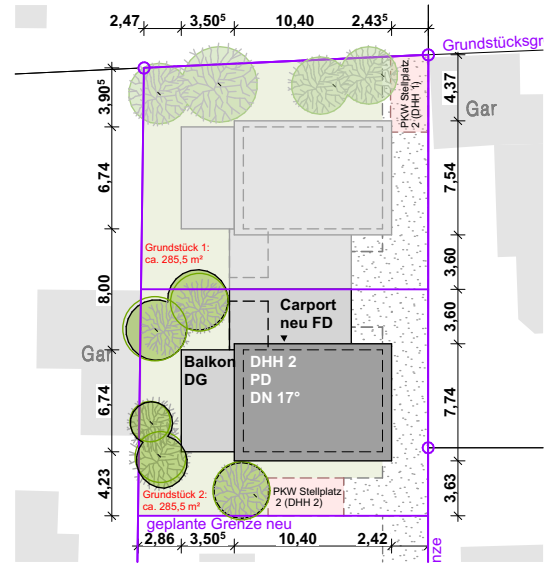


OBERGESCHOSS



## HAUS 2 WOHNFLÄCHE

Studio	32,83 m <sup>2</sup>
Balkon (24,88 m <sup>2</sup> X 0,5)	12,44 m <sup>2</sup>
<b>Gesamt</b>	<b>45,27 m<sup>2</sup></b>





Haus 2  
Wohnfläche  
177,04 m<sup>2</sup>

