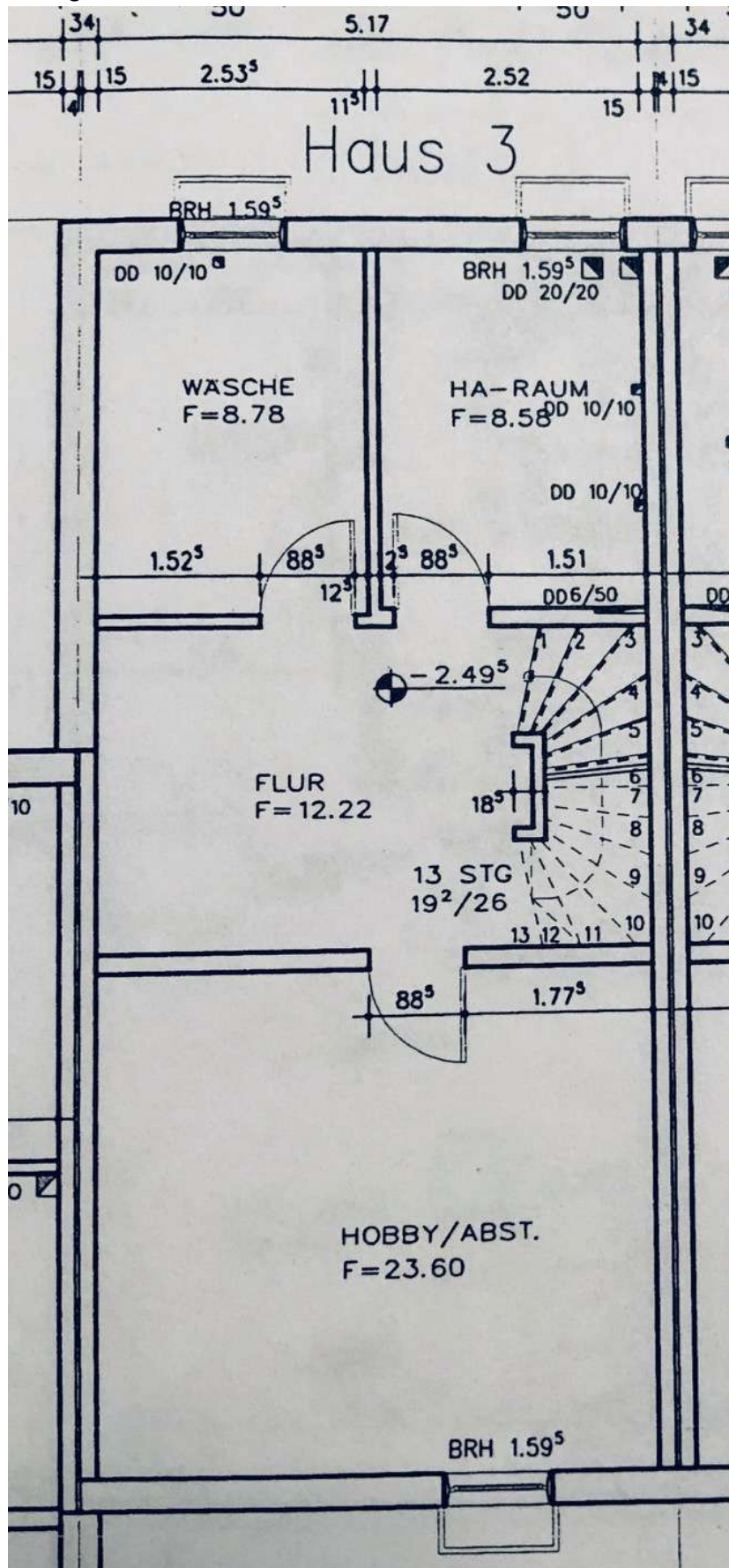
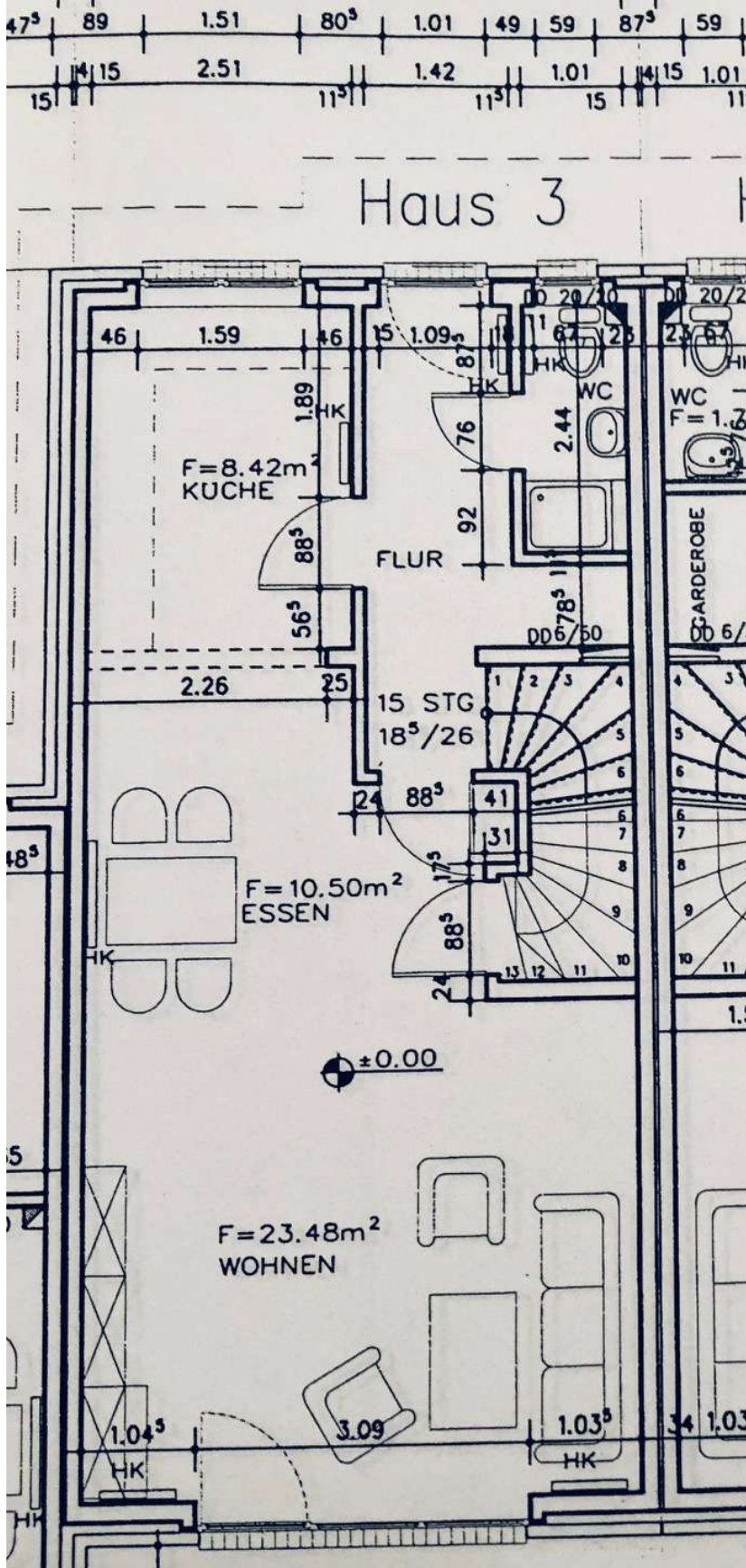


Untergeschoß



Haus 3

The floor plan for Haus 3 is a rectangular layout. At the top is the kitchen (KUCHE) with an area of $F=8.42m^2$, containing a sink (HK) and a window. Below the kitchen is the dining area (ESSEN) with an area of $F=10.50m^2$, featuring a table and chairs and a window (HK). To the right of the kitchen is a hallway (FLUR) and a bathroom (WC) with an area of $F=2.44m^2$. A staircase (STG) with 18 steps (18⁵/26) is located in the center-right. To the right of the stairs is another bathroom (WC) with an area of $F=1.6m^2$ and a wardrobe (GARDEROBE). The largest room is the living area (WOHNEN) at the bottom, with an area of $F=23.48m^2$, containing a sofa, armchair, and coffee table, and a window (HK). A central circle indicates the ground level (± 0.00). Dimensions and door swings are marked throughout the plan.



[illegible]