

Bauherr:

Erzgeb. Bauverein

Bauleitung:

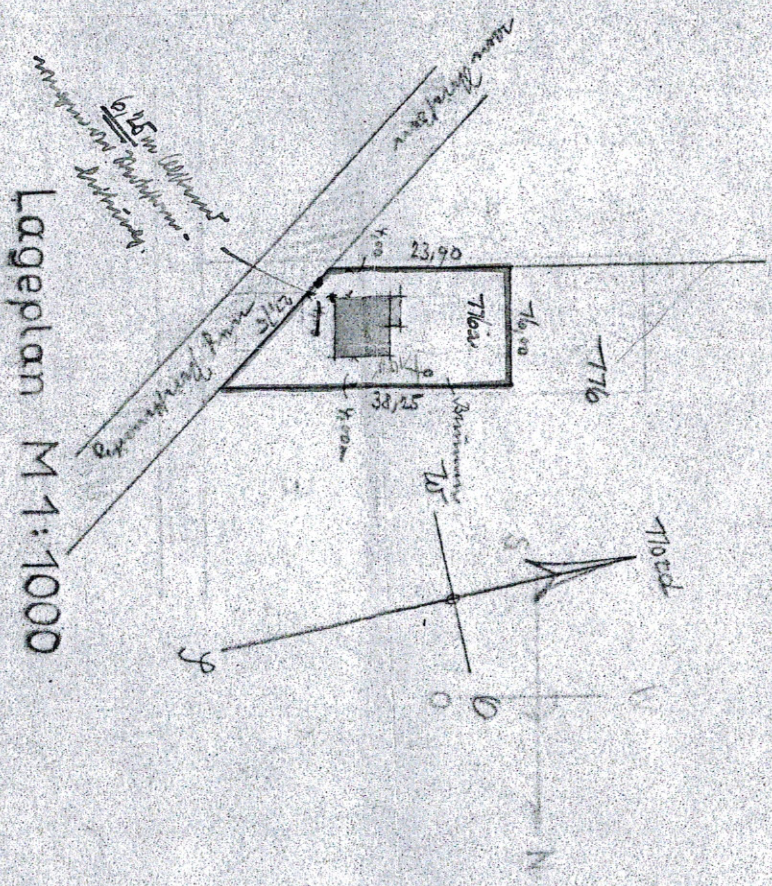
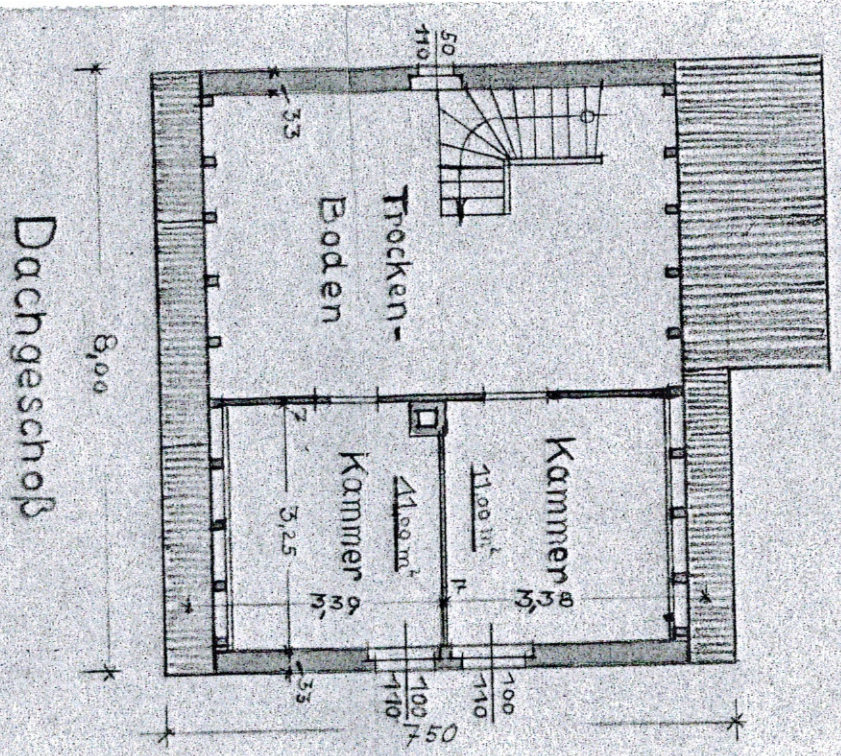
und

Georg Gabsch u. Sohn

Baugesellschaft für Holz- u. Tiefbau

Wiesbaden

Fusführung:



Lageplan M 1:1000

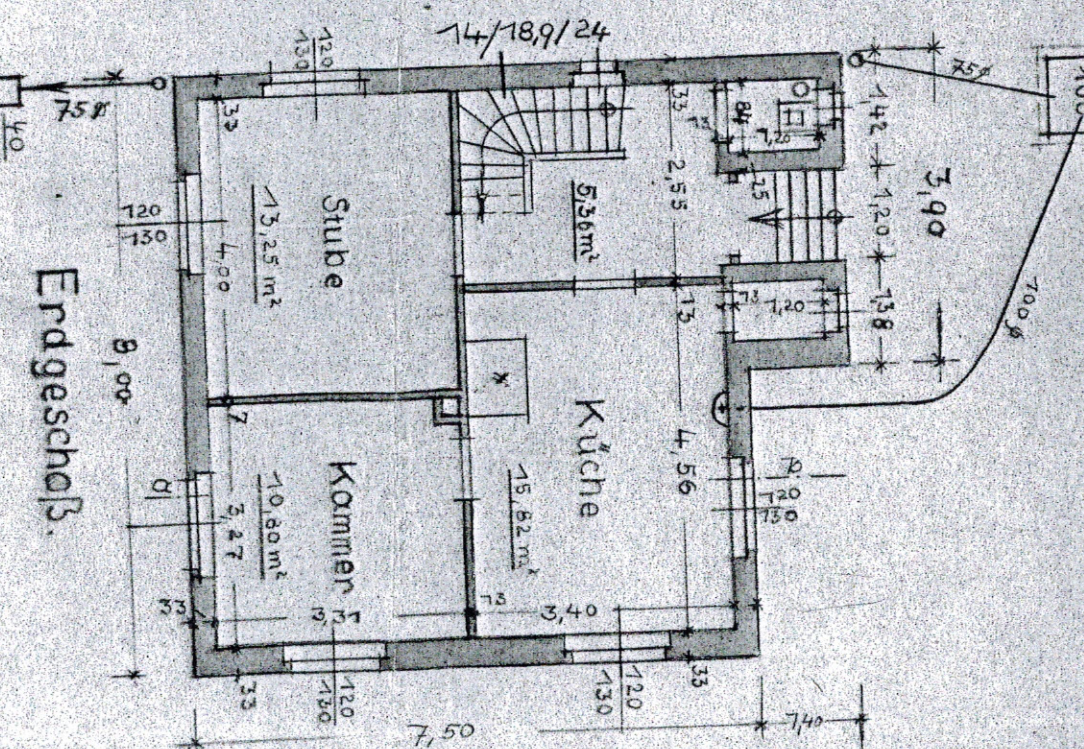
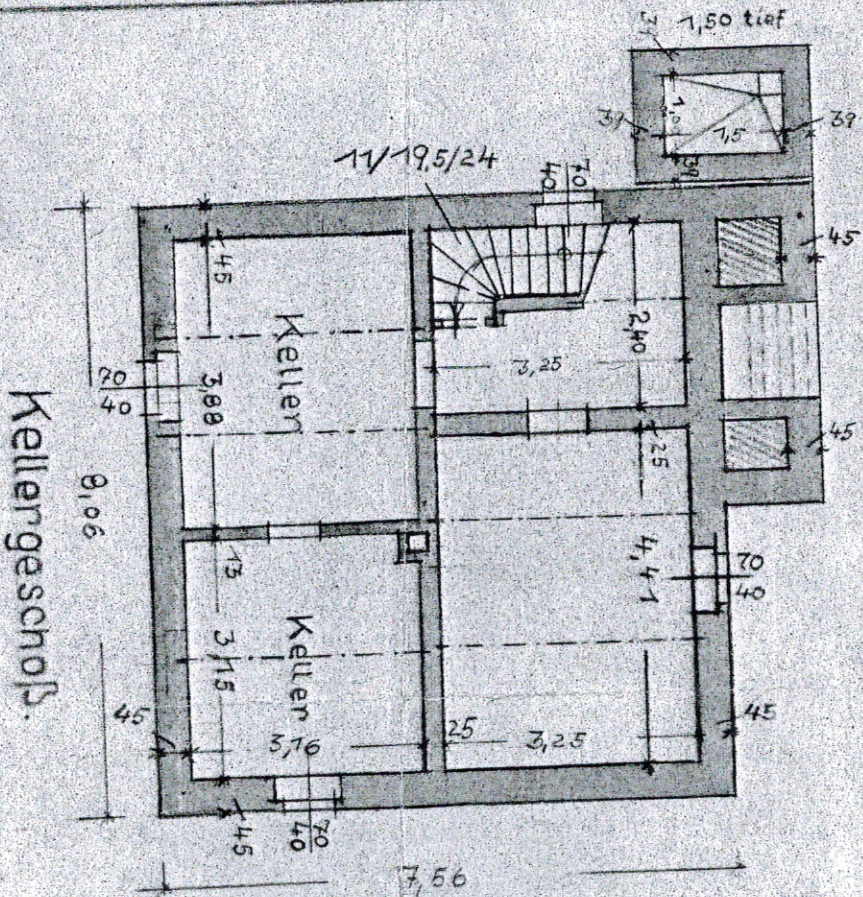
1:100

Dachgeschoss

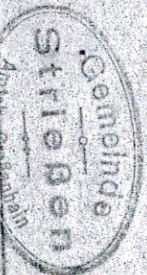
5

10 m

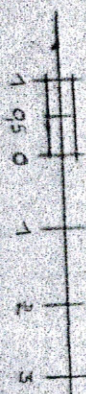
Wohnfläche 69,28 m²



7.9.1935 S.

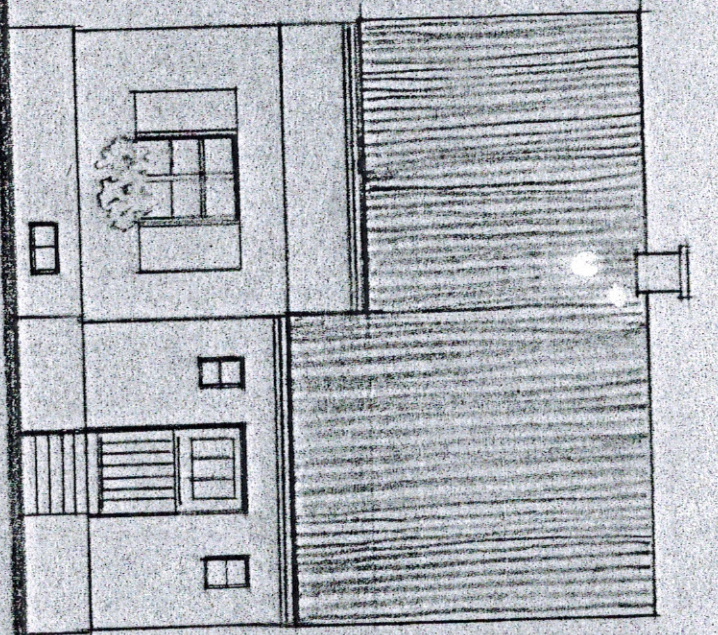


Gelesen, Herr, Bürgermeister
14/18,9/24

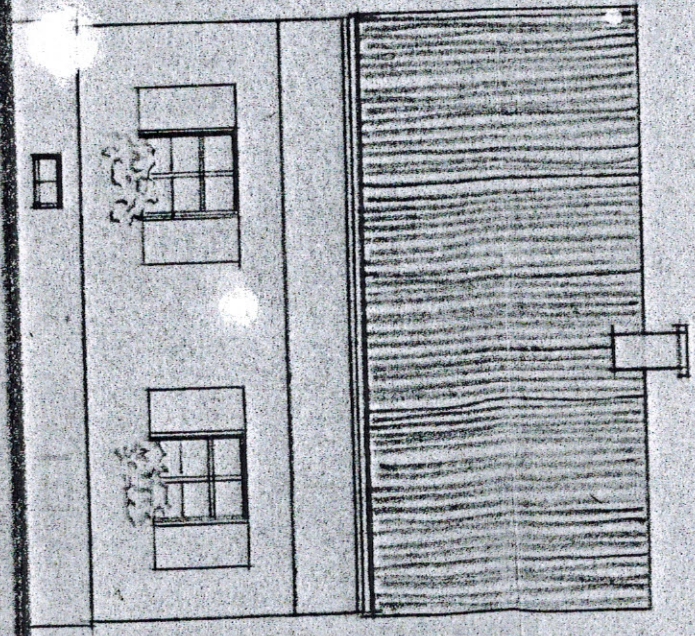


M.

ZEICHNUNG zum Einfamilien-Wohnhaus für Her

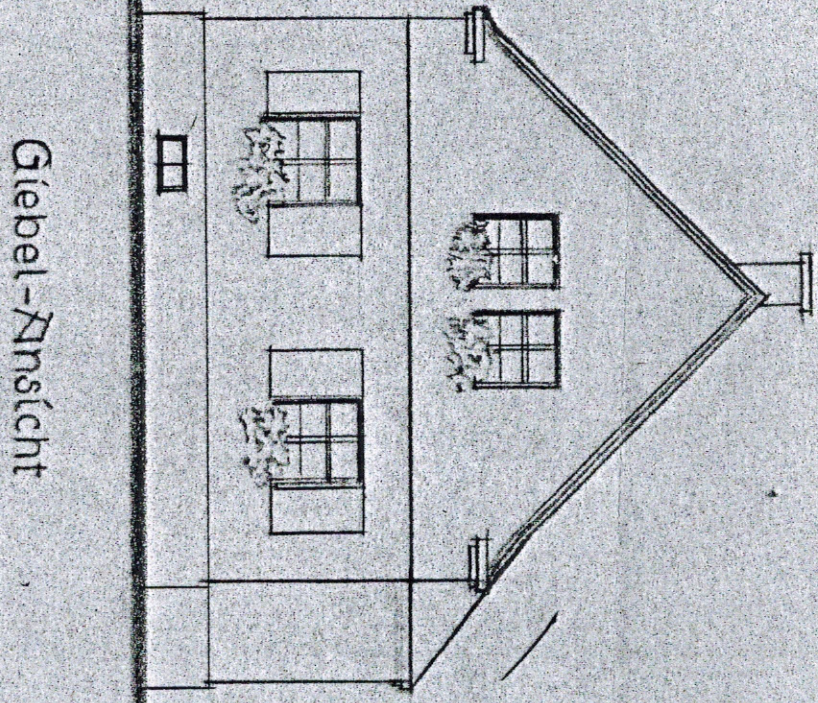


Hof-Ansicht

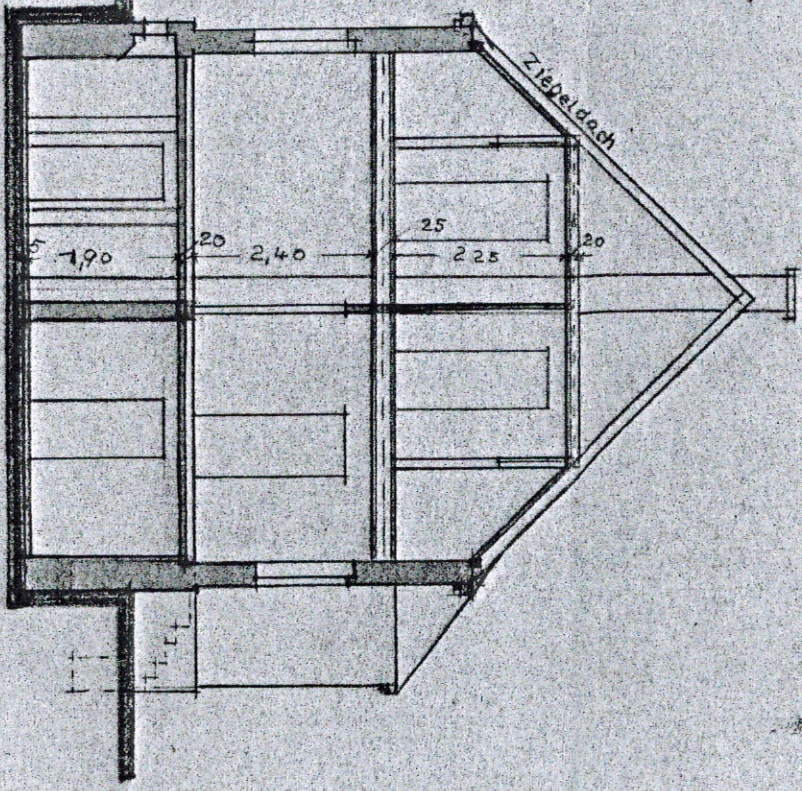


Straßen-Ansicht

im Kandelgarfner Stein Boernann, Metzger, Murrh. 716a.



Giebel-Ansicht



Schnitt a-b