



marea  
*interiors by* **MISSONI**

**EXCLUSIVE RESIDENCES**  
CORTESIN X MARBELLA



AMID  
*Costa del Sol's*  
TIMELESS ALLURE AND  
CAPTIVATING BEAUTY

Disclaimer: All pictures, plans, layouts, information, data and details included in this brochure are indicative only and may change at any time up to the final 'as built' status in accordance with final designs of the project, regulatory approvals and planning permissions. All accessories and interior finishes such as wallpaper, chandeliers, furniture, electronics, white goods, curtains, hard and soft landscaping, pavements, features, gym, and other elements displayed in the brochure, or between the plot boundary, are not part of the unit and are shown for illustrative purposes only.

MISSONI MEETS SUN-SOAKED  
COSTA DEL SOL AT

*Finca Cortesin*





SET AGAINST THE VIBRANT  
HUES OF THE MEDITERRANEAN  
COAST AND THE SPLENDOR  
OF A WORLD-CLASS  
*golf course*



# marea

*interiors by* **MISSONI**

EXCLUSIVE RESIDENCES  
CORTESIN X MARBELLA



A LOCATION  
WITHOUT EQUAL  
SURROUNDED  
BY THE BEST OF  
ALL WORLDS



- 5min THE BEACH
- 14min CASARES VILLAGE
- 15min ESTEPONA
- 15min SANTA MARIA POLO CLUB
- 20min SOTOGRANDE
- 20min REAL CLUB VALDERAMA
- 20min MARBELLA
- 25min POLO VALLEY SOTOGRANDE
- 30min LA ZAGALETA
- 45min GIBRALTAR AIRPORT
- 50min MALAGA AIRPORT

**15 MIN**

/

TO ONE OF THE BEST POLO  
CLUBS IN THE WORLD

**SANTA MARÍA POLO CLUB**



**15 MIN**

/

TO A COASTAL GEM OF  
GOLDEN SANDS & DUNES

**ESTEPONA**



**20 MIN**

/

TO MARBELLA'S LUXURIOUS  
MARINA MASTERPIECE

**PUERTO BANÚS**



**20 MIN**

/

TO ONE OF THE FINEST GOLF  
COURSES IN EUROPE

**REAL CLUB VALDERRAMA**





A *space* TO PAUSE,  
BREATH, AND RESET

Situated in the immediate vicinity of Finca Cortesin Resort, Marea, interiors by Missoni, is designed around the Costa Del Sol's breathtaking landscape, the mesmerizing Mediterranean Sea, and a world-class golf course.



## A *chic* ENCLAVE

An upscale residential community at Finca Cortesin, offering a harmonious blend of refined living within the pristine landscapes of Costa del Sol.

This exclusive gated community offers 2-, 3- and 4-bedroom residences, features a private entrance and 24/7 premium security services, to guarantee the highest standard in terms of security and privacy.





SOPHISTICATED  
MEDITERRANEAN *flair*

Minimalist approach, simplicity and purity of lines, this is the idea behind the Contemporary Mediterranean Style. Modern elements and natural materials create a warm, inviting atmosphere complemented by soft, warm and natural lighting.







*Panorama*  
OF COASTAL SPLENDOR

Marea, interiors by Missoni, offers breathtaking views of the entire Costa del Sol coastline, stretching from Marbella all the way to Gibraltar.



# THREE COUNTRIES. ONE HORIZON.

*Unrivalled 270-degree panorama: from Marbella and the vast Mediterranean to Gibraltar and Morocco's mountains.*

**MARBELLA**

**MEDITERRANEAN SEA**

**GIBRALTAR & MOROCCO**

**FINCA CORTESIN**

*These photos were taken on site, 7 March 2023.*



ENVELOPED  
IN MODERN *comforts*  
AND AMENITIES



GATED  
COMMUNITY\*



24/7 PREMIUM  
SECURITY SERVICES\*



STATE-OF-THE-ART  
GYM



INFINITY  
POOL



TENNIS  
COURT



COMMUNITY  
GARDEN



DEDICATED AREAS  
FOR CHILDREN

SWIMMING  
POOL

SPLASH  
AREA

\* Provided by Cortesin macro community.

# Upscale AMENITIES

At the core of the community is where connections sparkle and new ideas are born. Here are a majestic pool deck to unwind, indoor and outdoor kids areas, and a modern fitness center for residents' well-being.



# *Fitness Centre*

INTERIOR BY **MISSONI**

Luxury comes with a healthier lifestyle. At Marea, interiors by Missoni, the well-being center was specifically designed and equipped to satisfy every fitness enthusiast, while soothing into incomparable coastal views.





**LIVE IN  
THE SUNSHINE,  
SWIM  
THE SEA,  
DRINK  
THE WILD AIR**

*Ralph Waldo Emerson*

IN MAREA'S NEIGHBORHOOD

FINCA  
CORTESESIN  
HOTEL & GOLF CLUB

# Finca Cortesin

“THIS IS CERTAINLY ONE  
OF EUROPE'S SMARTEST  
PLACES TO ESCAPE TO.”

*Conde Nast Traveler, UK*

Finca Cortesin, recognized as one of Spain's most prestigious hotels, stands as a serene retreat. True to its reputation, this resort boasts a distinction among the world's top 50 hotels.

IN MAREA'S NEIGHBORHOOD

MEDITERRANEAN CHARM  
WITH A TWIST OF  
*contemporary* LIVING,  
RIGHT NEXT DOOR

With its palm-studded patios and perfumed Mediterranean gardens, Finca Cortesin offers a lavish spa, four pools, tennis facilities, a grand beach club, and exquisite dining featuring a Michelin Star restaurant.



5-STAR HOTEL



4 SWIMMING POOLS



BEACH CLUB



RESTAURANTS



CHAMPIONSHIP GOLF COURSE



TENNIS COURT



SPA & SPORTS CLUB



SHOPPING AREA

IN MAREA'S NEIGHBORHOOD

*Home to*

SOLHEIM CUP 2023

& NICKLAUS ACADEMY

Finca Cortesin's 18-hole championship golf course is Spain's finest, offering one of Europe's most memorable golfing experiences. Paired with this is Nicklaus Academy, boasting top-tier instruction under the legacy of Jack Nicklaus.



IN MAREA'S NEIGHBORHOOD

*Sotogrande's*  
INTERNATIONAL  
POLO TOURNAMENT

With world-renowned polo clubs like the Santa María Polo Club and the Los Pinos Polo Club, these establishments are more than just sporting grounds—they are symbols of aspiration.





IN MAREA'S NEIGHBORHOOD

THE THRILL OF  
*horseback riding*  
THROUGH CASARES

Journey across the renowned Casares' white villages and the mediterranean coast, and fully embrace the wonders of Costa Del Sol's nature, all while perched atop a majestic horse.

IN MAREA'S NEIGHBORHOOD

A PARADISE FOR  
*sun seekers*

As horseback riders weave through Estepona's dunes, Costa del Sol unveils the Mediterranean beauty through azure waters, golden beaches and breathtaking sunsets.



marea  
*interiors by* **MISSONI**

## SPECIFICATIONS & FLOOR PLANS

### DISCLAIMER

All pictures, plans, layouts, information, data and details included in this brochure are indicative only and may change at any time up to the final 'as built' status in accordance with final designs of the project, regulatory approvals and planning permissions. All accessories and interior finishes such as wallpaper, chandeliers, furniture, electronics, white goods, curtains, hard and soft landscaping, pavements, features, gym, and other elements displayed in the brochure, or between the plot boundary, are not part of the unit and are shown for illustrative purposes only.

**LOWER PLATFORM**

- BLOCK A
- BLOCK B

**UPPER PLATFORM**

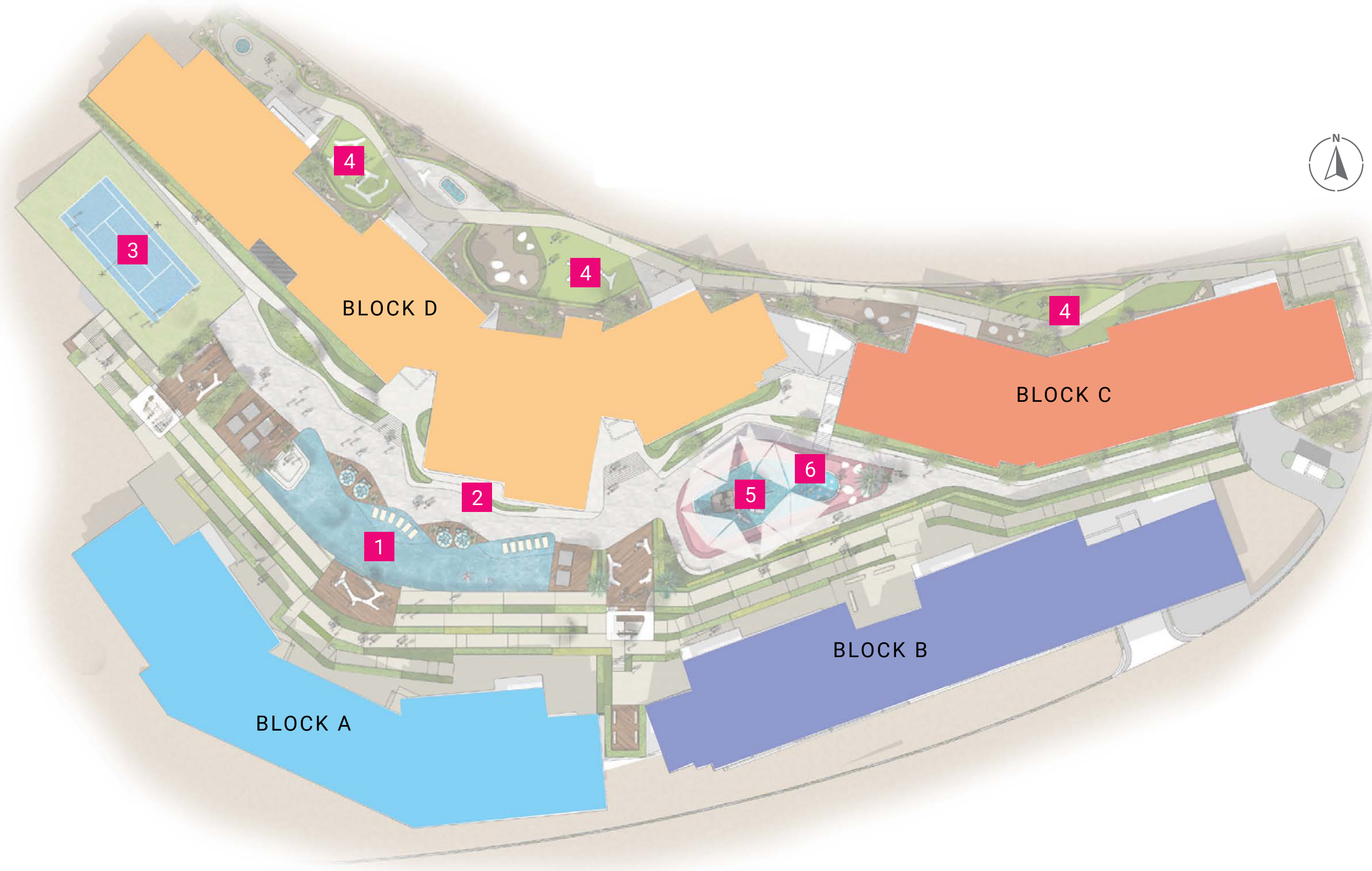
- BLOCK C
- BLOCK D

**AMENITIES**

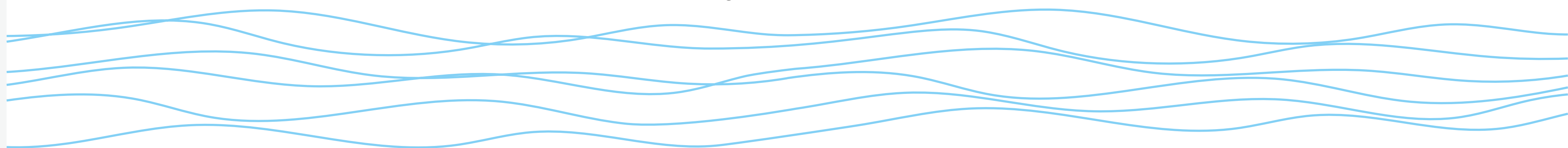
- 1 INFINITY POOL
- 2 STATE-OF-THE-ART GYM
- 3 TENNIS COURT
- 4 COMMUNITY GARDEN
- 5 CHILDREN SWIMMING POOL
- 6 CHILDREN SPLASH AREA



GOLF VIEW



MEDITERRANEAN SEA VIEW



## SPECIFICATIONS

### PROJECT

- Location: Cortesin, Casares, Costa Del Sol, Spain
- Developer: Subsidiary of Dar Global PLC
- Interiors: Missoni
- Configuration: 4 blocks, B+G+2 each
- Unit type: Unfurnished
- Ceiling height: 3 meters (rooms)
- No of elevators: 9 across the 4 building blocks
- 2-bed units: 1 parking space and storage
- 3- and 4-bed units: 2 parking spaces and storage

### SERVICES

- Underground parking
- Pool and communal area maintenance
- 24/7 premium security\*
- Gated Community\*

\* Provided by Cortesin macro community.

### AMENITIES

- Infinity pool
- State-of-the-art gym
- Tennis court
- Children swimming pool
- Children splash area

### FOYER / LIVING / DINING

- Prime locally sourced marble flooring
- Prime locally sourced marble skirting
- Internal wall finishes with premium quality emulsion paint
- Missoni inspired accent wall finish
- Suspended ceiling in gypsum for the dry areas and waterproof plasterboard for the wet areas

### KITCHEN

- Prime locally sourced porcelain flooring tiles
- Prime locally sourced porcelain skirting tiles
- Paint and porcelain walls
- Suspended ceiling in gypsum for the dry areas and waterproof plasterboard for the wet areas
- Solid surface countertops
- Joinery with lacquered or laminate finish for cabinets
- Accent fronts: Missoni inspired laminate finish
- Appliances: Stainless steel sink, fridge, oven, hob, hood and washing machine. Brand: Siemens or equivalent

### BEDROOMS

- Prime locally sourced porcelain tiles wood effect flooring
- Prime locally sourced porcelain tiles wood effect skirting
- Plastered walls with emulsion paint
- Missoni inspired accent wall finish
- Paint finish ceiling
- Built-in joinery with lacquered or laminate finish wardrobe

### BATHROOMS / POWDER ROOM

- Prime locally sourced porcelain flooring tiles - marble look
- Prime locally sourced porcelain wall tiles - marble look
- Missoni inspired accent wall finish
- Moisture resistant gypsum ceiling finished with paint
- Solid surface countertop or equivalent
- Joinery with lacquered or laminate finish
- Porcelanosa, Duravit sanitary fixtures and accessories or equivalent
- Duravit sanitary ware and accessories or equivalent
- Mirror included in bathrooms
- Missoni inspired mirror in powder room



## 2 BEDROOMS TYPE - A -

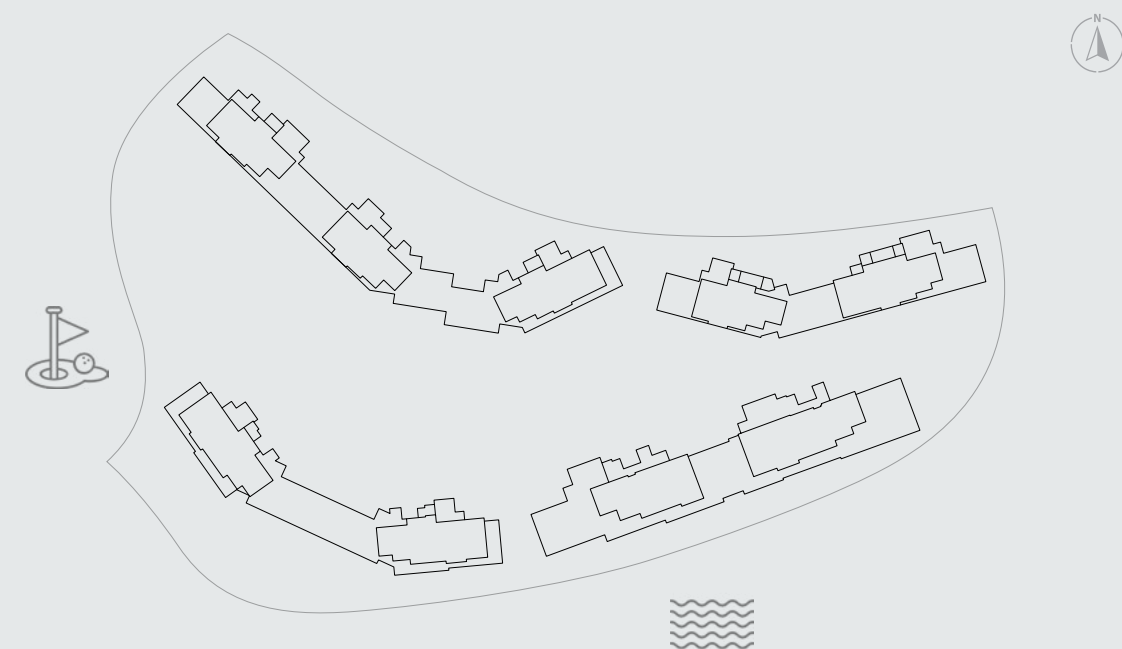
GROUND FLOOR



FIRST FLOOR



SECOND FLOOR



RESIDENCE (sqm)	
Internal Built up Area	107 - 110
Terrace Built up Area	22 - 35
Common Built up Area	24 - 26

TOTAL AREA (sqm)	
Total Built up Area	157 - 168
<i>(incl. common area)</i>	

PARKING	
Space	1
<i>and storage</i>	

**Disclaimer:**  
All pictures, plans, layouts, information, data and details included in this brochure are indicative only and may change at any time up to the final 'as built' status in accordance with final designs of the project, regulatory approvals and planning permissions. All accessories and interior finishes such as wallpaper, chandeliers, furniture, electronics, white goods, curtains, hard and soft landscaping, pavements, features, gym, and other elements displayed in the brochure, or between the plot boundary, are not part of the unit and are shown for illustrative purposes only.

## 2 BEDROOMS TYPE - B -

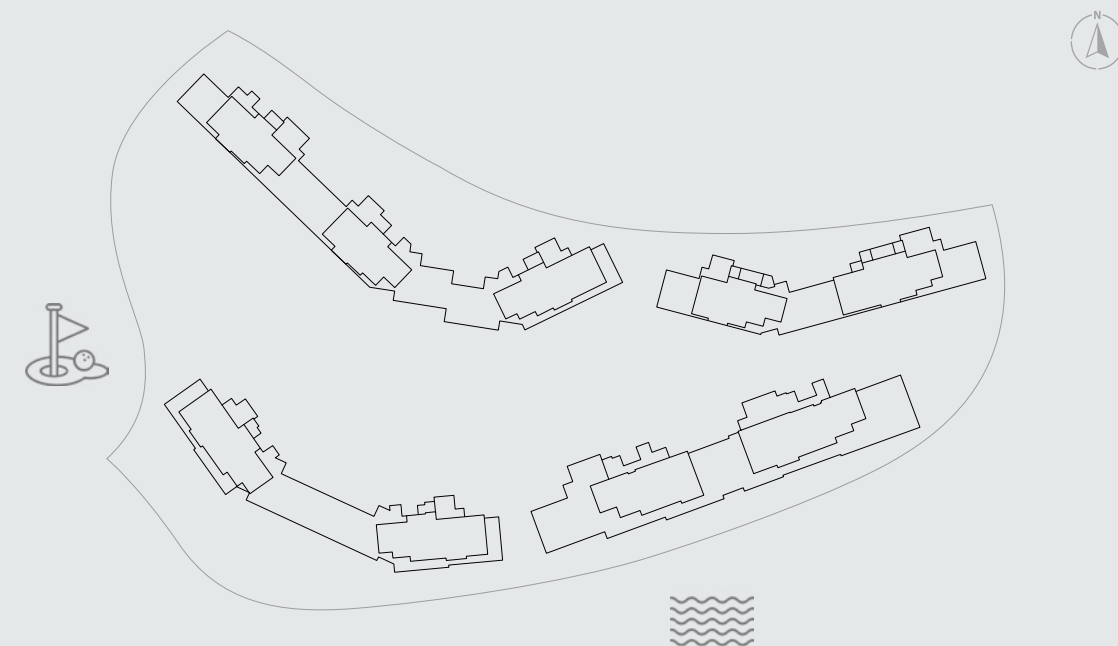
GROUND FLOOR



FIRST FLOOR



SECOND FLOOR



### RESIDENCE (sqm)

Internal Built up Area	97 - 99
Terrace Built up Area	26 - 33
Common Built up Area	25

### TOTAL AREA (sqm)

Total Built up Area	149 - 155
<i>(incl. common area)</i>	

### PARKING

Space	1
<i>and storage</i>	

**Disclaimer:**  
All pictures, plans, layouts, information, data and details included in this brochure are indicative only and may change at any time up to the final 'as built' status in accordance with final designs of the project, regulatory approvals and planning permissions. All accessories and interior finishes such as wallpaper, chandeliers, furniture, electronics, white goods, curtains, hard and soft landscaping, pavements, features, gym, and other elements displayed in the brochure, or between the plot boundary, are not part of the unit and are shown for illustrative purposes only.

## 2 BEDROOMS TYPE - C -

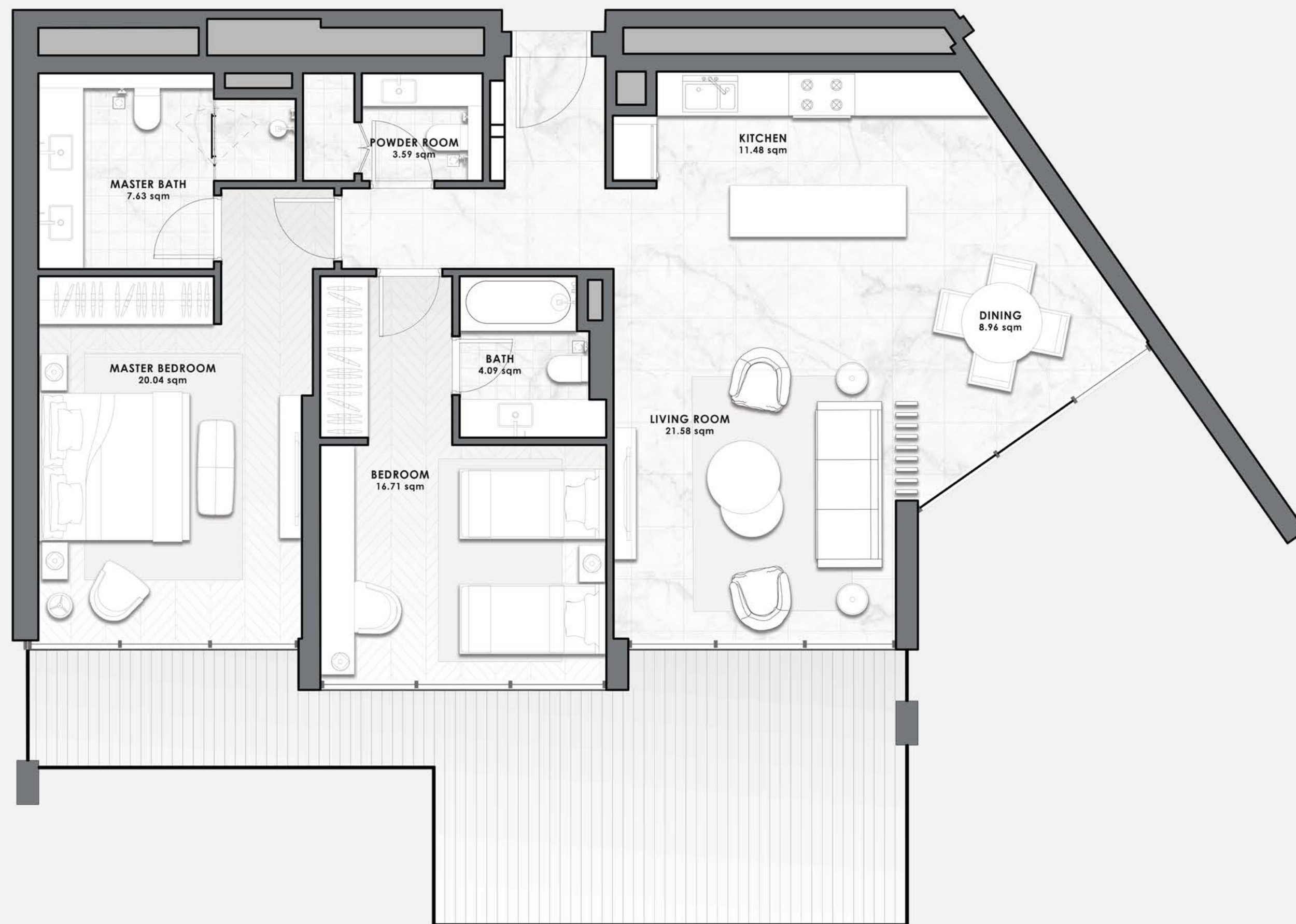
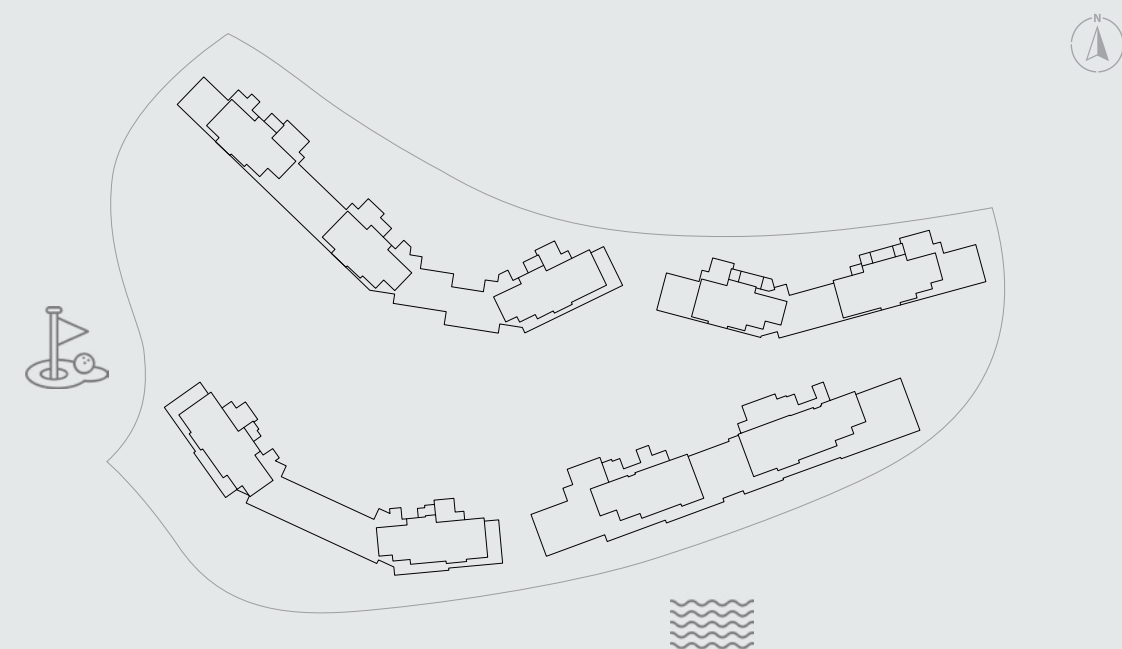
GROUND FLOOR



FIRST FLOOR



SECOND FLOOR



RESIDENCE (sqm)	
Internal Built up Area	112
Terrace Built up Area	28 - 34
Common Built up Area	28

TOTAL AREA (sqm)	
Total Built up Area	168 - 173
<i>(incl. common area)</i>	

PARKING	
Space	1
<i>and storage</i>	

**Disclaimer:**  
All pictures, plans, layouts, information, data and details included in this brochure are indicative only and may change at any time up to the final 'as built' status in accordance with final designs of the project, regulatory approvals and planning permissions. All accessories and interior finishes such as wallpaper, chandeliers, furniture, electronics, white goods, curtains, hard and soft landscaping, pavements, features, gym, and other elements displayed in the brochure, or between the plot boundary, are not part of the unit and are shown for illustrative purposes only.



## 2 BEDROOMS TYPE - D -

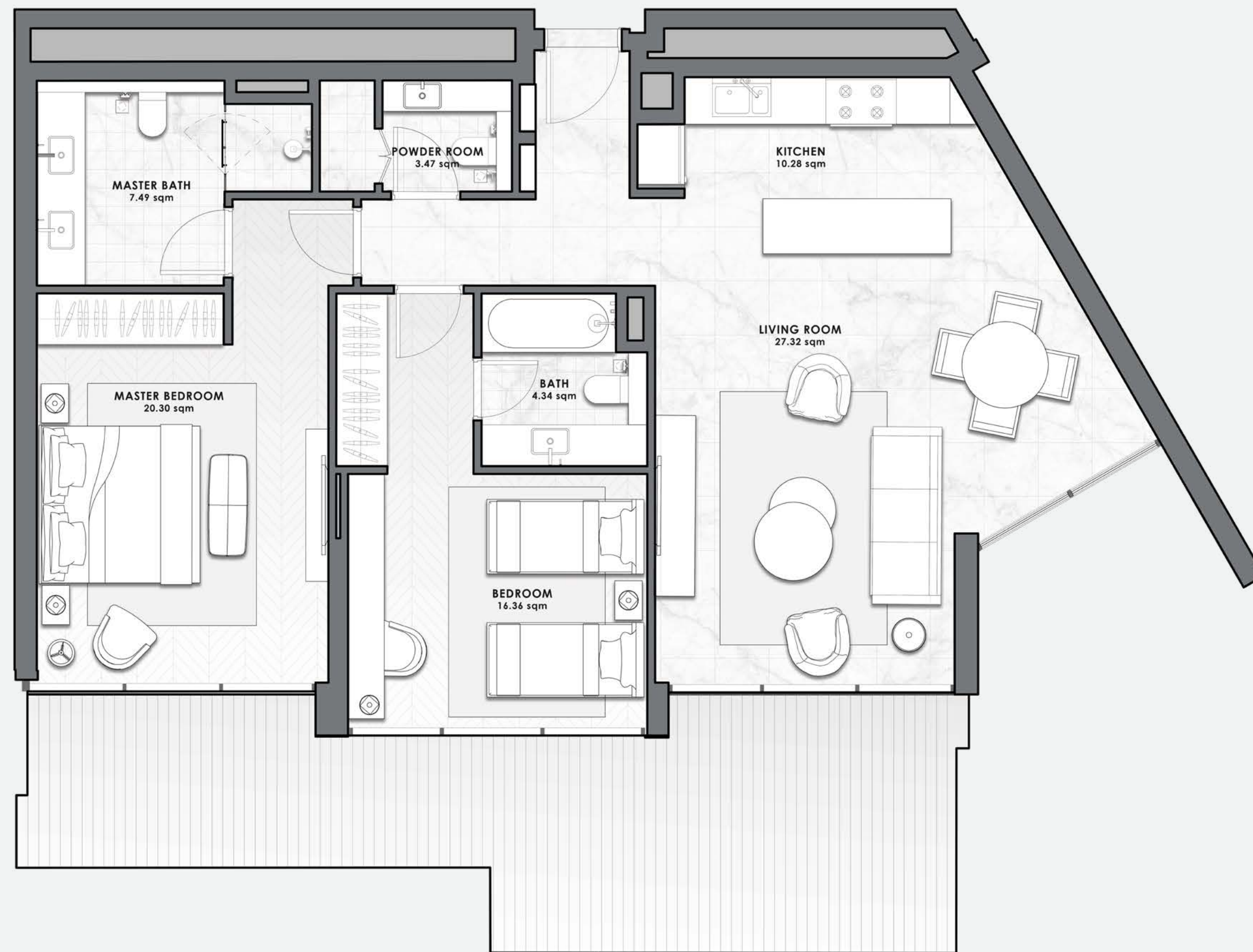
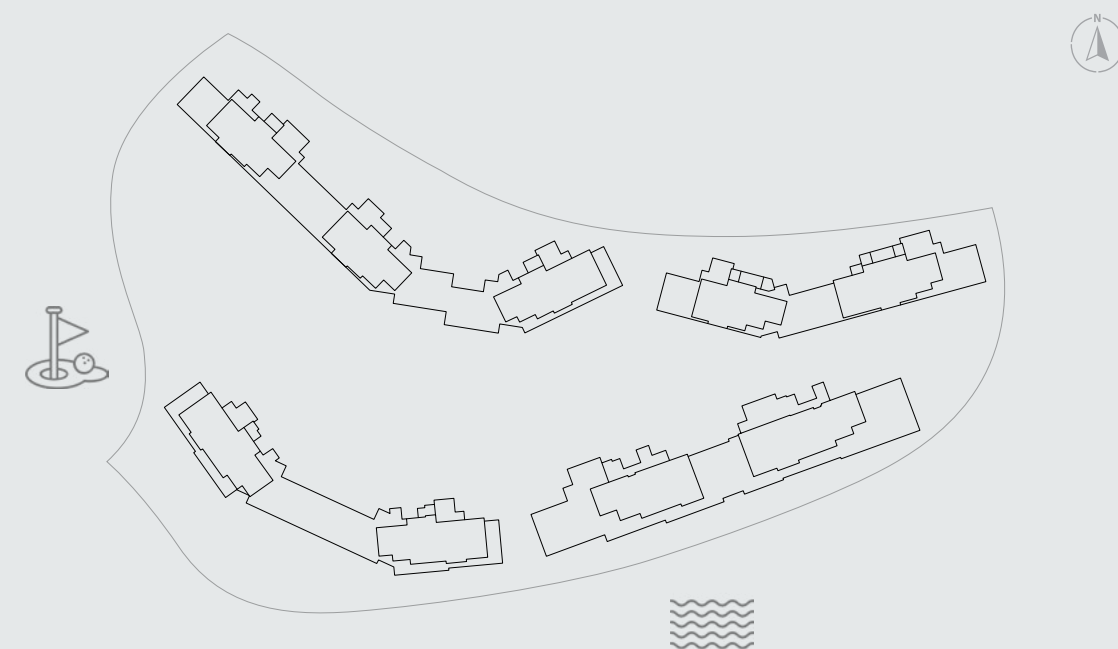
GROUND FLOOR



FIRST FLOOR



SECOND FLOOR



### RESIDENCE (sqm)

Internal Built up Area	107
Terrace Built up Area	20 - 33
Common Built up Area	27

### TOTAL AREA (sqm)

Total Built up Area	154 - 166
<i>(incl. common area)</i>	

### PARKING

Space	1
<i>and storage</i>	

**Disclaimer:**  
All pictures, plans, layouts, information, data and details included in this brochure are indicative only and may change at any time up to the final 'as built' status in accordance with final designs of the project, regulatory approvals and planning permissions. All accessories and interior finishes such as wallpaper, chandeliers, furniture, electronics, white goods, curtains, hard and soft landscaping, pavements, features, gym, and other elements displayed in the brochure, or between the plot boundary, are not part of the unit and are shown for illustrative purposes only.

# 3 BEDROOMS TYPE - A -

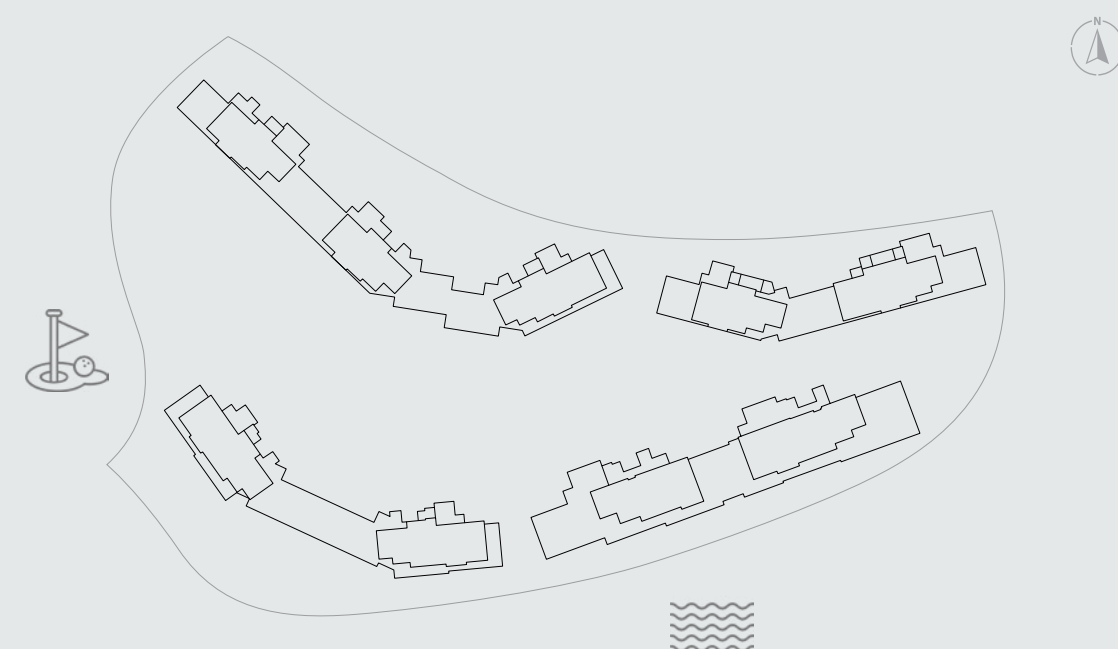
GROUND FLOOR



FIRST FLOOR



SECOND FLOOR



RESIDENCE (sqm)	
Internal Built up Area	141 - 143
Terrace Built up Area	28 - 43
Common Built up Area	34

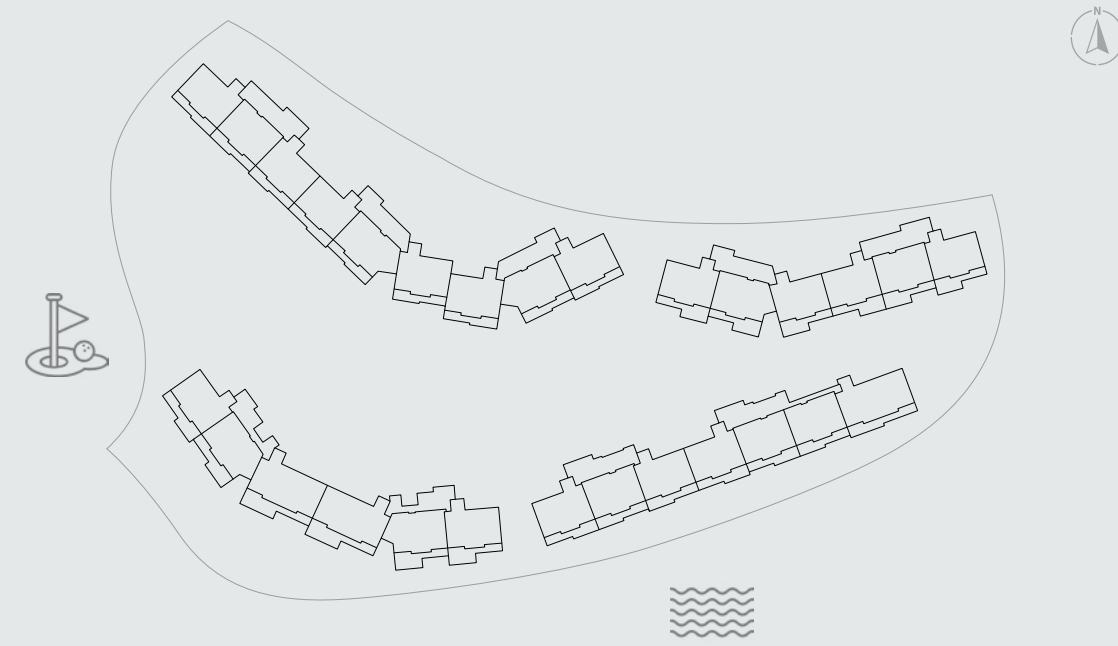
TOTAL AREA (sqm)	
Total Built up Area	206 - 218
<i>(incl. common area)</i>	

PARKING	
Space	2
<i>and storage</i>	

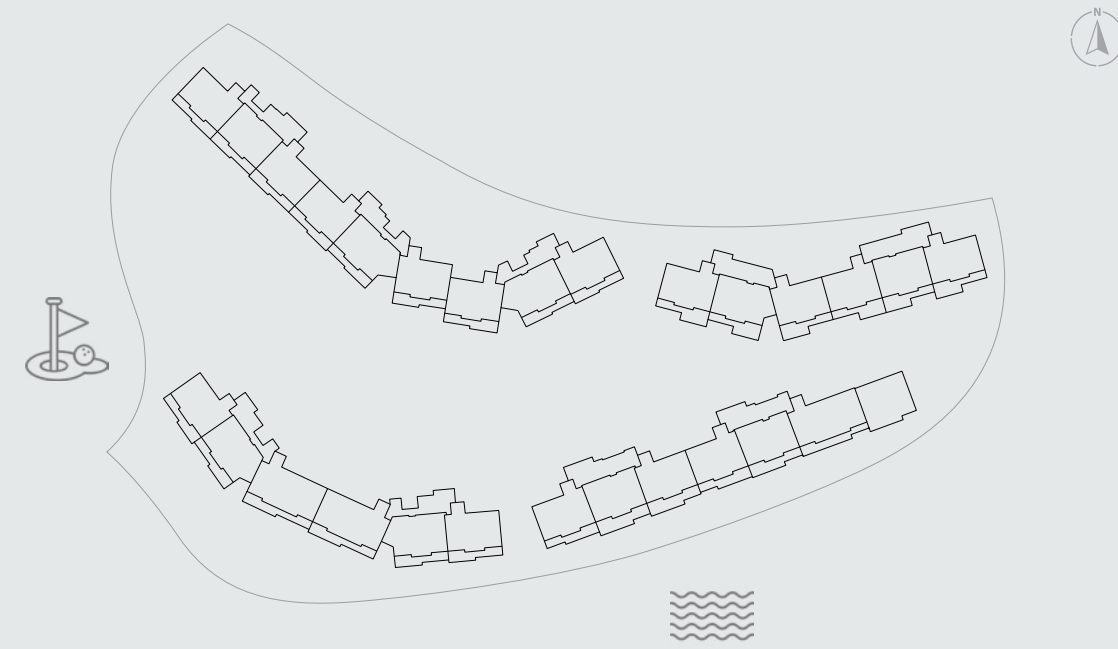
**Disclaimer:**  
All pictures, plans, layouts, information, data and details included in this brochure are indicative only and may change at any time up to the final 'as built' status in accordance with final designs of the project, regulatory approvals and planning permissions. All accessories and interior finishes such as wallpaper, chandeliers, furniture, electronics, white goods, curtains, hard and soft landscaping, pavements, features, gym, and other elements displayed in the brochure, or between the plot boundary, are not part of the unit and are shown for illustrative purposes only.

# 3 BEDROOMS TYPE - B -

GROUND FLOOR



FIRST FLOOR



SECOND FLOOR



RESIDENCE (sqm)	
Internal Built up Area	154 - 156
Terrace Built up Area	15 - 55
Common Built up Area	38

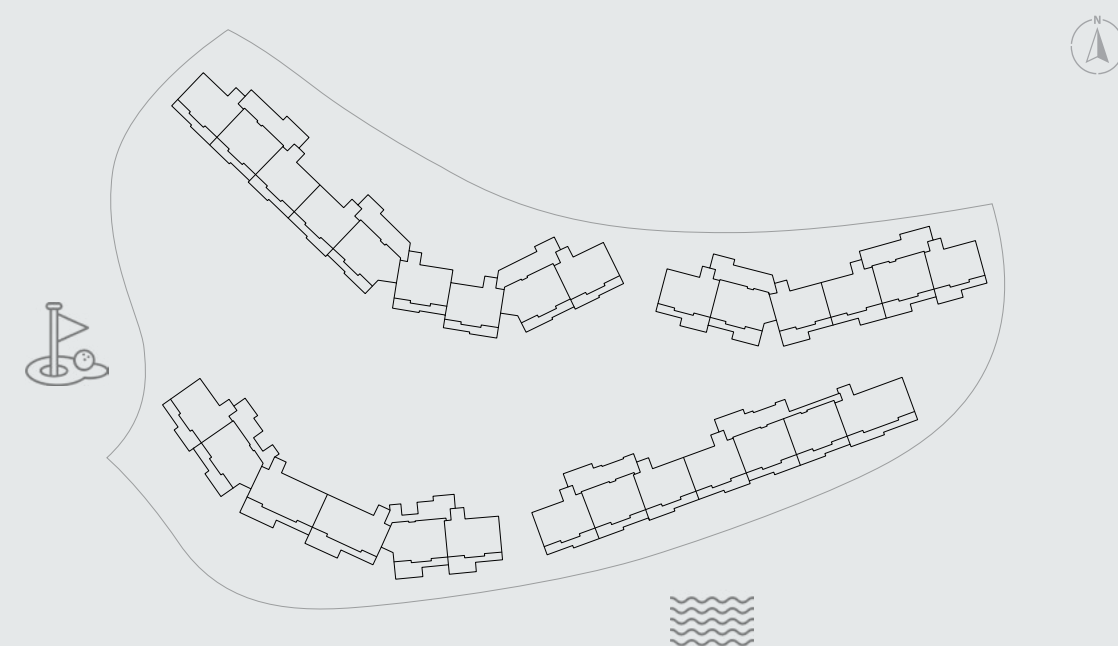
TOTAL AREA (sqm)	
Total Built up Area	209 - 248
<i>(incl. common area)</i>	

PARKING	
Space	2
<i>and storage</i>	

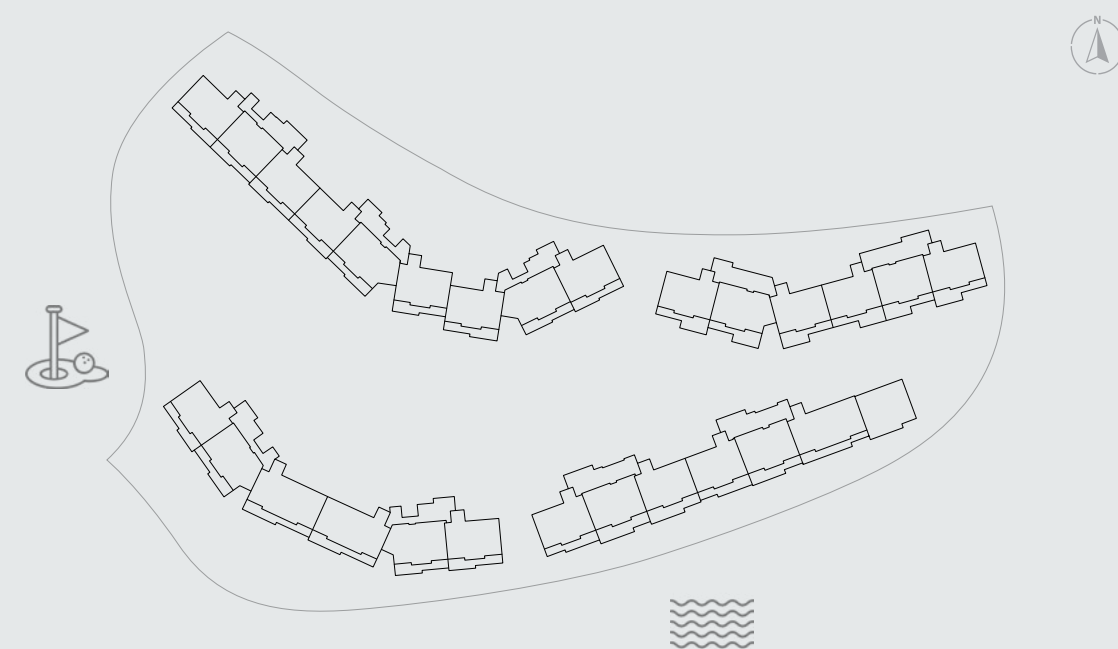
**Disclaimer:**  
All pictures, plans, layouts, information, data and details included in this brochure are indicative only and may change at any time up to the final 'as built' status in accordance with final designs of the project, regulatory approvals and planning permissions. All accessories and interior finishes such as wallpaper, chandeliers, furniture, electronics, white goods, curtains, hard and soft landscaping, pavements, features, gym, and other elements displayed in the brochure, or between the plot boundary, are not part of the unit and are shown for illustrative purposes only.

## 4 BEDROOMS TYPE - A -

GROUND FLOOR



FIRST FLOOR



SECOND FLOOR



RESIDENCE (sqm)	
Internal Built up Area	192 - 195
Terrace Built up Area	31 - 72
Common Built up Area	47

TOTAL AREA (sqm)	
Total Built up Area	270 - 314
<i>(incl. common area)</i>	

PARKING	
Space	2
<i>and storage</i>	

**Disclaimer:**  
All pictures, plans, layouts, information, data and details included in this brochure are indicative only and may change at any time up to the final 'as built' status in accordance with final designs of the project, regulatory approvals and planning permissions. All accessories and interior finishes such as wallpaper, chandeliers, furniture, electronics, white goods, curtains, hard and soft landscaping, pavements, features, gym, and other elements displayed in the brochure, or between the plot boundary, are not part of the unit and are shown for illustrative purposes only.

# marea

*interiors by* **MISSONI**

Luxury4you  
Immobilien

Tel.: +49 821 74909 671  
Fax: +49 821 74909 672  
Mobil: +49 175 267 75 07  
Email: [info@luxury4you.eu](mailto:info@luxury4you.eu)  
[www.luxury4you.eu](http://www.luxury4you.eu)

**NEWSLETTER  
JETZT ANMELDEN**

**BELLEVUE**  
Best Property  
Agents  
2022

**immowelt**  
Diamond  
Partner

Disclaimer: All pictures, plans, layouts, information, data and details included in this brochure are indicative only and may change at any time up to the final 'as built' status in accordance with final designs of the project, regulatory approvals and planning permissions. All accessories and interior finishes such as wallpaper, chandeliers, furniture, electronics, white goods, curtains, hard and soft landscaping, pavements, features, gym, and other elements displayed in the brochure, or between the plot boundary, are not part of the unit and are shown for illustrative purposes only.