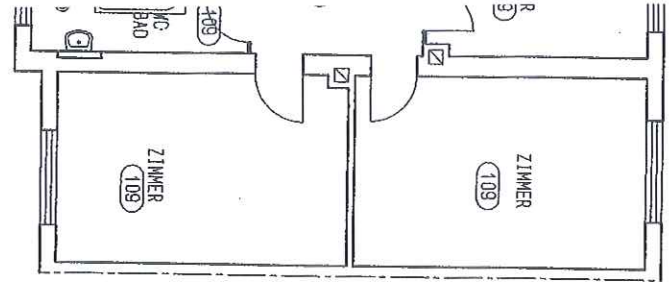


5 38 3.54 38



5090 5.36 11.5 5.425 30
50 11.5
12

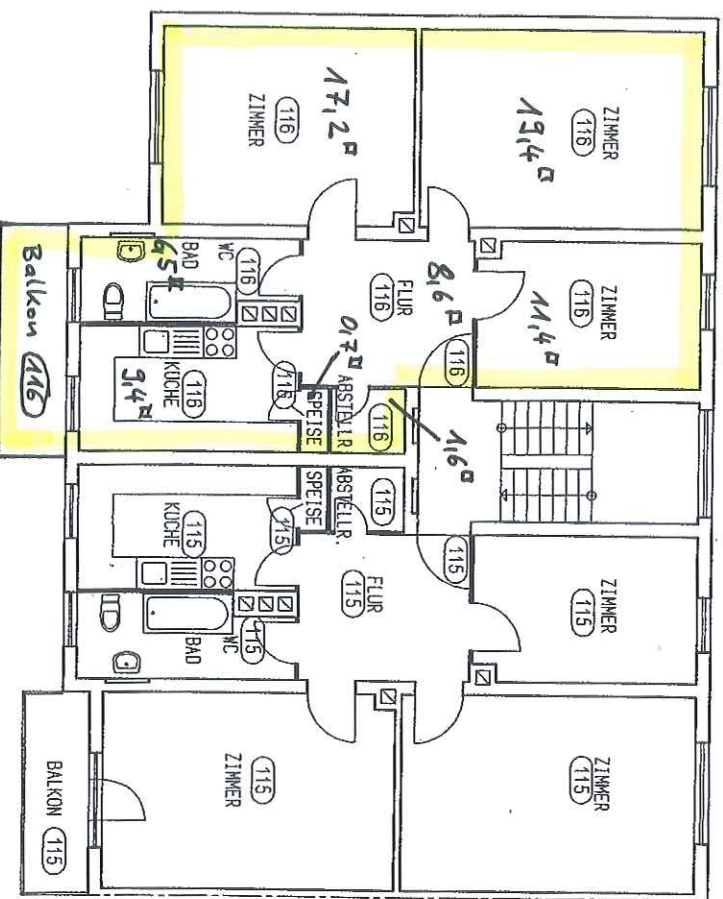
38 3.54 38
5 38 3.54 38
3.92

Wohnfläche

19,4	17,2	6,15	2,13	9,14	0,17	1,16	11,4	8,6
771,1 m ²								
- 2,13 m ² (3% Parkg abzug)								
<u>74,8 m²</u>								

1.25 4.635 11.5 5.25 25
25 4.05 5 3.175 5 4.175 25
25 4.05 5.56 1.3725 5.22 25

25 3.71 25 2.72 25 2.25 25 2.72 25 3.645 25
16.545



$4,6/2 = 2,3$

1.295 5.41 11.5 5.475 25
50 11.5

25 3.71 25 2.72 5 1.225 1.25 2.72 25 3.645 25
25 3.71 25 1.595 2.33 25 2.33 5 1.5925 3.645 25
3.96 8.69 3.895

3. OBERGESCHOSS