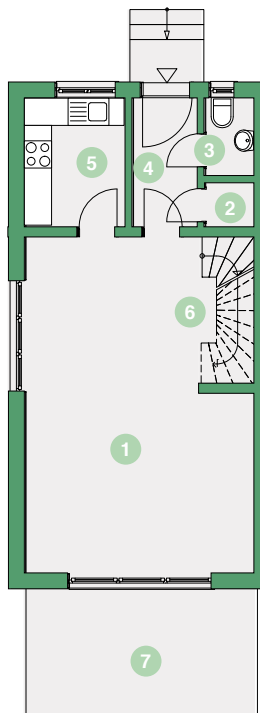
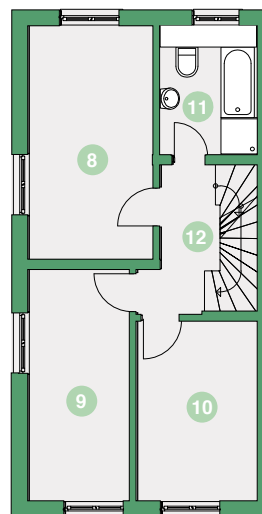


5-ZIMMER-REIHENENDHAUS

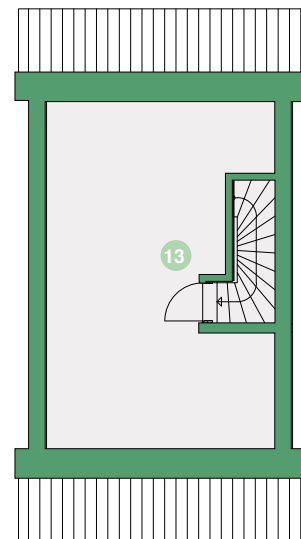
An den Leddigen 14,
14476 Potsdam



EG



OG



DG

1	Wohn-/Esszimmer / living/dining room	34,19 m ² / sqm
2	Technik / technical room	1,15 m ² / sqm
3	Küche / kitchen	6,46 m ² / sqm
4	Eingang / entrance	4,22 m ² / sqm
5	WC / WC	1,98 m ² / sqm
6	Treppe EG / stairs	1,19 m ² / sqm
7	Terrasse / terrace (50%)	7,14 m ² / sqm
8	Schlafzimmer / bedroom	14,44 m ² / sqm
9	Kinderzimmer / children's room 1	11,65 m ² / sqm
10	Kinderzimmer / children's room 2	10,81 m ² / sqm
11	Bad / bathroom	6,29 m ² / sqm
12	Flur OG / corridor	4,40 m ² / sqm
13	Dachzimmer / attic room	24,61 m ² / sqm

Gesamtfläche / living space/usable space **128,53 m² / sqm**

