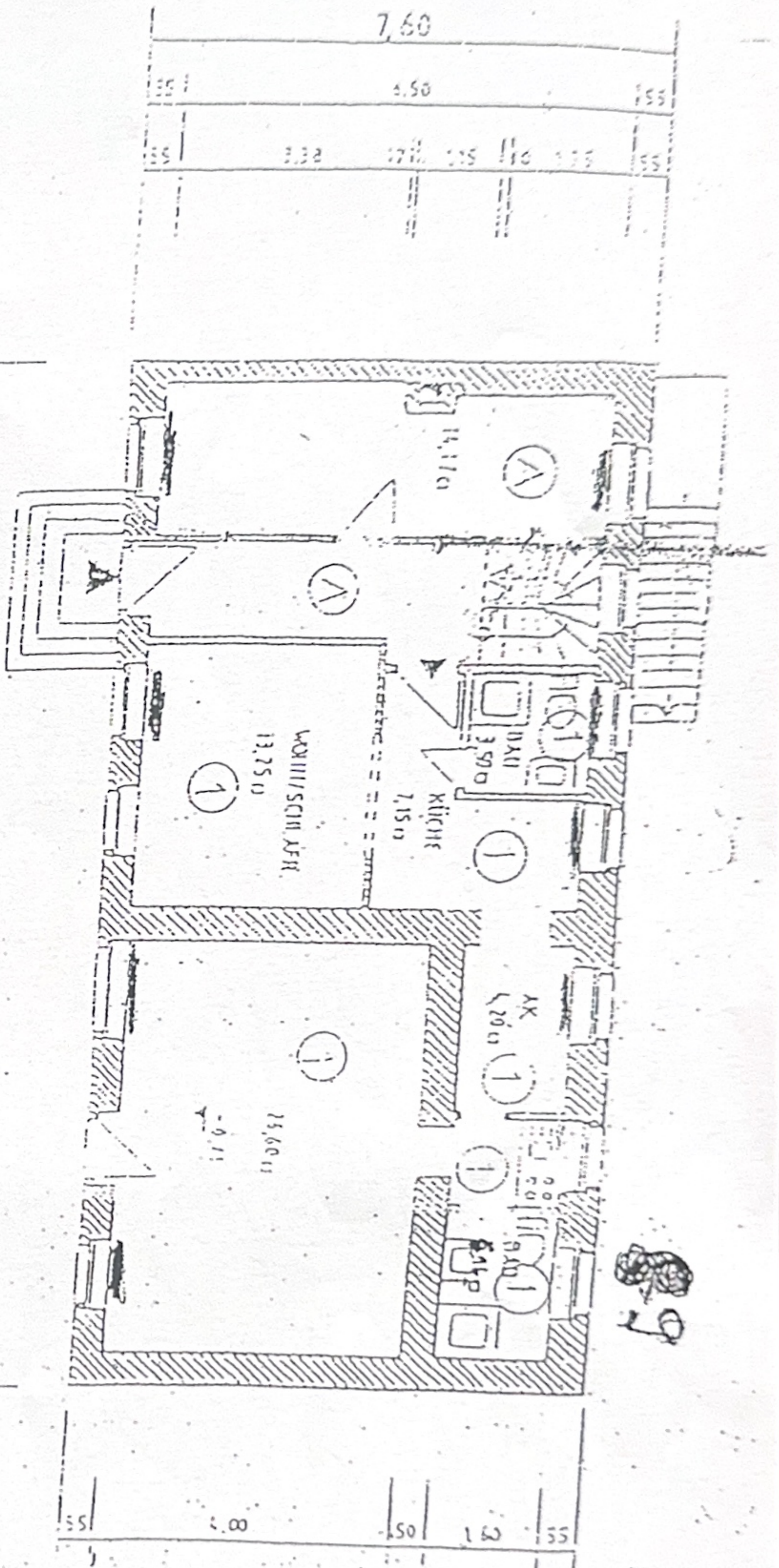


KELLERGESCHOSS

7 x 8 = St. u. 2 Aufgänge -



ERDGESCHOSS

8,80

16,10

6,80 x 4 -
25,60 m²
36 m²

6,40 x 1,6
38,40
10,240

6,75 x 4,2 m²

4,5 -

25,60

15,80

4,12 7 x 1,50

37 / 35 -

16,0 x 7,60

112,40

9660

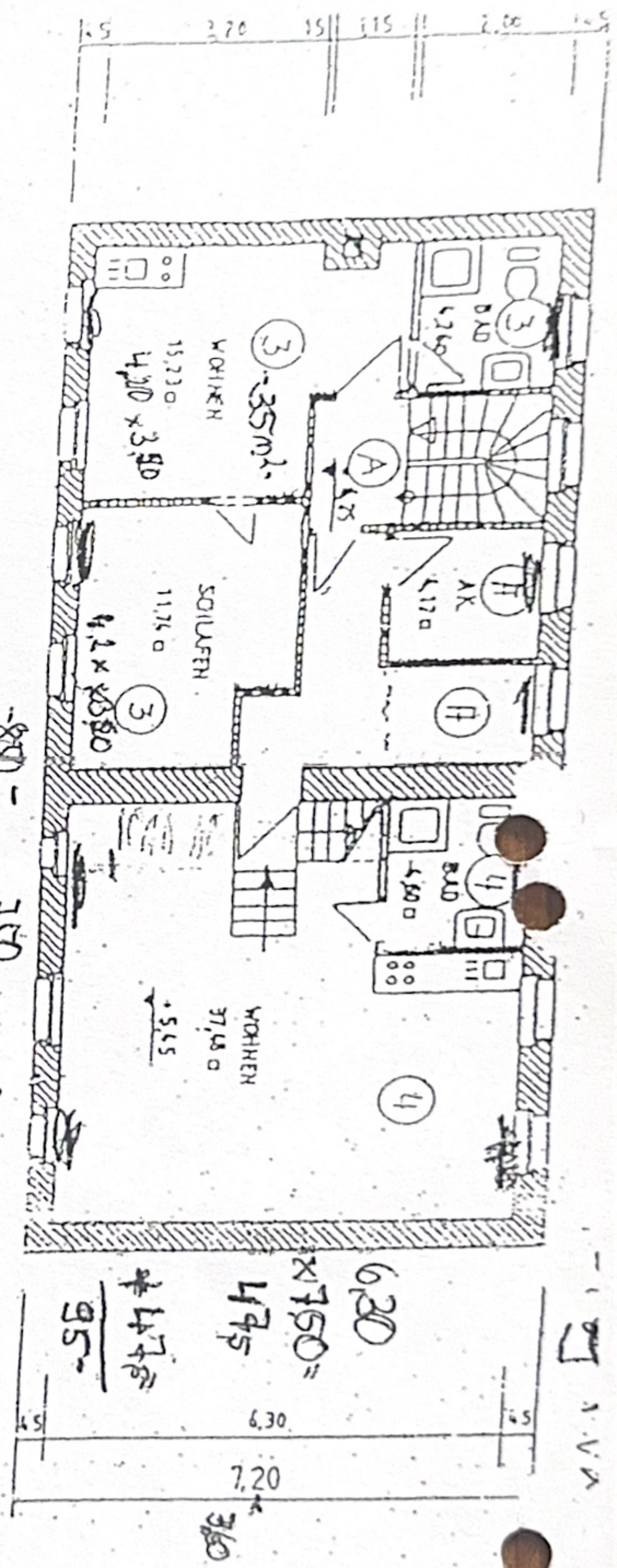
122,360 = 125 - / 20% m²

-043/320 882340 = 4,5

4,5

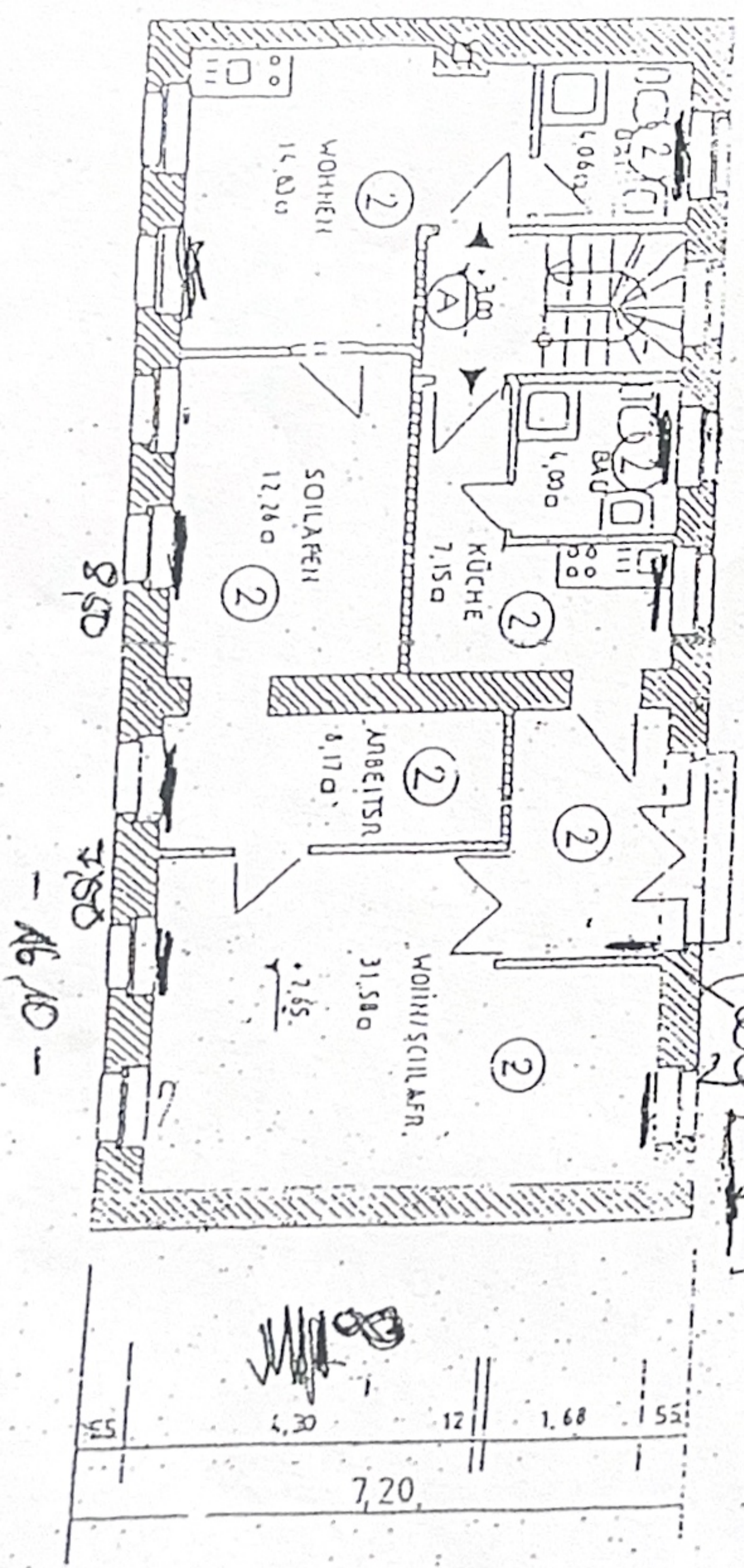
1/1

Projekt: Teilungsplan I
 Standort: Saden 49, 5449 Sanktburg
 Grundstück: Erdgeschoss u. Kellergeschoss
 Maßstab: 1:100
 Datum: 1970

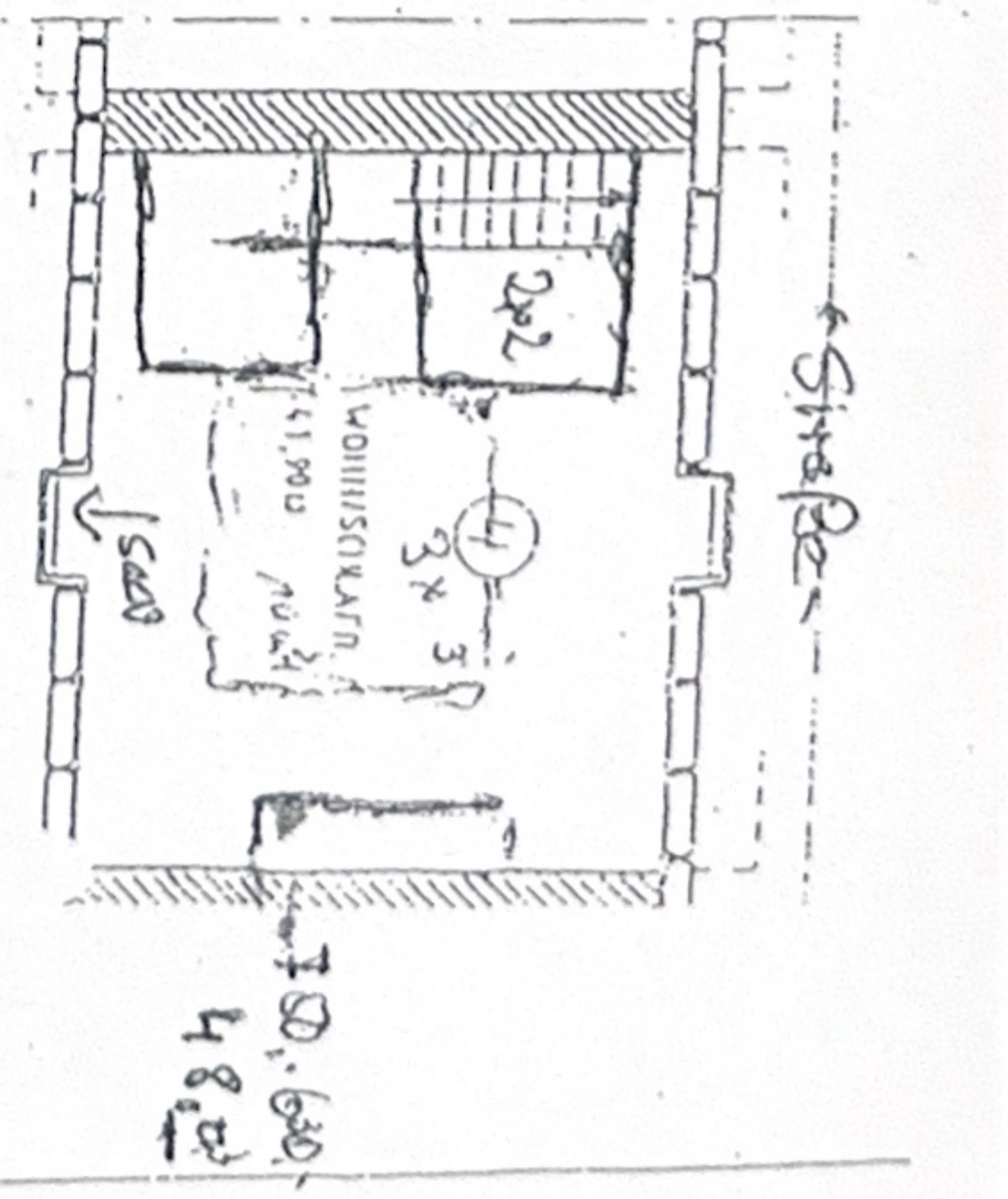


2. OBERGESCHOSS

← 8.50 x 16.10 → 54.426 m²-II



1. OBERGESCHOSS



DACHGESCHOSS

40.147 m² = 56 m² 560
6.5 x 6.5

25/26.1424