



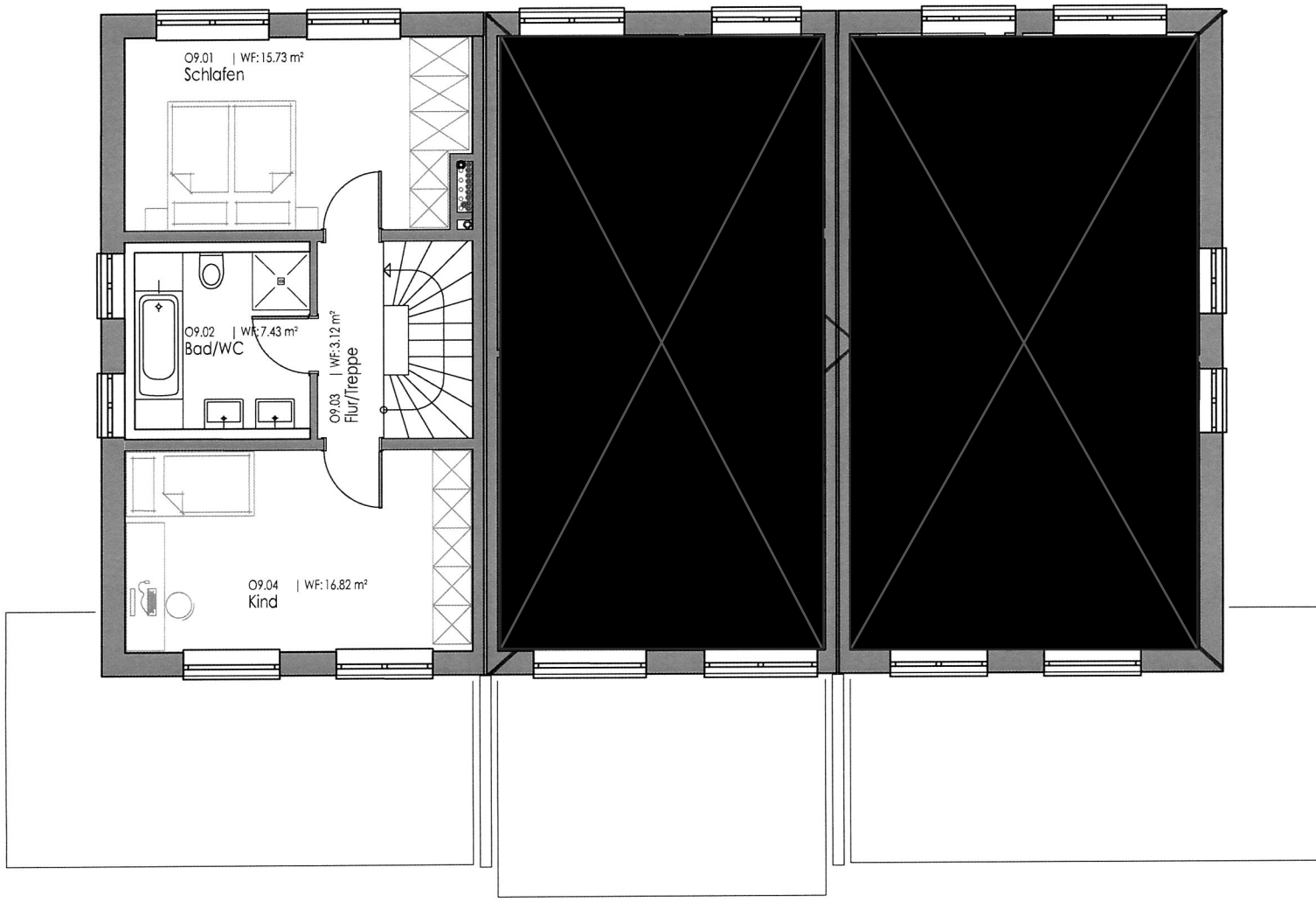
Haus A

Haus B

Haus C

O10.02 | WF: 5.32 m²
Bad/WC

O11.01 | WF: 6.52 m²
Bad/WC



O9.01 | WF: 15.73 m²
Schlafen

O9.02 | WF: 7.43 m²
Bad/WC

O9.03 | WF: 3.12 m²
Flur/Treppe

O9.04 | WF: 16.82 m²
Kind

Grundriss OG | 1:100

Stand: 18.10.2019