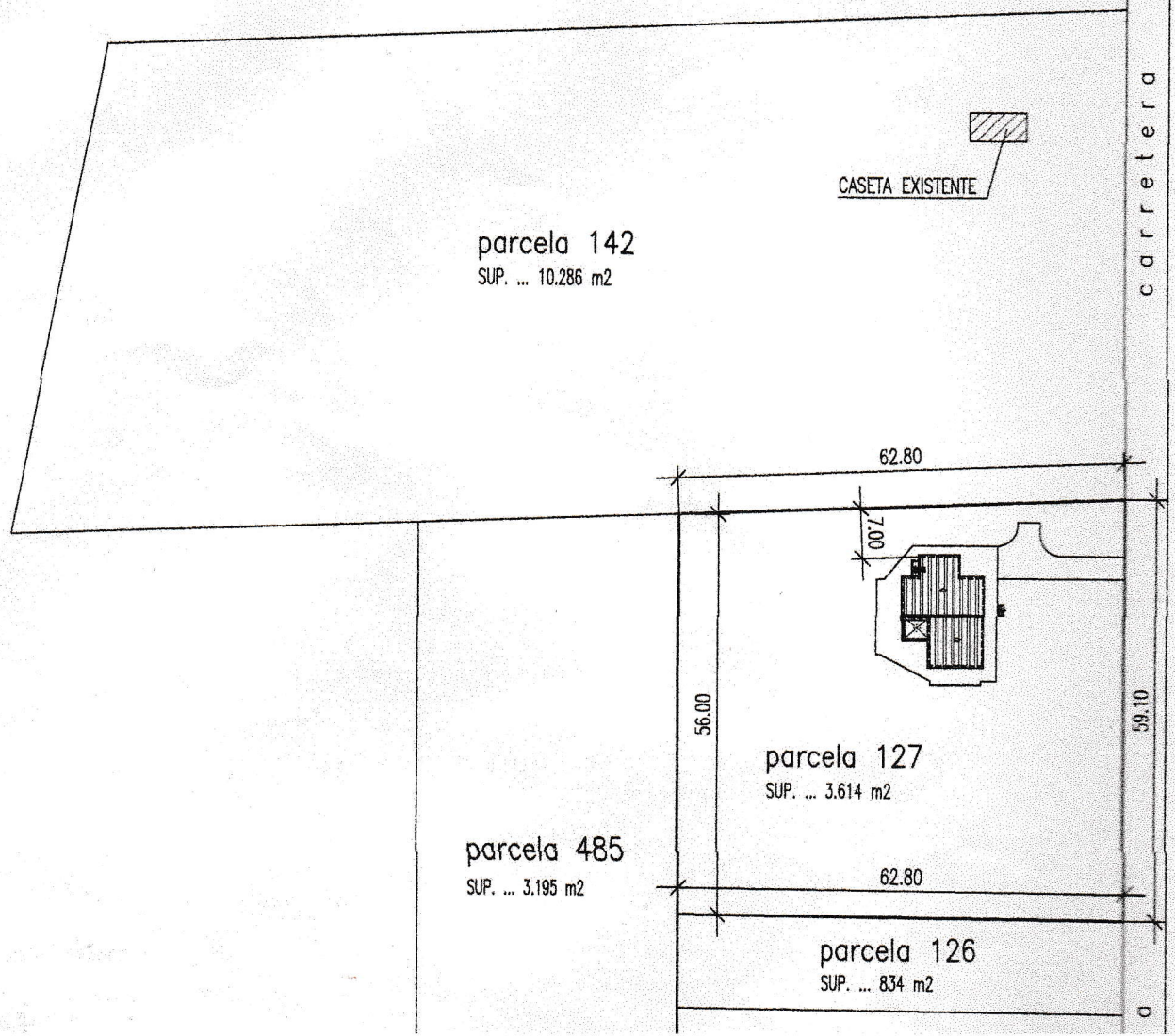


## ESTUDIO FORMACION NUCLEO POBLACION

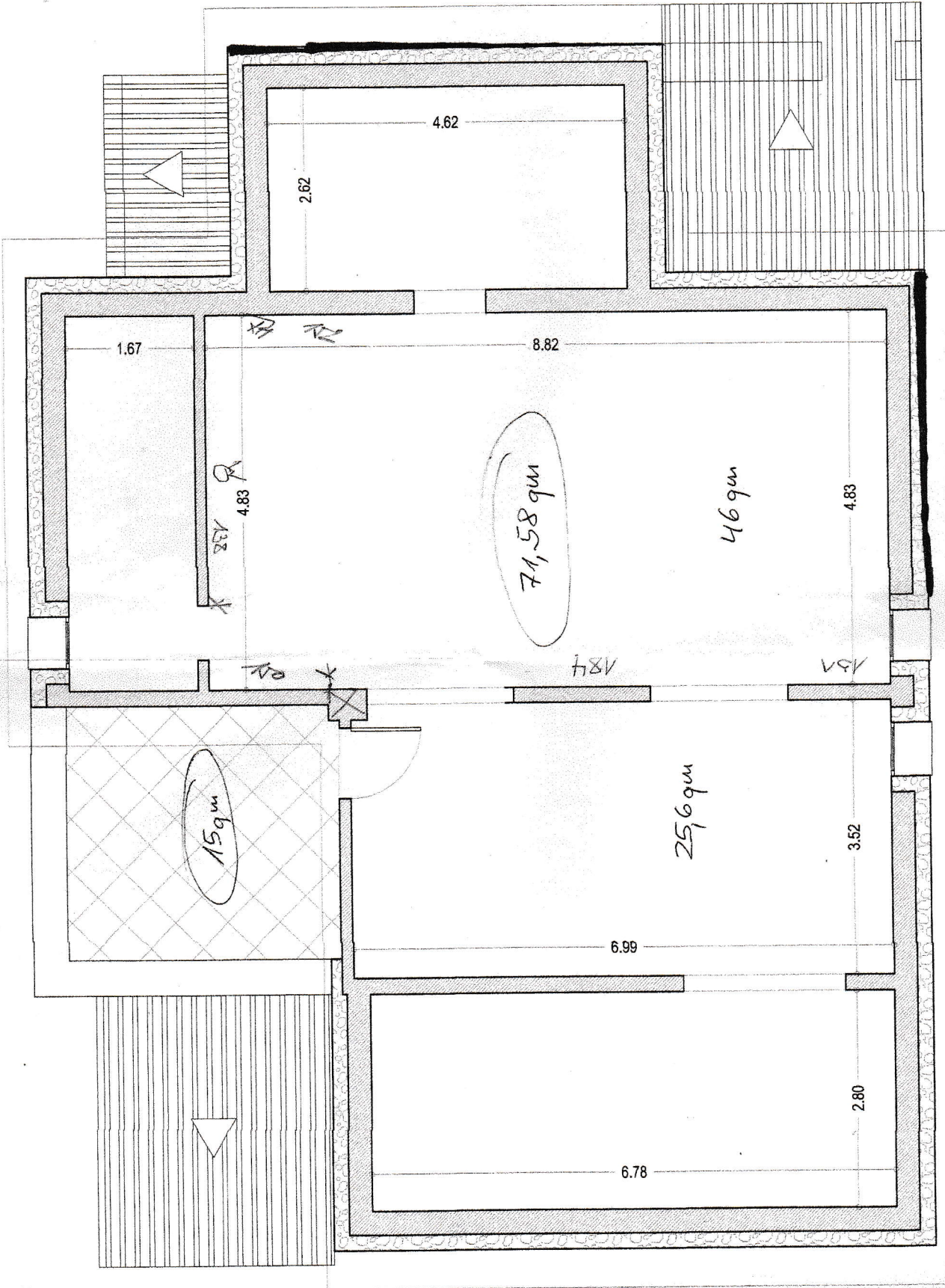
-parcela 142 .....	10.286 m <sup>2</sup>
-parcela 485 .....	3.195 m <sup>2</sup>
-parcela 126 .....	834 m <sup>2</sup>
-parcela 127 .....	3.614 m <sup>2</sup>
-parcela 124 .....	55.765 m <sup>2</sup>

TOTAL ..... 73.694 m<sup>2</sup>

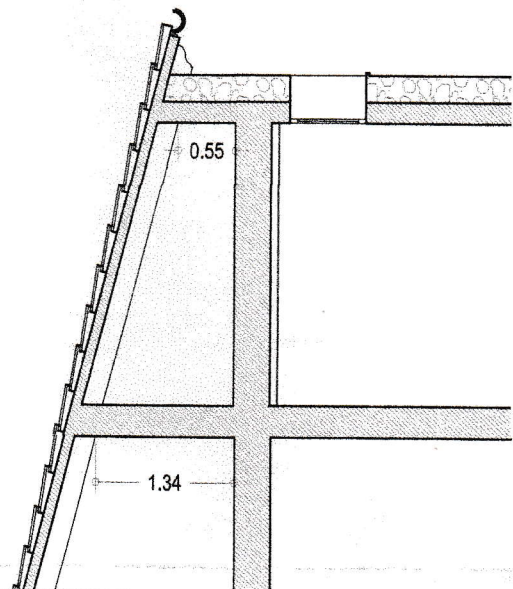
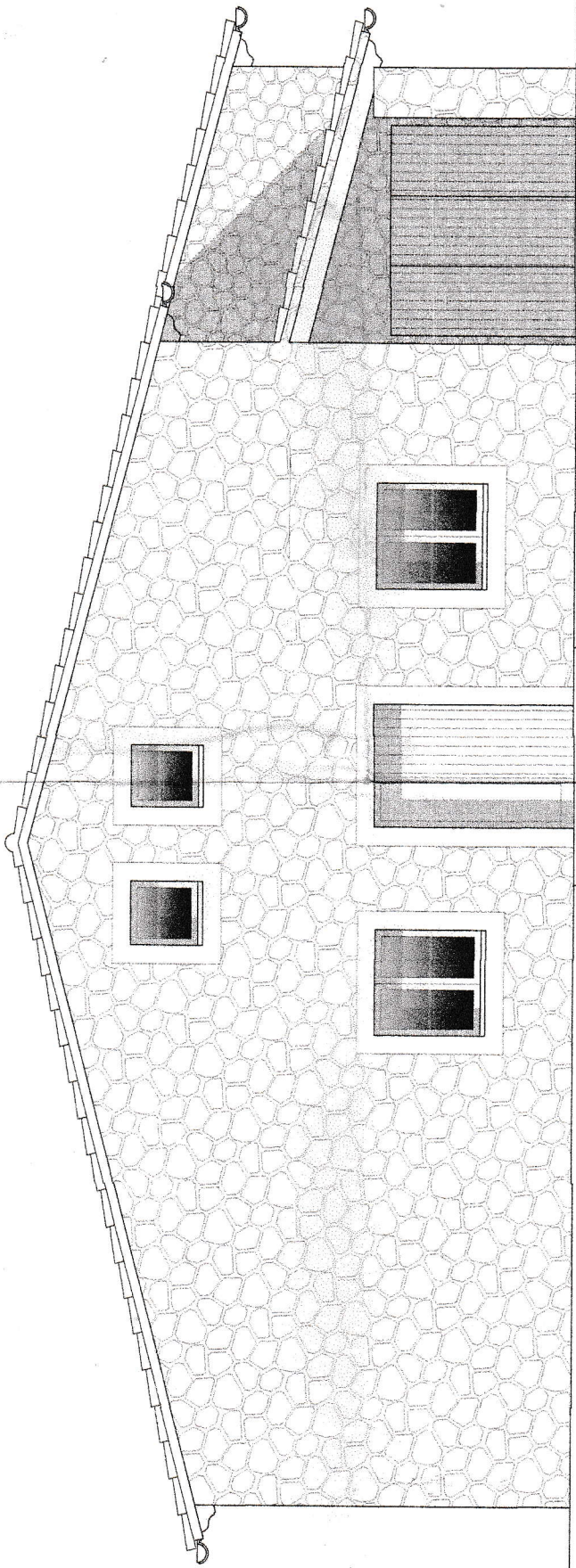
73.694 : 7000 = 10.52 > 3 viviendas  
(incluida la proyectada)

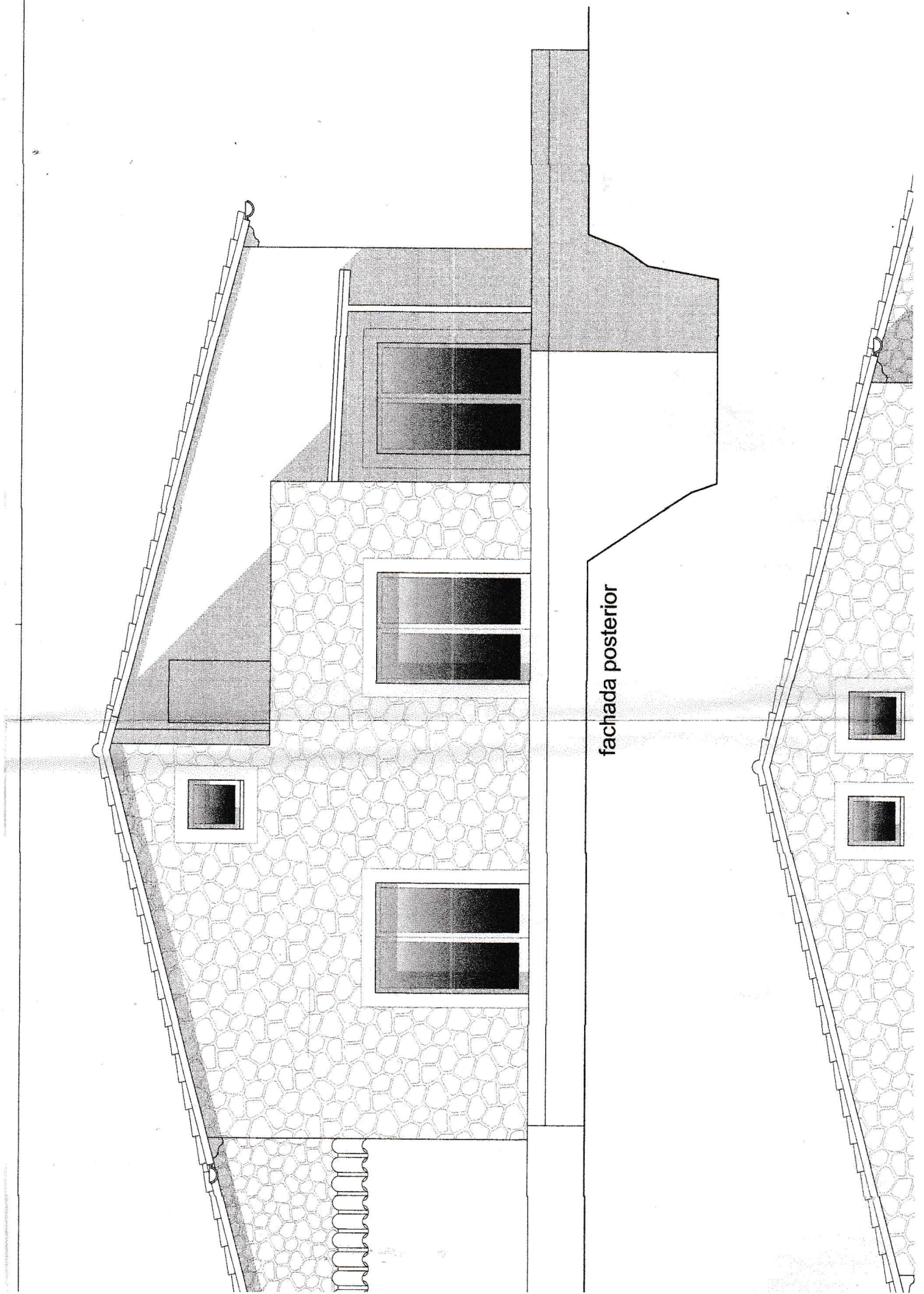






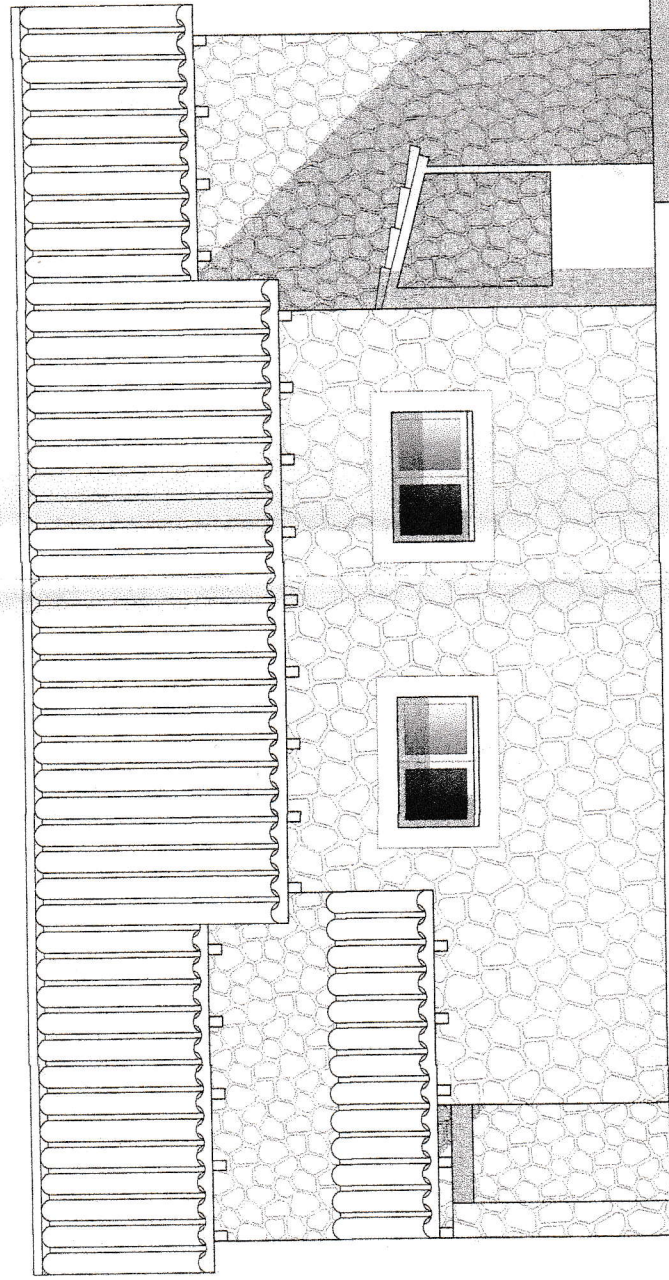
fachada principal



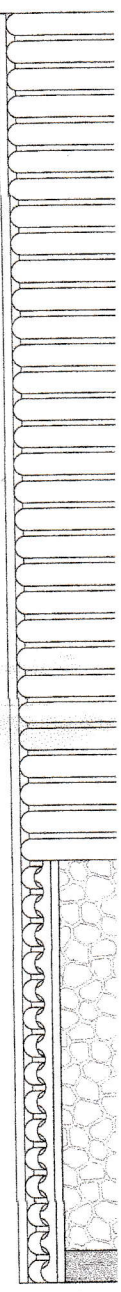


fachada posterior

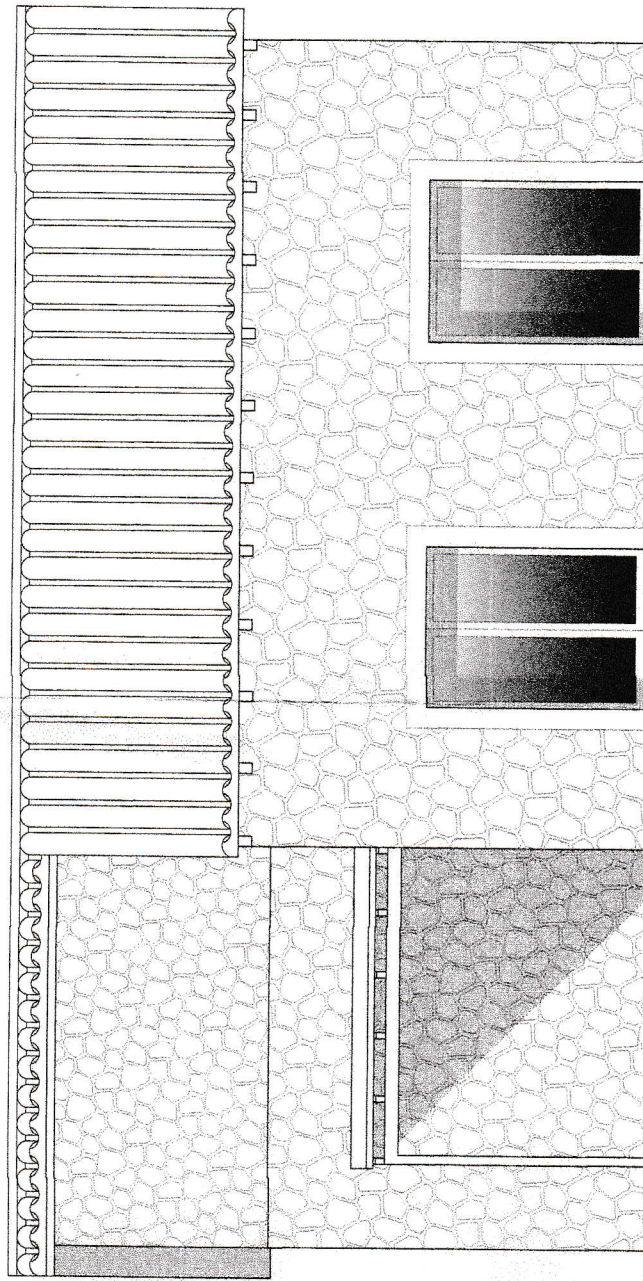
A4 ↔



fachada lateral derecha



A4 ↔



fachada lateral izquierda

