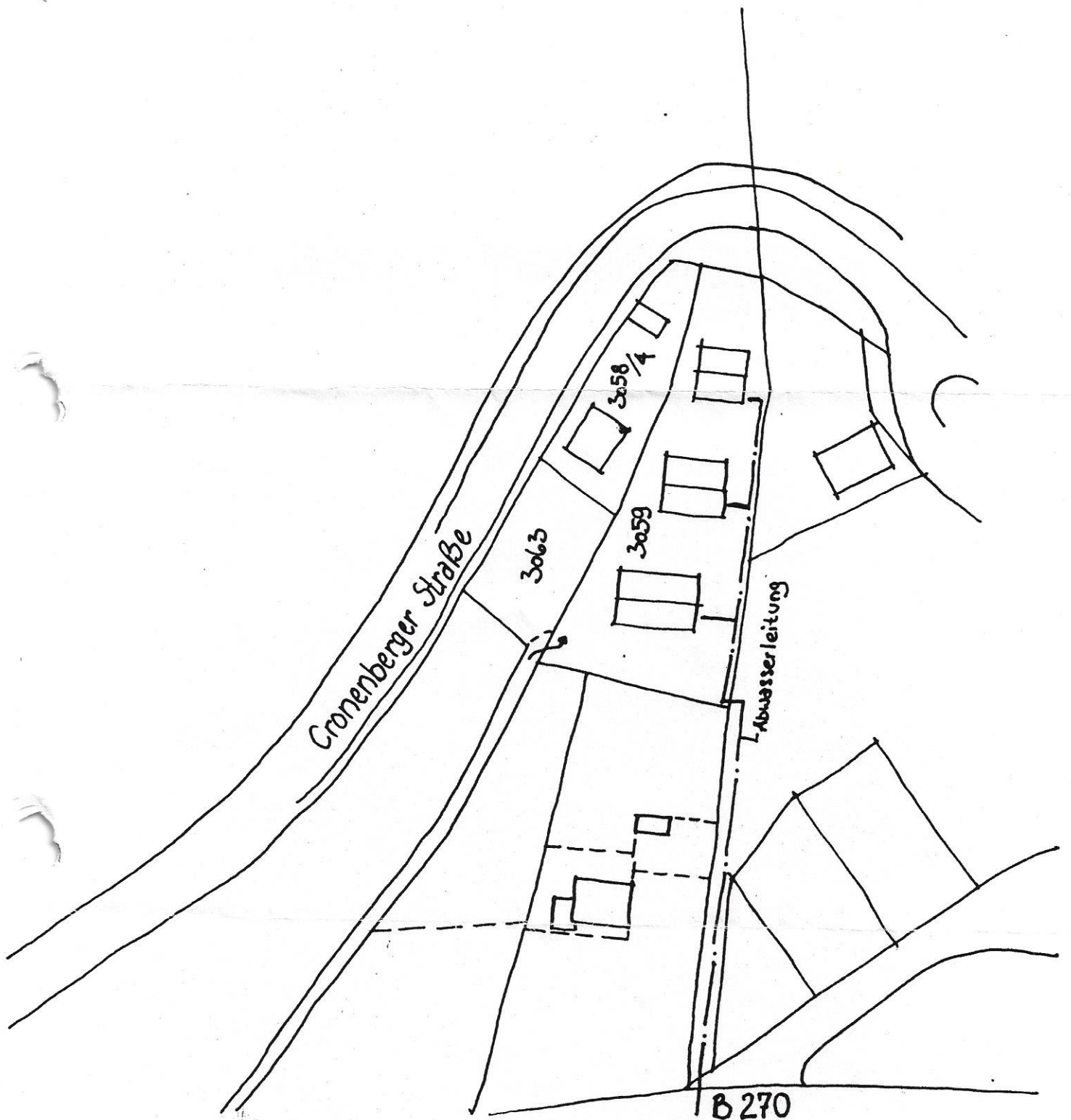


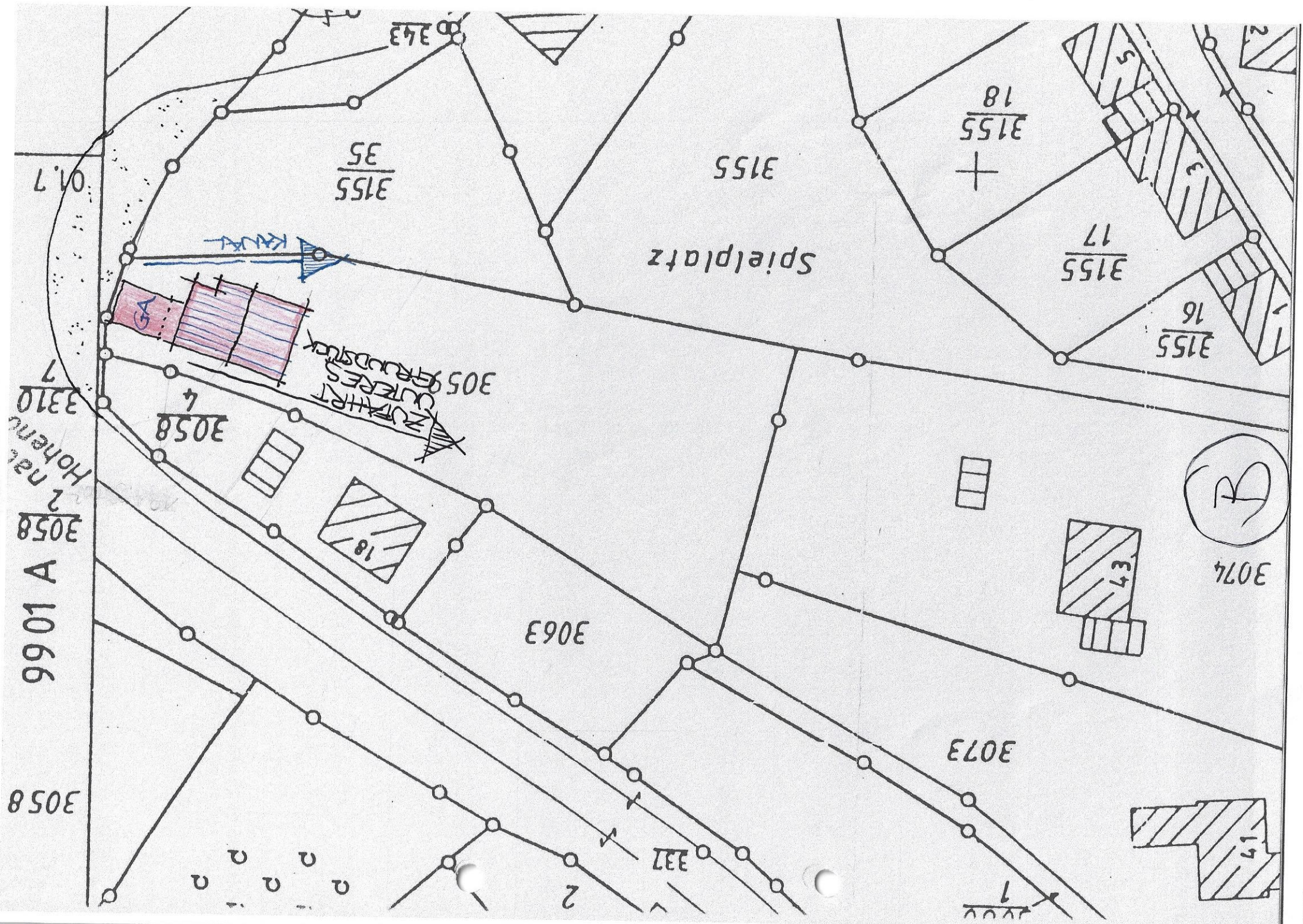
# MÖGLICHE BEBAUUNGSVARIANTEN



ENTWÄSSERUNG GRUNDSTÜCK WILLI RECH  
WÄLDERBUSCH PLANNR. 3059  
6758 LAUTERECKEN

M = 1:81000





Spielplatz

KURTES  
GRUNDSTÜCK  
ZUFAHRT

3058  
4

3063

3074

3073

3058  
2 nat  
Hohenu

9901 A

3058

01.7

3155

3155  
18

3155  
17

3155  
16

2  
2  
2  
2  
2  
2

337

1  
2000

3058

99 01 A

3058

2 nat  
Hohene

3310

7

01.7

NICHT RECHT  
JADELUSURGER 9  
GOS39 MAINHEIM



KANAL

~15.0

3058

4

3059

3155

35

LAGEPLAN SKIZZE M 1:500

3143

3063

Spielplatz

3155

3155

18

3155

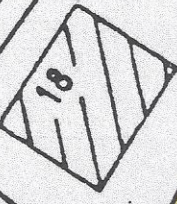
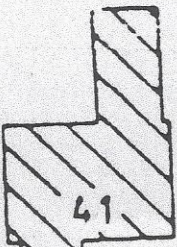
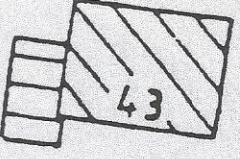
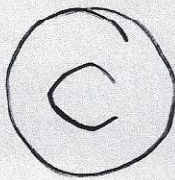
17

3155

16

3073

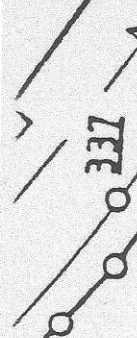
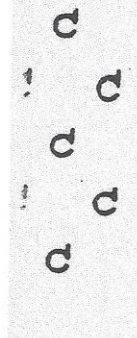
3074



2

337

1



3058

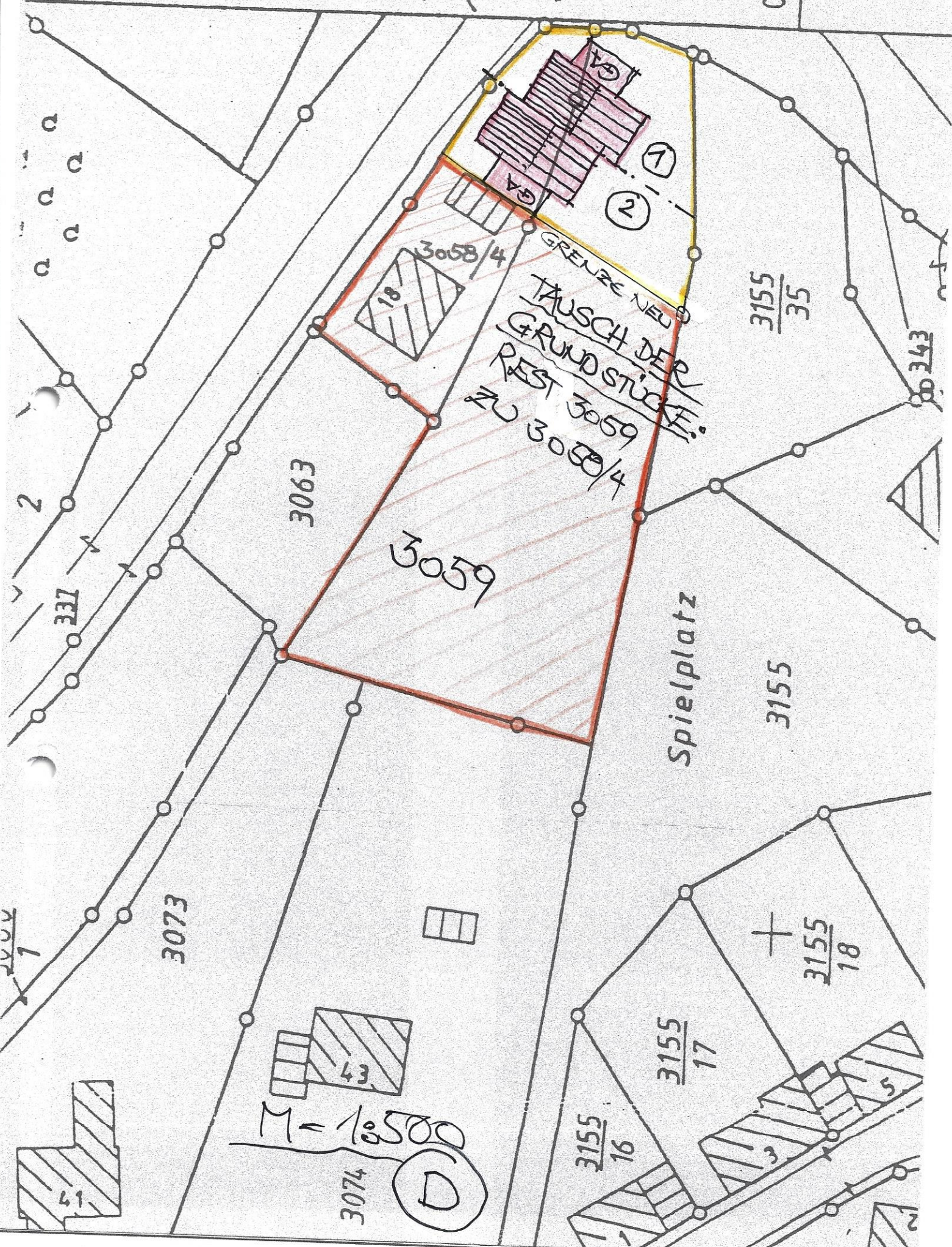
99 01 A

$\frac{3058}{2}$  nat

Hohene

$\frac{3310}{7}$

01.7



3063

3059

3058/4

GRENZE NEU  
TAUSCH DER  
GRUNDSTÜCKE!  
REST 3059  
ZU 3058/4

$\frac{3155}{35}$

Spielplatz

3155

3073

M = 18500

3074

(D)

$\frac{3155}{17}$

$\frac{3155}{18}$

$\frac{3155}{16}$

3155