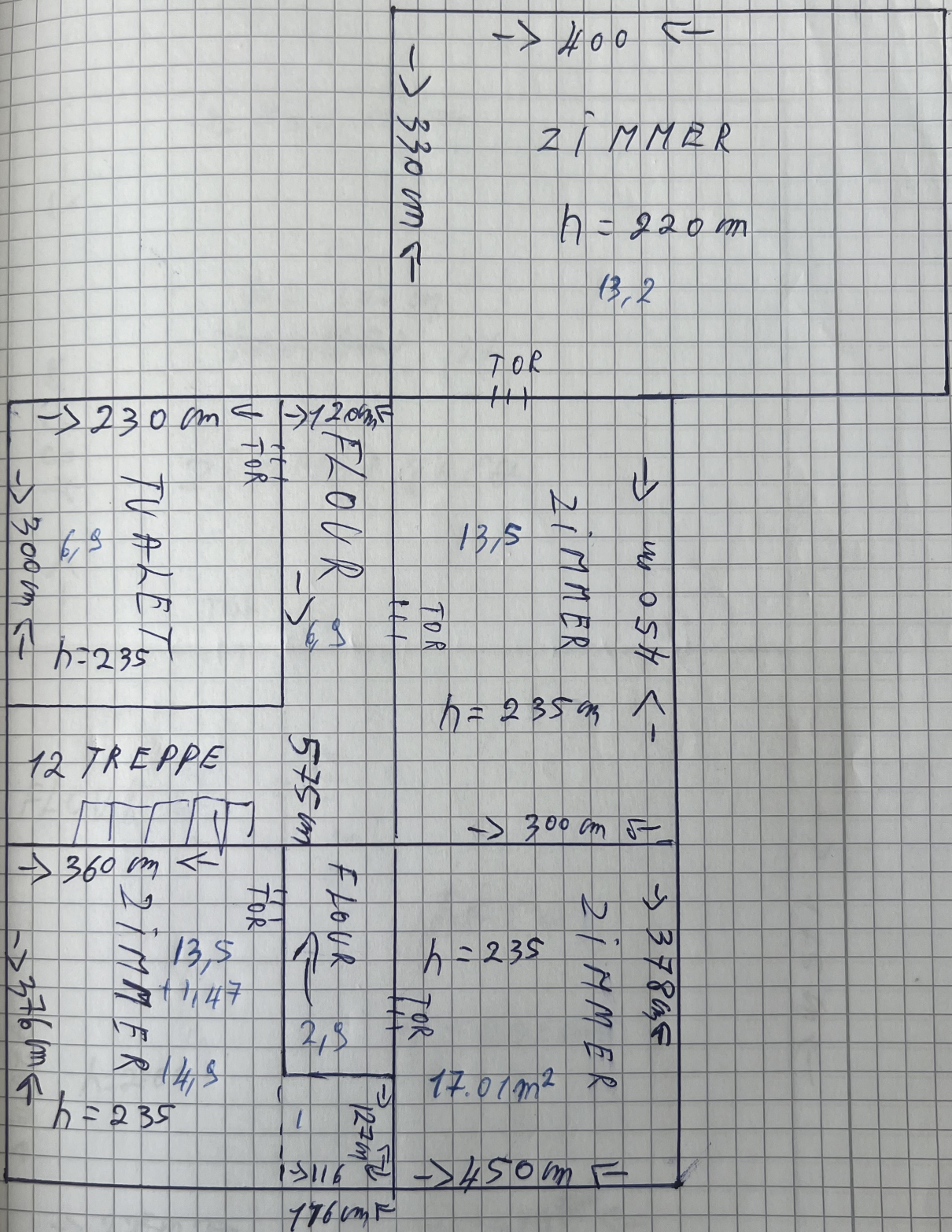


1





2

206



→ 560 cm ←

↓  
480 cm  
↑

$h = 200 \text{ cm}$   
 ~~$h = 200$~~  27

ZIMMER DACH

TOP

FLOOR 2

TOP  
135

DACH

$h = 200 \text{ cm}$

→ 220 cm ←

$h = 200 \text{ cm}$

→ 175 cm ←

→ 225 cm ←

→ 269 cm ←  
~~269 cm~~

DACH