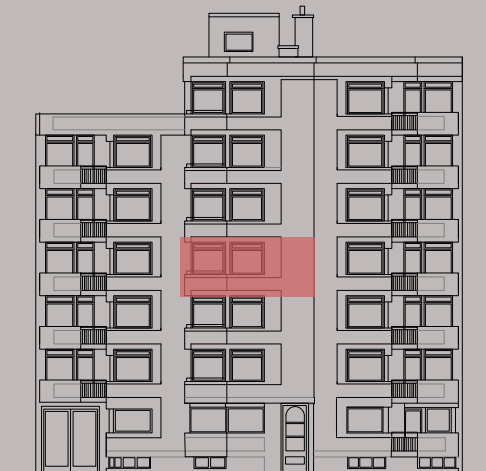


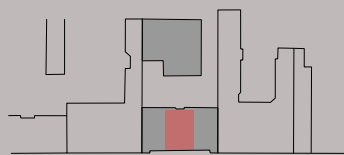
VORDERHAUS 3.OBERGESCHOSS

WE 10/3.OBERGESCHOSS

| | |
|---------------|----------------------------|
| Küche | 4.34 m ² |
| Zimmer | 24.50 m ² |
| Bad | 3.96 m ² |
| Flur | 4.89 m ² |
| Balkon | 2.02 m ² |
| Gesamt | 40.16 m² |



Straßenansicht



Eislebener Straße

Lageplan

