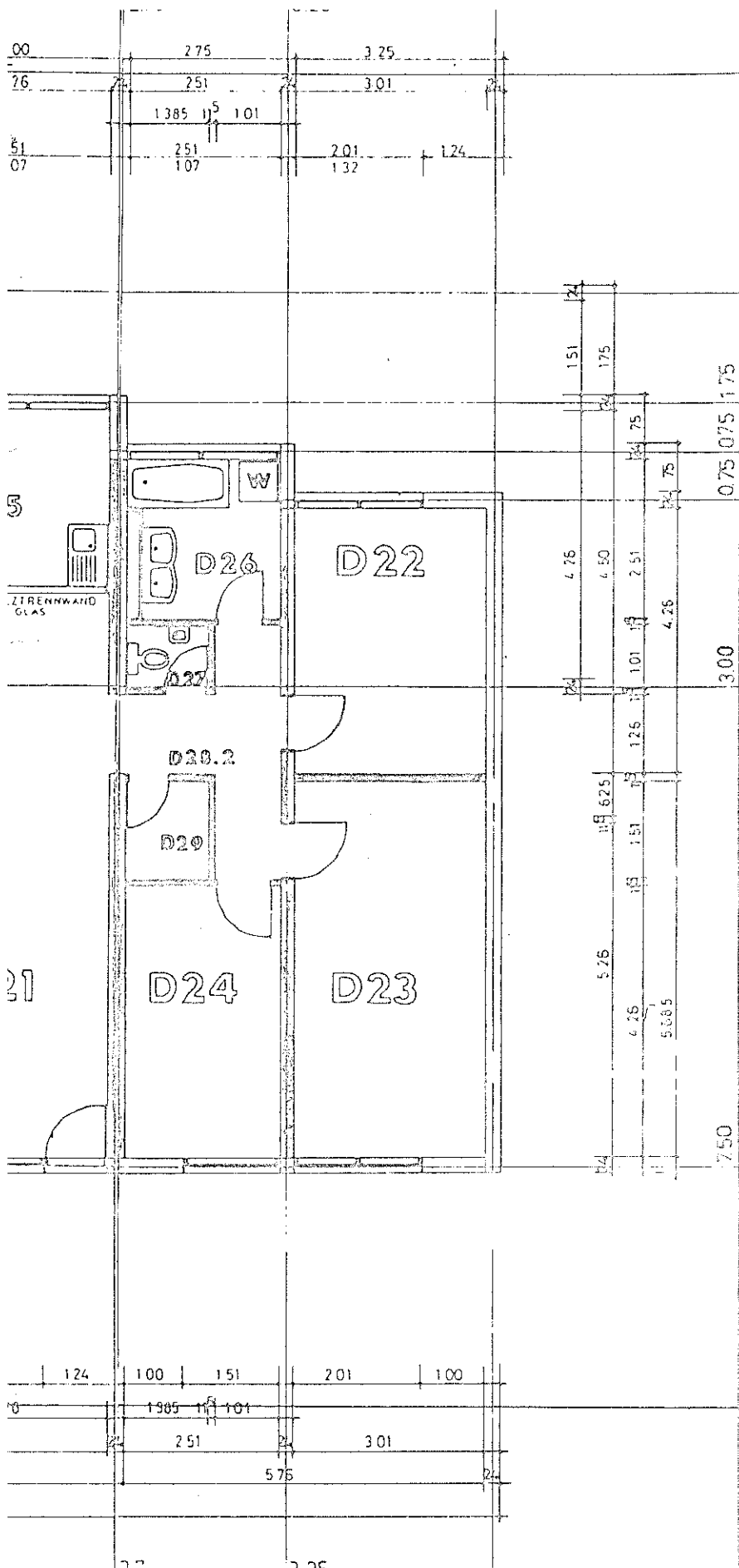
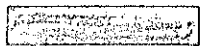

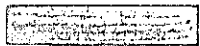
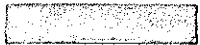


10.74

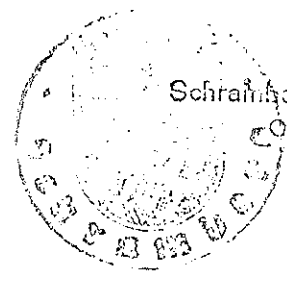
Miet-Wohnung  
Nr. 1

21.24



-  STAHLBETON
-  GISOTON
-  Hbl
-  HLZ

	RAUM	QM	UMFG	BELAG	OKR	OKF
21	WOHNEN .ESSEN					
22	ELTERN					
23	KIND					
24	KIND					
25	KUCHE					
26	BAD					
27	WC					
28.1	GARDEROBE					
28.2	FLUR					
29	ABSTELL					

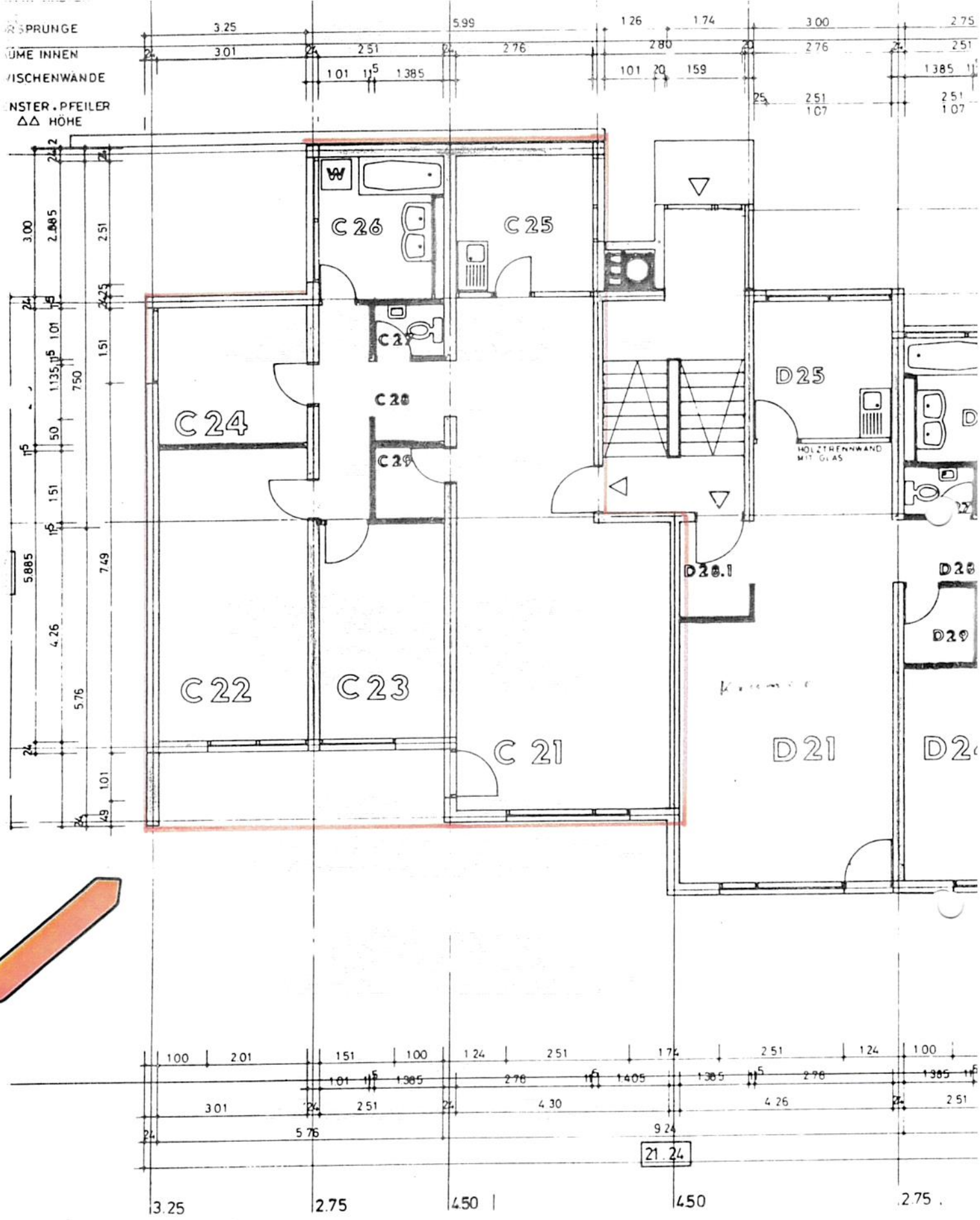


Schramberg, den 11. Okt. 1973  
 Oberbürgermeister

1. Stellvertreter

*[Handwritten signature]*

GEKLEINERT	DATUM	NAME	BEFUGT
SWB		HETTICH	
ECKENHOF M 102	32 BLOCK C/D	Dr.-Helmut-Jung- hans-Str. 83	
PROJEKT	PLAN	EDENE 2	
MASSSTAB 1:100	DATUM	Schramberger Wohnungsbau G.m.b.H.	





1:100

Block C-2

Dr.-Helmut-Junghans-Str. 83

Zufahrt zur Feuerwehr

Tiergarage  
mit Erddeckung  
im Bau

Fläche 5,0a

Fläche 11,5a

Fläche 7,2a

Fläche 7,7a

Fläche 6,2a

Fläche 1,6a

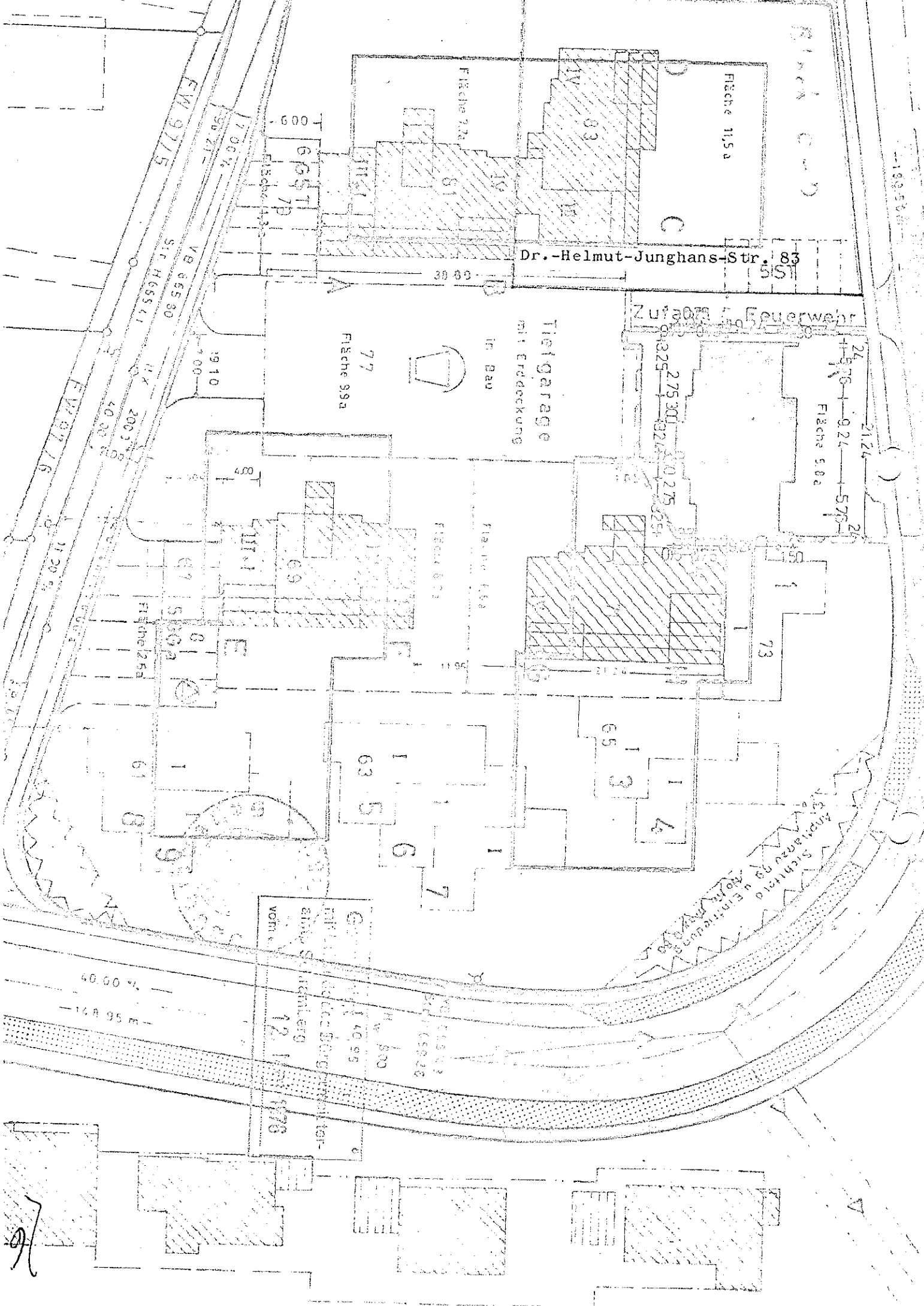
Fläche 2,6a

Fläche 5,80a

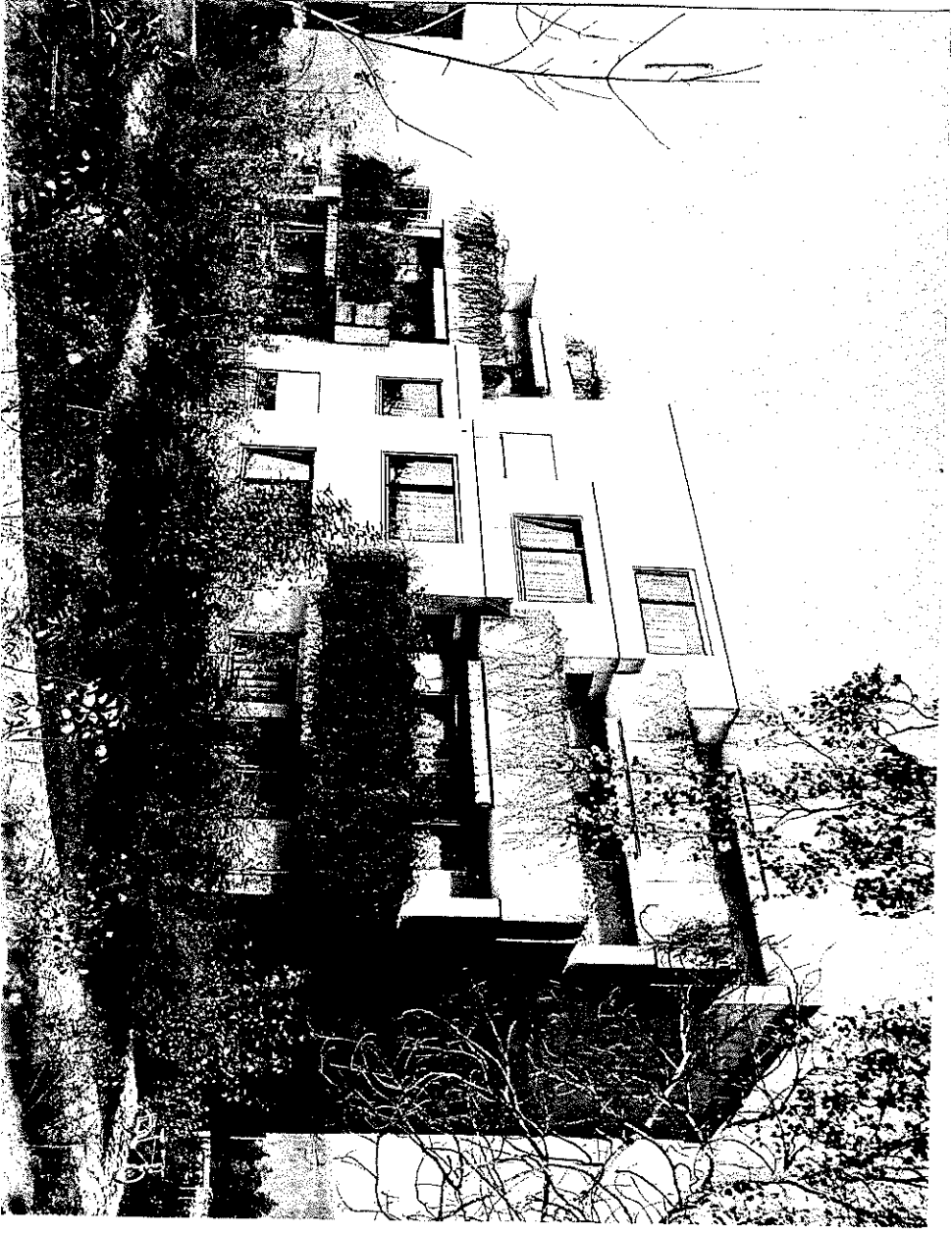
Fläche 1,26a

Gepl. 1:100  
12.11.1978  
Architekturbüro  
S. J. J. J.  
Vorb.

Sichtfeld  
Anpassung an  
Anlage



Handwritten signature or initials.



J.R. 10457

19