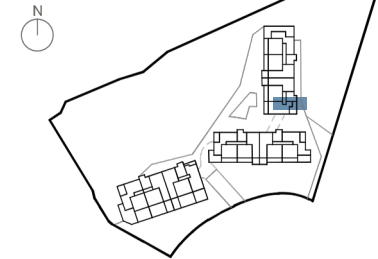


LOCATION



APPROXIMATE AREAS

Entrance	3,59 m ²
Living Room-Kitchen	30,73 m ²
Hall	1,92 m ²
Master Bedroom	13,78 m ²
Bedroom 2	11,17 m ²
Bedroom 3	10,60 m ²
Master Bathroom	3,84 m ²
Bathroom 2	3,66 m ²
Internal Useful Floor Area	79,29 m²
Covered Terrace	18,06 m ²
Uncovered Terrace	23,82 m ²
External Useful Floor Area	41,88 m²

Internal built area	92,84 m²
Internal gross area including PP.	107,99 m²
Common Area*	118,79 m²

Regarding Decreto BOJA 218/2005	
Total useful floor area	87,22 m²
Total built area	118,79 m²

*Terraces are not included

Apartment 030 - BlockB2 - Portal P3 - FloorPB0 - DoorC

The information contained may be modified during the course of the work execution due to technical or legal requirements, without implying any reduction in the overall level of qualities. The access steps to the dwelling and exits to courtyards may be altered according to the level of the streets and it is up to the D.F. to set the criteria.