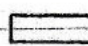


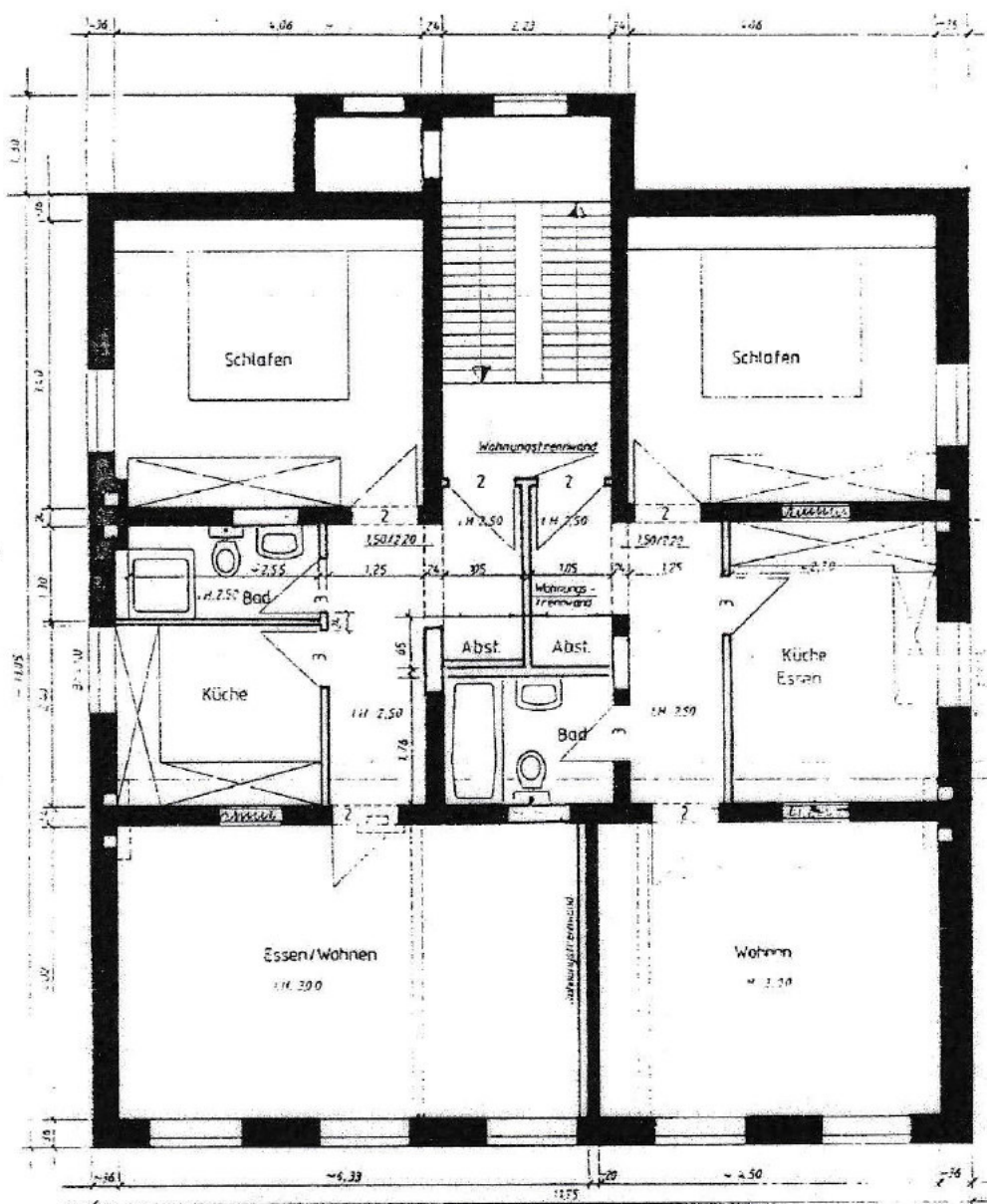
Türgrößen
 2 = 0,88⁵ / 2,01
 3 = 0,76 / 2,01
 4 = 0,63⁵ / 2,01

 = neues Mauerwerk

Erdgeschoss

Mehrfamilienhaus

Maßstab 1:100




Türgrößen

2 = 0,88⁵ / 2,01

3 = 0,76 / 2,01

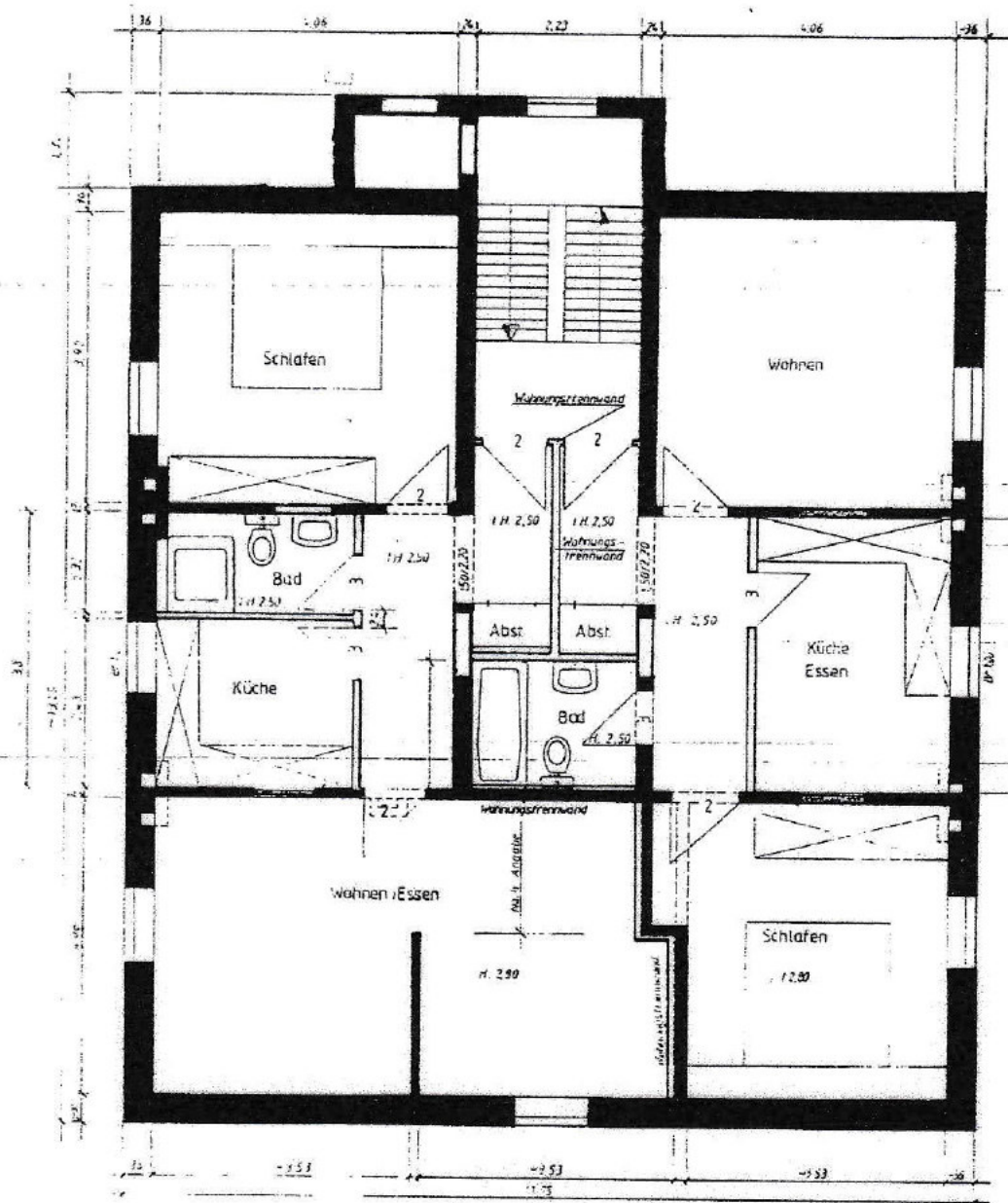
4 = 0,63⁵ / 2,01

 = neues Mauerwerk

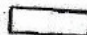
1. Obergeschoss

Mehrfamilienhaus

Maßstab 1:100



Türgrößen
 2 = 0,88 / 2,01
 3 = 0,76 / 2,01
 4 = 0,63 / 2,01

 = neues Mauerwerk

Dachgeschoss

Mehrfamilienhaus

Maßstab 1:100