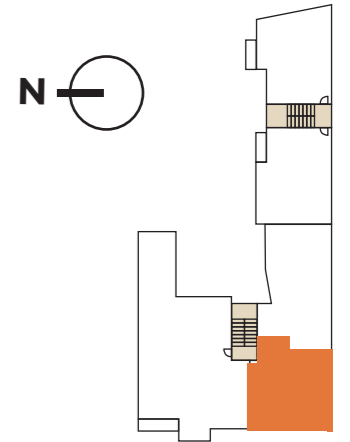


2-Raum-Gewerbe

2-ROOM-COMMERCIAL UNIT

VORDERHAUS, EG LINKS, CA. 65,57 m²

FRONT BUILDING, GROUND FLOOR RIGHT, CA. 65,57 sqm



GE 03

APT. 03
ELBERFELDER STRASSE 30
10555 BERLIN

