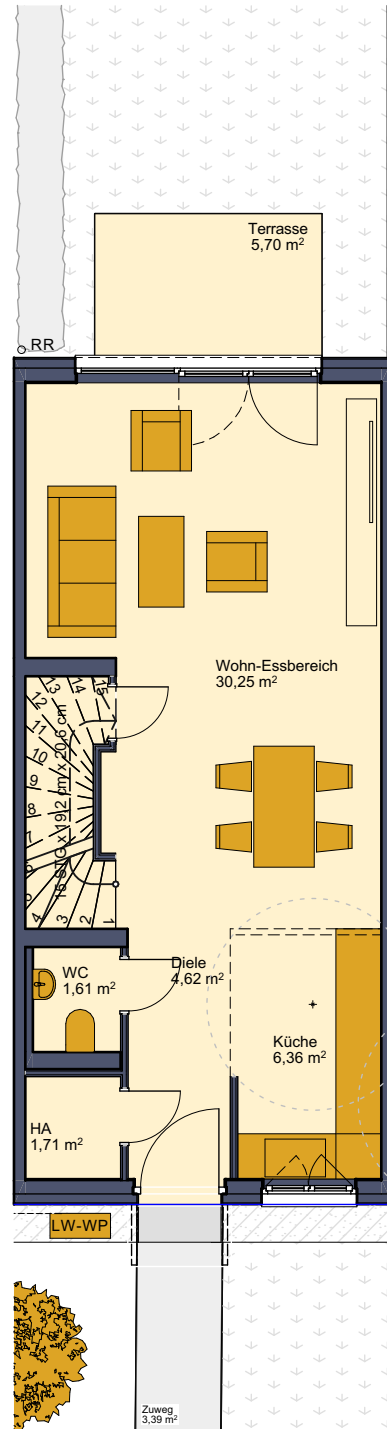
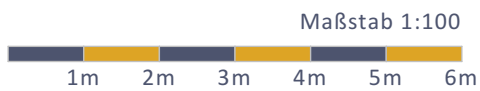


Haus 6.3 Erdgeschoss

Diele	4,62
HA	1,71
WC	1,61
Küche	6,36
Wohnen	30,25
Terrasse	2,85
	47,40

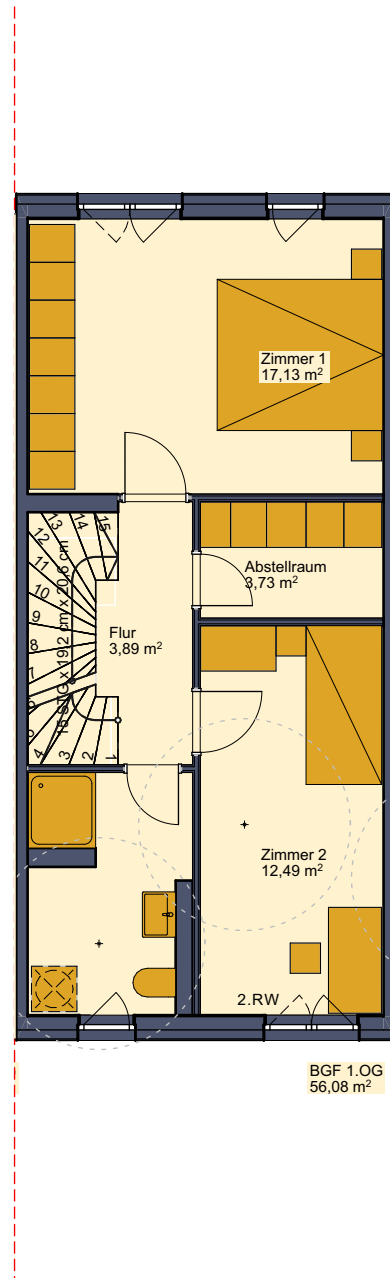


Haus 6.3 Obergeschoss

Flur	3,89
Abstellraum	3,73
Zimmer 1	17,13
Zimmer 2	12,49
Bad	6,78
	44,02



Maßstab 1:100



Haus 6.3

Dachgeschoss

Studio 31,77



Maßstab 1:100

