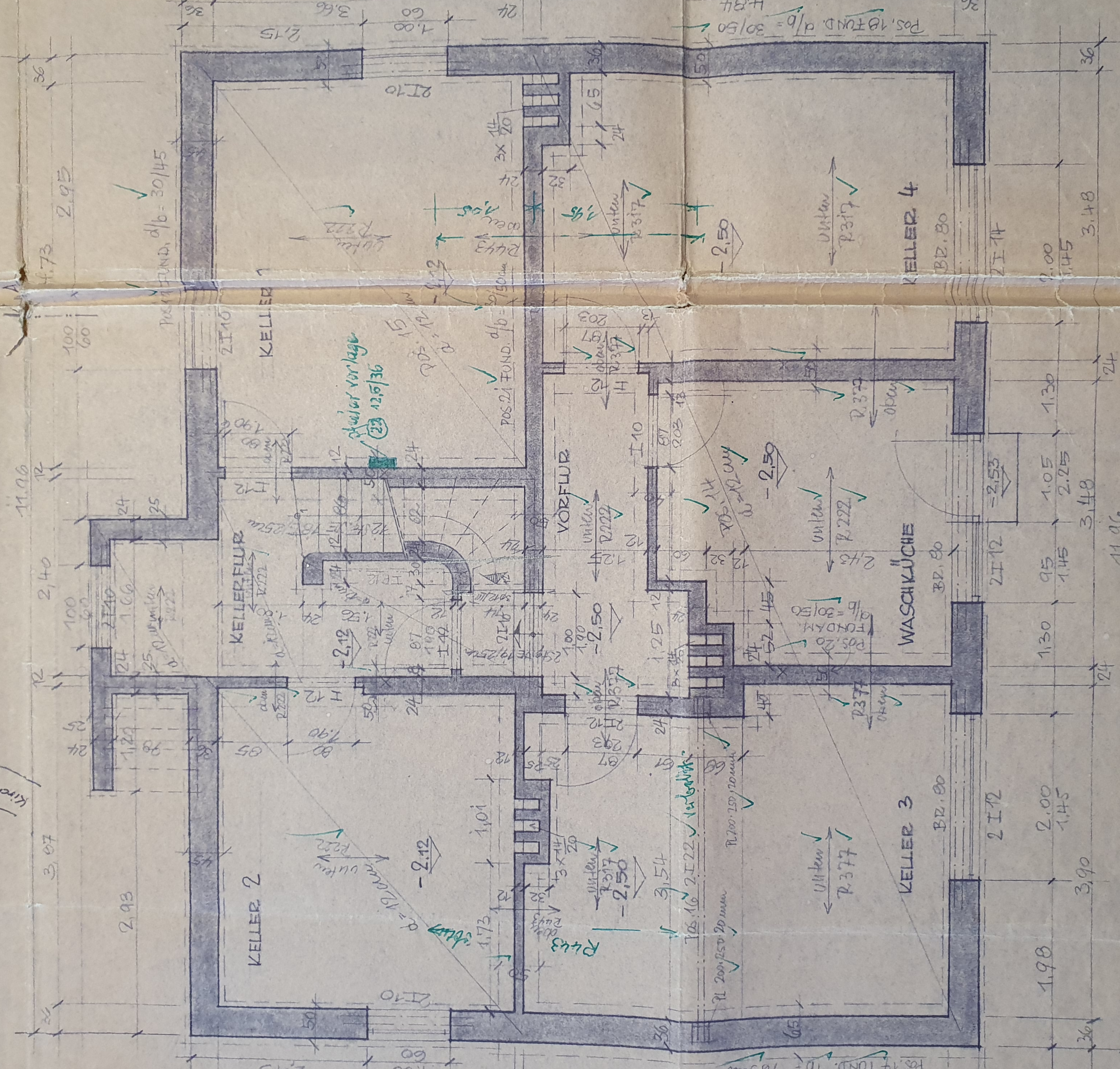
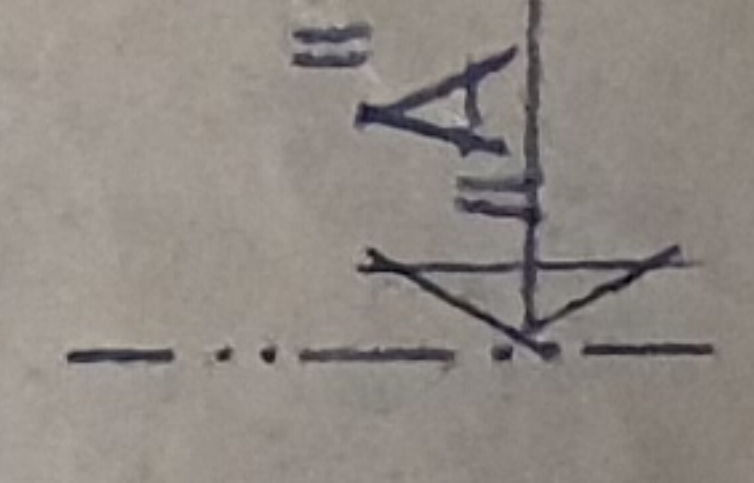


Kirchweiser Eldedeich



KELLER 1:50



-2.60

FUNDAMENTE B 120 / *beton, B 160*
 KELLERDECKEN B 225 / *BSTON, IV DV*
 MAUERWERK A 150 / *MGR, III*
 PROFILTRÄGER ST 37

BODENDRÜCKUNG MAX. 1,5 kg/cm²