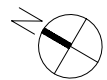
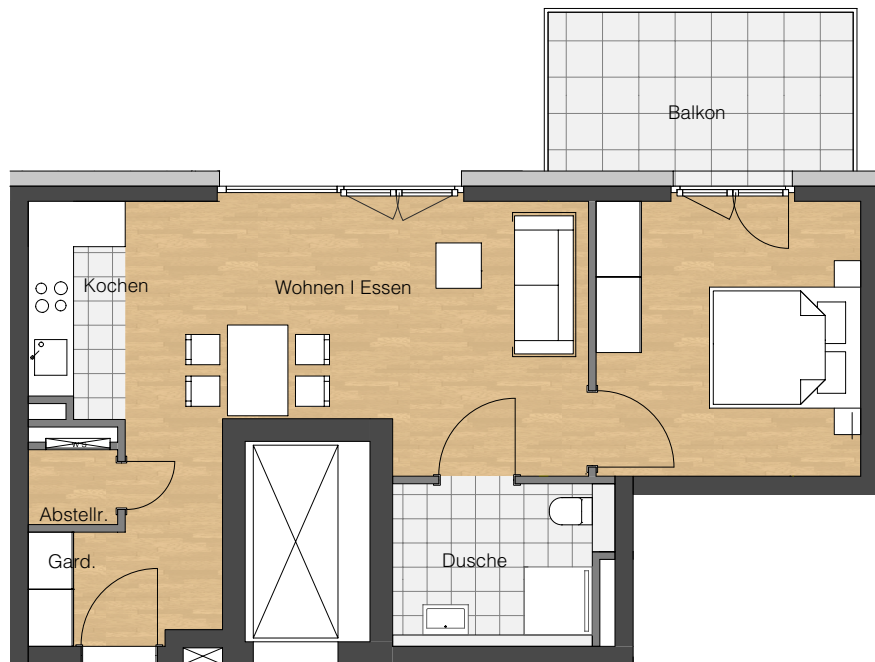


**Wohnung 25** 3.OG  
2 Zimmer



unverbindliche Illustrationen , Masstab ca 1:100

### Wohnflächen

Wohnen   Essen   Kochen	28,66 m <sup>2</sup>
Schlafen	12,53 m <sup>2</sup>
Dusche	5,86 m <sup>2</sup>
Abstellr	1,04 m <sup>2</sup>
Balkon 1/4	2,20 m <sup>2</sup>
<b>Summe</b>	<b>50,29 m<sup>2</sup></b>

