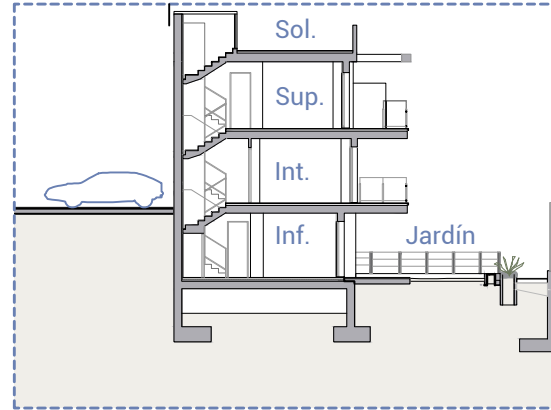


VIVIENDA HOUSE

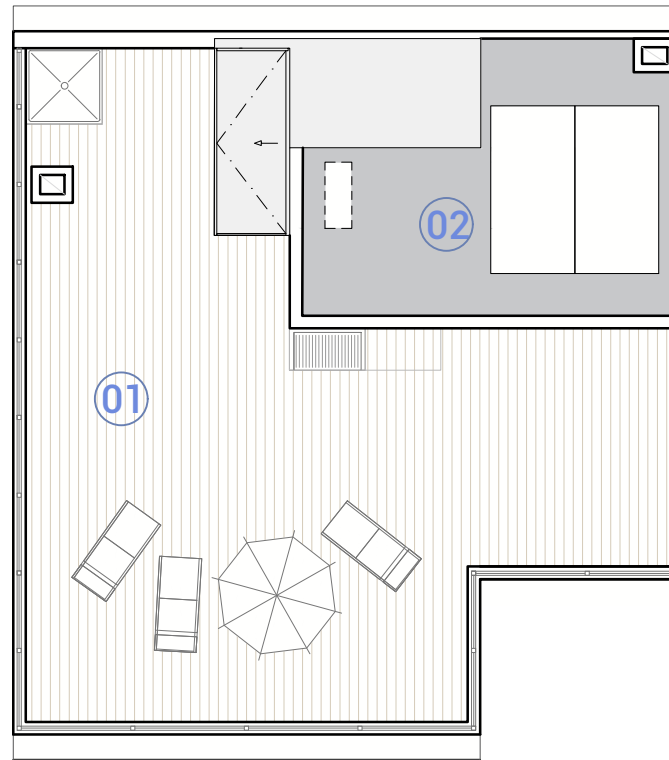
28

Plantas Floors | Solarium Superior

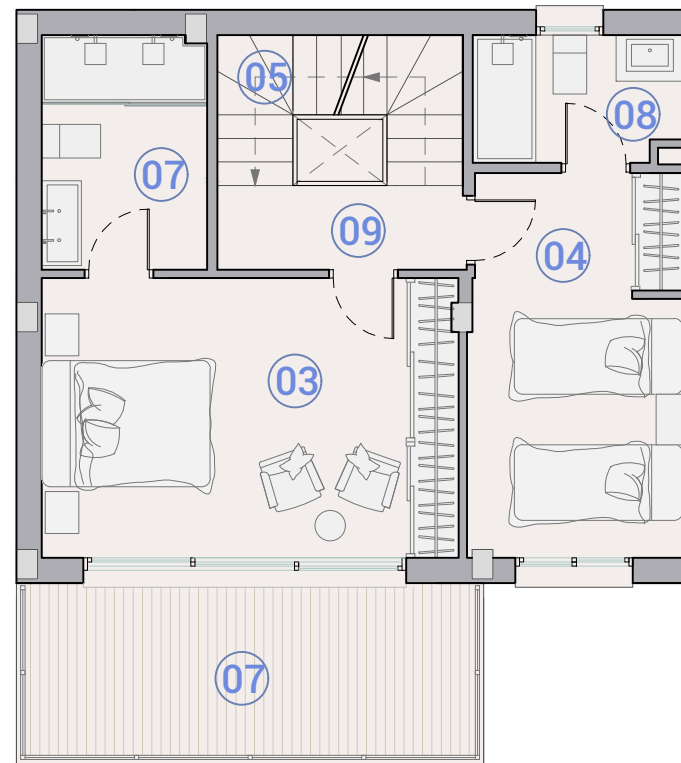
1/2



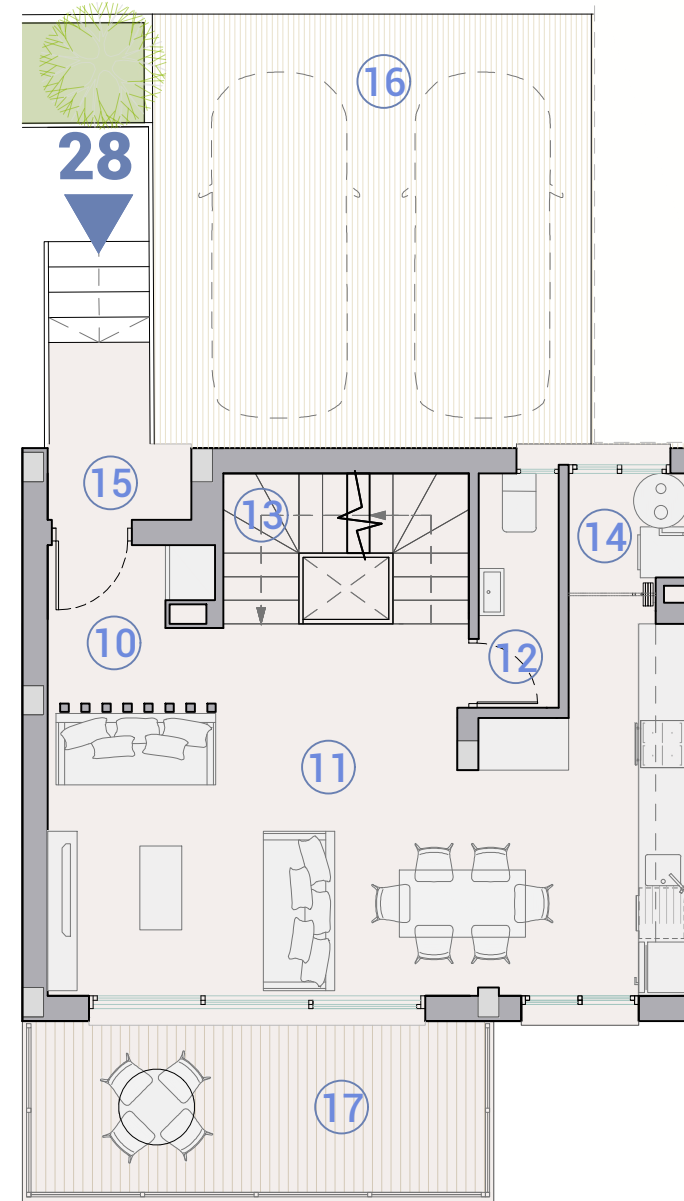
Sección / Section



Solarium

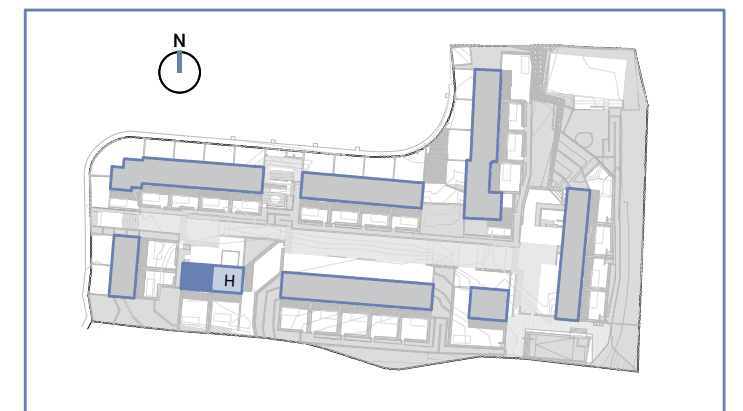


Planta / Floor Superior

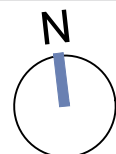


Planta / Floor Intermedia

| | sup. útil floor area (m ²) | sup. const. built area (m ²) |
|--|--|--|
| SOLARIUM | | |
| 1. Terraza / Terrace | | 49,46 |
| 2. Instalaciones / Facilities | | 18,28 |
| Exterior / Outdoor | | 67,74 |
| PLANTA / FLOOR SUP. | | |
| 3. Dormitorio 1 / Bedroom 1 | 16,52 | |
| 4. Dormitorio 2 / Bedroom 2 | 11,55 | |
| 5. Escalera / Stairs | 4,42 | |
| 6. Baño 1 / Bathroom 1 | 5,47 | |
| 7. Baño 2 / Bathroom 2 | 3,70 | |
| 8. Distribuidor 2 / Hall 2 | 2,96 | |
| Interior / Indoor | 44,62 | |
| 9. Terraza / Terrace | | 11,95 |
| Exterior / Outdoor | | 11,95 |
| PLANTA / FLOOR INT. | | |
| 10. Recibidor / Hall | 1,77 | |
| 11. Salón comedor cocina / Living dining kitchen | 32,83 | |
| 12. Aseo / Toilet | 2,65 | |
| 13. Escalera / Stairs | 4,42 | |
| 14. Galería / Gallery | 1,78 | |
| Interior / Indoor | 43,45 | |
| 15. Acceso / Access | | 2,23 |
| 16. Aparcamiento / Parking | | 26,70 |
| 17. Terraza / Terrace | | 12,06 |
| Exterior / Outdoor | | 40,99 |
| PLANTA / FLOOR INF. | | |
| 18. Estancia residencial D3 / Residential room D3 | 14,95 | |
| 19. Baño 3 / Bathroom 3 | 4,49 | |
| 20. Estancia residencial D4 / Residential room D4 | 8,25 | |
| 21. Sala TV / TV room | 13,32 | |
| 22. Instalaciones / Facilities | 2,60 | |
| 23. Trastero / Storage room | 0,81 | |
| Interior / Indoor | 44,42 | |
| 24. Jardín solado / Paved garden | | 20,78 |
| 25. Jardín con césped / Grass garden | | 45,12 |
| 26. Jardín con grava / Gravel garden | | 24,74 |
| Exterior / Outdoor | | 90,64 |
| SUP. ÚTIL INT. VIV. / FLOOR INT. AREA APARTMENT | 132,49 | |
| SUP. CONST. INT. VIV. / BUILT INT. AREA APARTMENT | | 167,58 |
| TOTAL CON EXTERIORES / TOTAL WITH OUTDOORS | | 378,90 |
| SUPERFICIE DE PARCELA / PLOT AREA | | 169,17 |



Escala gráfica



Plano sujeto a posibles modificaciones por razones o exigencias de índole técnica, jurídica o administrativa. Las superficies son aproximadas. Cocina y amueblamiento orientativo, sin valor contractual.
Plans subject to possible modifications for technical, legal or administrative reasons. Measurements shown are approximate. Kitchen and furnishings are for display purposes only, with no contractual value.

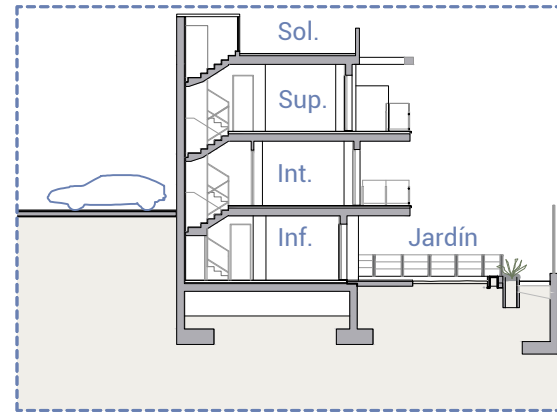
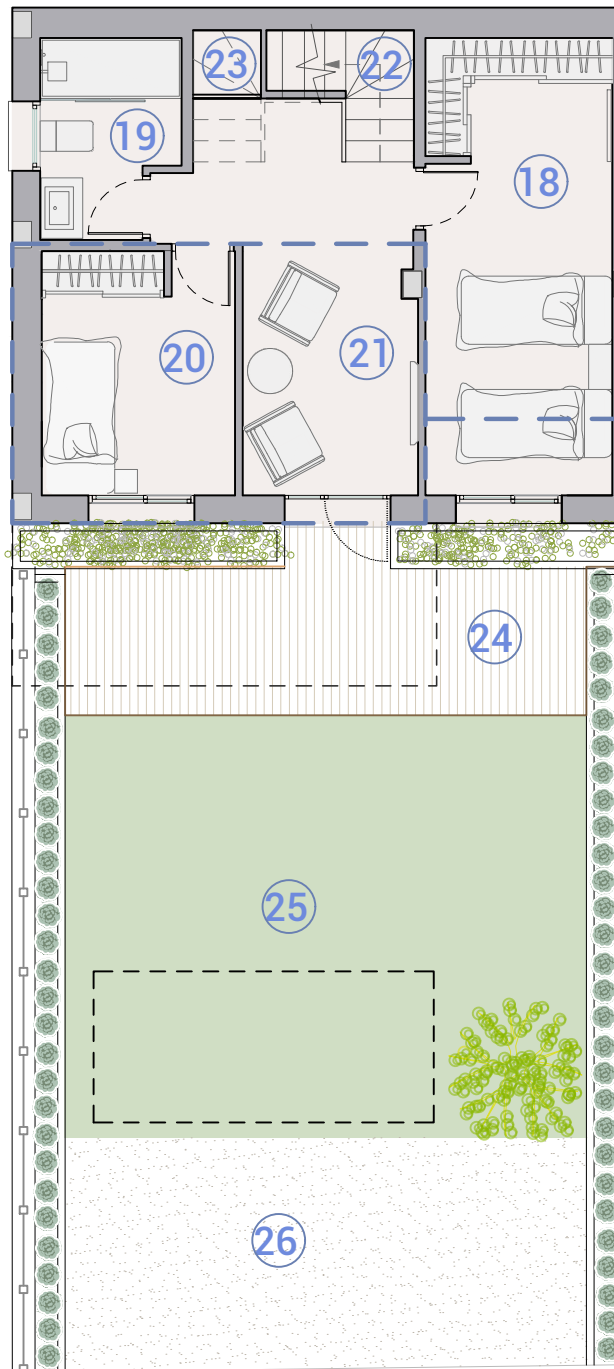
Fecha Edición: Febrero 2024

VIVIENDA HOUSE

28

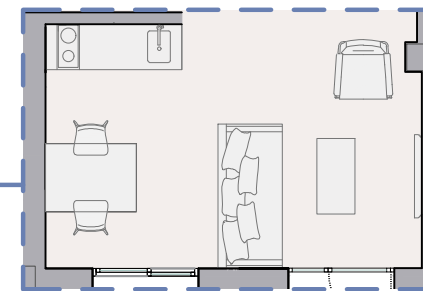
Planta Floor | Inferior

2/2

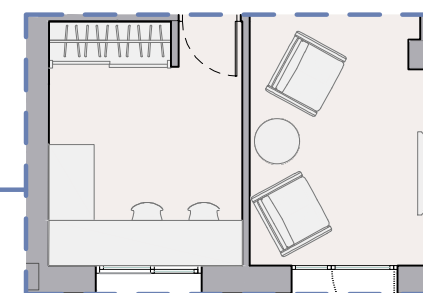


Sección / Section

Opciones distribución
Distribution options



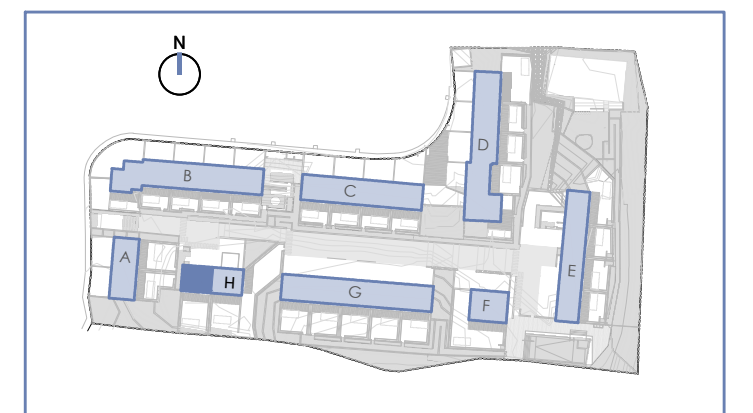
Opción 2: Living + kitchenette
Planta / Floor Inferior



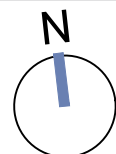
Opción 3: Home office + TV room
Planta / Inferior

Opción 1: Bedroom + TV room
Planta / Floor Inferior

| | sup útil (m ²) floor area (m ²) | sup const. (m ²) built area (m ²) |
|--|--|--|
| SOLARIUM | 1. Terraza / Terrace | 49,46 |
| | 2. Instalaciones / Facilities | 18,28 |
| | Exterior / Outdoor | 67,74 |
| PLANTA / FLOOR SUP. | 3. Dormitorio 1 / Bedroom 1 | 16,52 |
| | 4. Dormitorio 2 / Bedroom 2 | 11,55 |
| | 5. Escalera / Stairs | 4,42 |
| | 6. Baño 1 / Bathroom 1 | 5,47 |
| | 7. Baño 2 / Bathroom 2 | 3,70 |
| | 8. Distribuidor 2 / Hall 2 | 2,96 |
| | Interior / Indoor | 44,62 |
| | 9. Terraza / Terrace | 11,95 |
| Exterior / Outdoor | 11,95 | |
| PLANTA / FLOOR INT. | 10. Recibidor / Hall | 1,77 |
| | 11. Salón comedor cocina / Living dining kitchen | 32,83 |
| | 12. Aseo / Toilet | 2,65 |
| | 13. Escalera / Stairs | 4,42 |
| | 14. Galería / Gallery | 1,78 |
| | Interior / Indoor | 43,45 |
| | 15. Acceso / Access | 2,23 |
| 16. Aparcamiento / Parking | 26,70 | |
| 17. Terraza / Terrace | 12,06 | |
| Exterior / Outdoor | 40,99 | |
| PLANTA / FLOOR INF. | 18. Estancia residencial D3 / Residential room D3 | 14,95 |
| | 19. Baño 3 / Bathroom 3 | 4,49 |
| | 20. Estancia residencial D4 / Residential room D4 | 8,25 |
| | 21. Sala TV / TV room | 13,32 |
| | 22. Instalaciones / Facilities | 2,60 |
| | 23. Trastero / Storage room | 0,81 |
| Interior / Indoor | 44,42 | |
| 24. Jardín solado / Paved garden | 20,78 | |
| 25. Jardín con césped / Grass garden | 45,12 | |
| 26. Jardín con grava / Gravel garden | 24,74 | |
| Exterior / Outdoor | 90,64 | |
| SUP. ÚTIL INT. VIV. / FLOOR INT. AREA APARTMENT | | 132,49 |
| SUP. CONST. INT. VIV. / BUILT INT. AREA APARTMENT | | 167,58 |
| TOTAL CON EXTERIORES / TOTAL WITH OUTDOORS | | 378,90 |
| SUPERFICIE DE PARCELA / PLOT AREA | | 169,17 |



Escala gráfica



Fecha Edición: Febrero 2024

Plano sujeto a posibles modificaciones por razones o exigencias de índole técnica, jurídica o administrativa. Las superficies son aproximadas. Cocina y amueblamiento orientativo, sin valor contractual.
Plans subject to possible modifications for technical, legal or administrative reasons. Measurements shown are approximate. Kitchen and furnishings are for display purposes only, with no contractual value.