



FLOOR PLANS MASTER

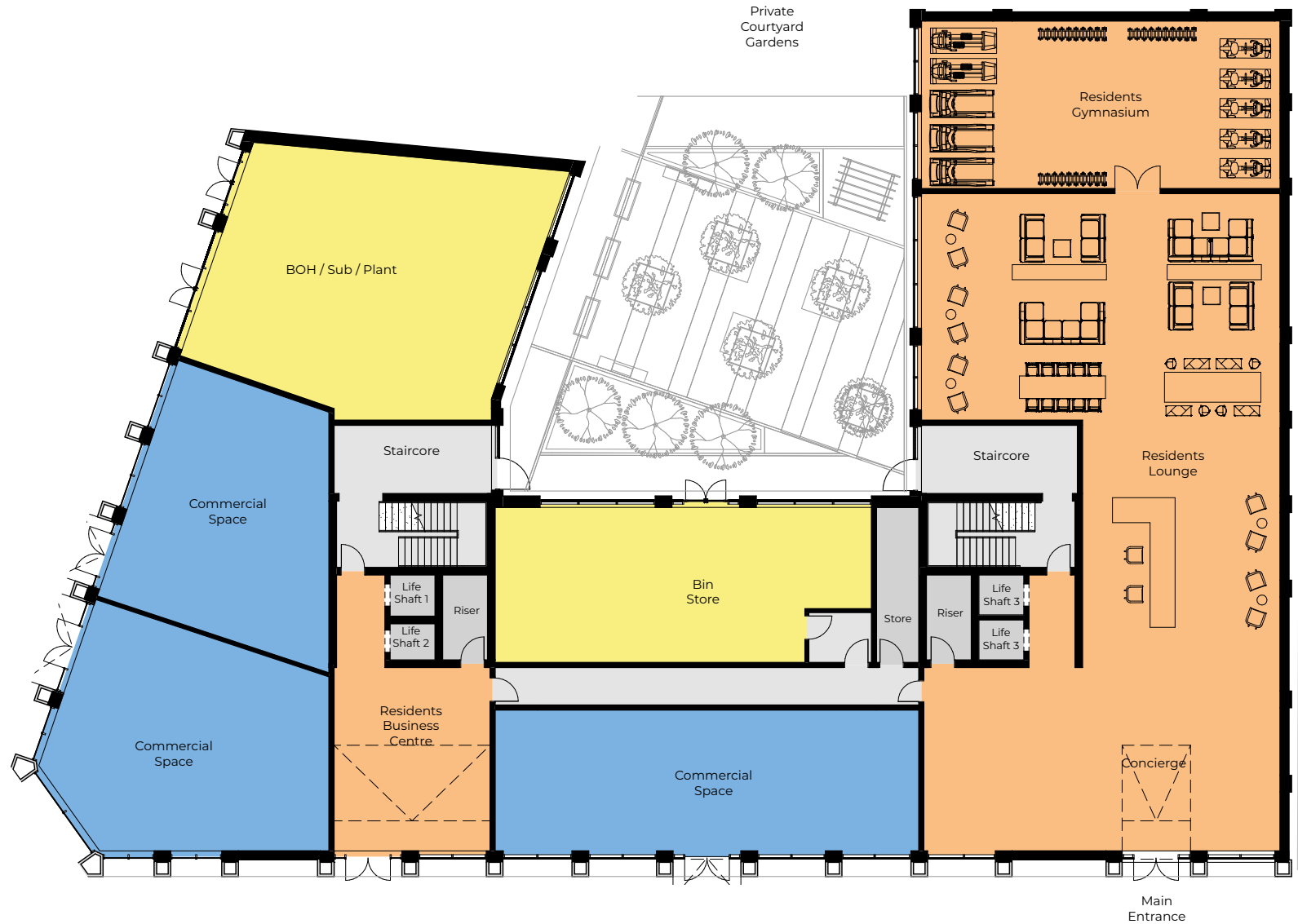
GROUND FLOOR



Please note: Elevation is indicative to show floor position relative to building.

**Where possible measurements have been taken from the central point of the room.

**The listed dimensions are indicative and are for reference only. These dimensions do not relate to the overall apartment areas. i.e angled floor plans and internal rooms.



FLOORS 1



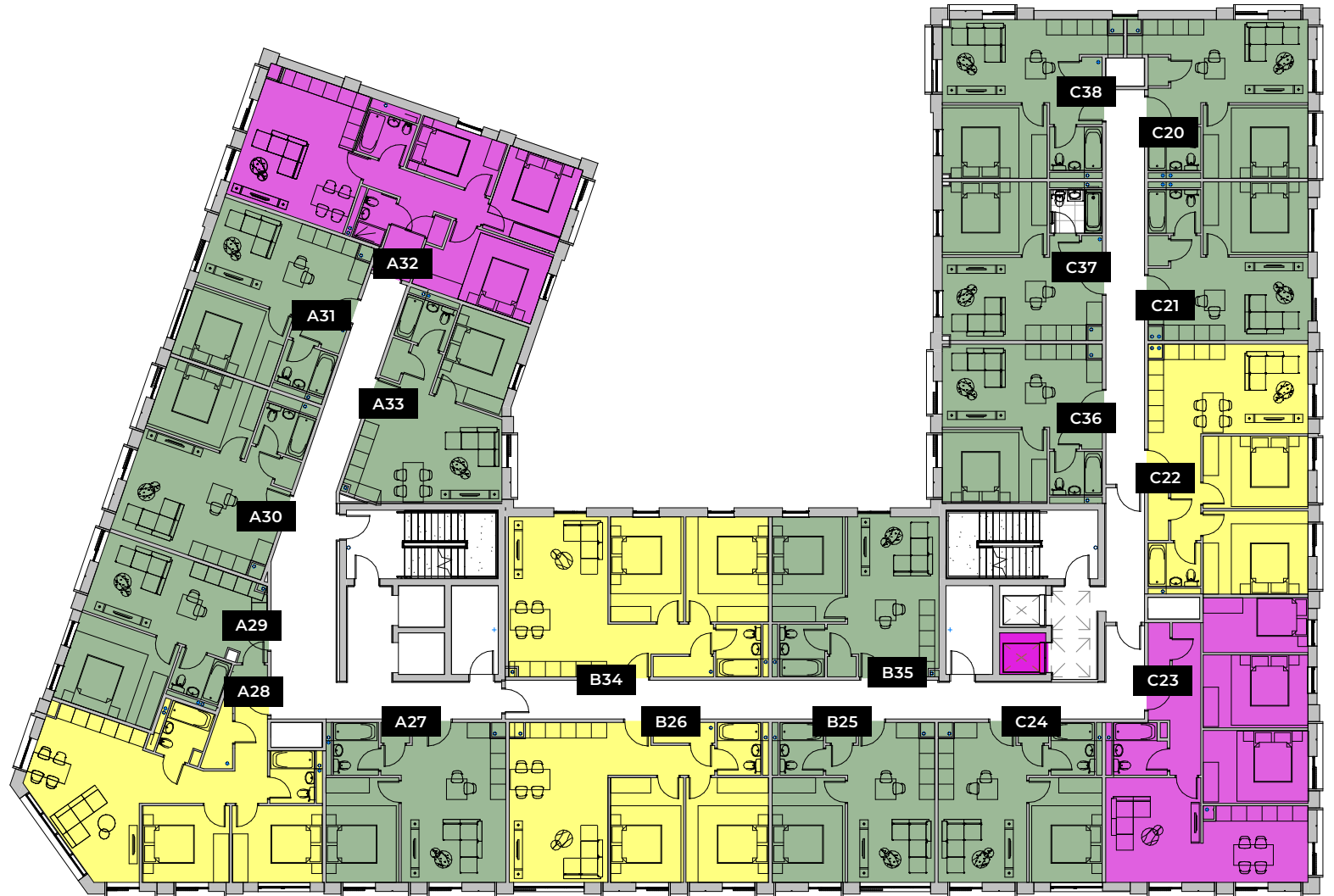
Please note: Elevation is indicative to show floor position relative to building.

**Where possible measurements have been taken from the central point of the room.

**The listed dimensions are indicative and are for reference only. These dimensions do not relate to the overall apartment areas, i.e. angled floor plans and internal rooms.



FLOORS 2



Please note: Elevation is indicative to show floor position relative to building.

**Where possible measurements have been taken from the central point of the room.

**The listed dimensions are indicative and are for reference only. These dimensions do not relate to the overall apartment areas, i.e. angled floor plans and internal rooms.

FLOORS 3



Please note: Elevation is indicative to show floor position relative to building.

**Where possible measurements have been taken from the central point of the room.

**The listed dimensions are indicative and are for reference only. These dimensions do not relate to the overall apartment areas, i.e. angled floor plans and internal rooms.



FLOORS 4



Please note: Elevation is indicative to show floor position relative to building.

**Where possible measurements have been taken from the central point of the room.

**The listed dimensions are indicative and are for reference only. These dimensions do not relate to the overall apartment areas, i.e. angled floor plans and internal rooms.



FLOORS 5



Please note: Elevation is indicative to show floor position relative to building.

**Where possible measurements have been taken from the central point of the room.

**The listed dimensions are indicative and are for reference only. These dimensions do not relate to the overall apartment areas, i.e. angled floor plans and internal rooms.

FLOORS 6



Please note: Elevation is indicative to show floor position relative to building.

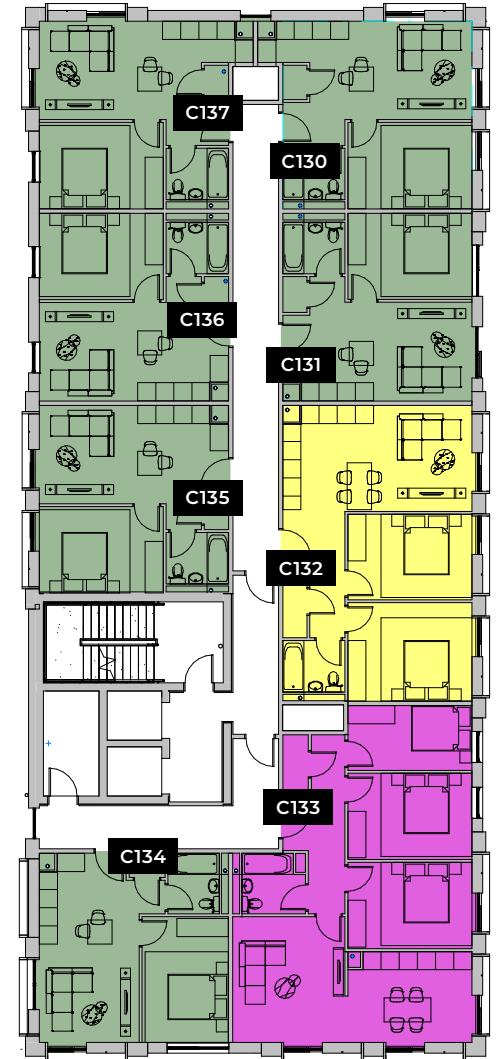
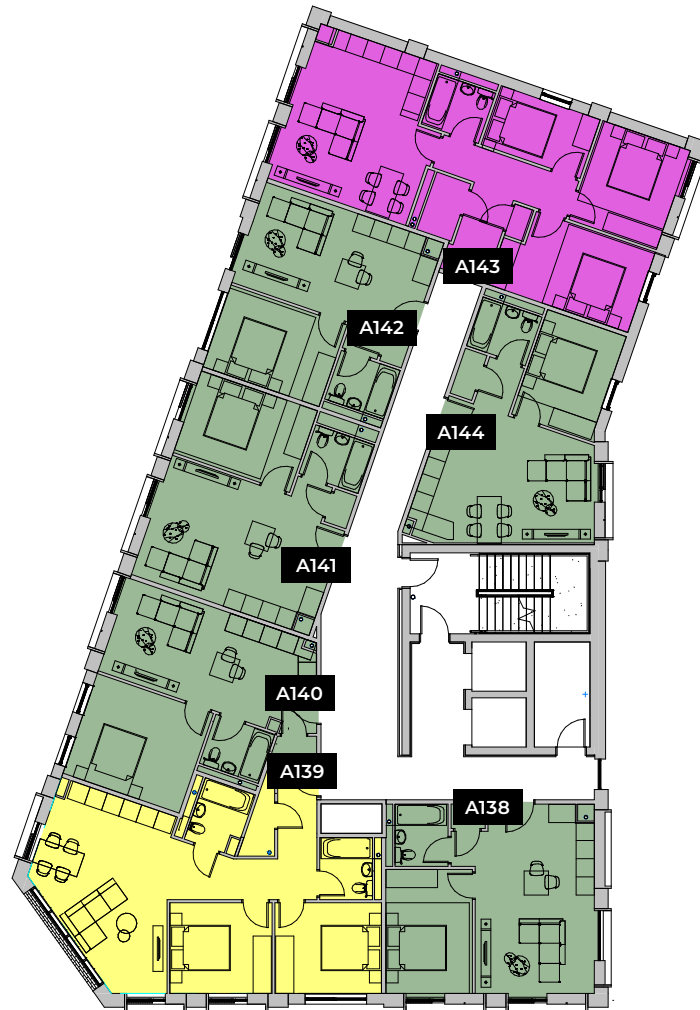
**Where possible measurements have been taken from the central point of the room.

**The listed dimensions are indicative and are for reference only. These dimensions do not relate to the overall apartment areas, i.e. angled floor plans and internal rooms.

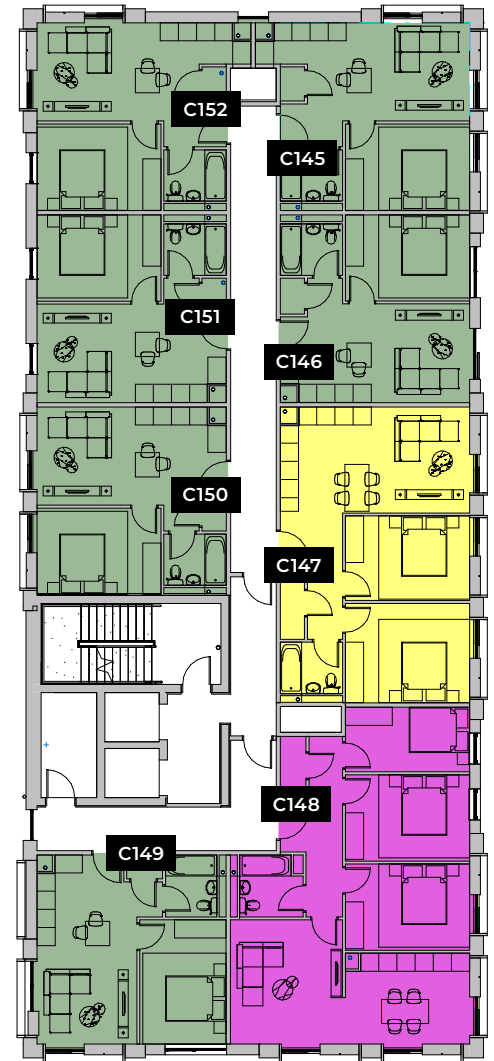
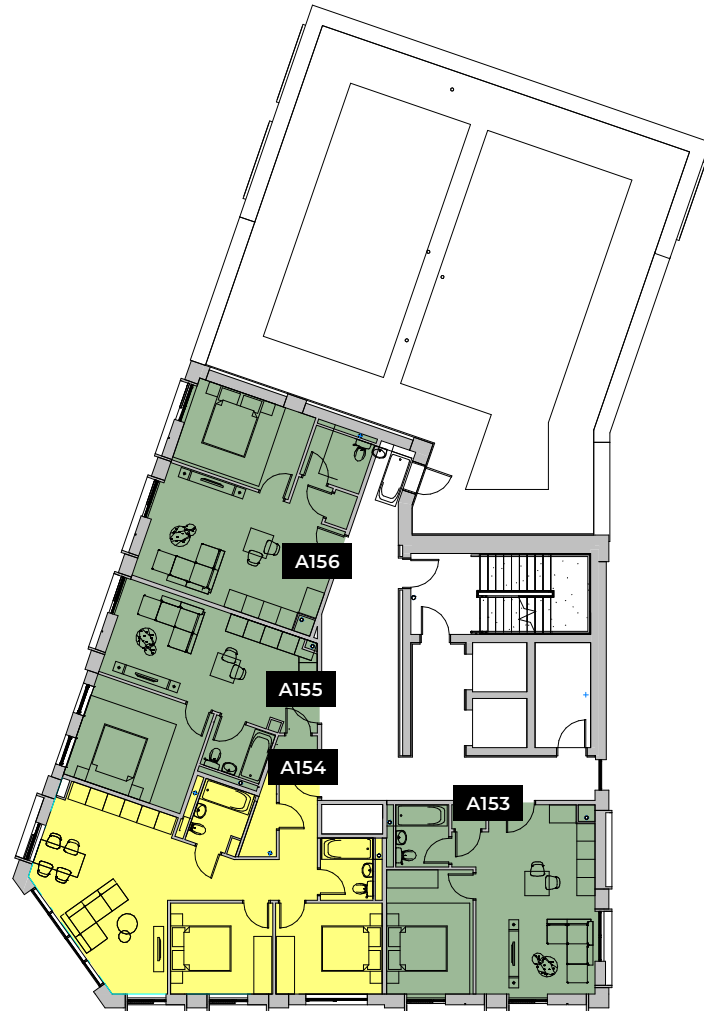
FLOORS 7



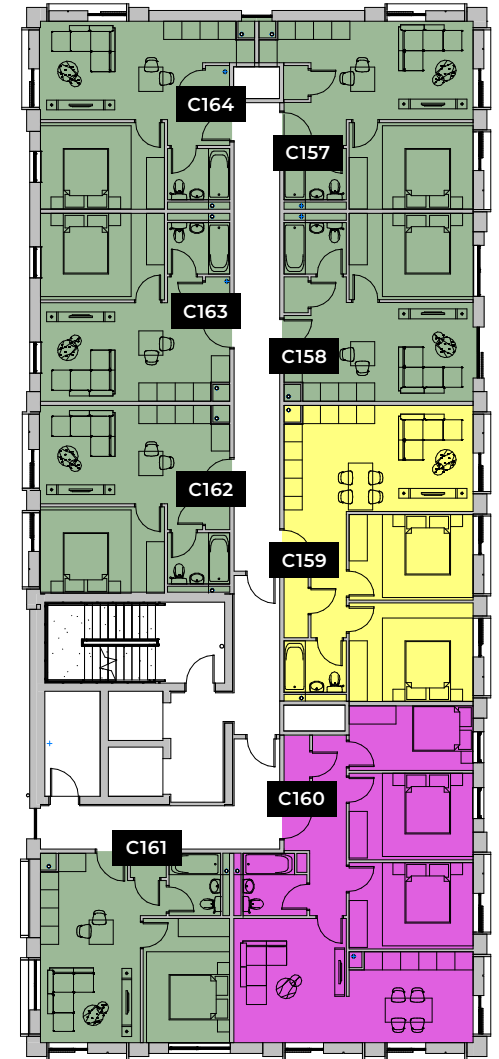
FLOORS 8



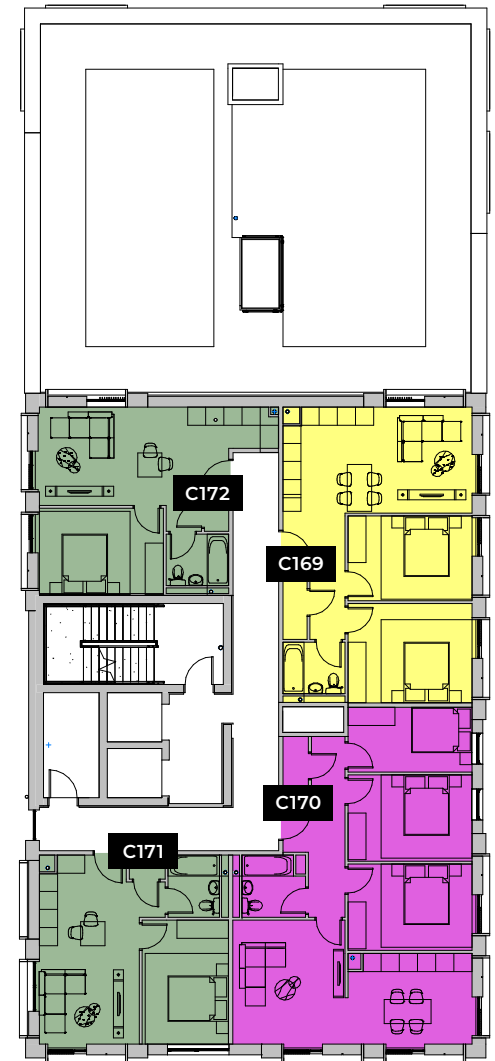
FLOORS 9



FLOORS 10



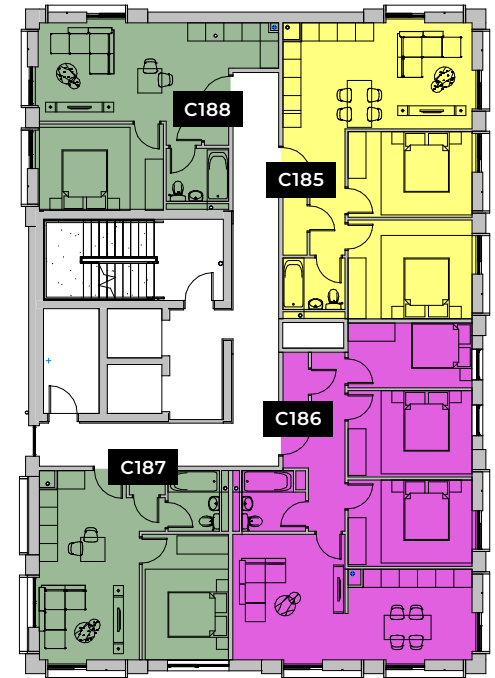
FLOORS 11



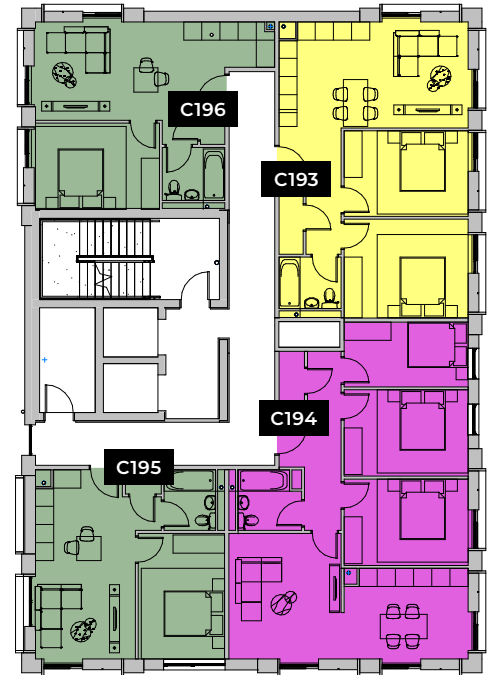
FLOORS 12



FLOORS 13



FLOORS 14



FLOORS 15



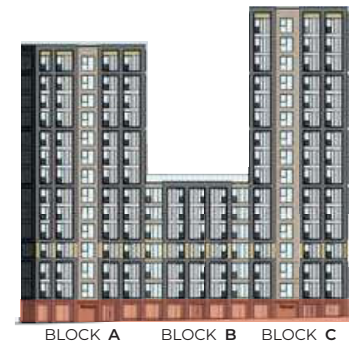
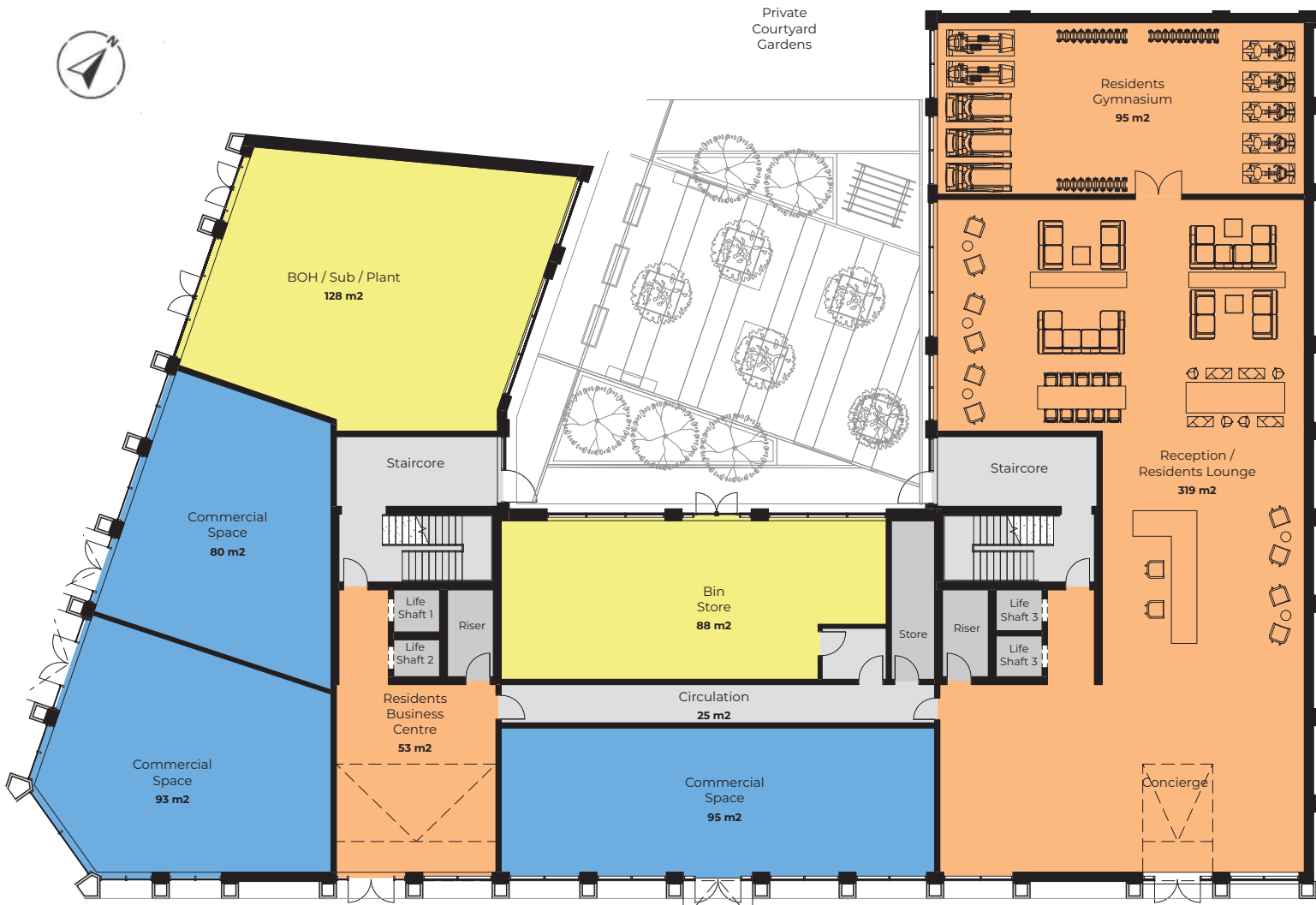


FLOOR PLANS MASTER

"Alliance Investments Ltd. gives notice that the information provided herein is produced for the general promotion of the properties and does not form part of any contract or offer. This information has been prepared in good faith and is believed to be correct as at the date of publication although the accuracy cannot be guaranteed. All images are for illustration purposes only and, in respect of proposed developments, are intended to provide a general indication of the proposed development only. The developer reserves the right to alter any part of the development, specification or floor layouts at any time. Figures provided for living costs (for example, service charges) are estimates only and may be subject to change. Prospective purchasers should not rely on this information but must get their solicitor to check the plans, specification and property information provided during the sales process. Part or full reproduction of the information contained herein is strictly forbidden without consent from Alliance Investments Ltd."



FLOOR PLANS BLOCK A



GROUND FLOOR

Please note: Elevation is indicative to show floor position relative to building.

**Where possible measurements have been taken from the central point of the room.

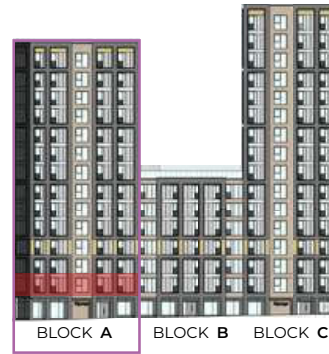
**The listed dimensions are indicative and are for reference only. These dimensions do not relate to the overall apartment areas, i.e. angled floor plans and internal rooms.

Floor 1

Apartments A08 - A14



1-BED	2-BED	3-BED
-------	-------	-------



Please note: Elevation is indicative to show floor position relative to building.

**Where possible measurements have been taken from the central point of the room.

**The listed dimensions are indicative and are for reference only. These dimensions do not relate to the overall apartment areas. i.e angled floor plans and internal rooms.

One Bed Apartment - 44 sqm - 473 sqft

A08

Rooms	m
Kitchen	3.0 x 1.4
Living Room	4.1 x 3.1
Bathroom	2.0 x 2.0
Bedroom 1	4.1 x 2.7

Two Bed Apartment - 67 sqm - 721 sqft

A09

Rooms	m
Kitchen	4.3 x 2.0
Living Room	3.2 x 2.3
Bathroom	2.0 x 2.0
Bedroom 1	3.6 x 3.0
Bedroom 2	3.2 x 3.0

One Bed Apartment - 45 sqm - 484 sqft

A10

Rooms	m
Kitchen	3.1 x 2.0
Living Room	3.2 x 3.1
Bathroom	2.3 x 2.0
Bedroom 1	4.1 x 3.6

One Bed Apartment - 44 sqm - 473 sqft

A11

Rooms	m
Kitchen	3.0 x 1.4
Living Room	4.0 x 3.1
Bathroom	2.0 x 2.0
Bedroom 1	4.1 x 2.8

One Bed Apartment - 40 sqm - 430 sqft

A12

Rooms	m
Kitchen	3.0 x 1.4
Living Room	3.5 x 3.1
Bathroom	2.0 x 2.0
Bedroom 1	2.5 x 3.6

Three Bed Apartment - 74 sqm - 796 sqft

A13

Rooms	m
Kitchen	4.1 x 2.0
Living Room	3.9 x 3.0
Bathroom	2.0 x 2.0
Bedroom 1	4.9 x 2.8
Bedroom 2	3.5 x 3.0
Bedroom 3	3.4 x 2.0

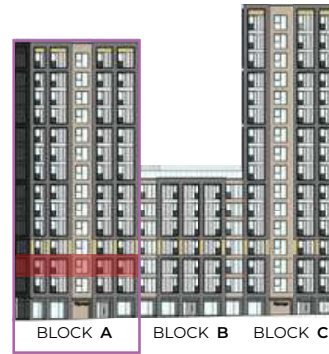
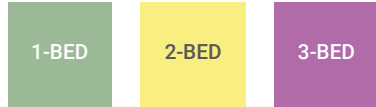
One Bed Apartment - 42 sqm - 452 sqft

A14

Rooms	m
Kitchen	3.0 x 1.4
Living Room	3.3 x 2.7
Bathroom	2.0 x 2.0
Bedroom 1	3.6 x 2.7

Floor 2

Apartments A27 - A33



Please note: Elevation is indicative to show floor position relative to building.

**Where possible measurements have been taken from the central point of the room.

**The listed dimensions are indicative and are for reference only. These dimensions do not relate to the overall apartment areas. i.e. angled floor plans and internal rooms.

One Bed Apartment - 44 sqm - 473 sqft

Rooms	m
Kitchen	3.0 x 1.4
Living Room	4.1 x 3.1
Bathroom	2.0 x 2.0
Bedroom 1	4.1 x 2.7

Two Bed Apartment - 67 sqm - 721 sqft

Rooms	m
Kitchen	4.3 x 2.0
Living Room	3.2 x 2.3
Bathroom	2.0 x 2.0
Bedroom 1	3.6 x 3.0
Bedroom 2	3.2 x 3.0

One Bed Apartment - 45 sqm - 484 sqft

Rooms	m
Kitchen	3.1 x 2.0
Living Room	3.2 x 3.1
Bathroom	2.3 x 2.0
Bedroom 1	4.1 x 3.6

One Bed Apartment - 44 sqm - 473 sqft

Rooms	m
Kitchen	3.0 x 1.4
Living Room	4.0 x 3.1
Bathroom	2.0 x 2.0
Bedroom 1	4.1 x 2.8

One Bed Apartment - 40 sqm - 430 sqft

Rooms	m
Kitchen	3.0 x 1.4
Living Room	3.5 x 3.1
Bathroom	2.0 x 2.0
Bedroom 1	2.5 x 3.6

Three Bed Apartment - 74 sqm - 796 sqft

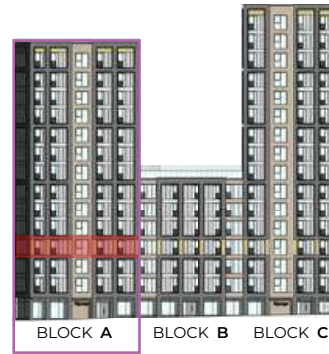
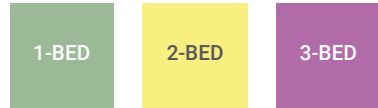
Rooms	m
Kitchen	4.1 x 2.0
Living Room	3.9 x 3.0
Bathroom	2.0 x 2.0
Bedroom 1	4.9 x 2.8
Bedroom 2	3.5 x 3.0
Bedroom 3	3.4 x 2.0

One Bed Apartment - 42 sqm - 452 sqft

Rooms	m
Kitchen	3.0 x 1.4
Living Room	3.3 x 2.7
Bathroom	2.0 x 2.0
Bedroom 1	3.6 x 2.7

Floor 3

Apartments A46 - A52



Please note: Elevation is indicative to show floor position relative to building.

**Where possible measurements have been taken from the central point of the room.

**The listed dimensions are indicative and are for reference only. These dimensions do not relate to the overall apartment areas. i.e. angled floor plans and internal rooms.

One Bed Apartment - 44 sqm
- 473 sqft

A46

Rooms	m
Kitchen	3.0 x 1.4
Living Room	4.1 x 3.1
Bathroom	2.0 x 2.0
Bedroom 1	4.1 x 2.7

Two Bed Apartment - 67 sqm
- 721 sqft

A47

Rooms	m
Kitchen	4.3 x 2.0
Living Room	3.2 x 2.3
Bathroom	2.0 x 2.0
Bedroom 1	3.6 x 3.0
Bedroom 2	3.2 x 3.0

One Bed Apartment - 45 sqm
- 484 sqft

A48

Rooms	m
Kitchen	3.1 x 2.0
Living Room	3.2 x 3.1
Bathroom	2.3 x 2.0
Bedroom 1	4.1 x 3.6

One Bed Apartment - 44 sqm
- 473 sqft

A49

Rooms	m
Kitchen	3.0 x 1.4
Living Room	4.0 x 3.1
Bathroom	2.0 x 2.0
Bedroom 1	4.1 x 2.8

One Bed Apartment - 40 sqm
- 430 sqft

A50

Rooms	m
Kitchen	3.0 x 1.4
Living Room	3.5 x 3.1
Bathroom	2.0 x 2.0
Bedroom 1	2.5 x 3.6

Three Bed Apartment - 74 sqm
- 796 sqft

A51

Rooms	m
Kitchen	4.1 x 2.0
Living Room	3.9 x 3.0
Bathroom	2.0 x 2.0
Bedroom 1	4.9 x 2.8
Bedroom 2	3.5 x 3.0
Bedroom 3	3.4 x 2.0

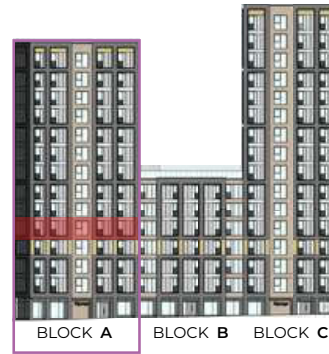
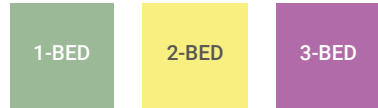
One Bed Apartment - 42 sqm
- 452 sqft

A52

Rooms	m
Kitchen	3.0 x 1.4
Living Room	3.3 x 2.7
Bathroom	2.0 x 2.0
Bedroom 1	3.6 x 2.7

Floor 4

Apartments A65 - A71



Please note: Elevation is indicative to show floor position relative to building.

**Where possible measurements have been taken from the central point of the room.

**The listed dimensions are indicative and are for reference only. These dimensions do not relate to the overall apartment areas. i.e. angled floor plans and internal rooms.

One Bed Apartment - 44 sqm
- 473 sqft

A65

Rooms	m
Kitchen	3.0 x 1.4
Living Room	4.1 x 3.1
Bathroom	2.0 x 2.0
Bedroom 1	4.1 x 2.7

Two Bed Apartment - 67 sqm
- 721 sqft

A66

Rooms	m
Kitchen	4.3 x 2.0
Living Room	3.2 x 2.3
Bathroom	2.0 x 2.0
Bedroom 1	3.6 x 3.0
Bedroom 2	3.2 x 3.0

One Bed Apartment - 45 sqm
- 484 sqft

A67

Rooms	m
Kitchen	3.1 x 2.0
Living Room	3.2 x 3.1
Bathroom	2.3 x 2.0
Bedroom 1	4.1 x 3.6

One Bed Apartment - 44 sqm
- 473 sqft

A68

Rooms	m
Kitchen	3.0 x 1.4
Living Room	4.0 x 3.1
Bathroom	2.0 x 2.0
Bedroom 1	4.1 x 2.8

One Bed Apartment - 40 sqm
- 430 sqft

A69

Rooms	m
Kitchen	3.0 x 1.4
Living Room	3.5 x 3.1
Bathroom	2.0 x 2.0
Bedroom 1	2.5 x 3.6

Three Bed Apartment - 74 sqm
- 796 sqft

A70

Rooms	m
Kitchen	4.1 x 2.0
Living Room	3.9 x 3.0
Bathroom	2.0 x 2.0
Bedroom 1	4.9 x 2.8
Bedroom 2	3.5 x 3.0
Bedroom 3	3.4 x 2.0

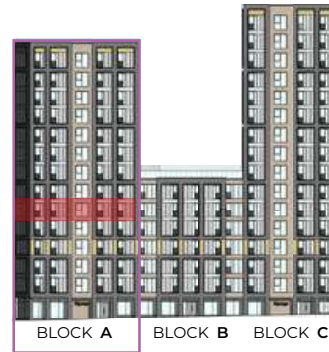
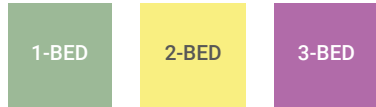
One Bed Apartment - 42 sqm
- 452 sqft

A71

Rooms	m
Kitchen	3.0 x 1.4
Living Room	3.3 x 2.7
Bathroom	2.0 x 2.0
Bedroom 1	3.6 x 2.7

Floor 5

Apartments A84 - A90



Please note: Elevation is indicative to show floor position relative to building.

**Where possible measurements have been taken from the central point of the room.

**The listed dimensions are indicative and are for reference only. These dimensions do not relate to the overall apartment areas. i.e angled floor plans and internal rooms.

One Bed Apartment - 44 sqm
- 473 sqft

A84

Rooms	m
Kitchen	3.0 x 1.4
Living Room	4.1 x 3.1
Bathroom	2.0 x 2.0
Bedroom 1	4.1 x 2.7

Two Bed Apartment - 67 sqm
- 721 sqft

A85

Rooms	m
Kitchen	4.3 x 2.0
Living Room	3.2 x 2.3
Bathroom	2.0 x 2.0
Bedroom 1	3.6 x 3.0
Bedroom 2	3.2 x 3.0

One Bed Apartment - 45 sqm
- 484 sqft

A86

Rooms	m
Kitchen	3.1 x 2.0
Living Room	3.2 x 3.1
Bathroom	2.3 x 2.0
Bedroom 1	4.1 x 3.6

One Bed Apartment - 44 sqm
- 473 sqft

A87

Rooms	m
Kitchen	3.0 x 1.4
Living Room	4.0 x 3.1
Bathroom	2.0 x 2.0
Bedroom 1	4.1 x 2.8

One Bed Apartment - 40 sqm
- 430 sqft

A88

Rooms	m
Kitchen	3.0 x 1.4
Living Room	3.5 x 3.1
Bathroom	2.0 x 2.0
Bedroom 1	2.5 x 3.6

Three Bed Apartment - 74 sqm
- 796 sqft

A89

Rooms	m
Kitchen	4.1 x 2.0
Living Room	3.9 x 3.0
Bathroom	2.0 x 2.0
Bedroom 1	4.9 x 2.8
Bedroom 2	3.5 x 3.0
Bedroom 3	3.4 x 2.0

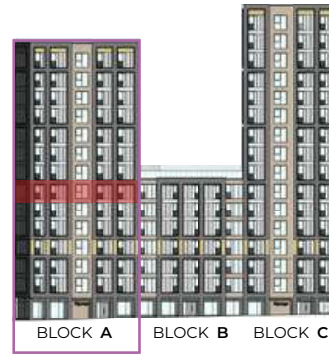
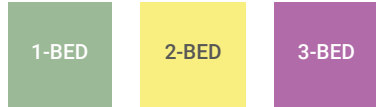
One Bed Apartment - 42 sqm
- 452 sqft

A90

Rooms	m
Kitchen	3.0 x 1.4
Living Room	3.3 x 2.7
Bathroom	2.0 x 2.0
Bedroom 1	3.6 x 2.7

Floor 6

Apartments A103 - A109



Please note: Elevation is indicative to show floor position relative to building.

**Where possible measurements have been taken from the central point of the room.

**The listed dimensions are indicative and are for reference only. These dimensions do not relate to the overall apartment areas. i.e angled floor plans and internal rooms.

One Bed Apartment - 44 sqm - 473 sqft

A103

Rooms	m
Kitchen	3.0 x 1.4
Living Room	4.1 x 3.1
Bathroom	2.0 x 2.0
Bedroom 1	4.1 x 2.7

Two Bed Apartment - 67 sqm - 721 sqft

A104

Rooms	m
Kitchen	4.3 x 2.0
Living Room	3.2 x 2.3
Bathroom	2.0 x 2.0
Bedroom 1	3.6 x 3.0
Bedroom 2	3.2 x 3.0

One Bed Apartment - 45 sqm - 484 sqft

A105

Rooms	m
Kitchen	3.1 x 2.0
Living Room	3.2 x 3.1
Bathroom	2.3 x 2.0
Bedroom 1	4.1 x 3.6

One Bed Apartment - 44 sqm - 473 sqft

A106

Rooms	m
Kitchen	3.0 x 1.4
Living Room	4.0 x 3.1
Bathroom	2.0 x 2.0
Bedroom 1	4.1 x 2.8

One Bed Apartment - 40 sqm - 430 sqft

A107

Rooms	m
Kitchen	3.0 x 1.4
Living Room	3.5 x 3.1
Bathroom	2.0 x 2.0
Bedroom 1	2.5 x 3.6

Three Bed Apartment - 74 sqm - 796 sqft

A108

Rooms	m
Kitchen	4.1 x 2.0
Living Room	3.9 x 3.0
Bathroom	2.0 x 2.0
Bedroom 1	4.9 x 2.8
Bedroom 2	3.5 x 3.0
Bedroom 3	3.4 x 2.0

One Bed Apartment - 42 sqm - 452 sqft

A109

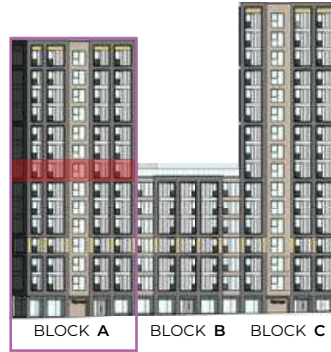
Rooms	m
Kitchen	3.0 x 1.4
Living Room	3.3 x 2.7
Bathroom	2.0 x 2.0
Bedroom 1	3.6 x 2.7

Floor 7

Apartments A123 - A129



1-BED	2-BED	3-BED
-------	-------	-------



Please note: Elevation is indicative to show floor position relative to building.

**Where possible measurements have been taken from the central point of the room.

**The listed dimensions are indicative and are for reference only. These dimensions do not relate to the overall apartment areas. i.e angled floor plans and internal rooms.

One Bed Apartment - 43 sqm
- 462 sqft

Rooms	m
Kitchen	3.0 x 1.4
Living Room	4.1 x 3.1
Bathroom	2.0 x 2.0
Bedroom 1	4.1 x 2.7

Two Bed Apartment - 67 sqm
- 721 sqft

Rooms	m
Kitchen	4.3 x 2.0
Living Room	3.2 x 2.3
Bathroom	2.0 x 2.0
Bedroom 1	3.6 x 3.0
Bedroom 2	3.2 x 3.0

One Bed Apartment - 45 sqm
- 484 sqft

Rooms	m
Kitchen	3.1 x 2.0
Living Room	3.2 x 3.1
Bathroom	2.3 x 2.0
Bedroom 1	4.1 x 3.6

One Bed Apartment - 44 sqm
- 473 sqft

Rooms	m
Kitchen	3.0 x 1.4
Living Room	4.0 x 3.1
Bathroom	2.0 x 2.0
Bedroom 1	4.1 x 2.8

One Bed Apartment - 40 sqm
- 430 sqft

Rooms	m
Kitchen	3.0 x 1.4
Living Room	3.5 x 3.1
Bathroom	2.0 x 2.0
Bedroom 1	2.5 x 3.6

Three Bed Apartment - 74 sqm
- 796 sqft

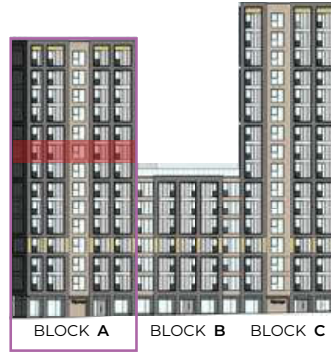
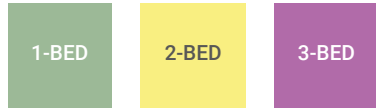
Rooms	m
Kitchen	4.1 x 2.0
Living Room	3.9 x 3.0
Bathroom	2.0 x 2.0
Bedroom 1	4.9 x 2.8
Bedroom 2	3.5 x 3.0
Bedroom 3	3.4 x 2.0

One Bed Apartment - 42 sqm
- 452 sqft

Rooms	m
Kitchen	3.0 x 1.4
Living Room	3.3 x 2.7
Bathroom	2.0 x 2.0
Bedroom 1	3.6 x 2.7

Floor 8

Apartments A138 - A144



Please note: Elevation is indicative to show floor position relative to building.

**Where possible measurements have been taken from the central point of the room.

**The listed dimensions are indicative and are for reference only. These dimensions do not relate to the overall apartment areas. i.e. angled floor plans and internal rooms.

One Bed Apartment - 43 sqm
- 462 sqft

A138

Rooms	m
Kitchen	3.0 x 1.4
Living Room	4.1 x 3.1
Bathroom	2.0 x 2.0
Bedroom 1	4.1 x 2.7

Two Bed Apartment - 67 sqm
- 721 sqft

A139

Rooms	m
Kitchen	4.3 x 2.0
Living Room	3.2 x 2.3
Bathroom	2.0 x 2.0
Bedroom 1	3.6 x 3.0
Bedroom 2	3.2 x 3.0

One Bed Apartment - 45 sqm
- 484 sqft

A140

Rooms	m
Kitchen	3.1 x 2.0
Living Room	3.2 x 3.1
Bathroom	2.3 x 2.0
Bedroom 1	4.1 x 3.6

One Bed Apartment - 44 sqm
- 473 sqft

A141

Rooms	m
Kitchen	3.0 x 1.4
Living Room	4.0 x 3.1
Bathroom	2.0 x 2.0
Bedroom 1	4.1 x 2.8

One Bed Apartment - 40 sqm
- 430 sqft

A142

Rooms	m
Kitchen	3.0 x 1.4
Living Room	3.5 x 3.1
Bathroom	2.0 x 2.0
Bedroom 1	2.5 x 3.6

Three Bed Apartment - 74 sqm
- 796 sqft

A143

Rooms	m
Kitchen	4.1 x 2.0
Living Room	3.9 x 3.0
Bathroom	2.0 x 2.0
Bedroom 1	4.9 x 2.8
Bedroom 2	3.5 x 3.0
Bedroom 3	3.4 x 2.0

One Bed Apartment - 42 sqm
- 452 sqft

A144

Rooms	m
Kitchen	3.0 x 1.4
Living Room	3.3 x 2.7
Bathroom	2.0 x 2.0
Bedroom 1	3.6 x 2.7

Floor 9

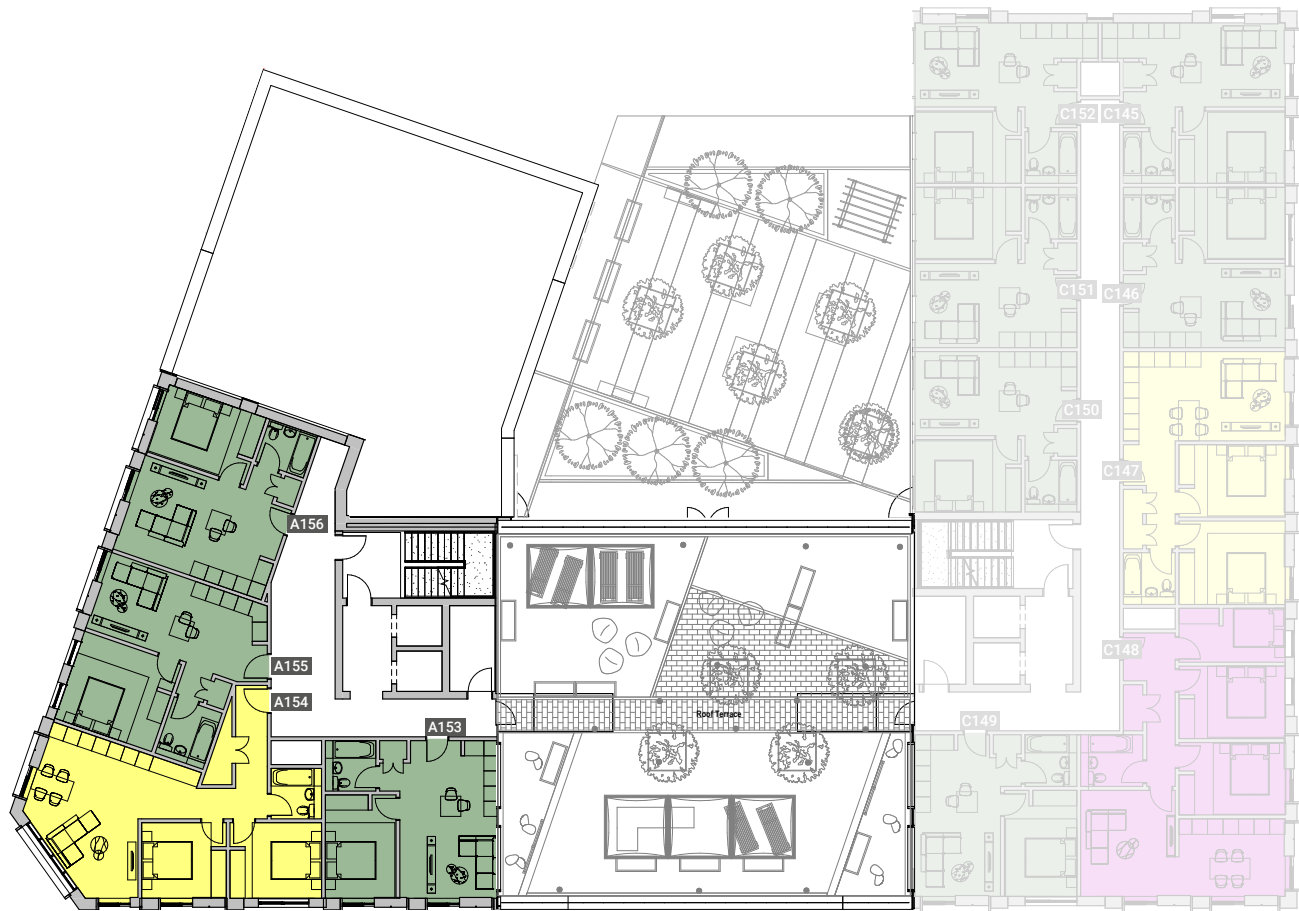
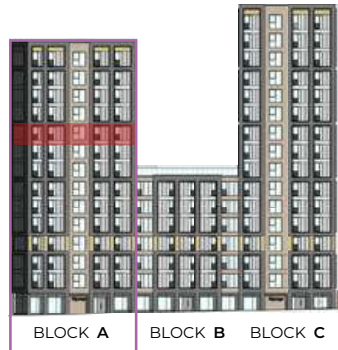
Apartments A153 - A156



1-BED

2-BED

3-BED



Please note: Elevation is indicative to show floor position relative to building.

**Where possible measurements have been taken from the central point of the room.

**The listed dimensions are indicative and are for reference only. These dimensions do not relate to the overall apartment areas. i.e angled floor plans and internal rooms.

One Bed Apartment - 43 sqm
- 462 sqft

A153

Rooms	m
Kitchen	3.0 x 1.4
Living Room	4.1 x 3.1
Bathroom	2.0 x 2.0
Bedroom 1	4.1 x 2.7

Two Bed Apartment - 67 sqm
- 721 sqft

A154

Rooms	m
Kitchen	4.3 x 2.0
Living Room	3.2 x 2.3
Bathroom	2.0 x 2.0
Bedroom 1	3.6 x 3.0
Bedroom 2	3.2 x 3.0

One Bed Apartment - 45 sqm
- 484 sqft

A155

Rooms	m
Kitchen	3.1 x 2.0
Living Room	3.2 x 3.1
Bathroom	2.3 x 2.0
Bedroom 1	4.1 x 3.6

One Bed Apartment - 43 sqm
- 462 sqft

A156

Rooms	m
Kitchen	3.0 x 1.4
Living Room	4.0 x 3.1
Bathroom	2.0 x 2.0
Bedroom 1	4.1 x 2.8

Floor 10

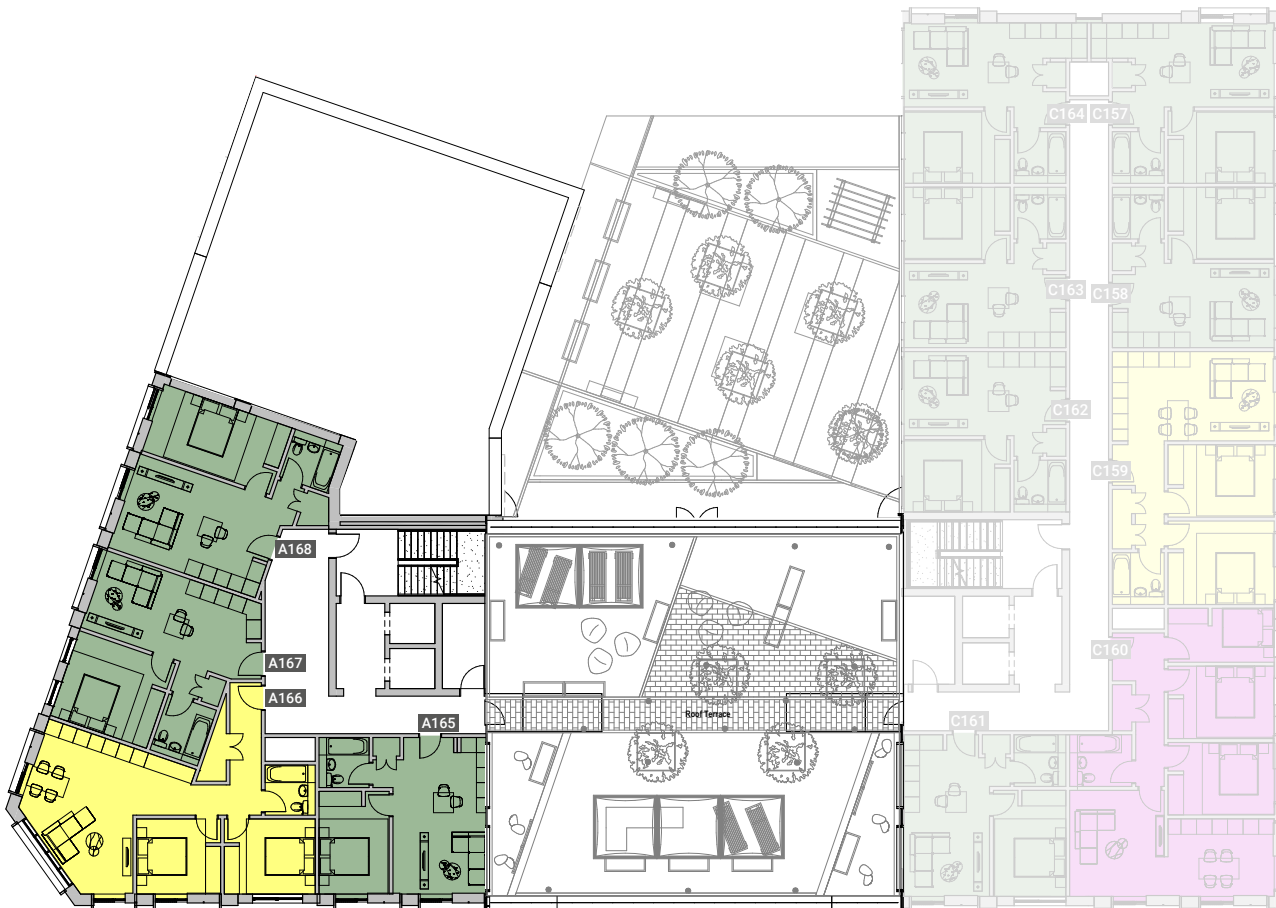
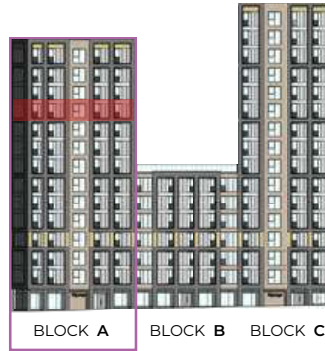
Apartments A165 - A168



1-BED

2-BED

3-BED



Please note: Elevation is indicative to show floor position relative to building.

**Where possible measurements have been taken from the central point of the room.

**The listed dimensions are indicative and are for reference only. These dimensions do not relate to the overall apartment areas. i.e angled floor plans and internal rooms.

One Bed Apartment - 43 sqm
- 462 sqft

A165

Rooms	m
Kitchen	3.0 x 1.4
Living Room	4.1 x 3.1
Bathroom	2.0 x 2.0
Bedroom 1	4.1 x 2.7

Two Bed Apartment - 67 sqm
- 721 sqft

A166

Rooms	m
Kitchen	4.3 x 2.0
Living Room	3.2 x 2.3
Bathroom	2.0 x 2.0
Bedroom 1	3.6 x 3.0
Bedroom 2	3.2 x 3.0

One Bed Apartment - 45 sqm
- 484 sqft

A167

Rooms	m
Kitchen	3.1 x 2.0
Living Room	3.2 x 3.1
Bathroom	2.3 x 2.0
Bedroom 1	4.1 x 3.6

One Bed Apartment - 48 sqm
- 517 sqft

A168

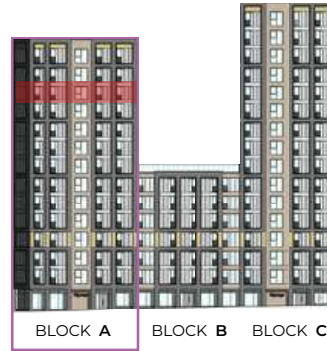
Rooms	m
Kitchen	3.0 x 1.4
Living Room	4.0 x 3.1
Bathroom	2.0 x 2.0
Bedroom 1	4.1 x 2.8

Floor 11

Apartments A173 - A176



1-BED	2-BED	3-BED
-------	-------	-------



Please note: Elevation is indicative to show floor position relative to building.

**Where possible measurements have been taken from the central point of the room.

**The listed dimensions are indicative and are for reference only. These dimensions do not relate to the overall apartment areas. i.e. angled floor plans and internal rooms.

One Bed Apartment - 43 sqm
- 462 sqft

A173

Rooms	m
Kitchen	3.0 x 1.4
Living Room	4.1 x 3.1
Bathroom	2.0 x 2.0
Bedroom 1	4.1 x 2.7

Two Bed Apartment - 67 sqm
- 721 sqft

A174

Rooms	m
Kitchen	4.3 x 2.0
Living Room	3.2 x 2.3
Bathroom	2.0 x 2.0
Bedroom 1	3.6 x 3.0
Bedroom 2	3.2 x 3.0

One Bed Apartment - 45 sqm
- 484 sqft

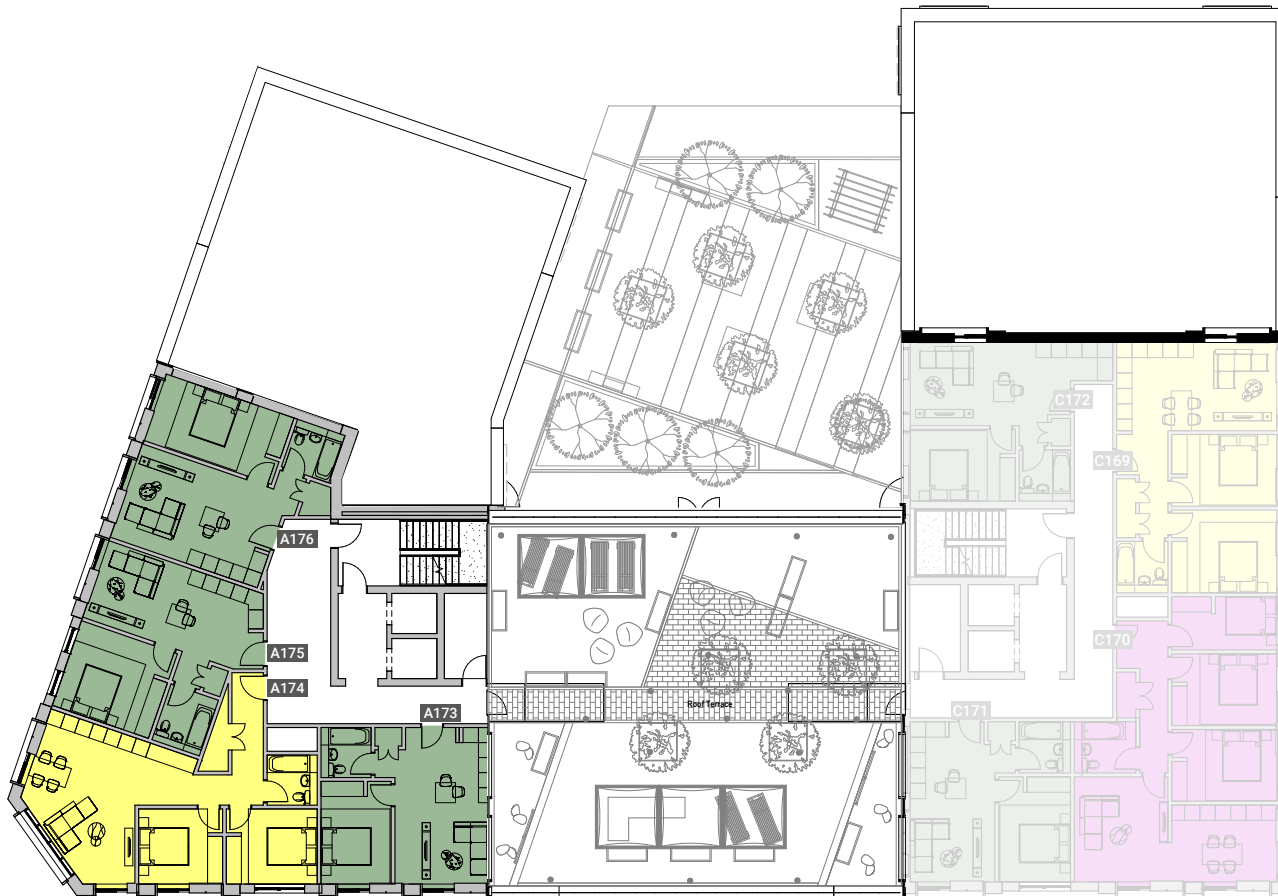
A175

Rooms	m
Kitchen	3.1 x 2.0
Living Room	3.2 x 3.1
Bathroom	2.3 x 2.0
Bedroom 1	4.1 x 3.6

One Bed Apartment - 48 sqm
- 517 sqft

A176

Rooms	m
Kitchen	3.0 x 1.4
Living Room	4.0 x 3.1
Bathroom	2.0 x 2.0
Bedroom 1	4.1 x 2.8



Floor 12

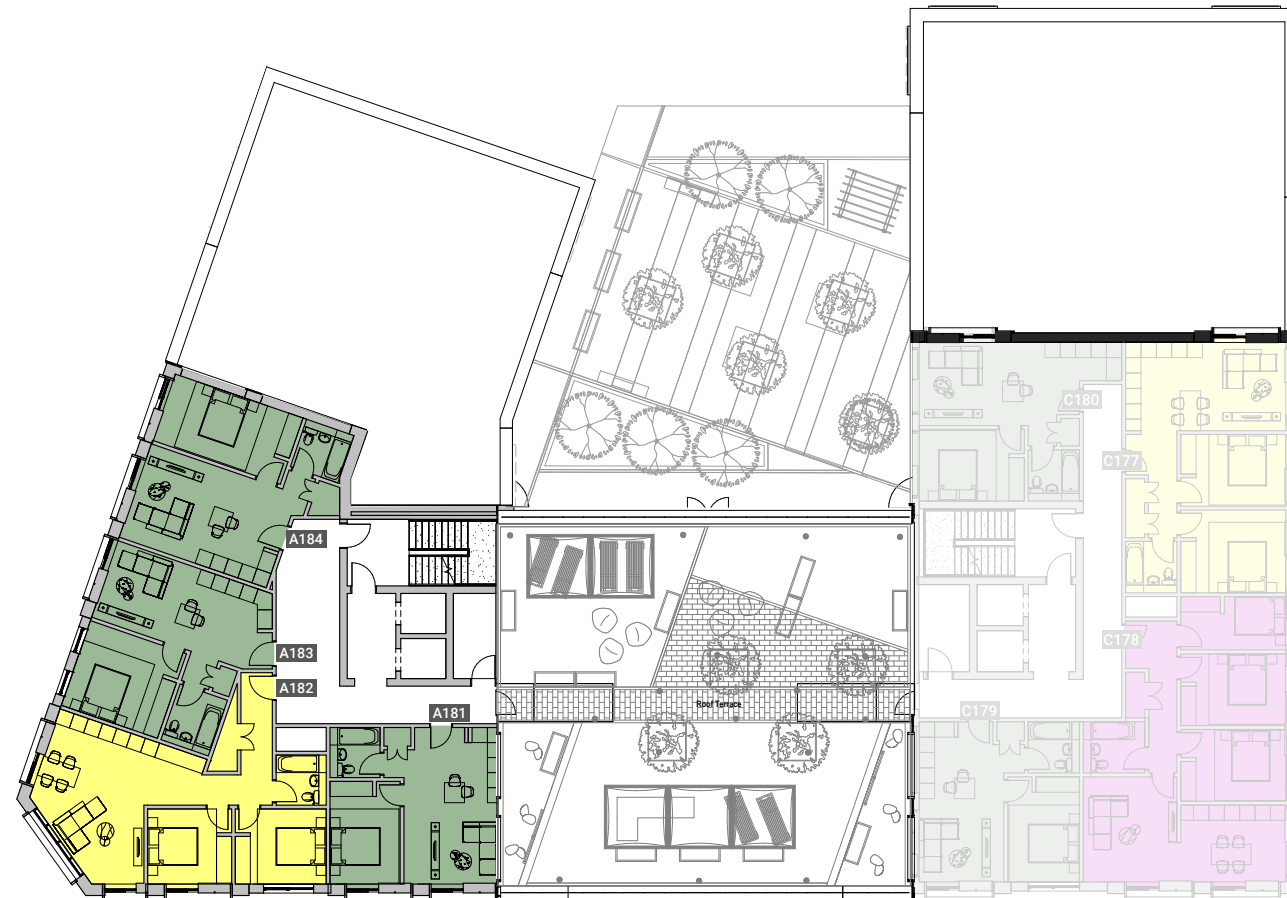
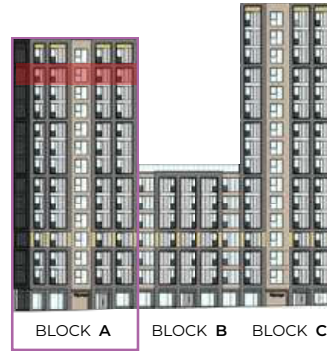
Apartments A181 - A184



1-BED

2-BED

3-BED



Please note: Elevation is indicative to show floor position relative to building.

**Where possible measurements have been taken from the central point of the room.

**The listed dimensions are indicative and are for reference only. These dimensions do not relate to the overall apartment areas. i.e angled floor plans and internal rooms.

One Bed Apartment - 43 sqm
- 462 sqft

A181

Rooms	m
Kitchen	3.0 x 1.4
Living Room	4.1 x 3.1
Bathroom	2.0 x 2.0
Bedroom 1	4.1 x 2.7

Two Bed Apartment - 67 sqm
- 721 sqft

A182

Rooms	m
Kitchen	4.3 x 2.0
Living Room	3.2 x 2.3
Bathroom	2.0 x 2.0
Bedroom 1	3.6 x 3.0
Bedroom 2	3.2 x 3.0

One Bed Apartment - 45 sqm
- 484 sqft

A183

Rooms	m
Kitchen	3.1 x 2.0
Living Room	3.2 x 3.1
Bathroom	2.3 x 2.0
Bedroom 1	4.1 x 3.6

One Bed Apartment - 48 sqm
- 517 sqft

A184

Rooms	m
Kitchen	3.0 x 1.4
Living Room	4.0 x 3.1
Bathroom	2.0 x 2.0
Bedroom 1	4.1 x 2.8

Floor 13

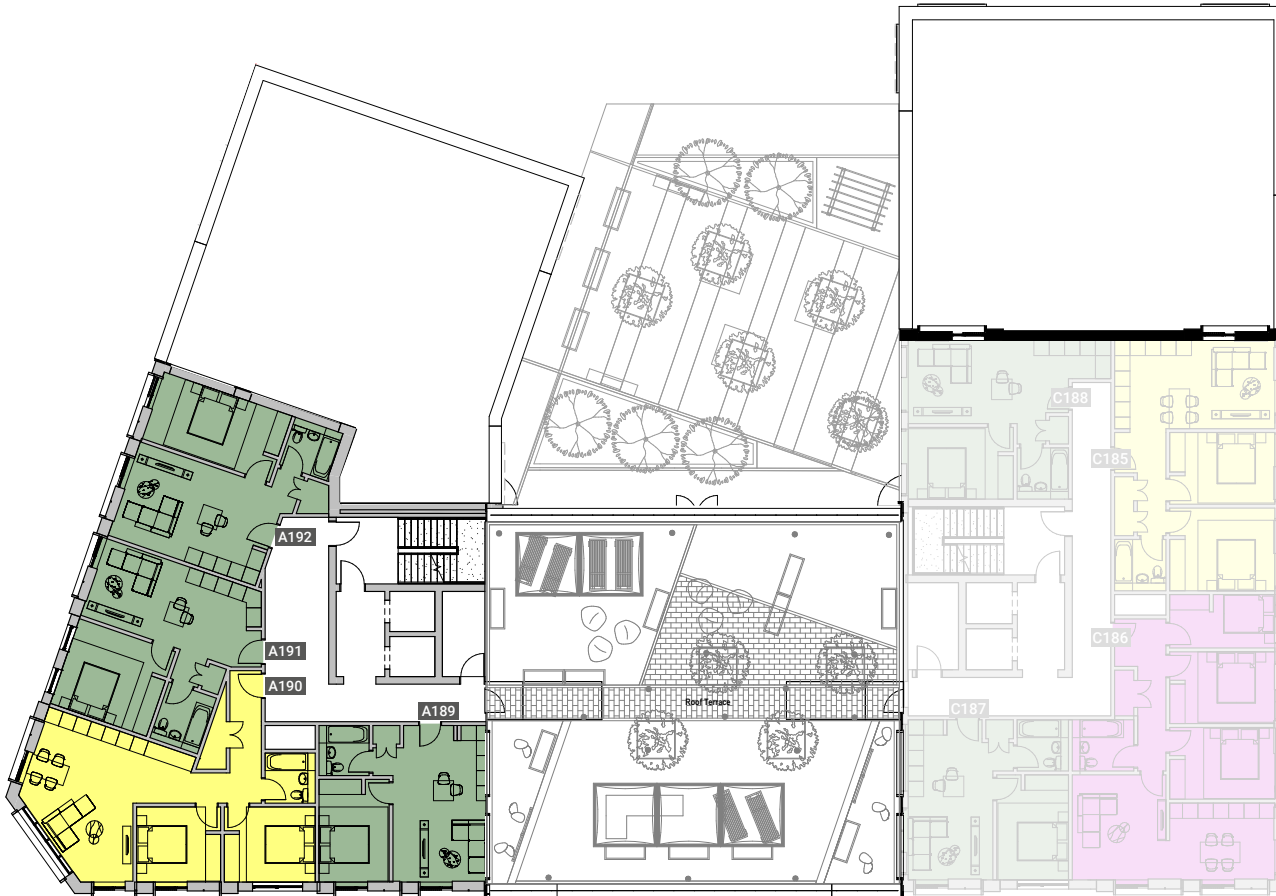
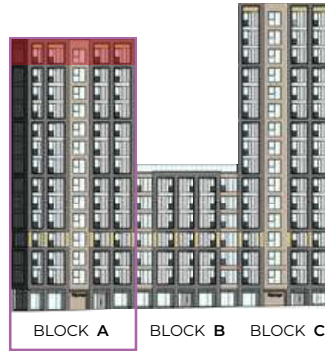
Apartments A189 - A192



1-BED

2-BED

3-BED



Please note: Elevation is indicative to show floor position relative to building.

**Where possible measurements have been taken from the central point of the room.

**The listed dimensions are indicative and are for reference only. These dimensions do not relate to the overall apartment areas. i.e angled floor plans and internal rooms.

One Bed Apartment - 43 sqm
- 462 sqft
A189

Rooms	m
Kitchen	3.0 x 1.4
Living Room	4.1 x 3.1
Bathroom	2.0 x 2.0
Bedroom 1	4.1 x 2.7

Two Bed Apartment - 67 sqm
- 721 sqft
A190

Rooms	m
Kitchen	4.3 x 2.0
Living Room	3.2 x 2.3
Bathroom	2.0 x 2.0
Bedroom 1	3.6 x 3.0
Bedroom 2	3.2 x 3.0

One Bed Apartment - 45 sqm
- 484 sqft
A191

Rooms	m
Kitchen	3.1 x 2.0
Living Room	3.2 x 3.1
Bathroom	2.3 x 2.0
Bedroom 1	4.1 x 3.6

One Bed Apartment - 48 sqm
- 517 sqft
A192

Rooms	m
Kitchen	3.0 x 1.4
Living Room	4.0 x 3.1
Bathroom	2.0 x 2.0
Bedroom 1	4.1 x 2.8



FLOOR PLANS
BLOCK A

