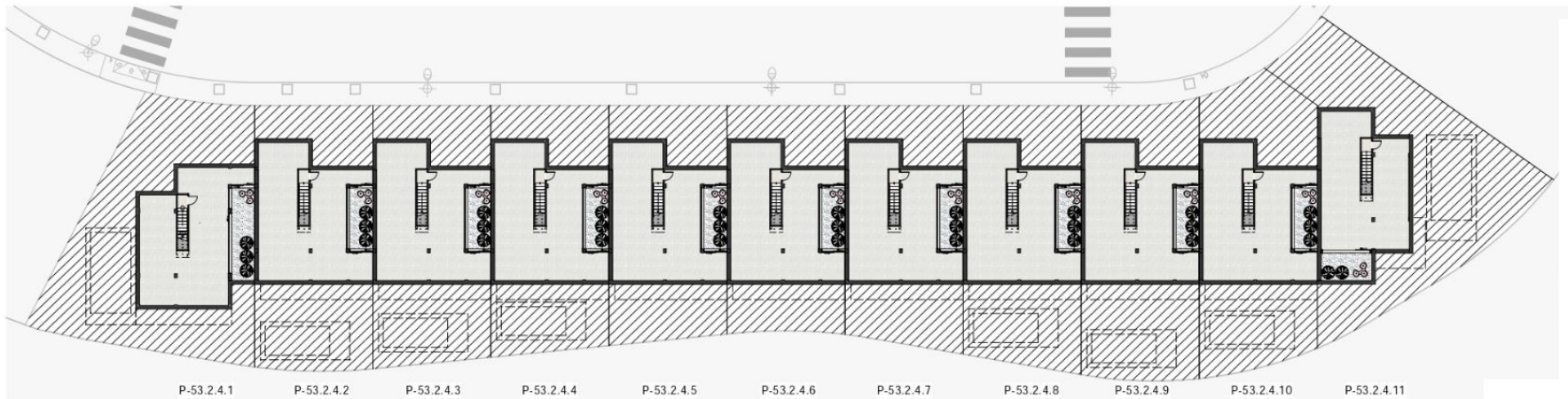
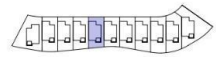
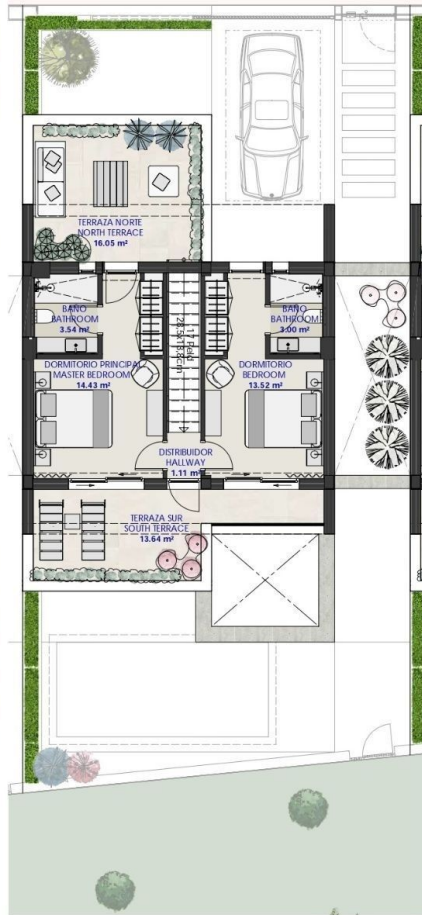
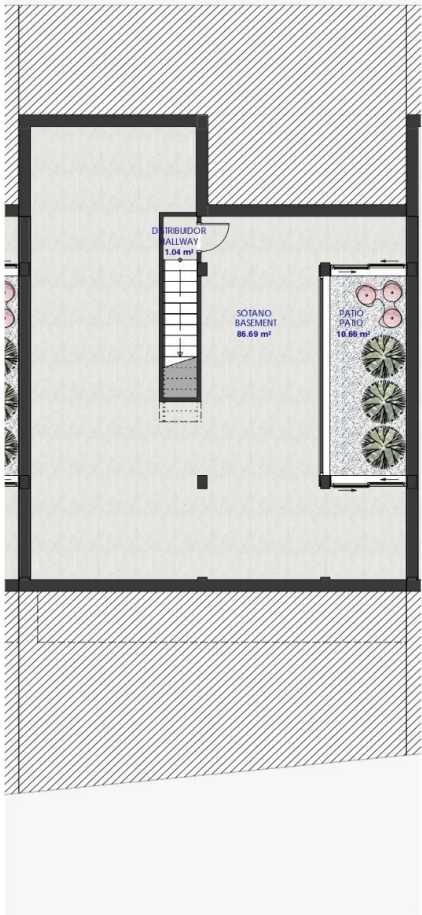


PARCELA	SUPERFICIE
P-53.2.4. 1	329,76 m ²
P-53.2.4. 2	235,23 m ²
P-53.2.4. 3	229,07 m ²
P-53.2.4. 4	218,75 m ²
P-53.2.4. 5	208,43 m ²
P-53.2.4. 6	201,56 m ²
P-53.2.4. 7	212,14 m ²
P-53.2.4. 8	230,52 m ²
P-53.2.4. 9	244,85 m ²
P-53.2.4. 10	249,86 m ²
P-53.2.4. 11	337,55 m ²





P-53.2.4. 5

SUP. PARCELA PLOT AREA	208.43 m ²
SUP. CONSTRUIDA BUILT AREA	119.32 m ²
SUP. CONSTR. SOTANO BASEMENT BUILT AREA	116.69 m ²