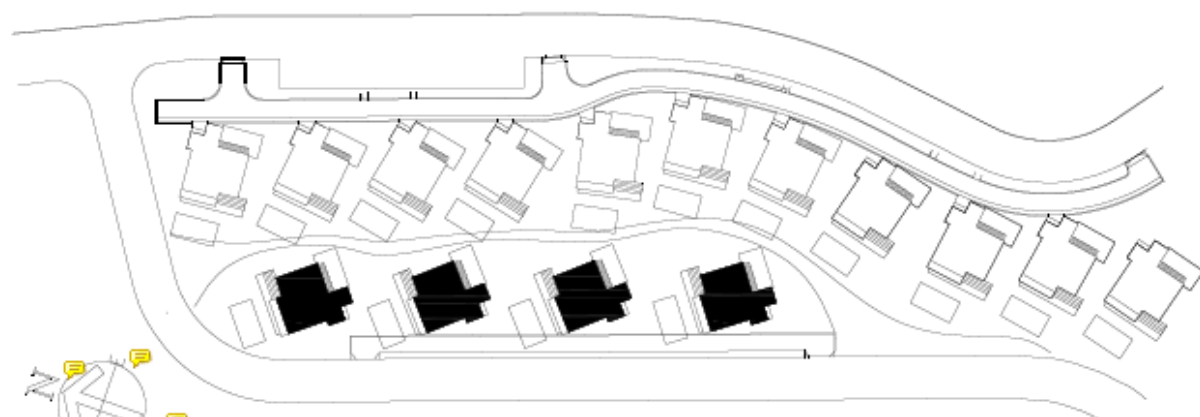


# VILLA TYPE A GROUND FLOOR



## Planta Baja

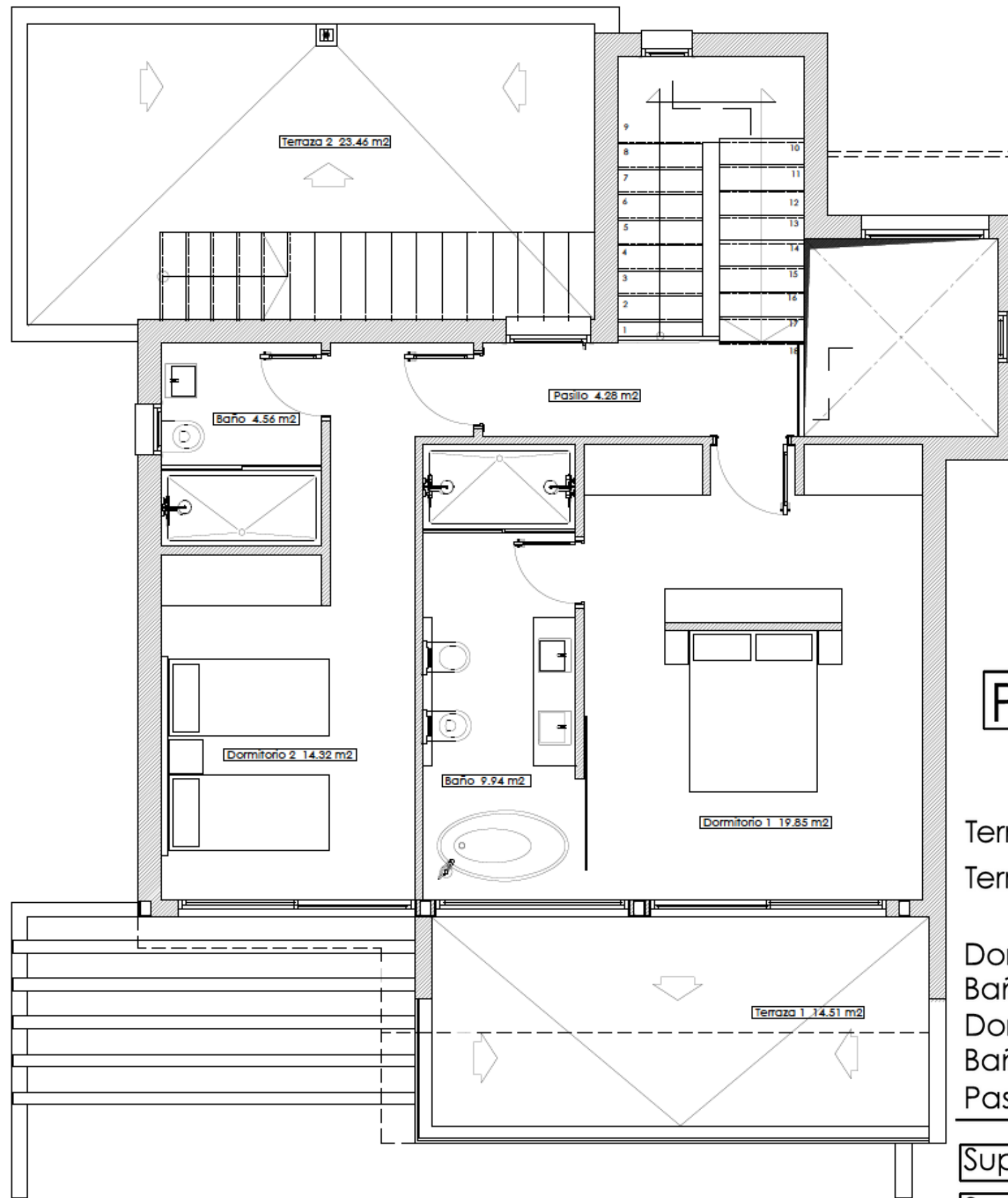
Terraza	38.47 m <sup>2</sup>
Terraza cubierta	11.34 m <sup>2</sup>
Estar / comedor / cocina	55.22 m <sup>2</sup>
Hall	4.00 m <sup>2</sup>
Dormitorio 3	12.14 m <sup>2</sup>
Baño	4.64 m <sup>2</sup>
Pasillo	1.80 m <sup>2</sup>
<b>Sup. util</b>	<b>77.80 m<sup>2</sup></b>
<b>Sup. const.</b>	<b>104.91 m<sup>2</sup></b>



Key plan

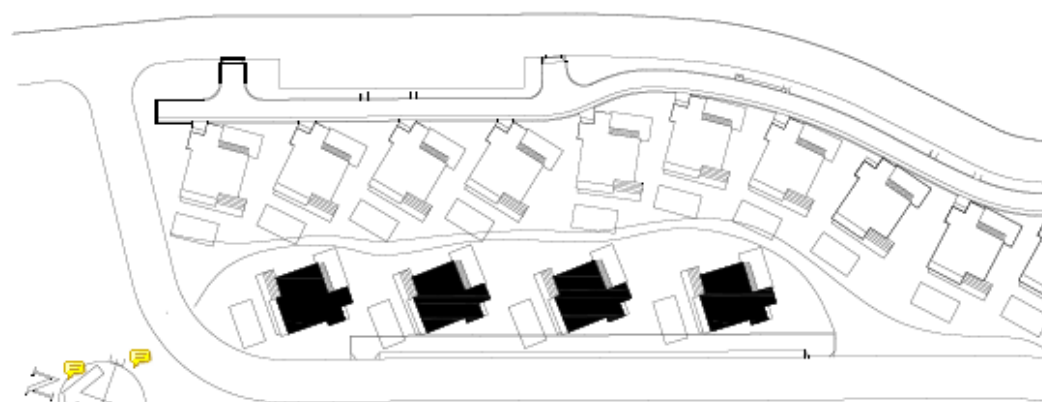
# VILLA TYPE A

## 1st FLOOR



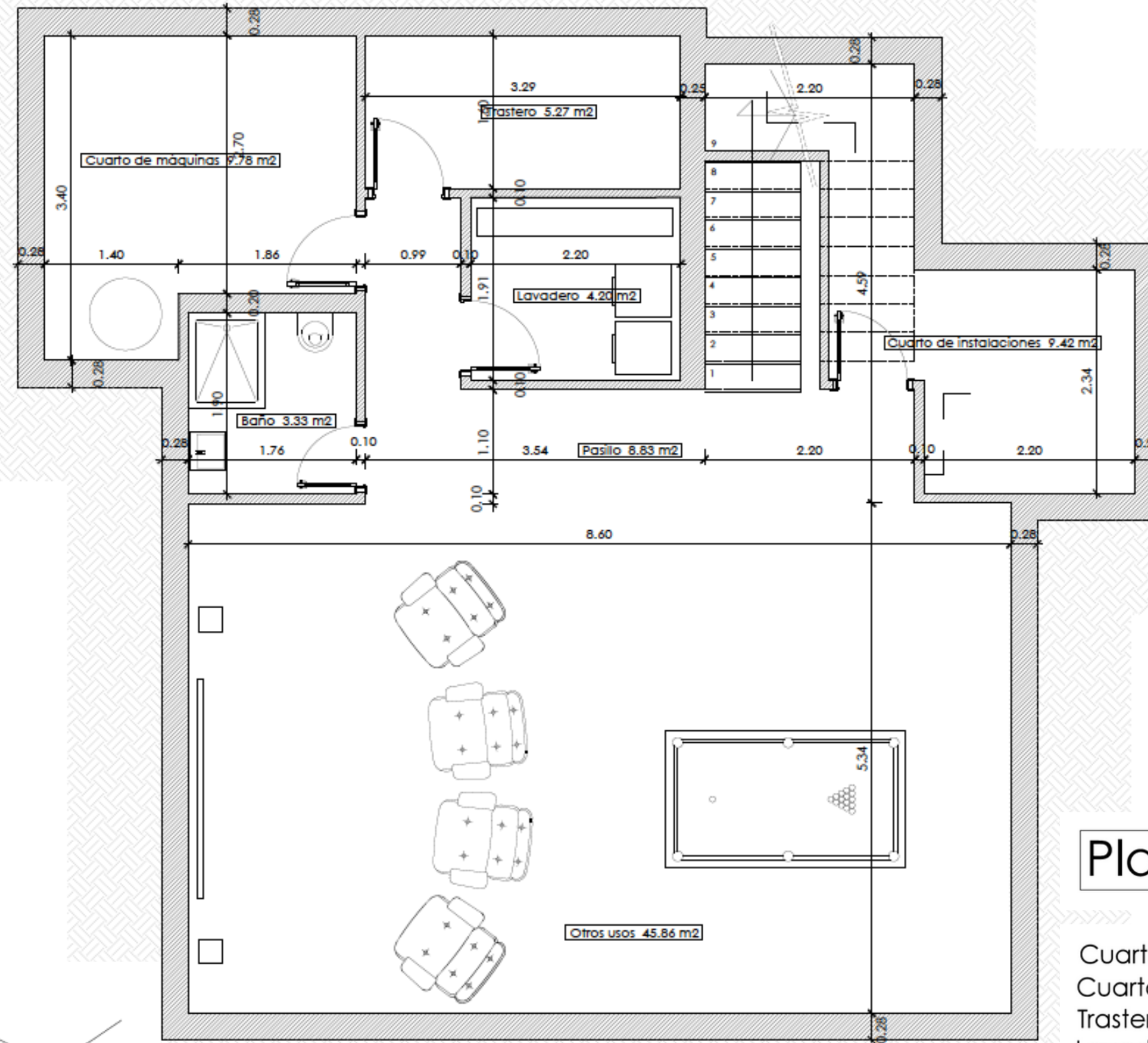
### Planta 1°

Terraza 1	10.57 m <sup>2</sup>
Terraza 2	21.08 m <sup>2</sup>
Dormitorio 1	19.05 m <sup>2</sup>
Baño	9.57 m <sup>2</sup>
Dormitorio 2	13.82 m <sup>2</sup>
Baño	4.64 m <sup>2</sup>
Pasillo	4.28 m <sup>2</sup>
Sup. util	51.36 m <sup>2</sup>
Sup. const.	73.82 m <sup>2</sup>



Key plan

# VILLA TYPE B BASEMENT



Key plan

## Planta sótano

Cuarto de máquinas	7.31 m2
Cuarto de instalaciones	8.68 m2
Trastero	5.35 m2
Lavadero	4.28 m2
Baño	3.22 m2
Otros usos	43.84 m2
Pasillo	8.97 m2

Sup. util	81.65 m2
Sup. cons.	98.78 m2

**VILLA TYPE A**  
TERRACE  
SOLARIUM



Key plan

