

möglicher Neubau-
Anbau

Bestandsgebäude

Berechnung des umbauten Raumes:

GF aus CAD

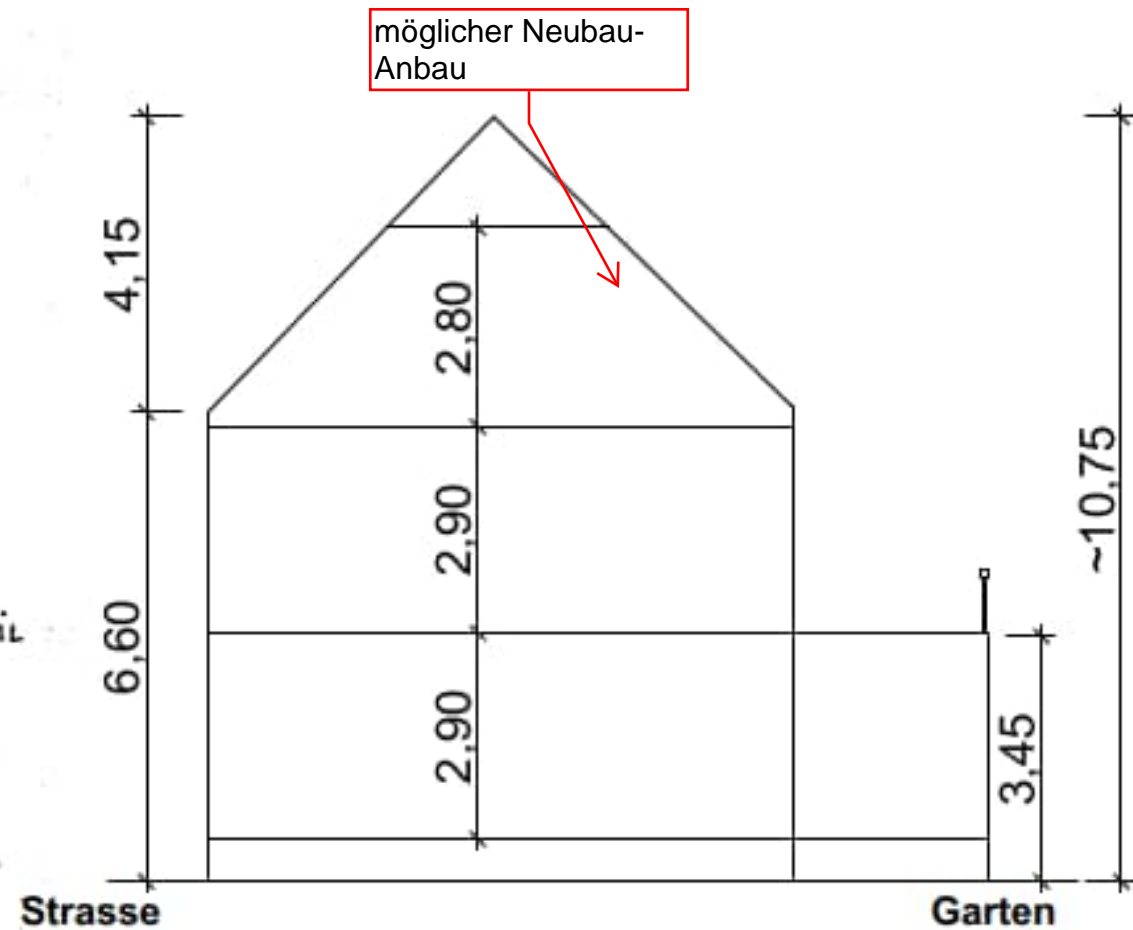
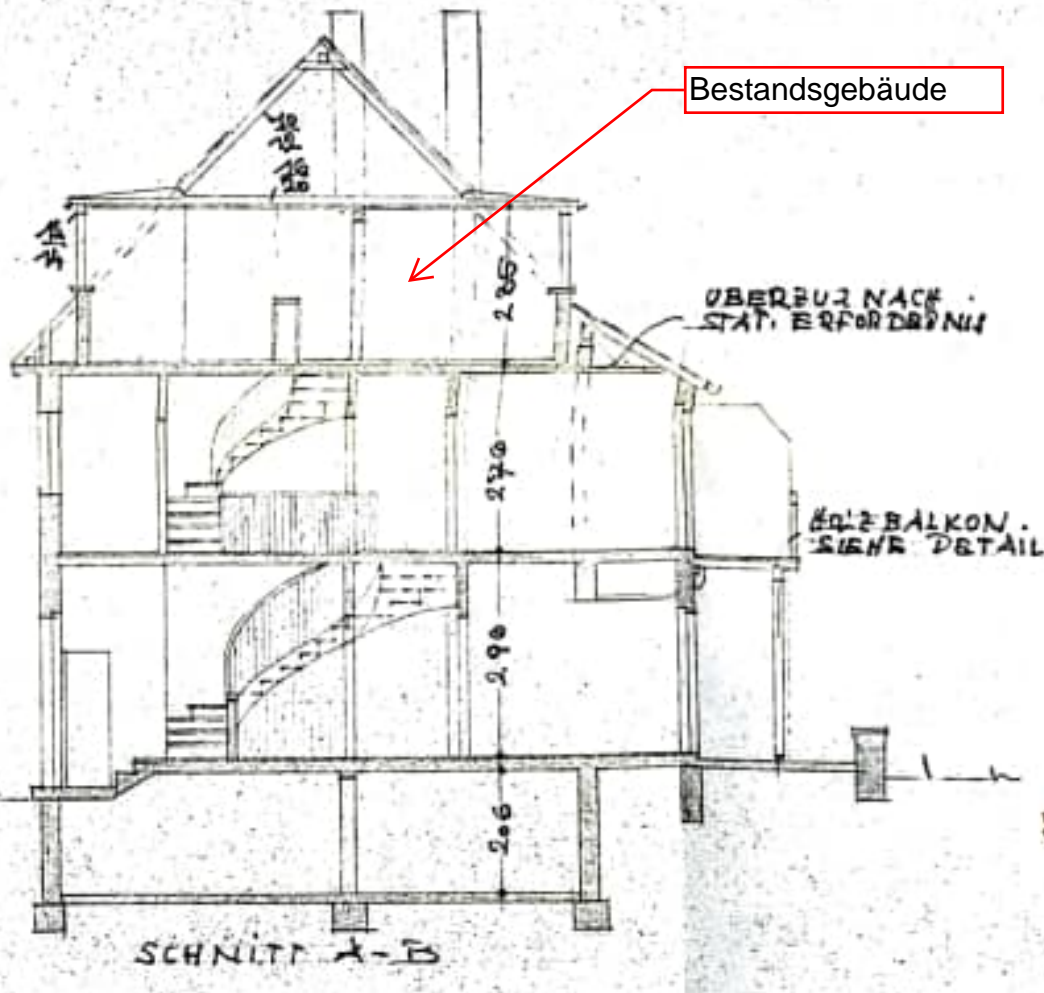
$$71,54\text{m}^2 \cdot 6,60\text{m} = 472,16\text{m}^3$$

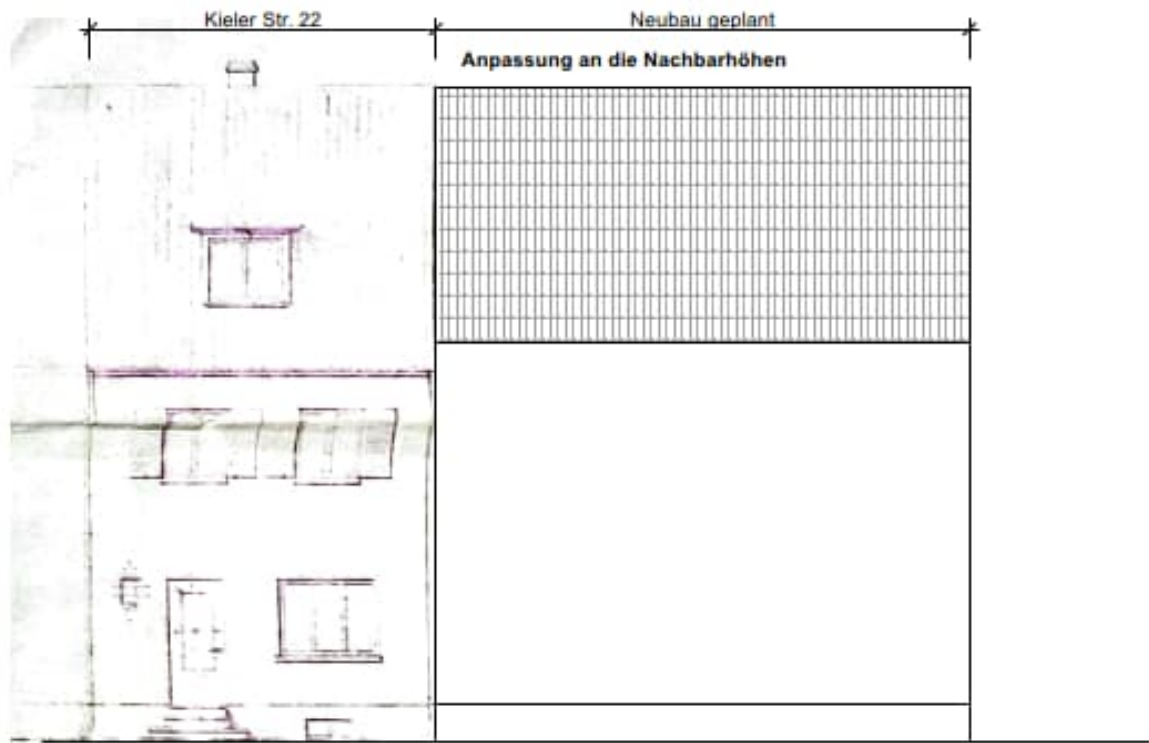
$$(8,10\text{m} \cdot 4,15\text{m})/2 \cdot 9\text{m} = 151,26\text{m}^3$$

$$24,82\text{m}^2 \cdot 3,45\text{m} = 85,63\text{m}^3$$

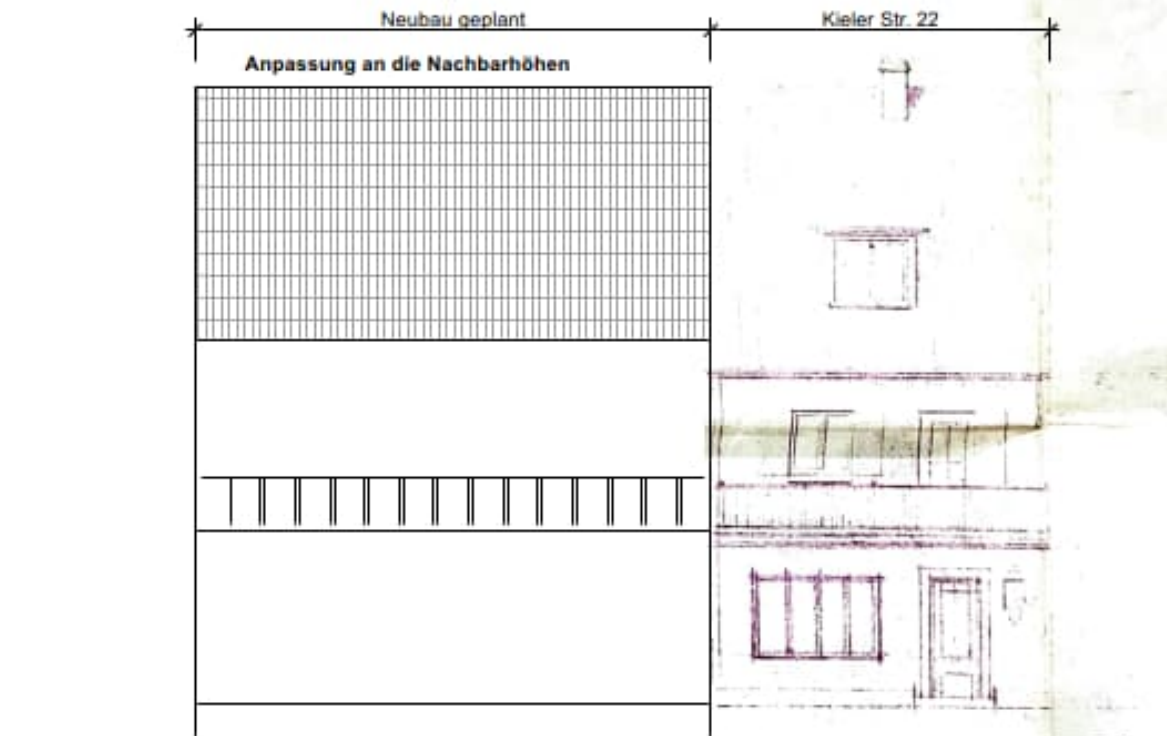
$$\text{umbauter Raum total} = 709,05\text{m}^3$$

100



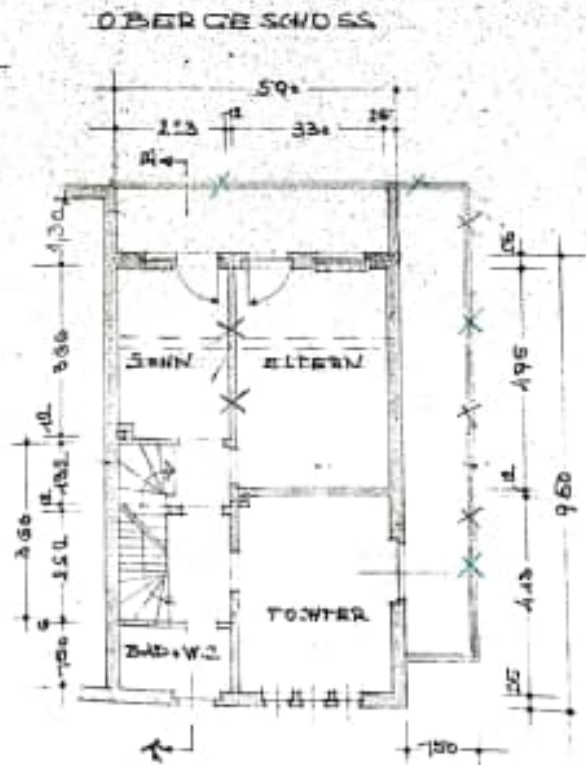
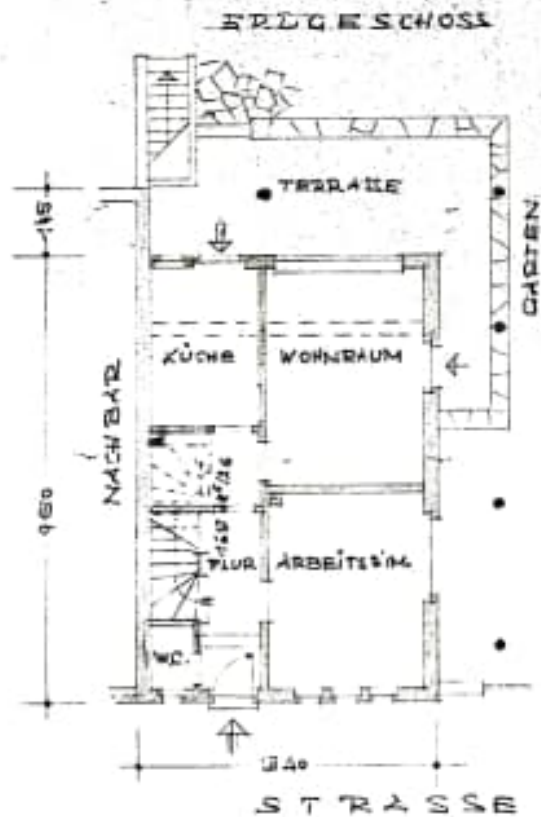
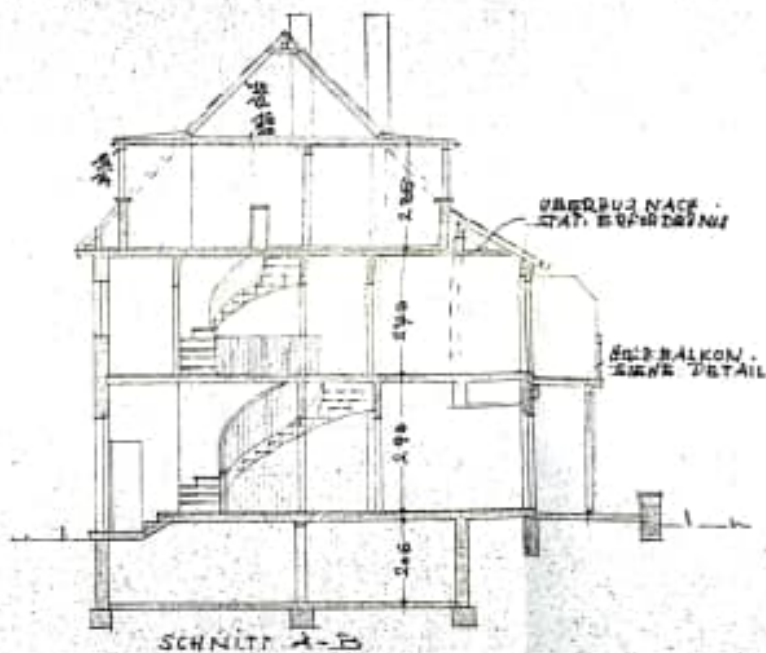
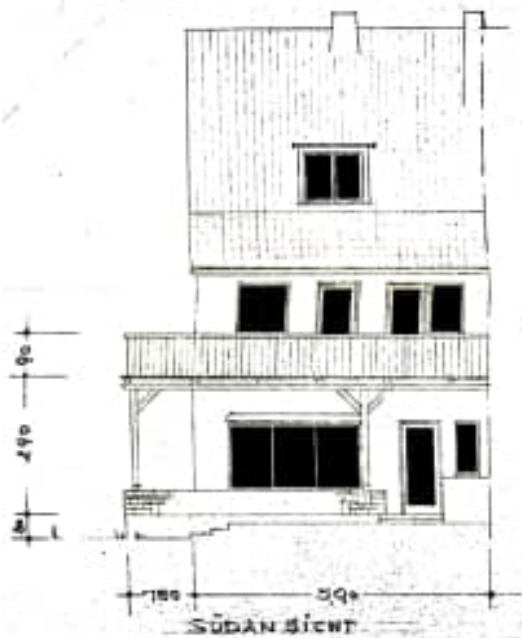


Ansicht Strasse



Ansicht Garten

M 2 SSTAB 1:100



Baugenossenschaft
 Eing. 24. JULI 1956
 Bes.

Handwritten signature

Genehmigt

am 15. OKTOBER
 STADT KÖLN
 Der Oberbürgermeister
Handwritten signature

KÖLN IM JULI 1953

DES BAUHERN
Handwritten signature

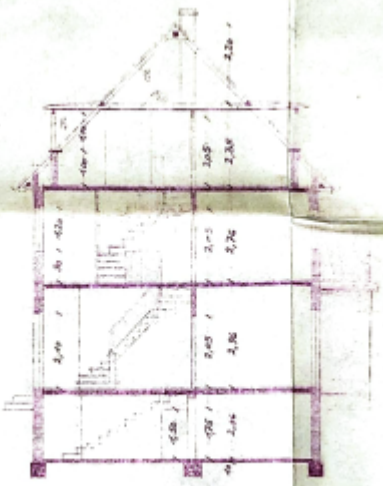
DRE ARCHITELT
 DR. ING. WERNER
 RÖHN
 RICH. FET
Handwritten signature



STRASSENANSICHT



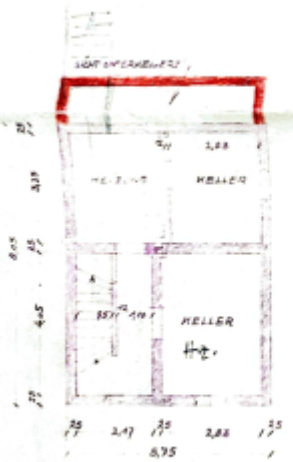
GARTENANSICHT



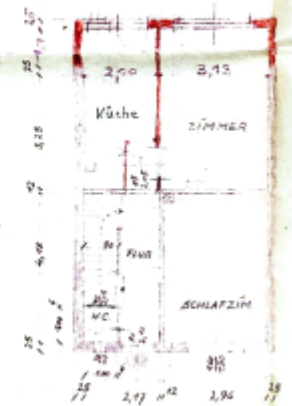
GUERSCHNITT

DER

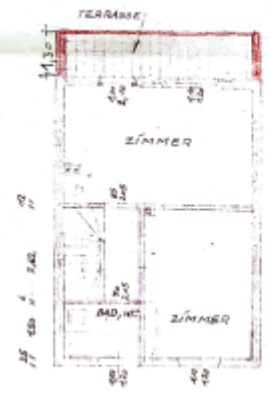
DER



KELLER



ERDGESCHOSS



OBERGESCHOSS



DACHGESCHOSS