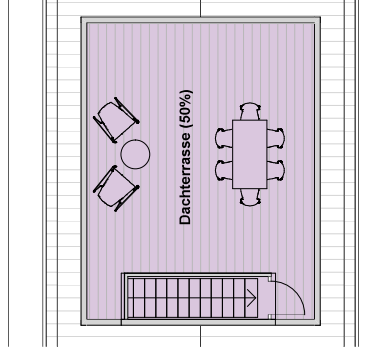
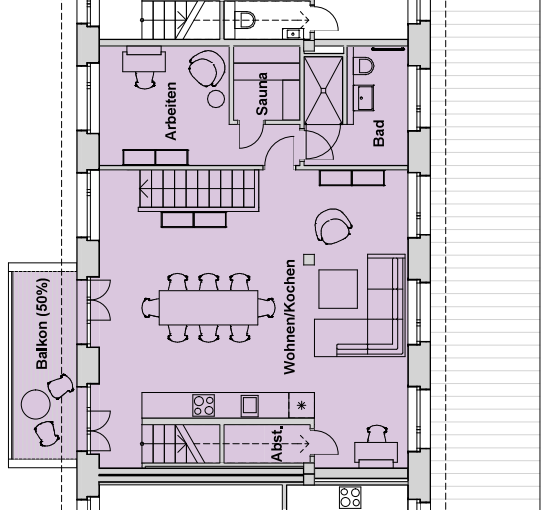
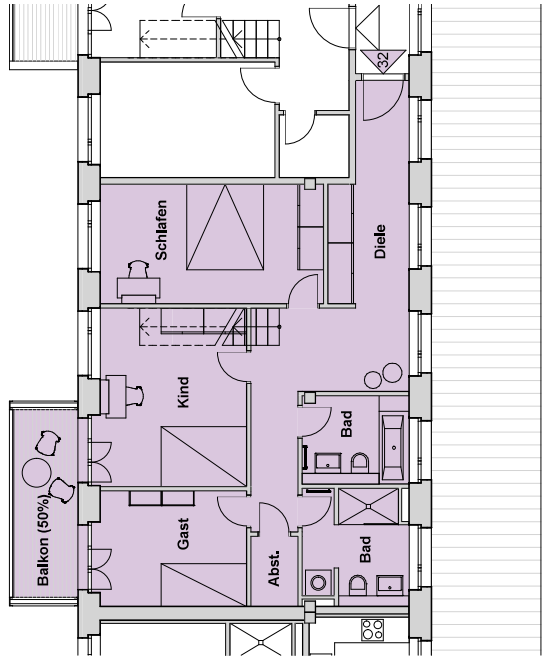


WOHNUNG 32 | 4.OG



WOHNUNG 32 | 5. OG + DG

WOHNUNG 32 4,5-Zimmer-Wohnung

Diele 18,72 m²
Schlafen 14,56 m²
Kind 13,11 m²

Gast
Abstell
Bad

9,58 m²
1,80 m²
6,33 m²

Bad
Balkon (50%)

5,12 m²
3,68 m²

Wohnen/Kochen
Abstell
Arbeiten

43,87 m²
0,96 m²
10,08 m²

Sauna
Bad
Balkon (50%)

2,69 m²
6,38 m²
3,68 m²

Dachterrasse (50%)

16,58 m²

Gesamt

157,14 m²