

1.56 5.14 37 1.20 30 1.70 2.75 1.39 18 90 52 25

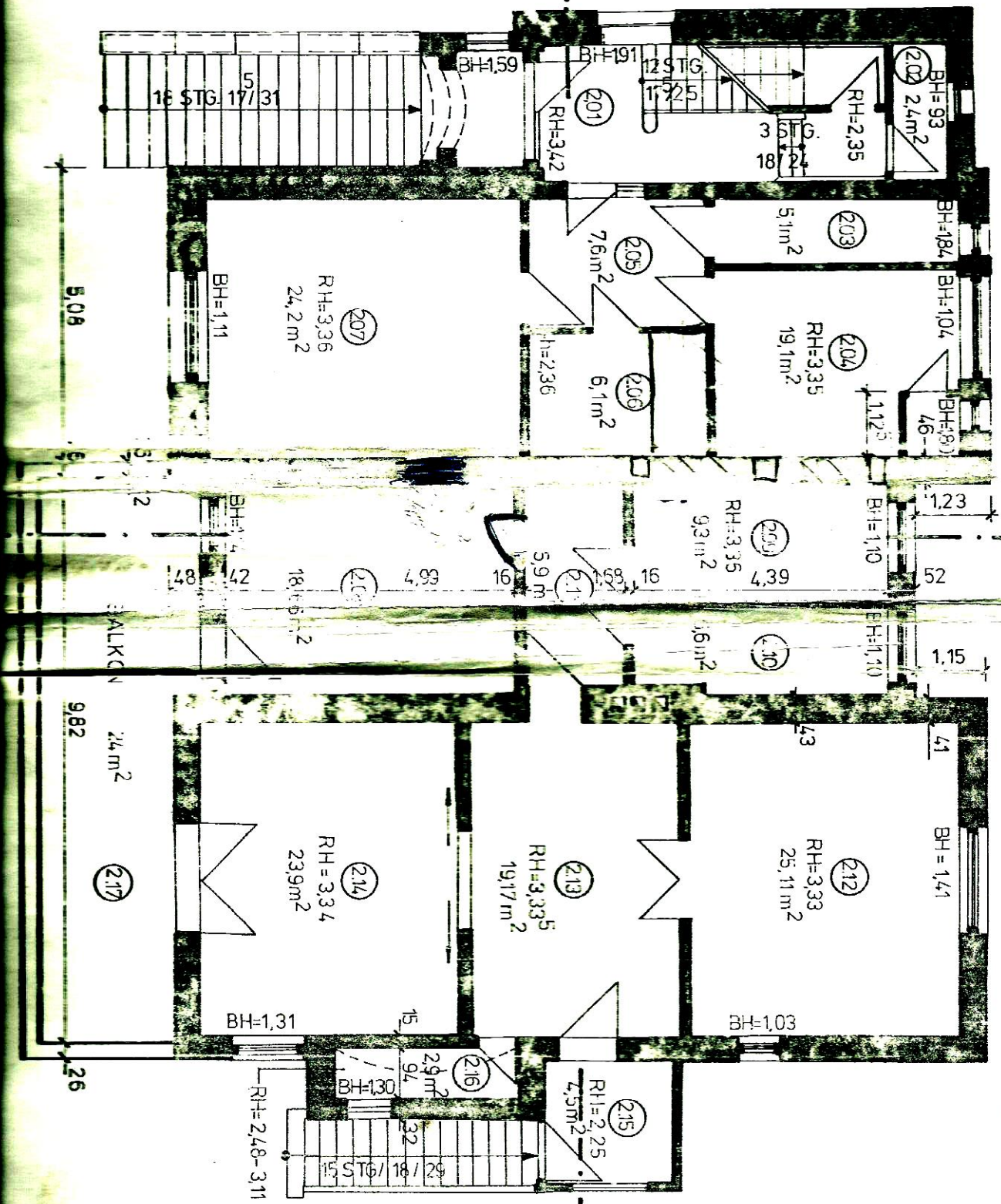
2.52 4.18 85 0.78 6 1.59 1.24 5.08



55 2.37 30 1.22 12 3.15 365 1.79 365 1.57 57 2.13 5 1.56 43 5.40 1.84 2.19 1.07 1.24 46 104 89 59 1.69 1.83 1.65 28 127 63 2.02 1.31 25 2.19 1.48 2.19 41



2.08 - 2.17



87 1.31 12 60 79 2.56 59 1.31 57 1.03 71 3.49 8

42 1.00 4.43 24 3.55 14 4.65 52

2.52 2.30 6.42 5.23

16.47

