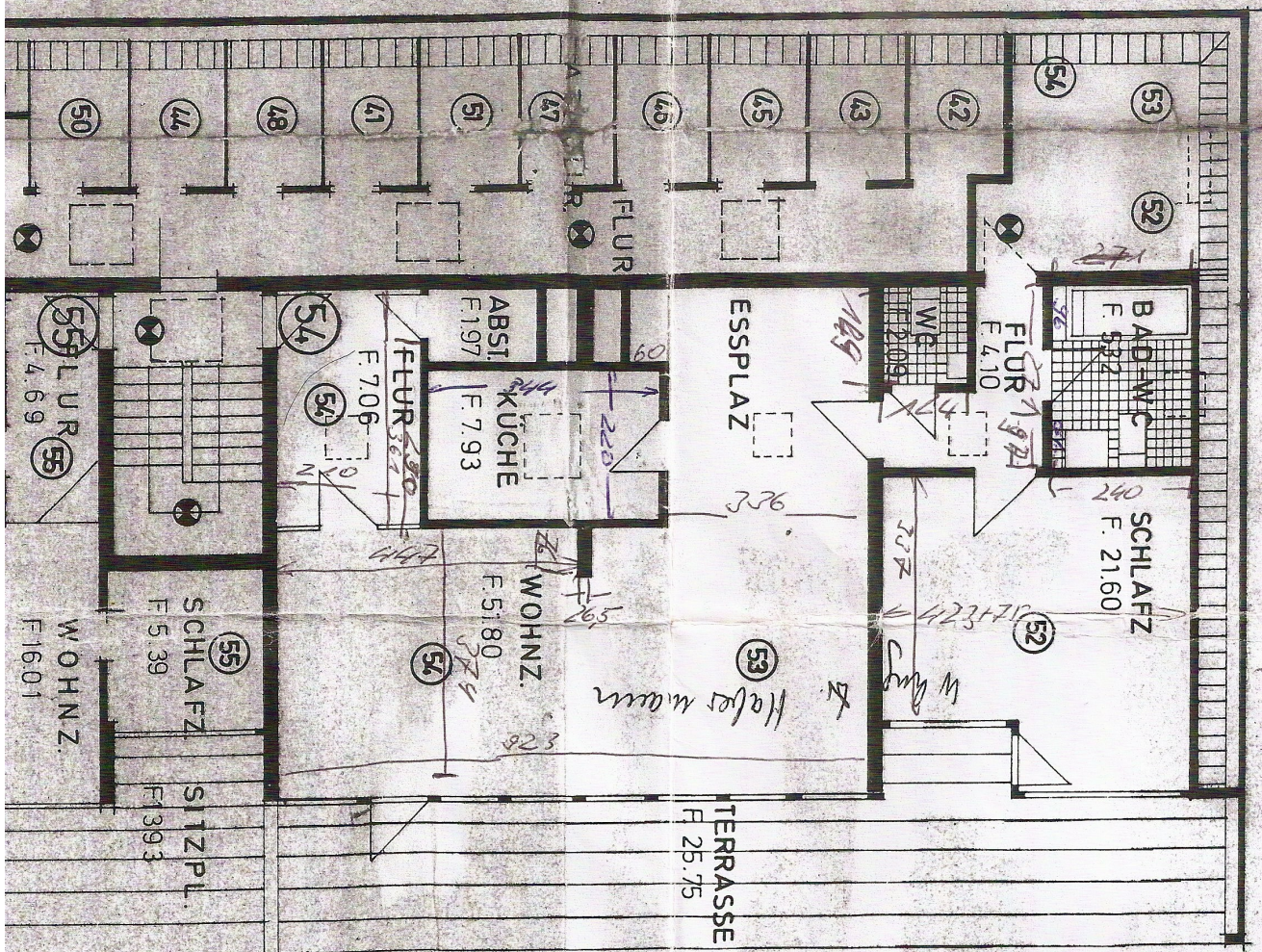


1.38⁵ 24 2.26 24 1.26 11⁵ 3.01 24 3.01 11⁵ 1.38⁵ 24 1.38⁵ 11⁵ 3.01 81



81 4.74 24 4.51 24 4.51 24 22.85 24 2.26 24 24 2.26 24 24

21.60
 4.10
 5.32
 51.84
 7.93
 1.97
 5

18 m²
 15 m²