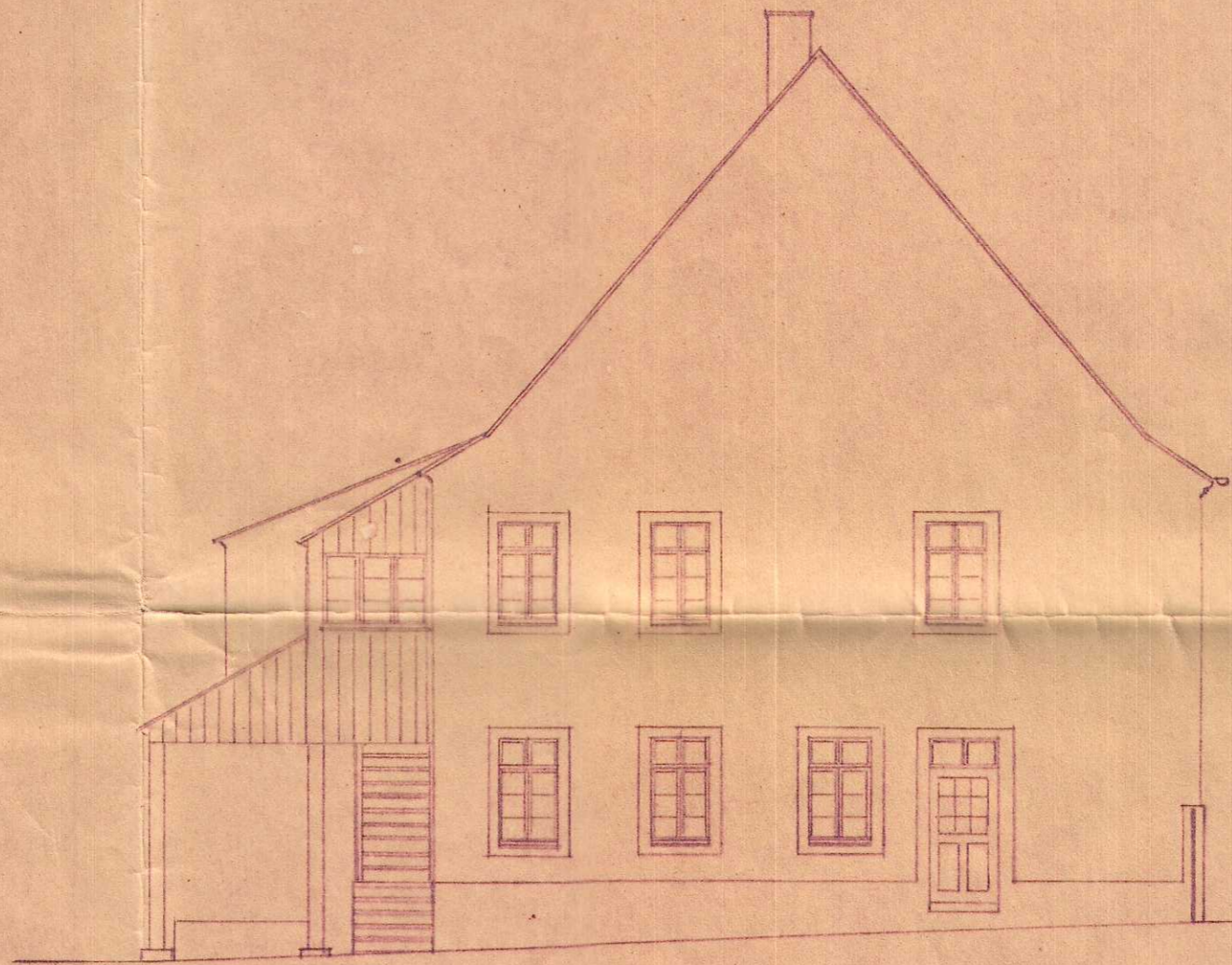
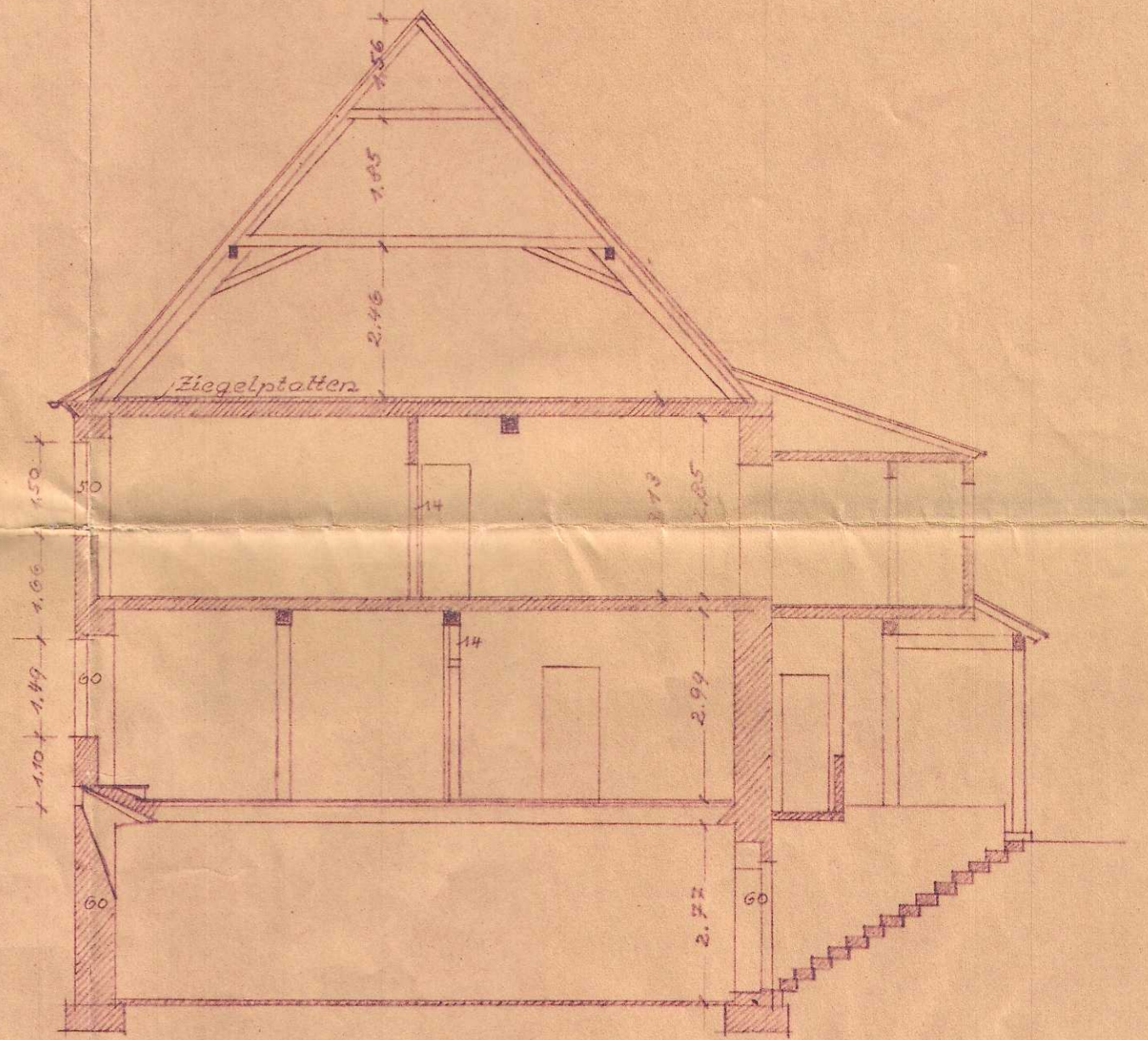


Straßenfront.

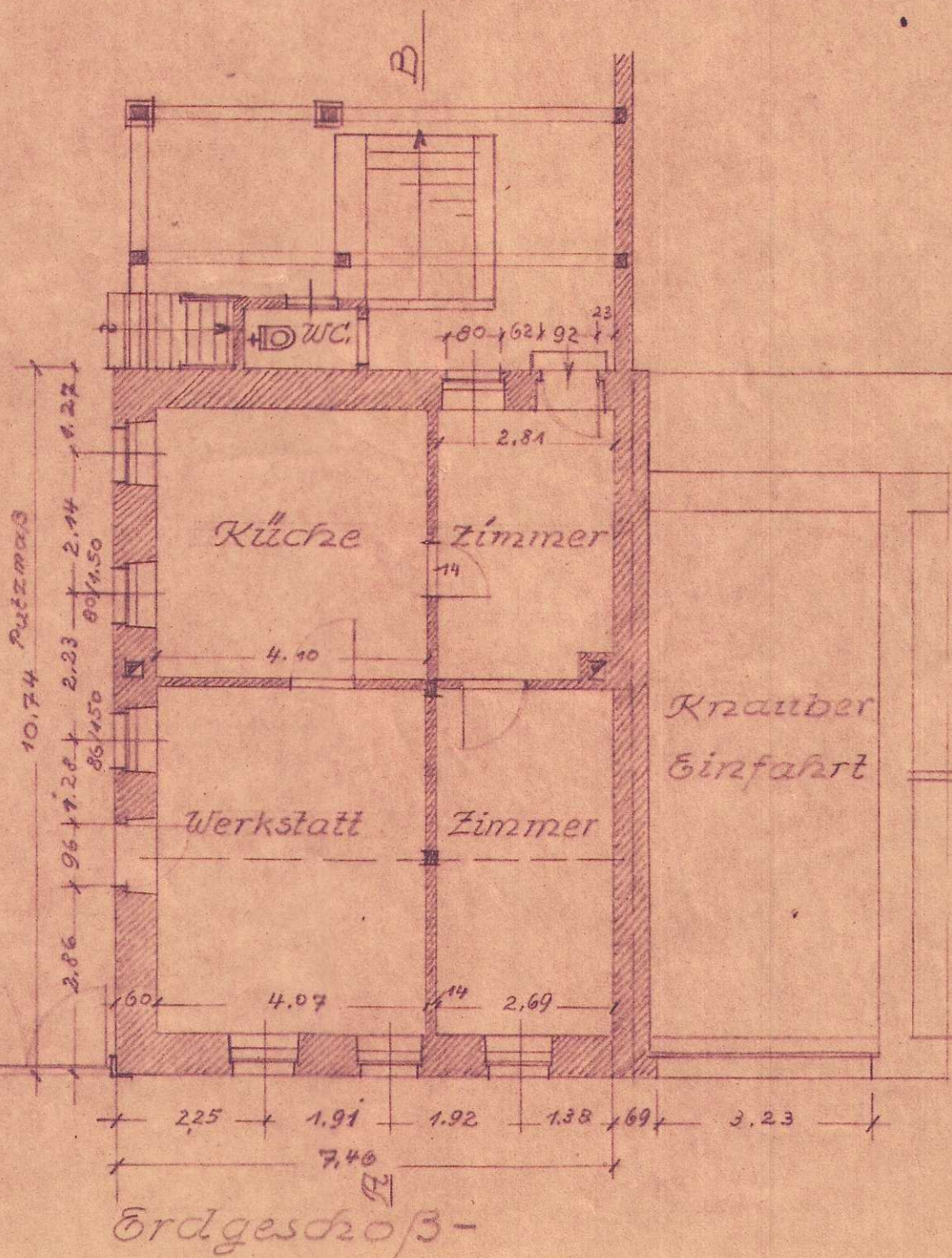


Seiten-Giebelfront.

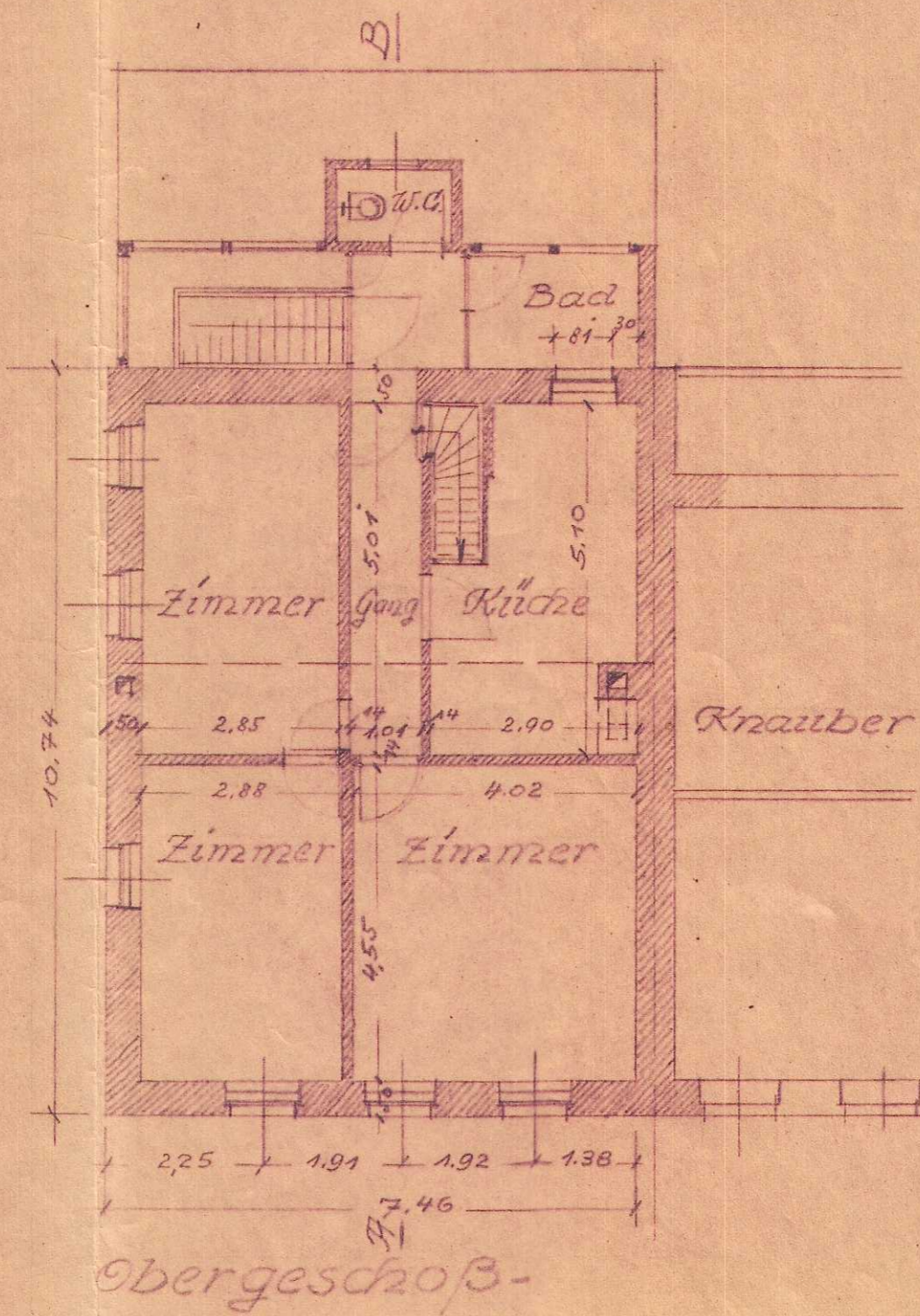
M. 1:1000.



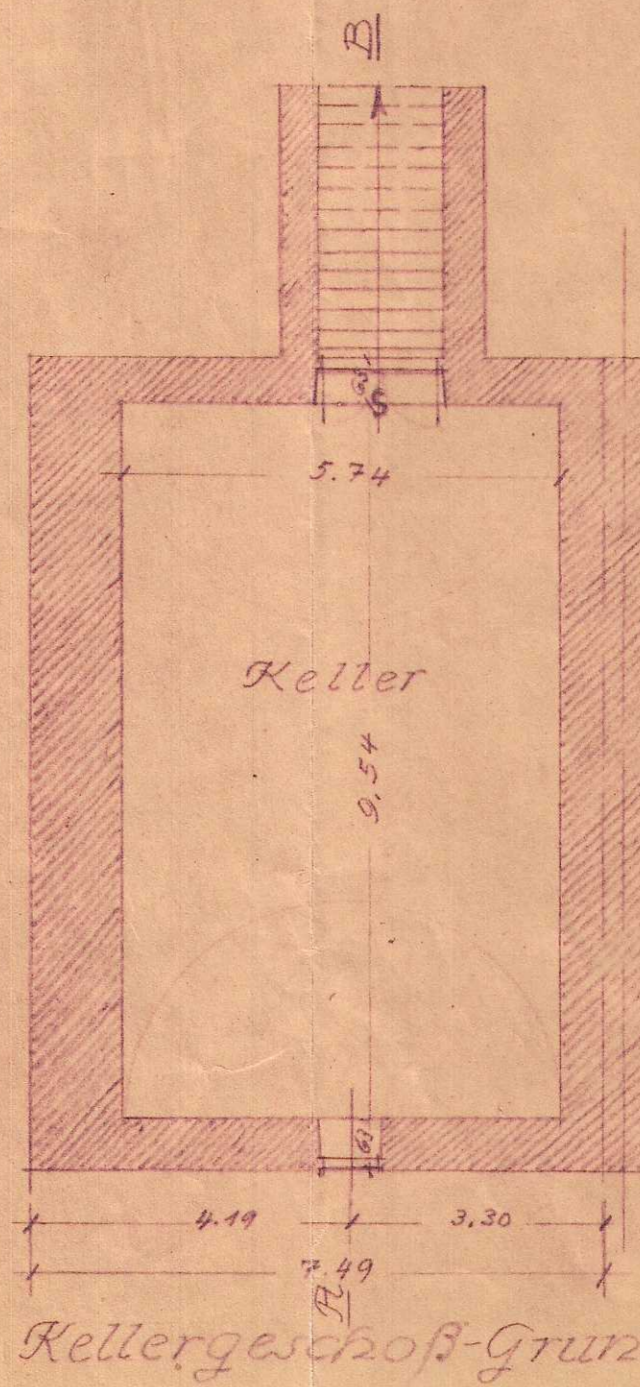
Querschnitt A-B.



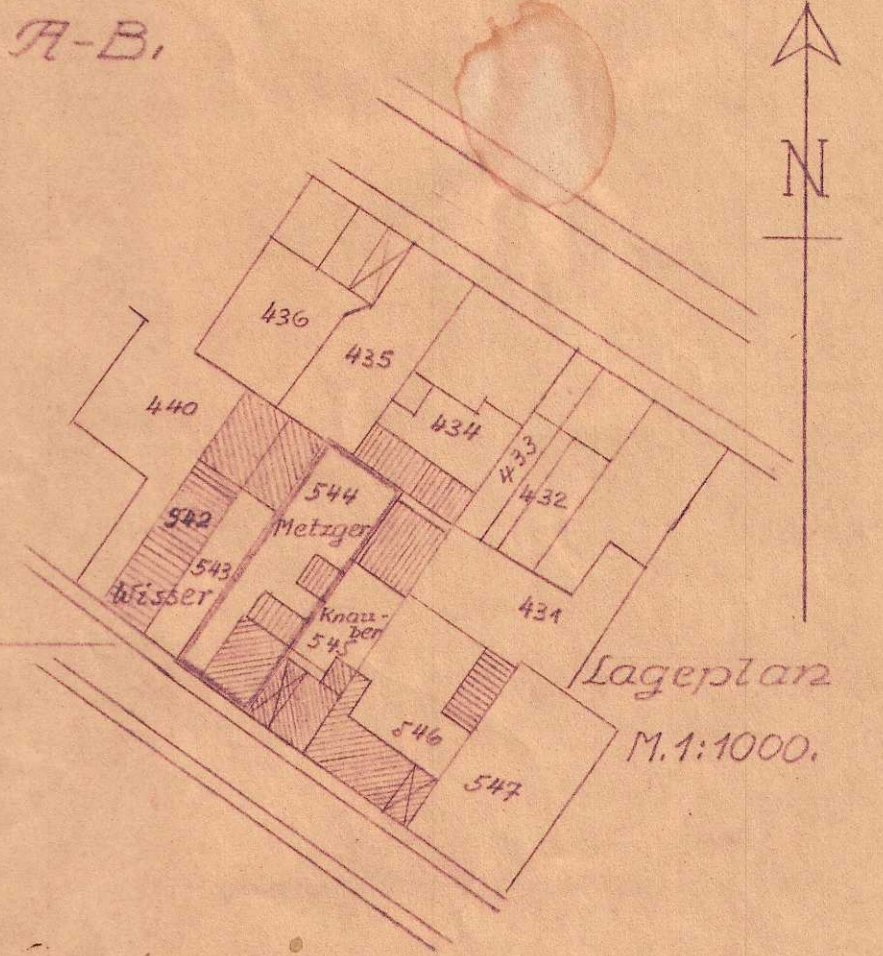
Erdgeschoss-Grundriß



Obergeschoss-Grundriß



Kellergeschoß-Grundriß



Lageplan M. 1:1000.

Rekonstruktionsplan vom Wohnhaus des Herrn Otto Metzger, in Zweibrücken, Ixheimerstr. № 8, Pl. № 544.

Zweibrücken, im Juni 1955.

OTTO SCHAEFER ARCHITECT B. Metzger
OTTO METZGER
Elektro
ZWEIBRÜCKEN