

DAMAC
Lagoons

IBIZA

IBIZA

A Spanish island in the western Mediterranean, Ibiza is famously known for its bustling nightlife, mystical historical sites, and natural scenic beauty.

It's the third-largest and the most popular of all Balearic Islands and attracts thousands of tourists every year from all over the world, especially in the summer.

While it's mainly known for its party scene, Ibiza also boasts beautiful beaches, fantastic shopping, and exciting festivals.

Ibiza became famous for its hippie movement and later for young tourism and clubbing, becoming the party capital of Europe. Tourists have been drawn to Ibiza because of its beautiful beaches and pleasant climate.

DJs travel the world to play at its world-famous nightclubs, chic beach clubs and banging pool parties.

DAMAC
Lagoons



DAMAC LAGOONS

THEMED ACTIVITY HUBS / RESIDENTIAL CLUSTERS



A large, stylized palm tree graphic in a light orange color, centered behind the text. The palm tree has a long, slender trunk and a large, fan-like frond. The frond is composed of several rounded, teardrop-shaped segments. The entire graphic is set against a solid orange background.

AMENITIES

I B I Z A



AMENITIES

FOAM PARTY - PLAYFUL, FAMILY-FRIENDLY FUN



AMENITIES

MUSIC FESTIVALS - SOUNDS FROM AROUND THE WORLD





AMENITIES

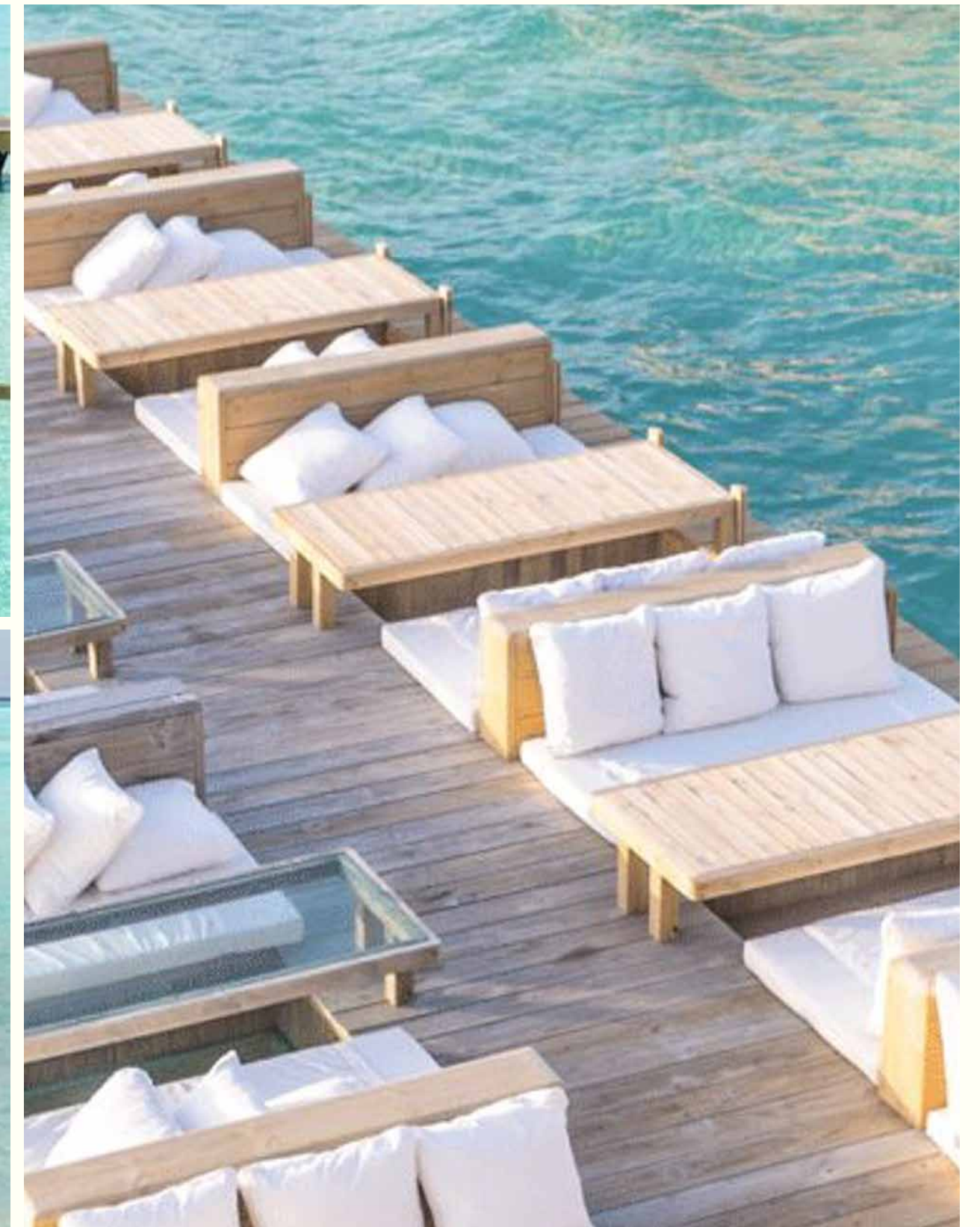
BOHO LOUNGE - CHIC VIBES SURROUNDED BY NATURE





AMENITIES

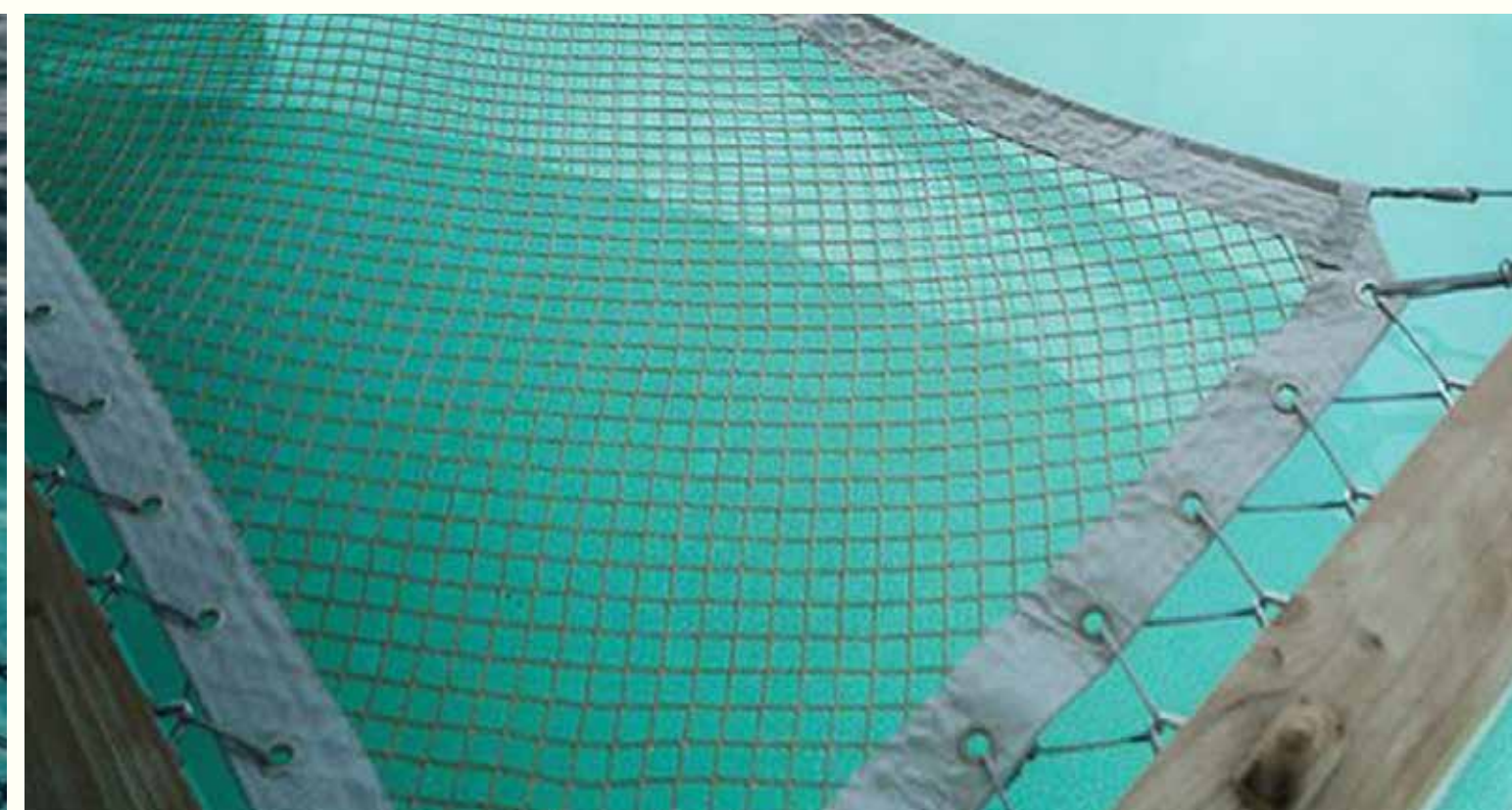
TAPAS LOUNGE – A SPANISH GASTRONOMIC EXPERIENCE





AMENITIES

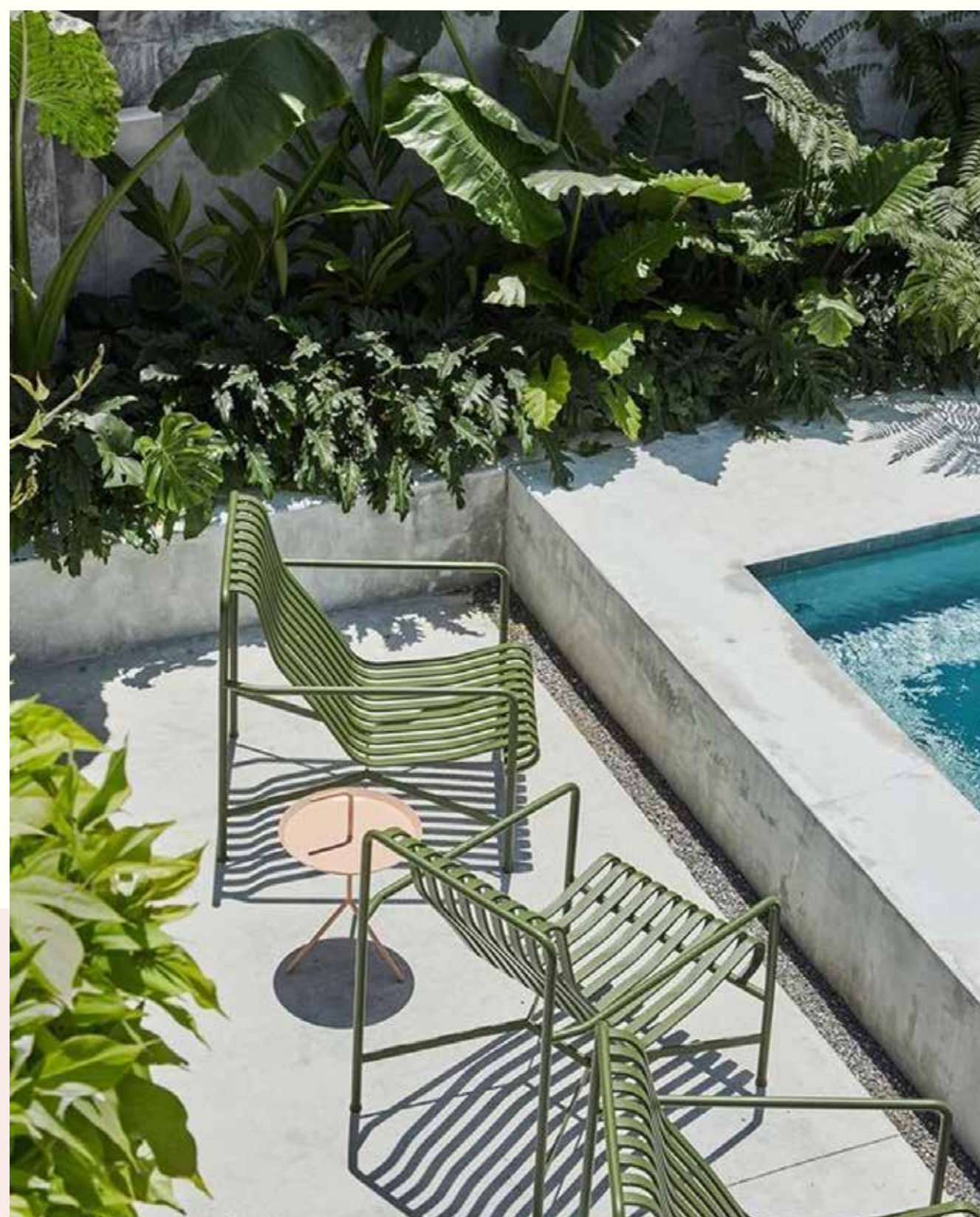
HAMMOCK CHILL - CHILL OUT AND RELAX





AMENITIES

SUNSET BEACH – UNWIND AND PARTY





LOOK & FEEL

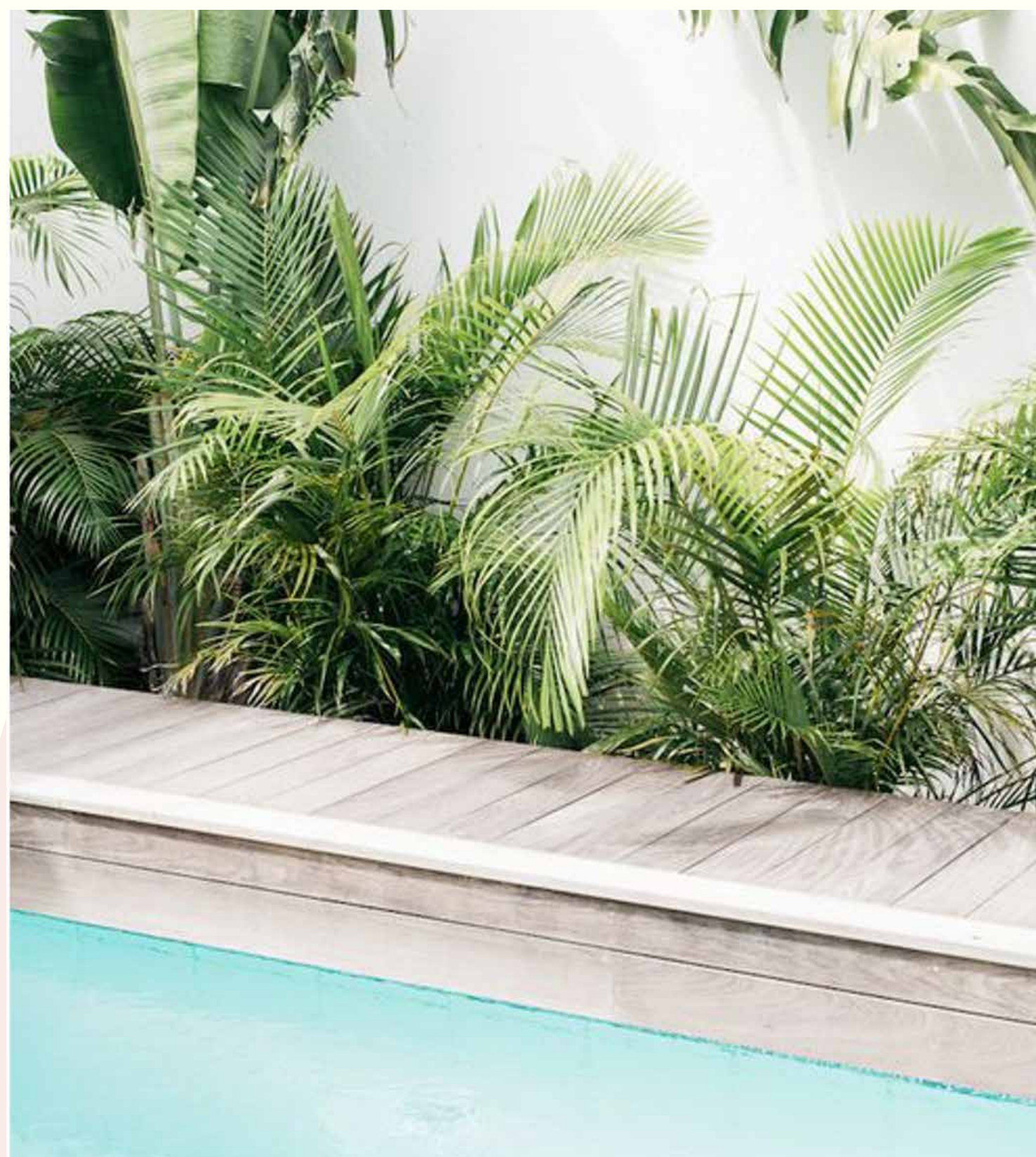
DAMAC
Lagoons





LOOK & FEEL

DAMAC
Lagoons





LOOK & FEEL



A large, faint, stylized silhouette of a palm tree is centered in the background. The trunk is a thin vertical line, and the fronds are composed of several broad, rounded shapes. The entire graphic is rendered in a light orange color against a darker orange background.

CLUSTER PLAN

IBIZA



CLUSTER PLAN



- LTH-5H-E
- LTH-4H-M





UNITS PLAN

IBIZA





LTH-4H-M

4 BEDROOM TOWNHOUSE



GROUND FLOOR

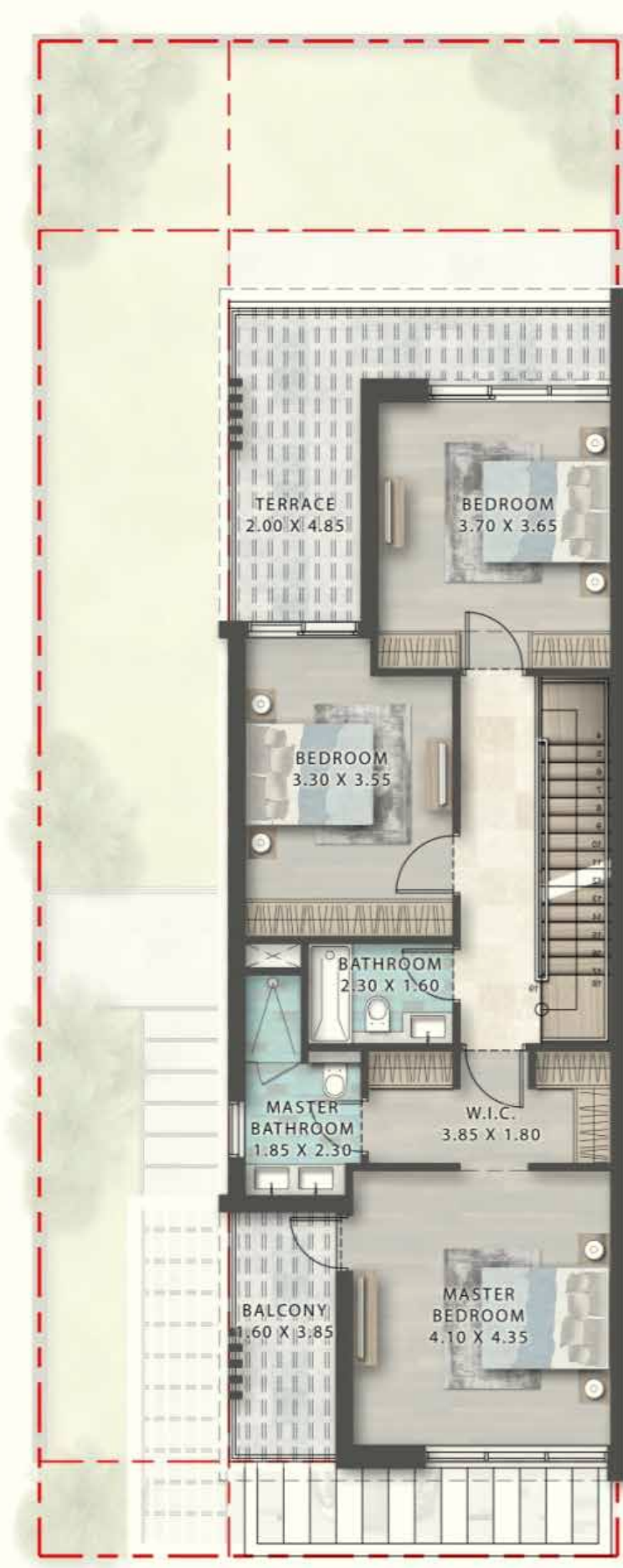


FIRST FLOOR

LTH-5H-E
**5 BEDROOM
TOWNHOUSE**



GROUND FLOOR



FIRST FLOOR



SECOND FLOOR

A stylized, light blue palm tree logo is centered in the background. It features a circular canopy with several rounded fronds and a simple trunk. The entire design is set against a solid teal background.

INTERIOR DESIGN

IBIZA

LIVING ROOM



LIVING ROOM/ DINING



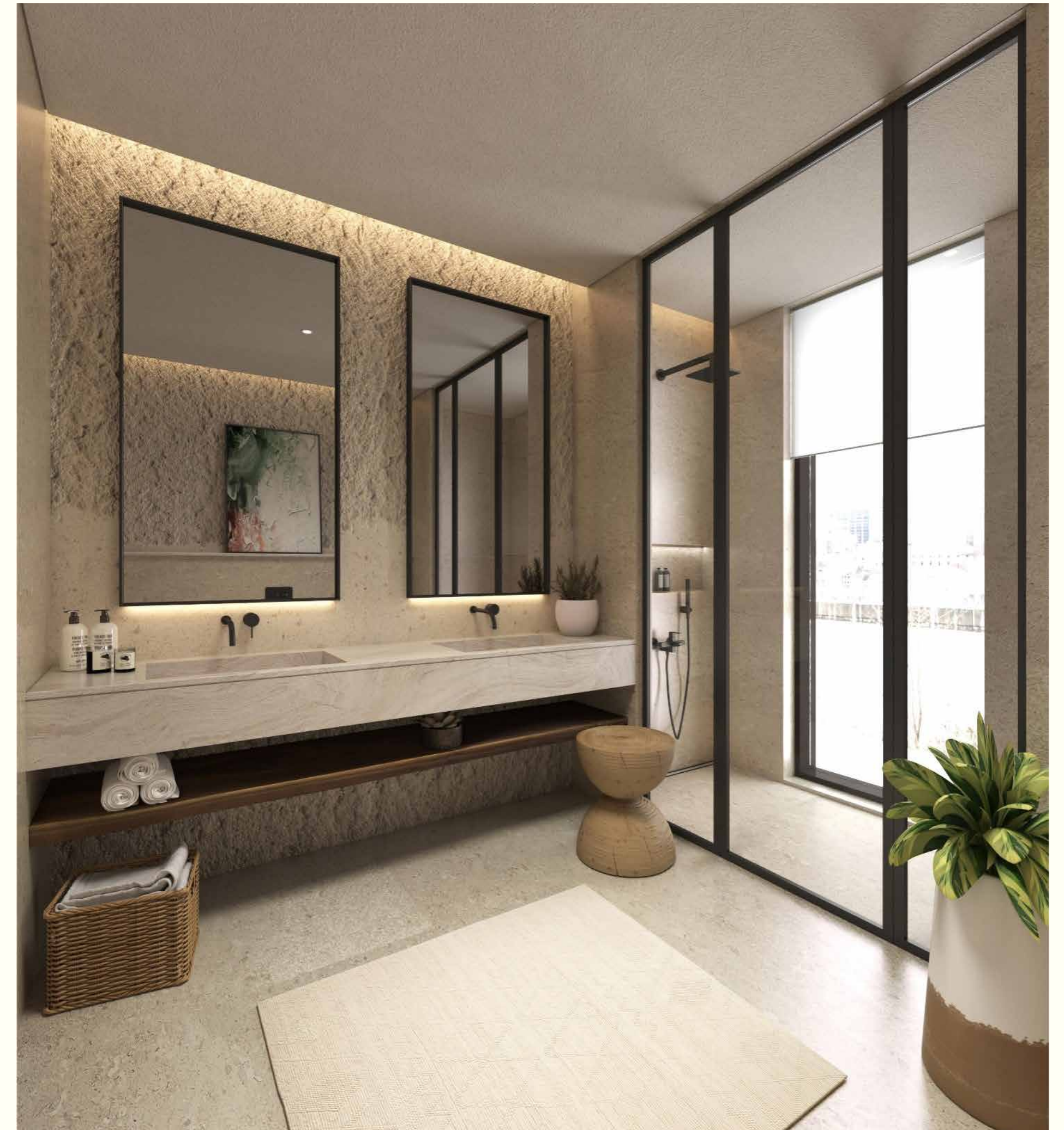
MASTER BEDROOM



MASTER BEDROOM



MASTER BATHROOM





EXTRA BEDROOM



EXTRA BEDROOM



A large, stylized palm tree graphic in a light orange color, centered behind the text. The tree has a long, slender trunk and a large, fan-like frond at the top. The background is a solid dark orange color.

PRICES & PAYMENT PLAN

IBIZA



PRICES & PAYMENT PLAN

TOWNHOUSE

LTH-4F-M
4 BEDROOM

2.1 Million

LTH-5F-E
5 BEDROOM

2.8 Million

IBIZA		
Description	Milestone Event	(%) Value
DEPOSIT	Immediate	20
1st INSTALLMENT	Within 3 Months of Sale Date	5
2nd INSTALLMENT	Within 6 Months of Sale Date	5
3rd INSTALLMENT	Within 9 Months of Sale Date	5
4th INSTALLMENT	Within 12 Months of Sale Date	5
5th INSTALLMENT	Within 15 Months of Sale Date	5
6th INSTALLMENT	Within 18 Months of Sale Date	5
7th INSTALLMENT	Within 21 Months of Sale Date	5
8th INSTALLMENT	Within 24 Months of Sale Date	5
9th INSTALLMENT	Within 27 Months of Sale Date	5
10th INSTALLMENT	Within 30 Months of Sale Date	5
11th INSTALLMENT	Within 33 Months of Sale Date	5
12th INSTALLMENT	On 70% Completion	2
13th INSTALLMENT	On 80% Completion	2
14th INSTALLMENT	On 90% Completion	1
15th INSTALLMENT	On Completion	20

4% DLD will be paid in addition to the initial deposit

THANK YOU