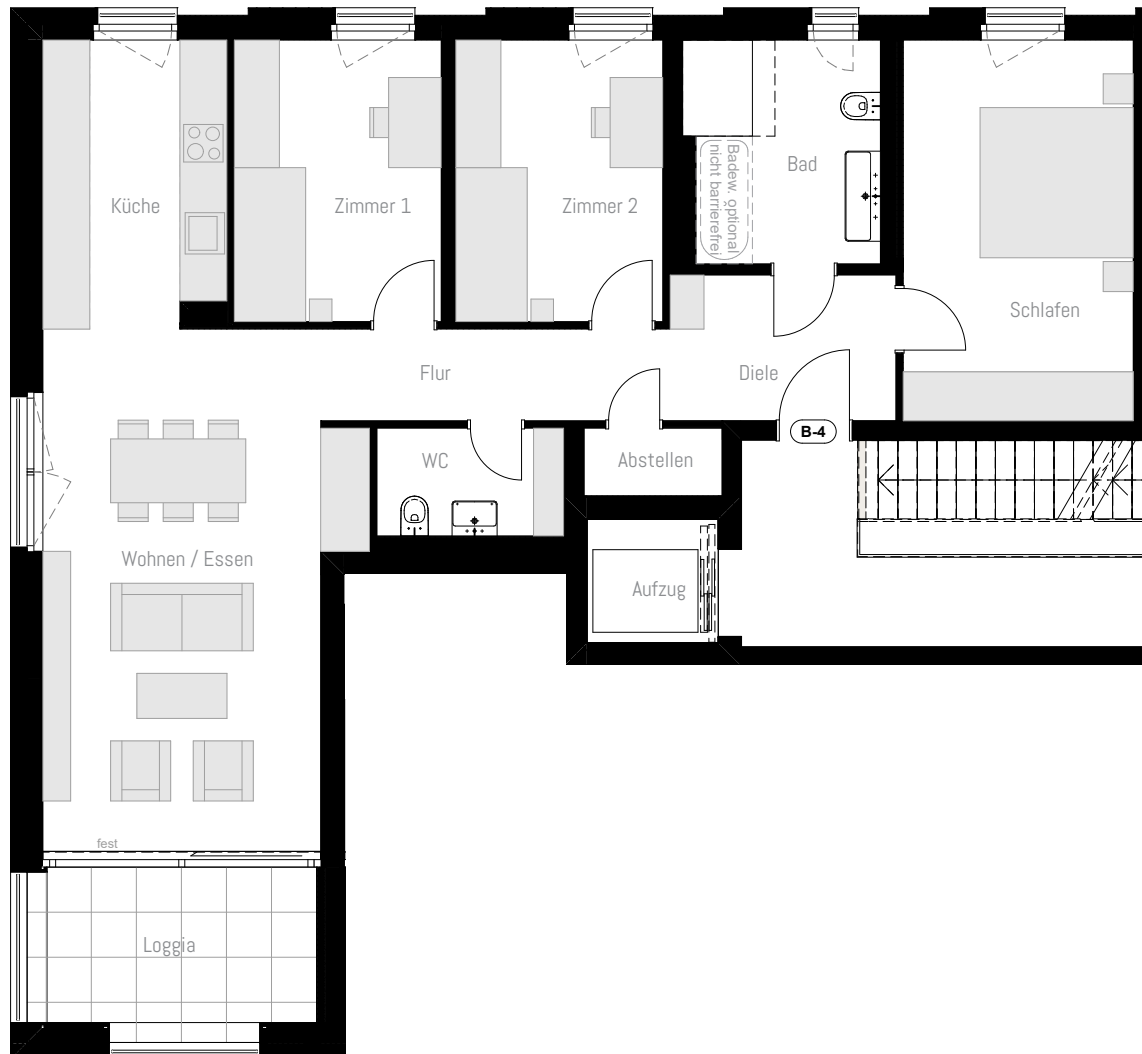
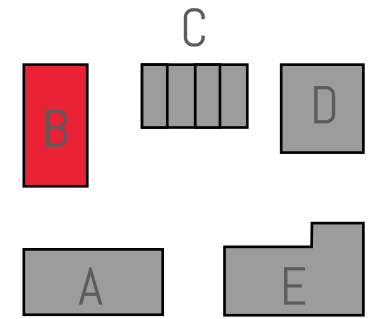
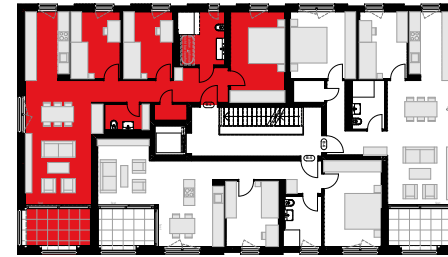


# 1. OBERGESCHOSS - HAUS B

## WOHNUNG B4



TYP: 4-ZIMMER

|                   |                             |
|-------------------|-----------------------------|
| Wohnen / Essen    | 26,80 m <sup>2</sup>        |
| Küche             | 9,20 m <sup>2</sup>         |
| Schlafen          | 15,52 m <sup>2</sup>        |
| Zimmer 1          | 10,33 m <sup>2</sup>        |
| Zimmer 2          | 10,33 m <sup>2</sup>        |
| Bad               | 7,54 m <sup>2</sup>         |
| WC                | 3,56 m <sup>2</sup>         |
| Flur              | 5,68 m <sup>2</sup>         |
| Diele             | 5,83 m <sup>2</sup>         |
| Abstellen         | 1,65 m <sup>2</sup>         |
| Loggia (50%)      | 4,25 m <sup>2</sup>         |
| <b>WOHNFLÄCHE</b> | <b>100,69 m<sup>2</sup></b> |

VERKAUFSPREIS: 665.000 EURO