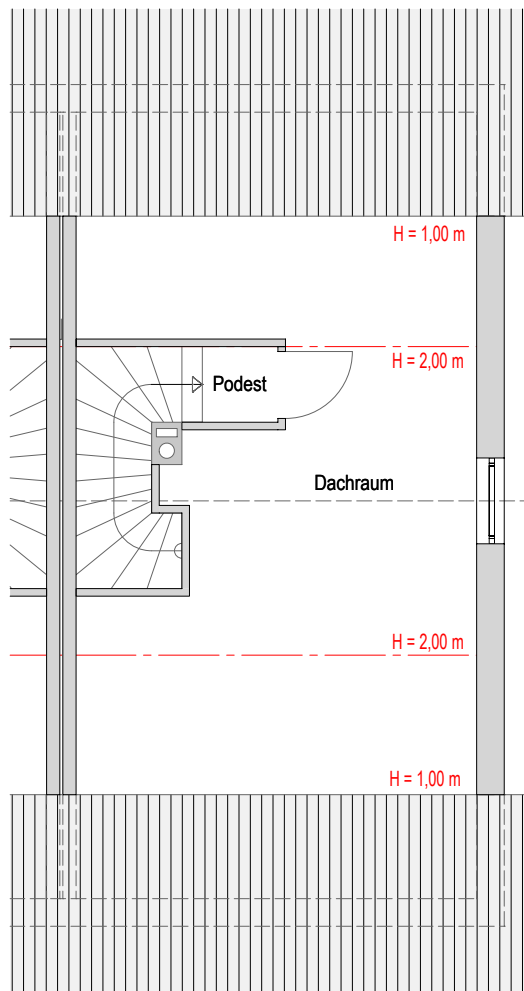
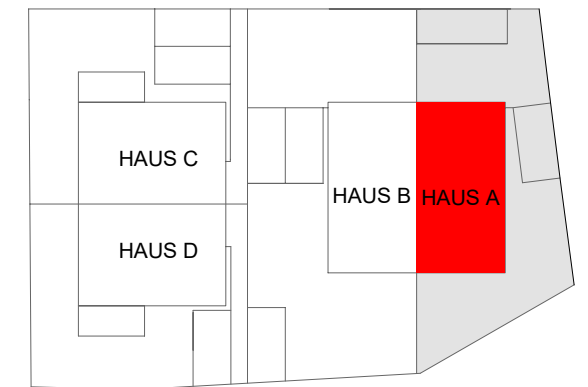
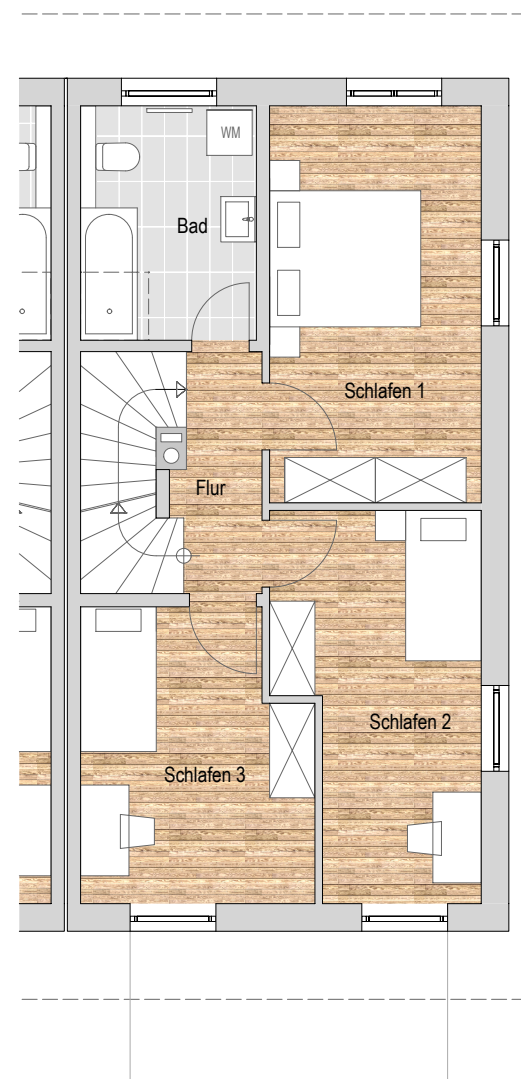


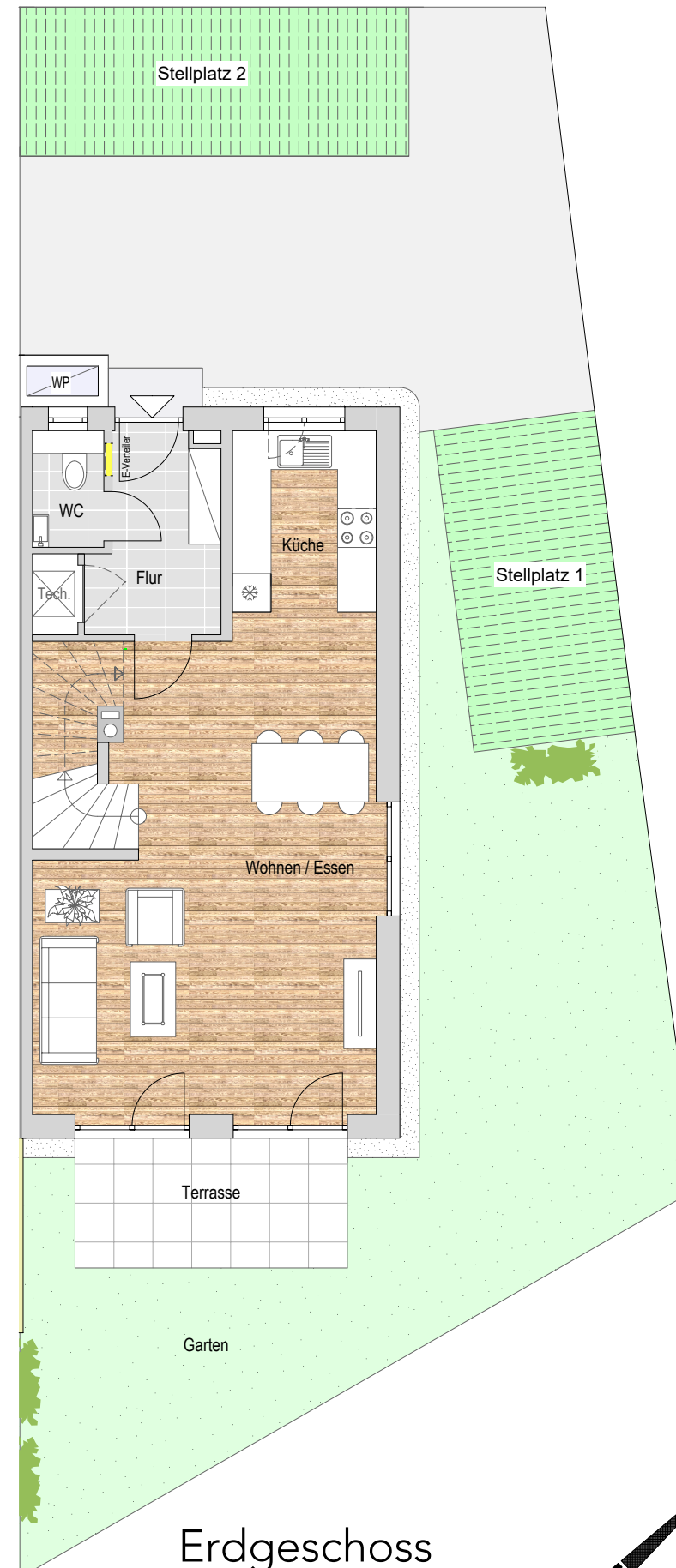
# DOPPELHAUSHÄLFTE AN DER SAALACHAU Haus A



Dachgeschoss



Obergeschoss



Erdgeschoss

Wohnen Essen	35,87 m <sup>2</sup>
Küche	7,21 m <sup>2</sup>
Flur	5,69 m <sup>2</sup>
WC	1,98 m <sup>2</sup>
Flur	3,38 m <sup>2</sup>
Bad	7,21 m <sup>2</sup>
Schlafen 1	14,70 m <sup>2</sup>
Schlafen 2	12,64 m <sup>2</sup>
Schlafen 3	11,27 m <sup>2</sup>
Dachraum	24,17 m <sup>2</sup>
Podest	1,00 m <sup>2</sup>
Terrasse 1/2	4,20 m <sup>2</sup>
<b>Summe</b>	<b>129,32 m<sup>2</sup></b>

Garten ca. 55,70 m<sup>2</sup>  
Grundstück ca. 199,70 m<sup>2</sup>

